

RANCHO LAS JUNTAS
1- 68P.M 1 & 2 7-18-78

P B
380

P B
161

PROJECT SITE

CDRZ25-03279 "A"

23

02
3.27AC.

14

05
9.00Ac.

17

06
6.356Ac.

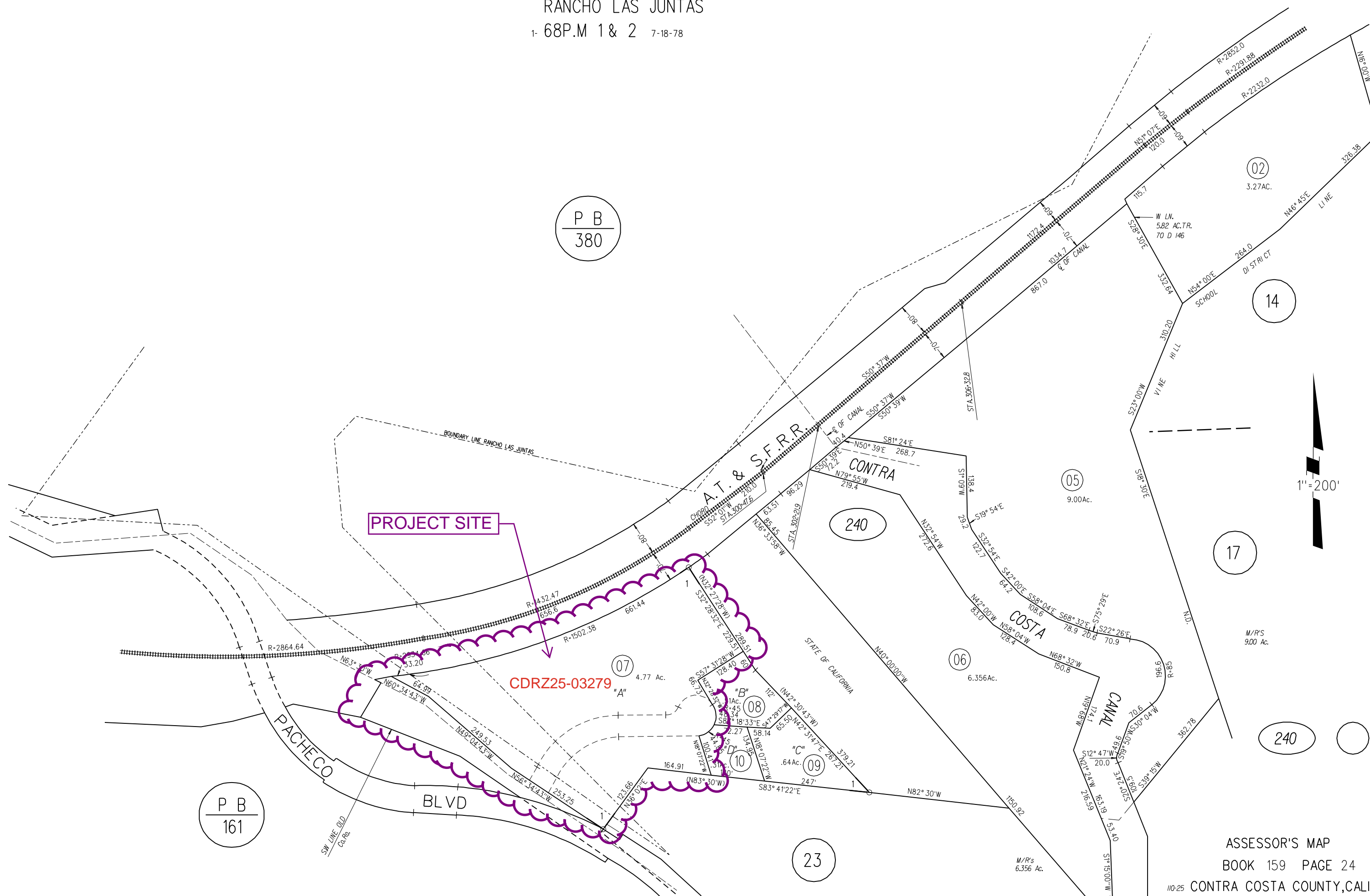
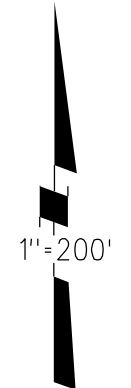
07
4.77 Ac.

08
Ac.

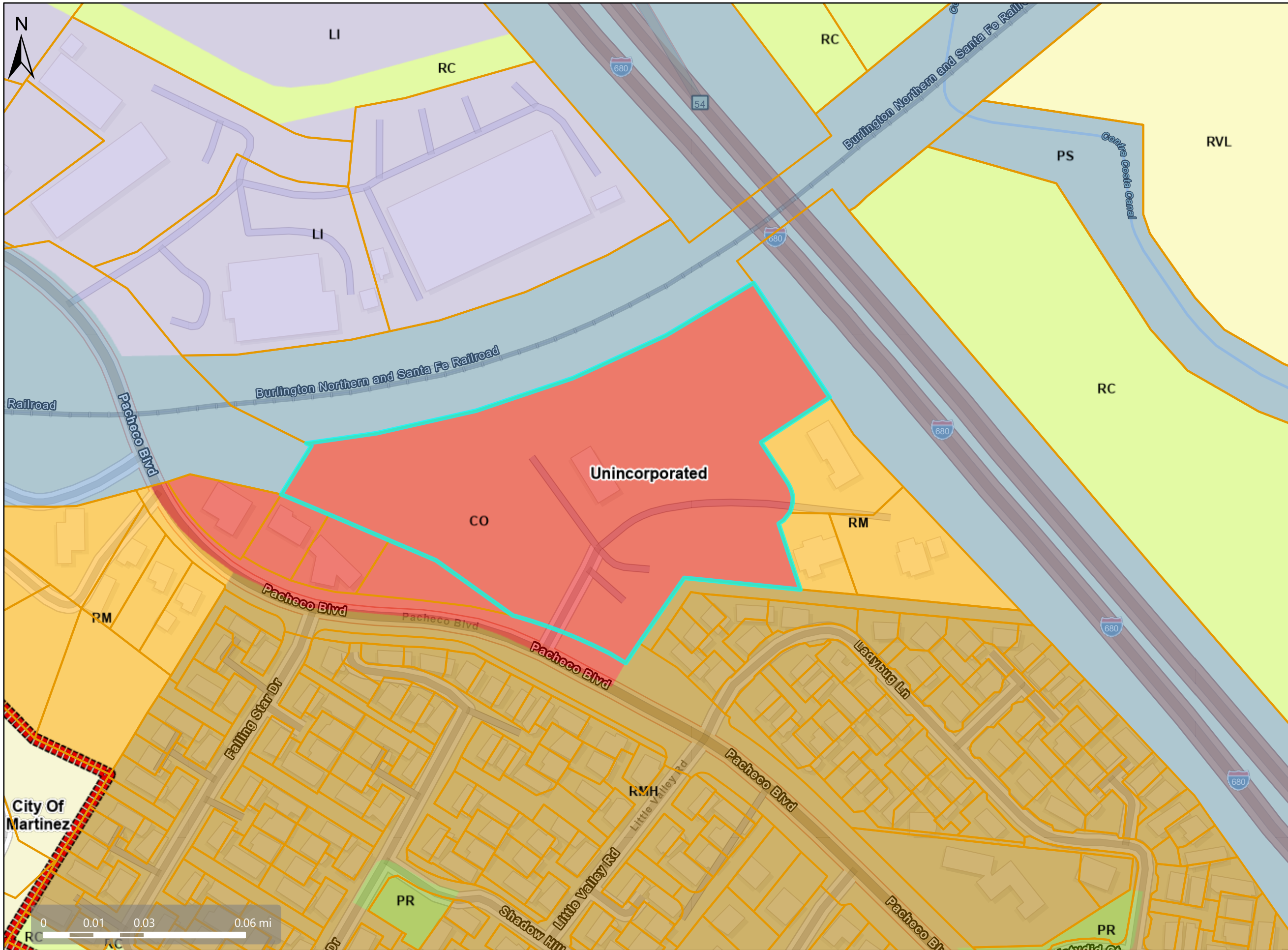
10
Ac.

09
.64Ac.

240



General Plan: CO, Commercial and Office



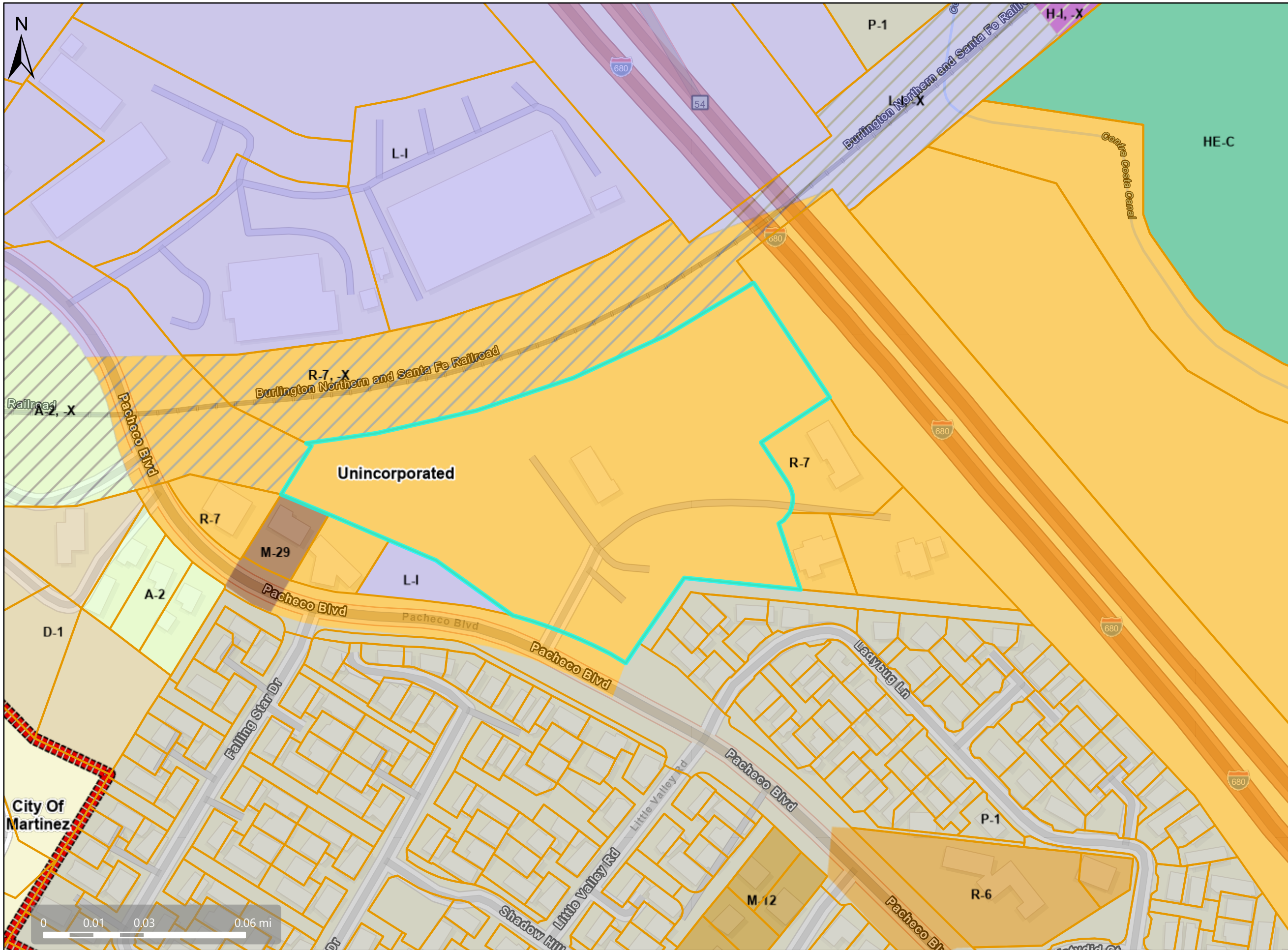
Map Legend

- Assessment Parcels
- General Plan**
- RVL (Residential Very-Low Density) (≤ 1 du/na)
- RM (Residential Medium Density) (7-17 du/na)
- RMH (Residential Medium-High Density) (17-30 du/na)
- CO (Commercial and Office) (C: 1.0 FAR O: 2.75 FAR)
- LI (Light Industry) (1.5 FAR)
- PS (Public and Semi-Public)
- PR (Park and Recreation)
- RC (Resource Conservation)
- Unincorporated
- City Limits



This map is a user generated, static output from an internet mapping application and is intended for reference use only. Data layers that appear on this map may or may not be accurate, current, or otherwise reliable. THIS MAP IS NOT TO BE USED FOR NAVIGATION. CCMAP is maintained by Contra Costa County Department of Information Technology, County GIS. Data layers contained within the CCMAP application are provided by various Contra Costa County Departments. Please direct all data inquiries to the appropriate department. Spatial Reference PCS: WGS 1984 Web Mercator Auxiliary Sphere Datum: WGS 1984

Zoning: R-7



Map Legend

- Assessment Parcels
- Zoning**
- ZONE_OVER**
- R-6 (Single Family Residential)
- R-7 (Single Family Residential)
- R-7 -X (Railroad Corridor Combining District)
- D-1 (Two Family Residential)
- M-12 (Multiple Family Residential)
- M-29 (Multiple Family Residential)
- A-2 (General Agriculture)
- A-2 -X (Railroad Corridor Combining District)
- L-I (Light Industrial)
- L-I -X (Railroad Corridor Combining District)
- H-I -X (Railroad Corridor Combining District)
- P-1 (Planned Unit)
- HE-C (Housing Element Consistency)
- Unincorporated
- City Limits

This map is a user generated, static output from an internet mapping application and is intended for reference use only. Data layers that appear on this map may or may not be accurate, current, or otherwise reliable. THIS MAP IS NOT TO BE USED FOR NAVIGATION. CCMAP is maintained by Contra Costa County Department of Information Technology, County GIS. Data layers contained within the CCMAP application are provided by various Contra Costa County Departments. Please direct all data inquiries to the appropriate department.

Spatial Reference
 PCS: WGS 1984 Web Mercator Auxiliary Sphere
 Datum: WGS 1984

Aerial View, expanded



Map Legend

- Assessment Parcels
- Unincorporated
- Address Points
- Aerials 2019
- RGB
 - Red: Band_1
 - Green: Band_2
 - Blue: Band_3

This map is a user generated, static output from an internet mapping application and is intended for reference use only. Data layers that appear on this map may or may not be accurate, current, or otherwise reliable. THIS MAP IS NOT TO BE USED FOR NAVIGATION. CCMMap is maintained by Contra Costa County Department of Information Technology, County GIS. Data layers contained within the CCMMap application are provided by various Contra Costa County Departments. Please direct all data inquires to the appropriate department. Spatial Reference PCS: WGS 1984 Web Mercator Auxiliary Sphere Datum: WGS 1984

Aerial View



Map Legend

- Assessment Parcels
- Unincorporated
- City Limits

Aerials 2019
RGB

- Red: Band_1
- Green: Band_2
- Blue: Band_3

This map is a user generated, static output from an internet mapping application and is intended for reference use only. Data layers that appear on this map may or may not be accurate, current, or otherwise reliable. THIS MAP IS NOT TO BE USED FOR NAVIGATION. CCMap is maintained by Contra Costa County Department of Information Technology, County GIS. Data layers contained within the CCMap application are provided by various Contra Costa County Departments. Please direct all data inquires to the appropriate department. Spatial Reference PCS: WGS 1984 Web Mercator Auxiliary Sphere Datum: WGS 1984