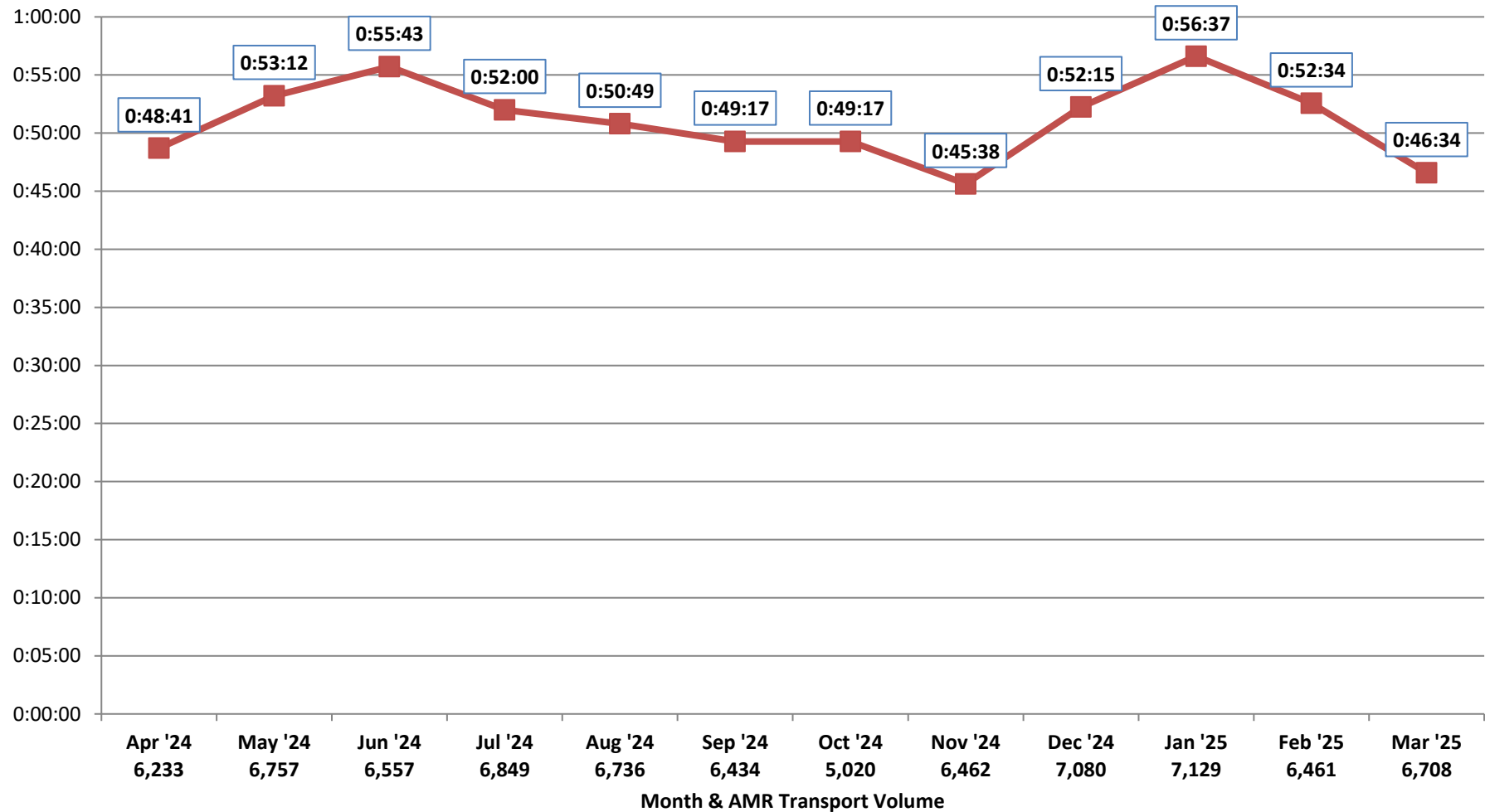




## Patient Transfer of Care Times by Facility 90th PERCENTILE OF ALL FACILITIES

April 2024 - March 2025  
78,426 Transports (6,536 per Month)  
Source: AMR MEDS (ePCR Database)



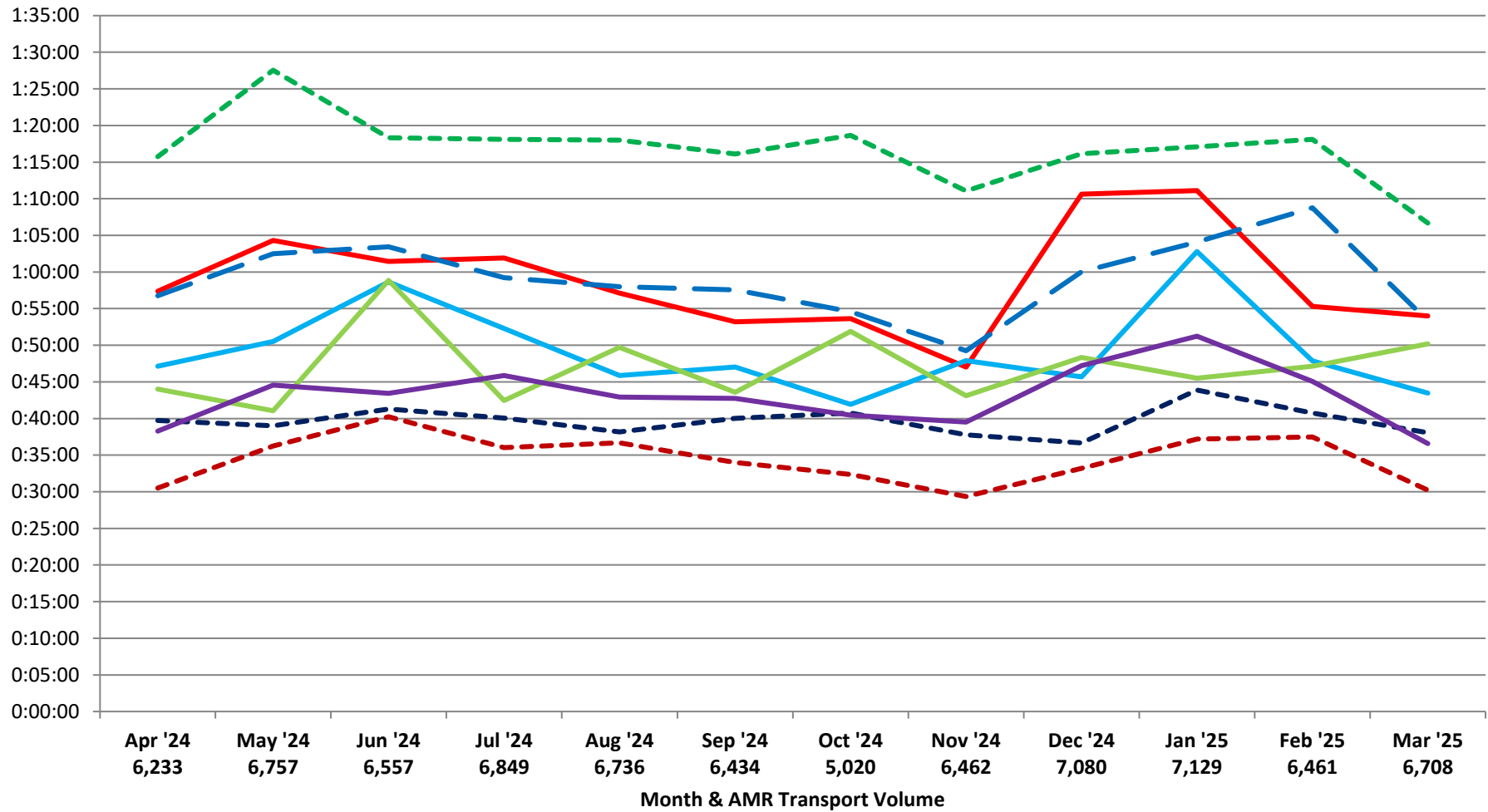


# Patient Transfer of Care Times by Facility (90th Percentile)

April 2024 - March 2025

Source: AMR MEDS (ePCR Database)

- - - John Muir - Concord
- John Muir - Walnut Creek
- Kaiser Hospital - Antioch
- • Kaiser Hospital - Richmond
- - - Kaiser Hospital - Walnut Creek
- Contra Costa Regional Medical Center
- Sutter Delta Medical Center
- - - PES - Contra Costa Regional Medical Center





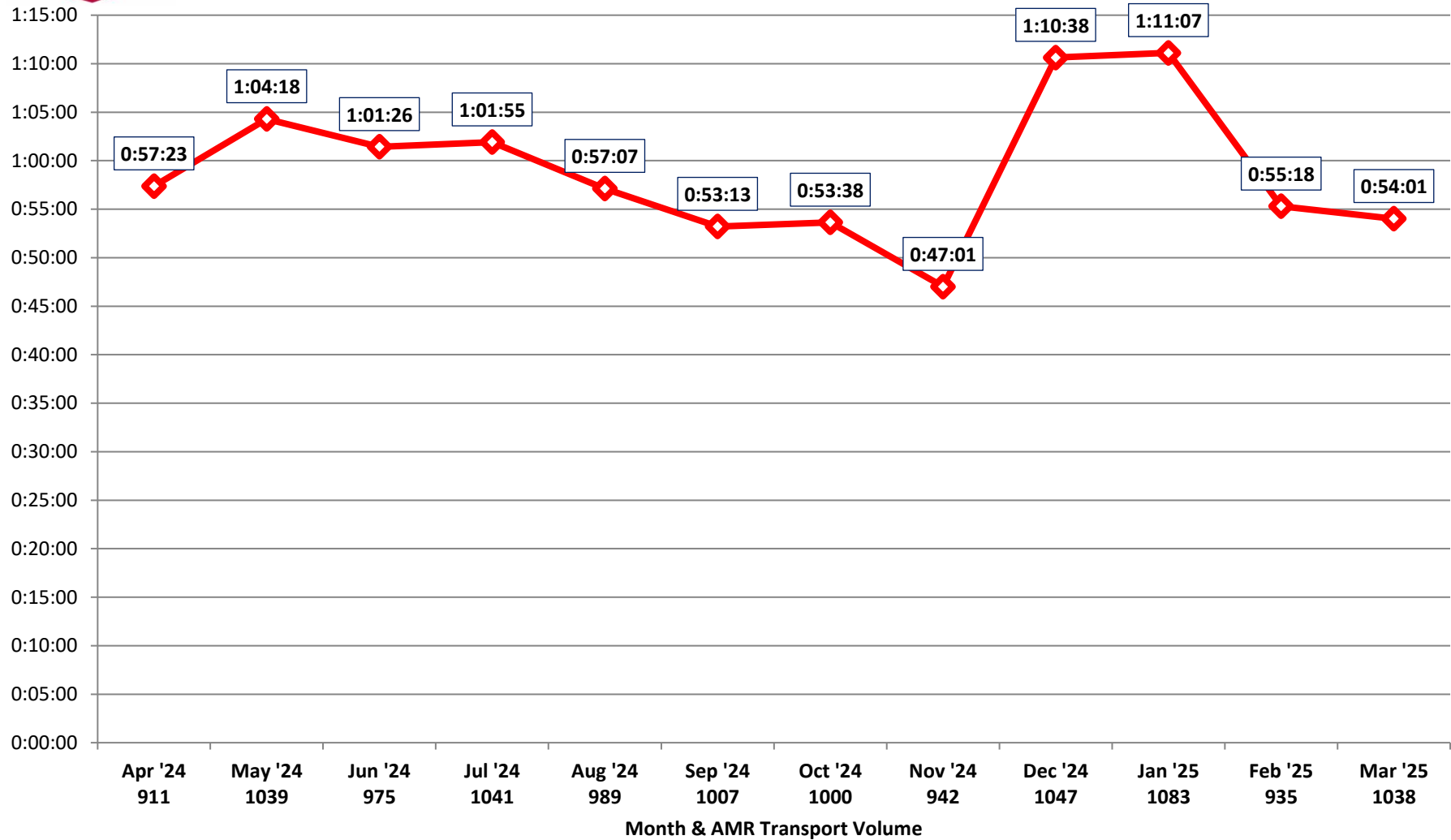
## Patient Transfer of Care Times by Facility (90th Percentile)

### John Muir - Walnut Creek

April 2024 - March 2025

12,007 Total Transports (1001 per Month)

Source: AMR MEDS (ePCR Database)





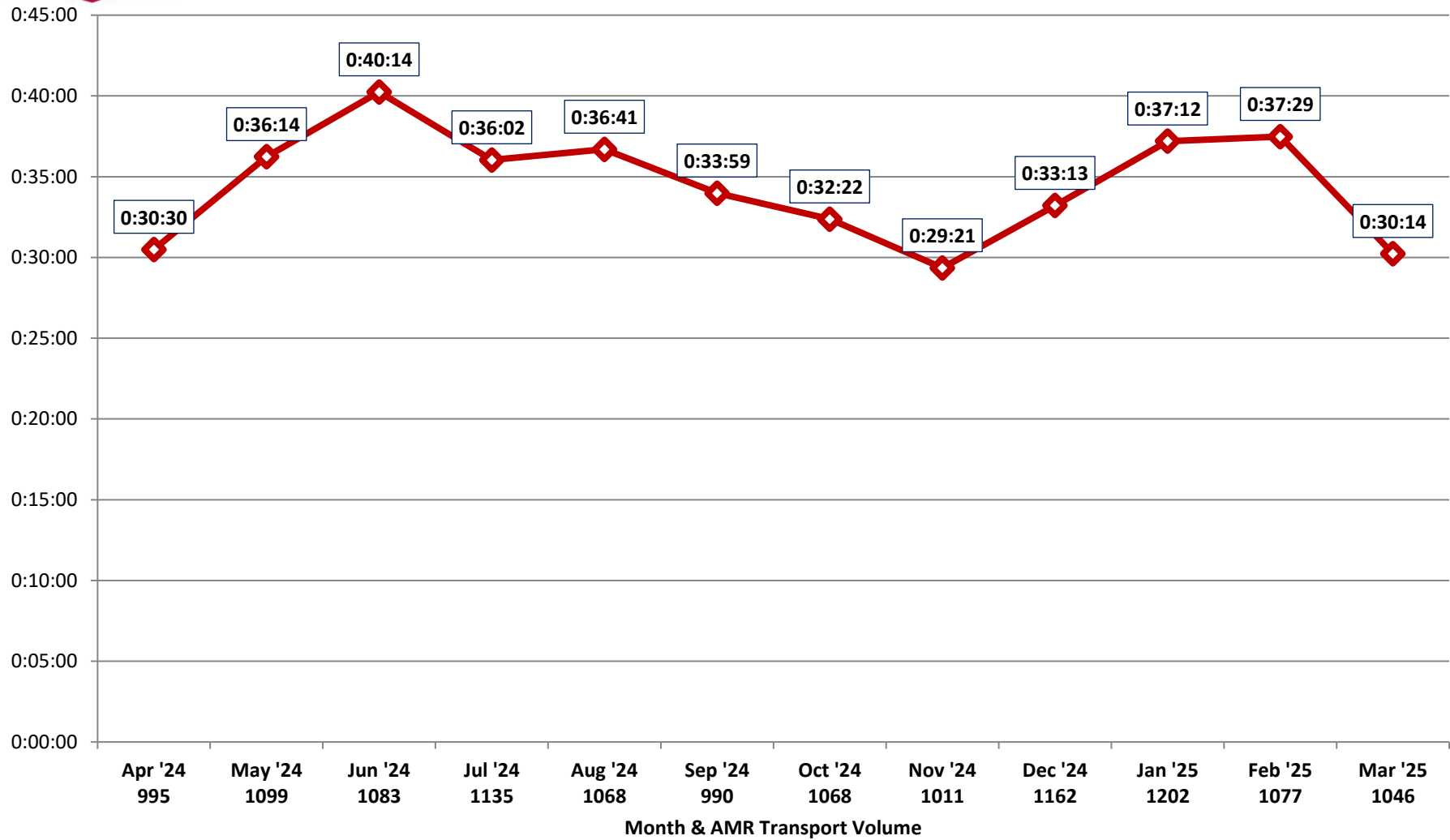
## Patient Transfer of Care Times by Facility (90th Percentile)

### John Muir - Concord

April 2024 - March 2025

12,936 Total Transports (1078 per Month)

Source: AMR MEDS (ePCR Database)





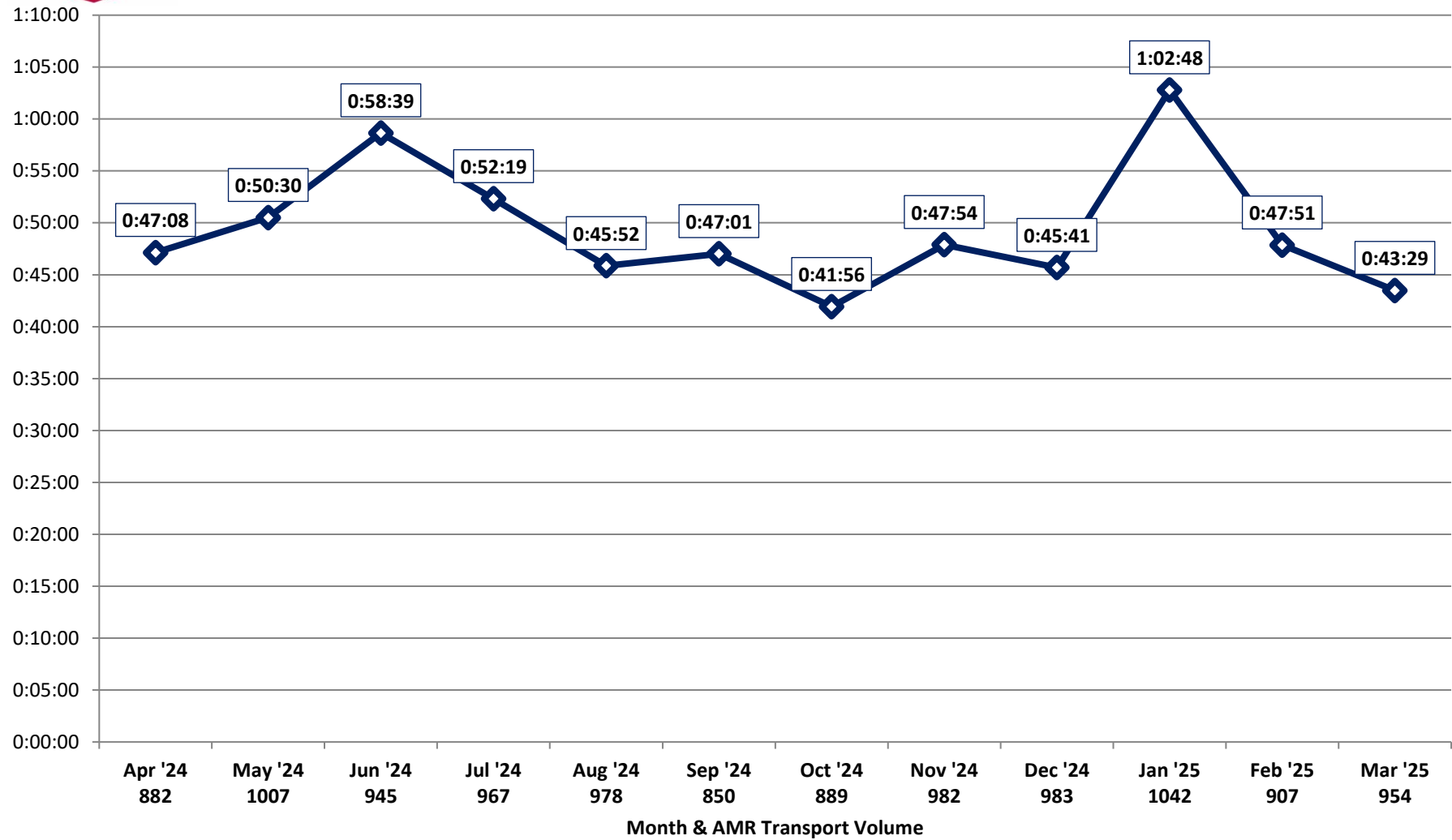
## Patient Transfer of Care Times by Facility (90th Percentile)

### Kaiser - Antioch

April 2024 - March 2025

11,386 Total Transports (949 per Month)

Source: AMR MEDS (ePCR Database)





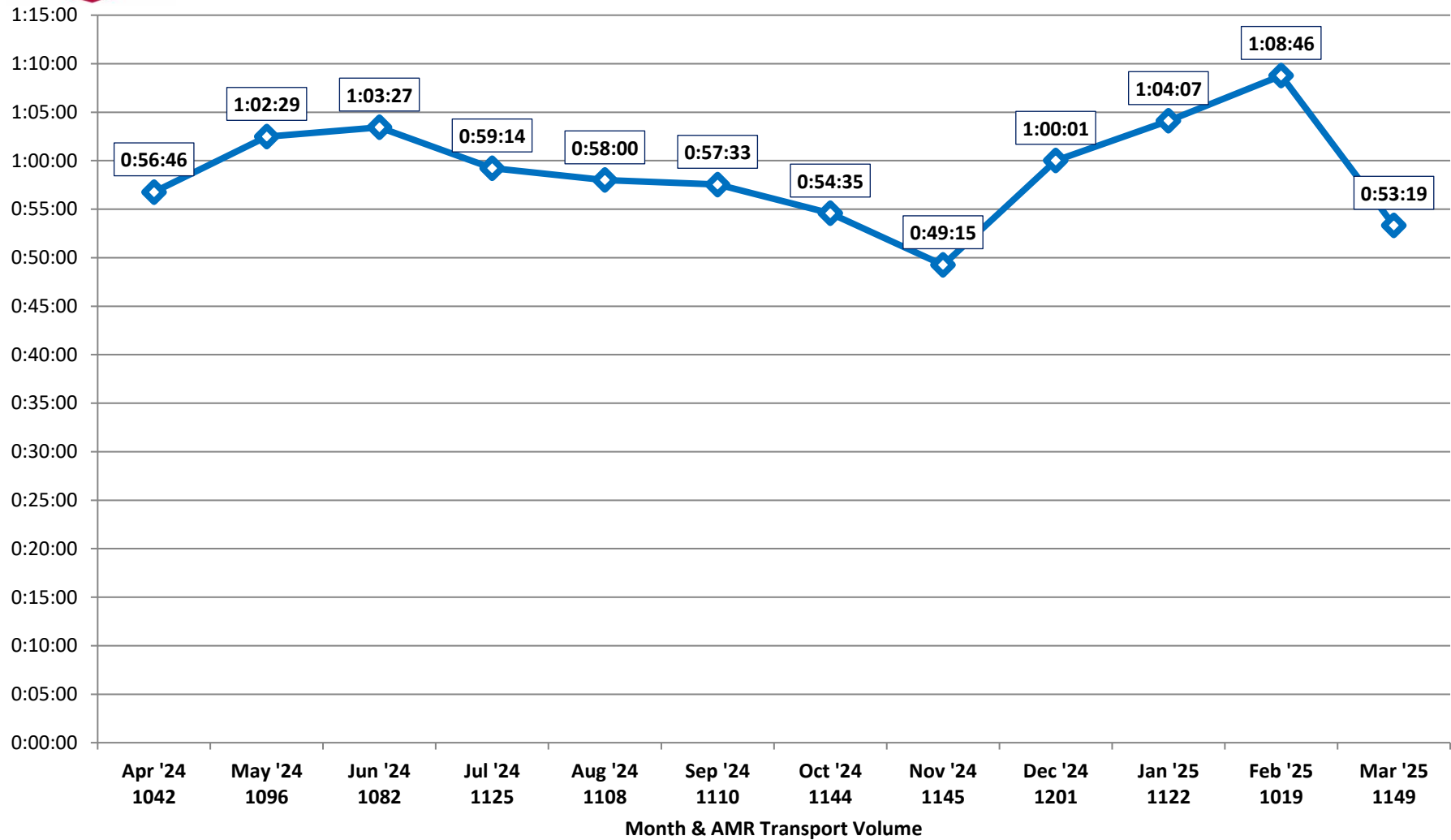
## Patient Transfer of Care Times by Facility (90th Percentile)

### Kaiser - Richmond

April 2024 - March 2025

13,343 Total Transports (1,112 per Month)

Source: AMR MEDS (ePCR Database)





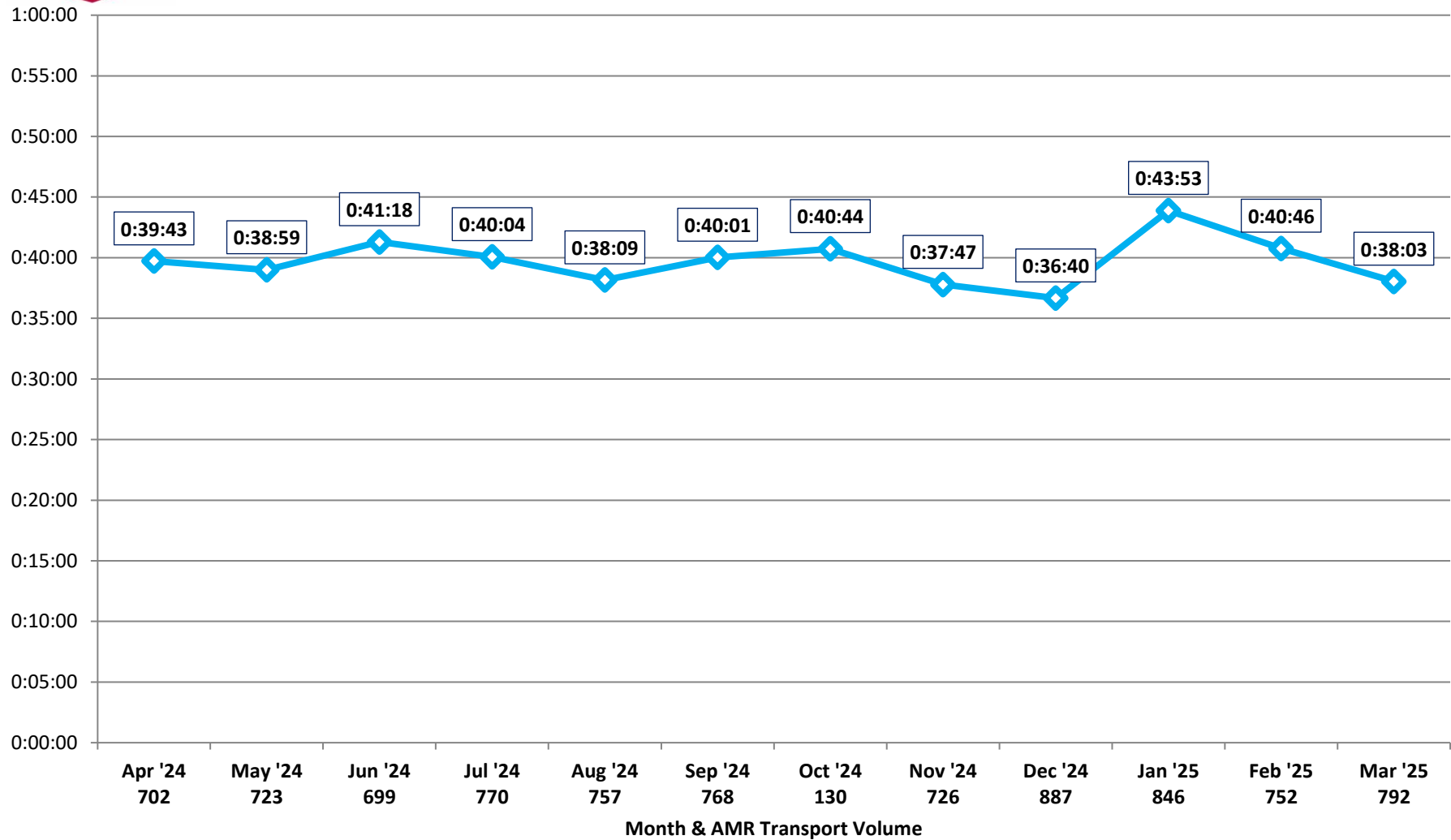
## Patient Transfer of Care Times by Facility (90th Percentile)

### Kaiser - Walnut Creek

April 2024 - March 2025

8,552 Total Transports (713 per Month)

Source: AMR MEDS (ePCR Database)





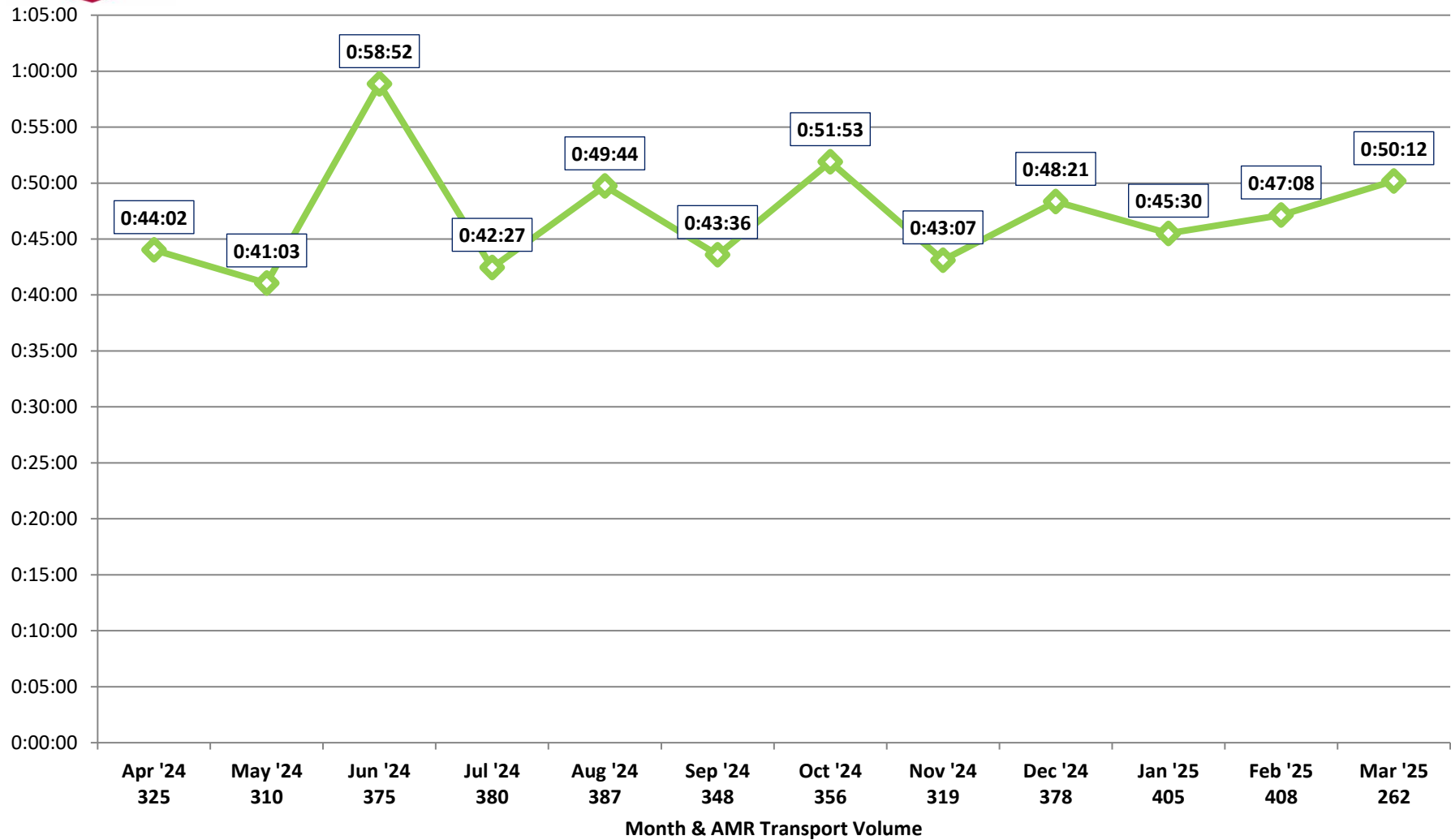
## Patient Transfer of Care Times by Facility (90th Percentile)

### Contra Costa Regional Medical Center

April 2024 - March 2025

4,253 Total Transports (354 per Month)

Source: AMR MEDS (ePCR Database)







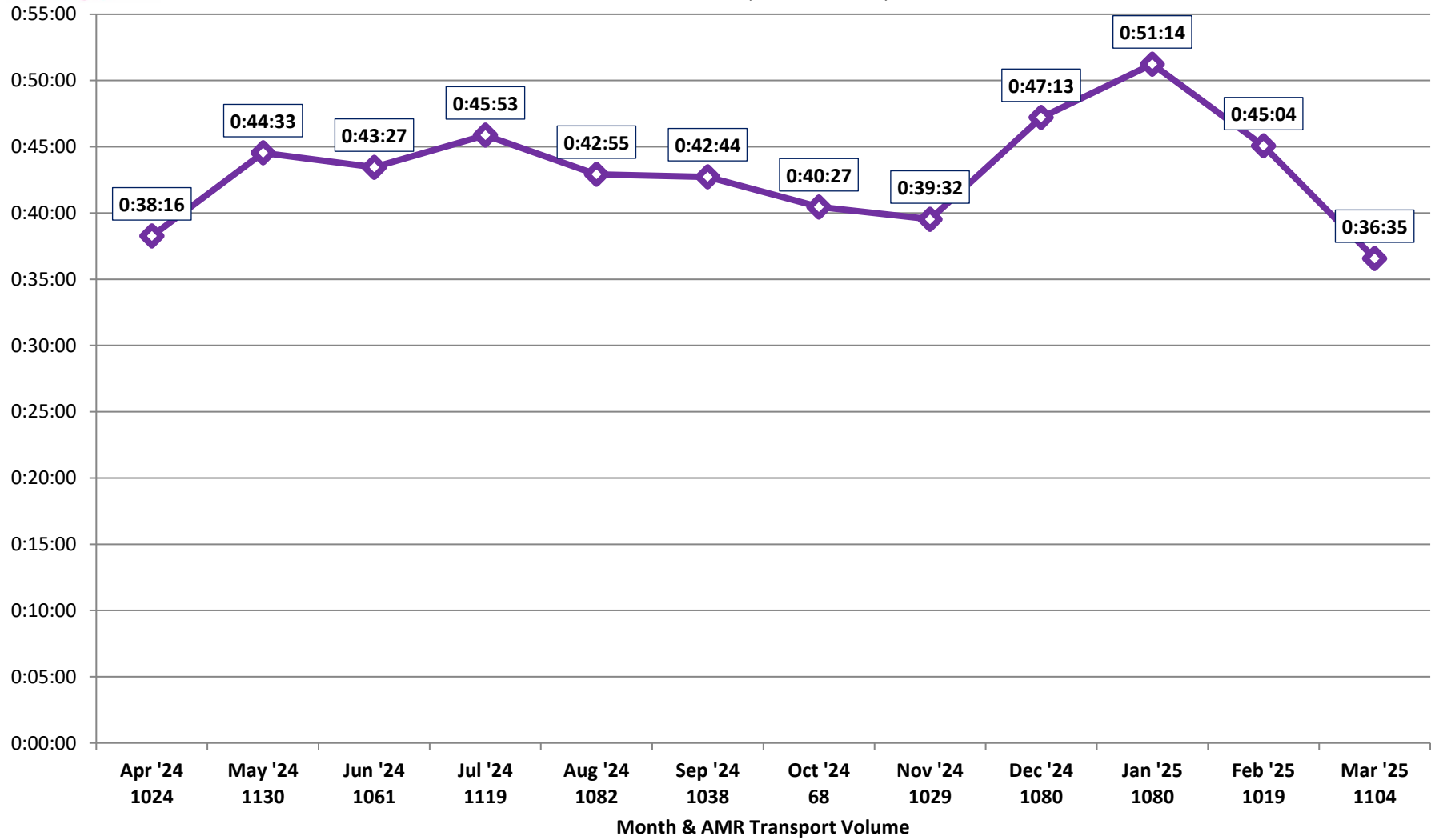
# Patient Transfer of Care Times by Facility (90th Percentile)

## Sutter Delta Medical Center

April 2024 - March 2025

11,834 Total Transports (986 per Month)

Source: AMR MEDS (ePCR Database)





## Patient Transfer of Care Times by Facility (90th Percentile)

### CCRMC - PES

April 2024 - March 2025

4,115 Total Transports (343 per Month)

Source: AMR MEDS (ePCR Database)

