

Engaging Homeless Populations During Hazardous Materials Incidents: Communication Strategies for Areas Around Refineries

Aimee Benedict, Hazardous Materials Intern

Areas surrounding refineries and factories may be impacted during an accidental release of hazardous materials, creating “impacted zones” where people cannot shelter in place.

- For example, at MRC Martinez, there are some people living near the “impacted zone” area, but more had been living there priorly. The outreach worker there noted that homeless people changed their possessions frequently and were subject to police and other types of raids, and are difficult to ascertain that they would keep devices that weren’t portable with them.
- Directly close to the site, there are no businesses to shelter in place in in case of a hazardous event.
- In case of hazardous event, outreach workers can “recommend” that people leave the area, but they can’t force them to do so.

Near Martinez Refining Company, Martinez



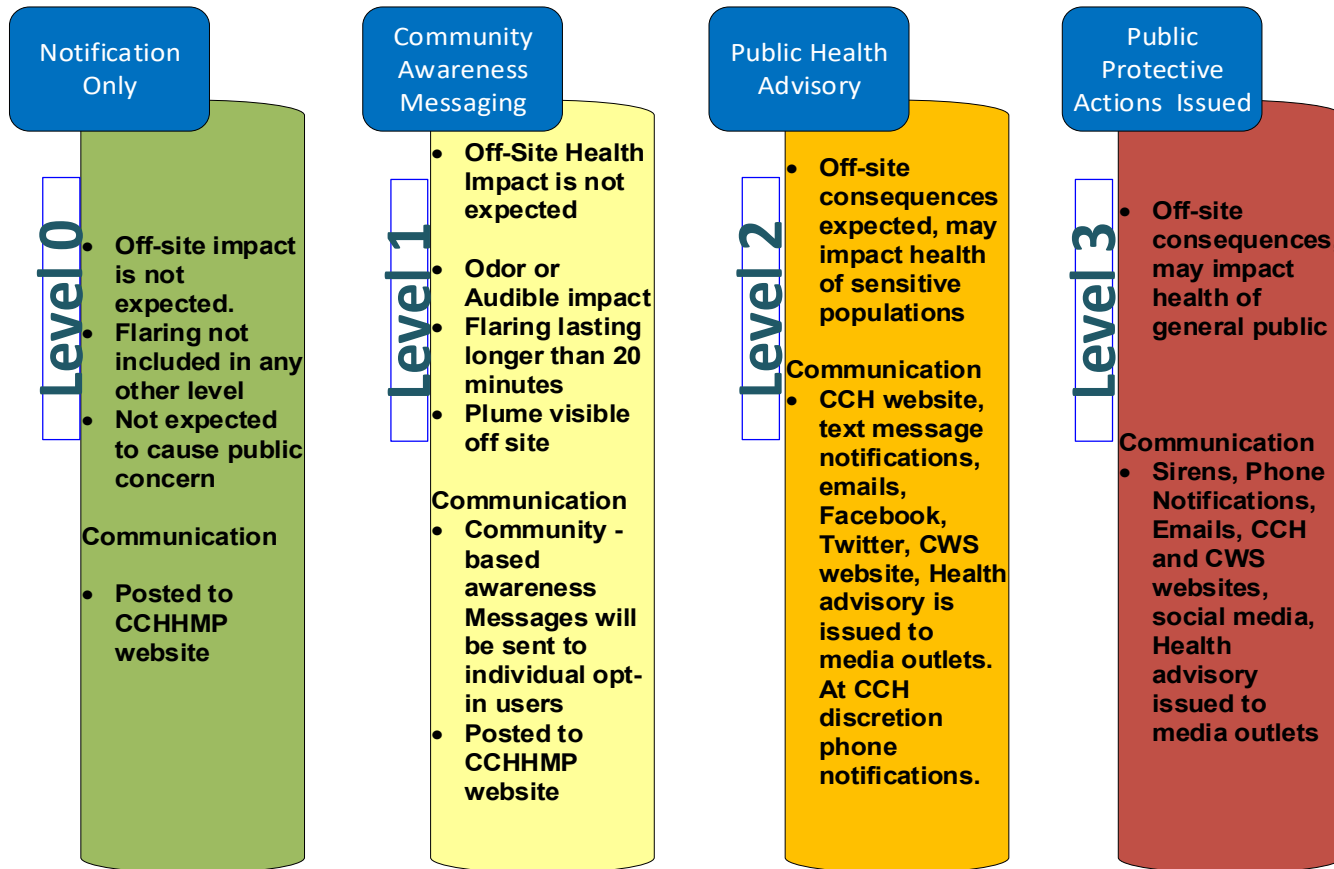
Receiving alerts about hazardous material events via text messaging is crucial.

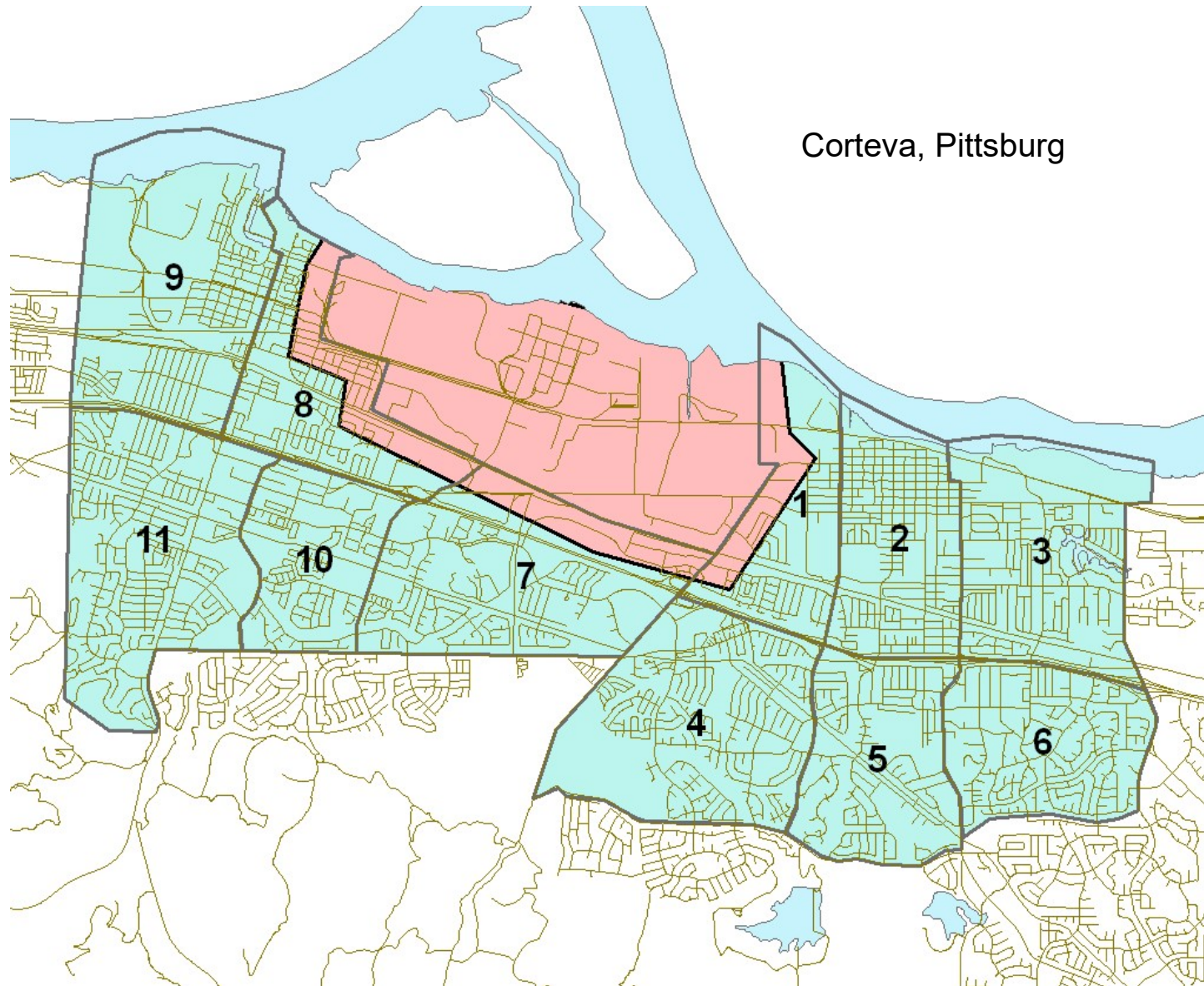
- It is important that alerts and warning system messages from the community warning systems are sent to everyone affected by the hazardous event to educate and provide information about what the messages mean. If there is an imminent threat to health and human life the two actions are to shelter in place or evacuate.
- Every cell phone that's capable of receiving a message in any direction receives a message through the Wireless Emergency Alert network.
- Hazardous Materials Incidents at facilities in Contra Costa are defined in the Hazardous Materials Notification Policy, which contains a definition of level 0, 1, 2, or level 3 incident with CWS.

Community Warning System- CWS- messages may be sent to cell phones through text messages or other tools, including the Wireless Emergency Alert- WEA- network.

- The public should sign up for messages to enable them to receive all the messages available in the system for public notification
- The six locations considered in this survey are the Tesoro Refinery, Concord, the Rhodia Chemical Plant, Martinez, which produces sulfuric acid, the Martinez Refining Company PBF, Martinez, Chevron Refinery, Richmond, Conoco Phillips, Rodeo, and Corteva, Pittsburg, which is a pesticide company.

Hazmat Warning System Levels





Corteva, Pittsburg

Cortevea, Pittsburg.

CORE PD Report Weekly (ver2) Location pins (Map) ♥ 📍

Contact Date

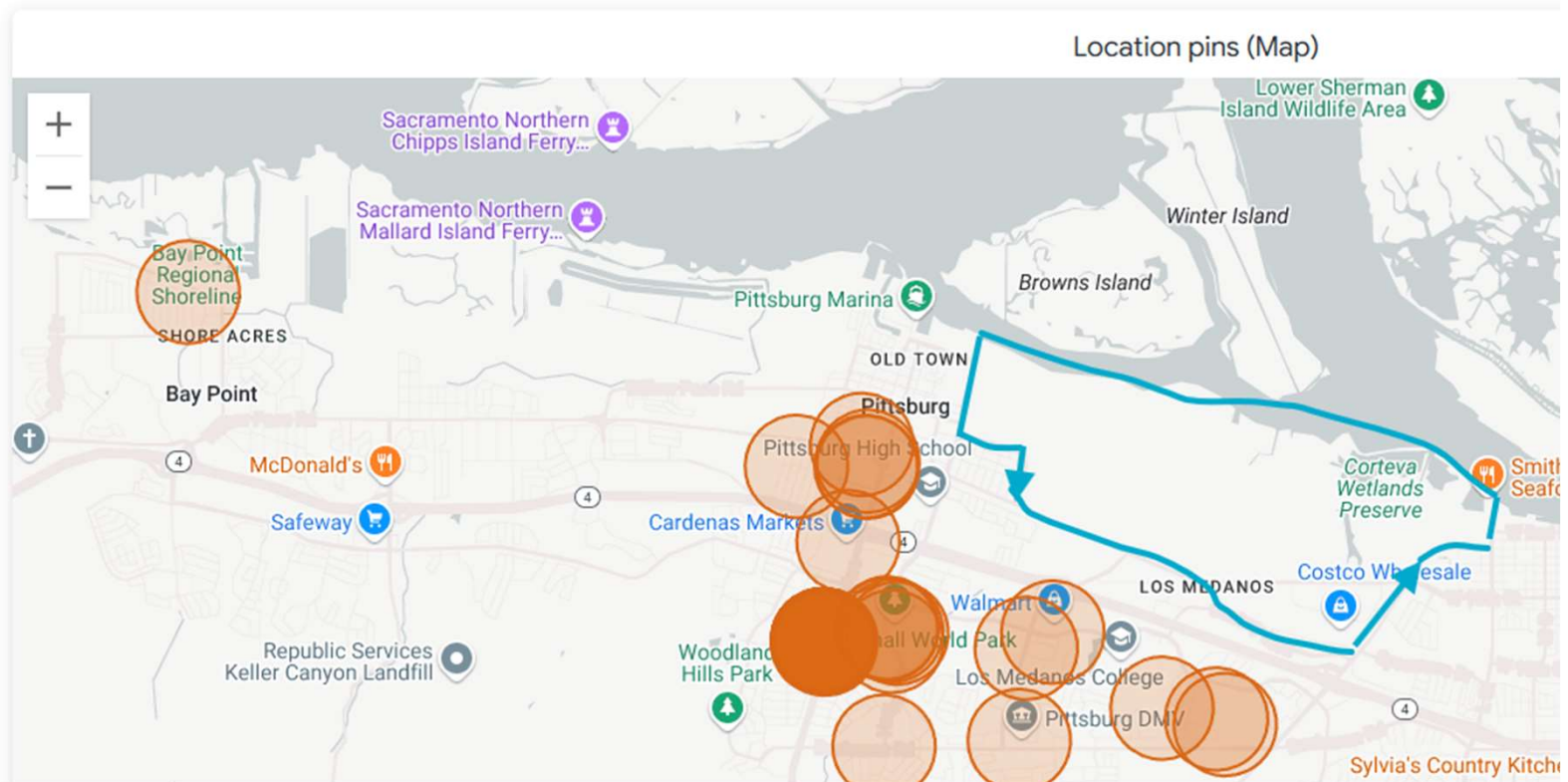
is from 2025/01/01 until 2025/04/22

CORE Team

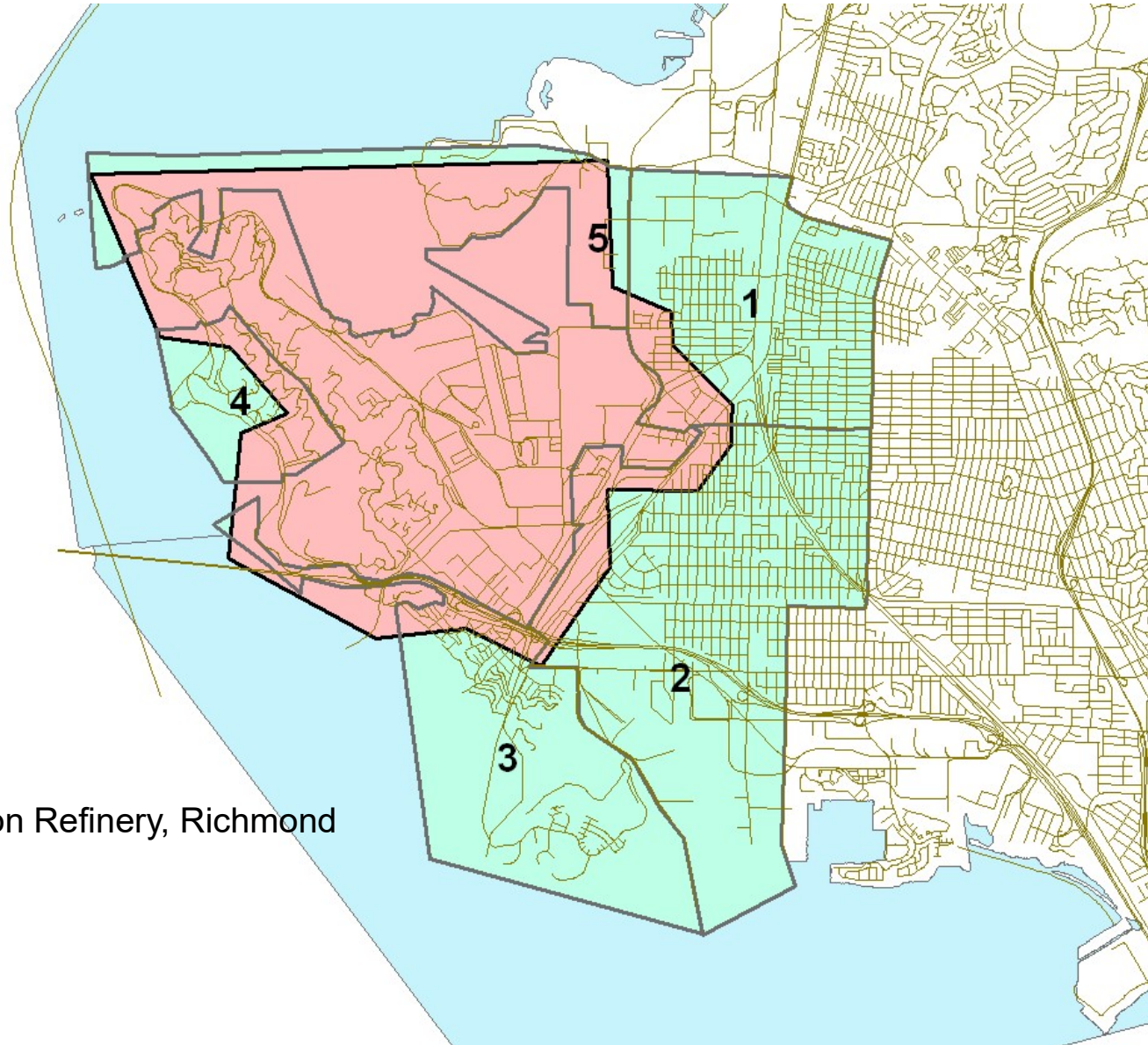
is any value

Contact City

is Pittsburg



Chevron Refinery, Richmond



Chevron Refinery, Richmond

Contact Date

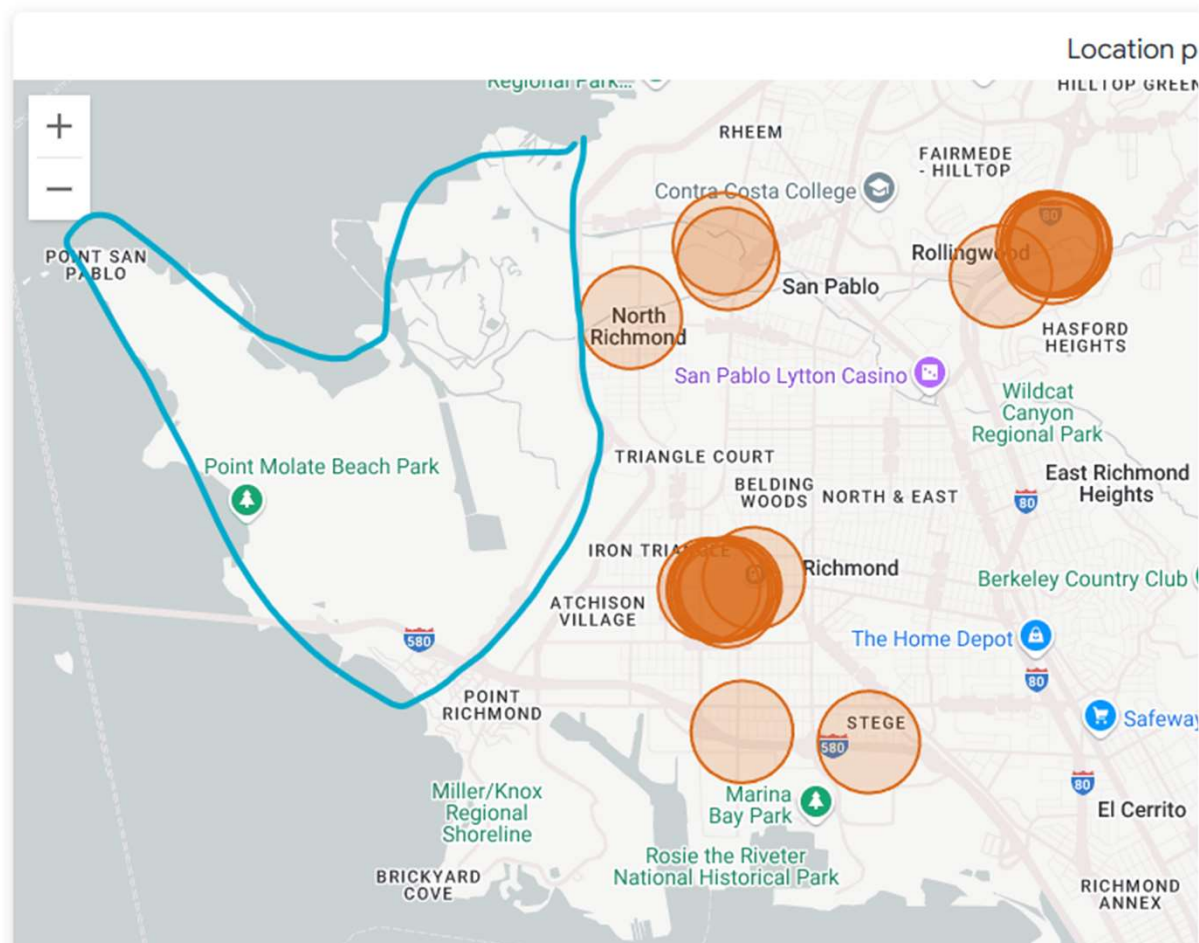
is from 2025/01/01 until 2025/04/22

CORE Team

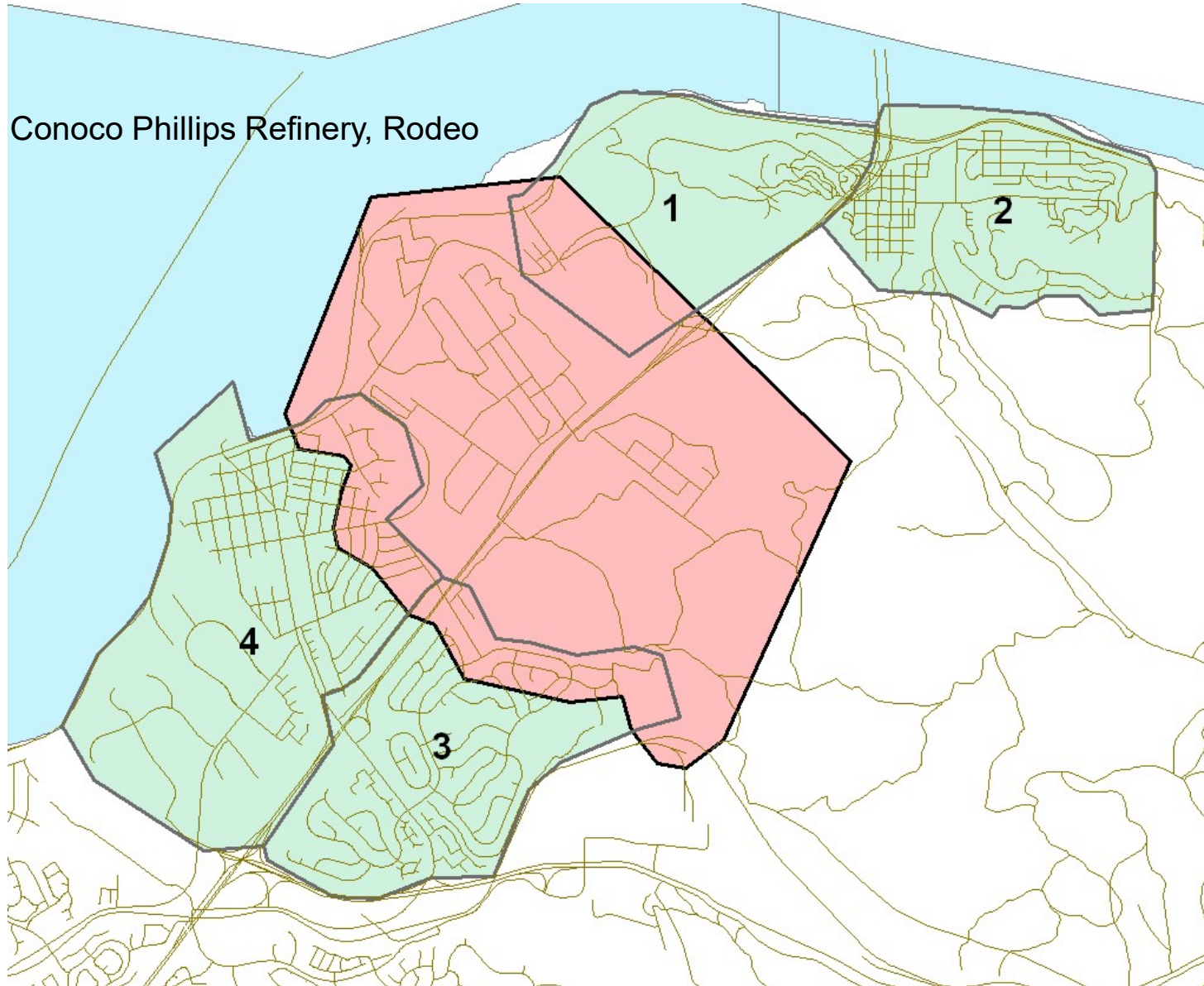
is any value

Contact City

is Richmond



Conoco Phillips Refinery, Rodeo



Conoco Refinery, Rodeo

Contact Date

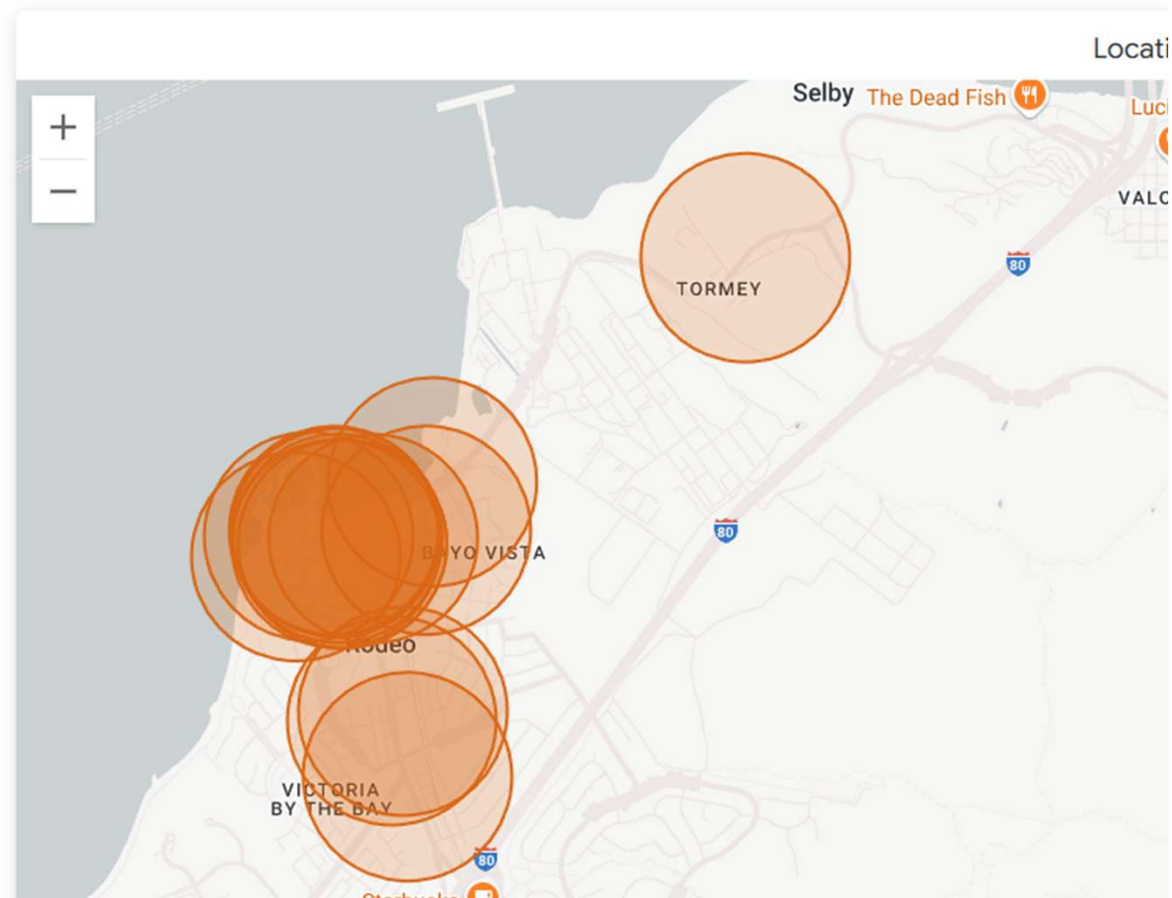
is from 2025/01/01 until 2025/04/22

CORE Team

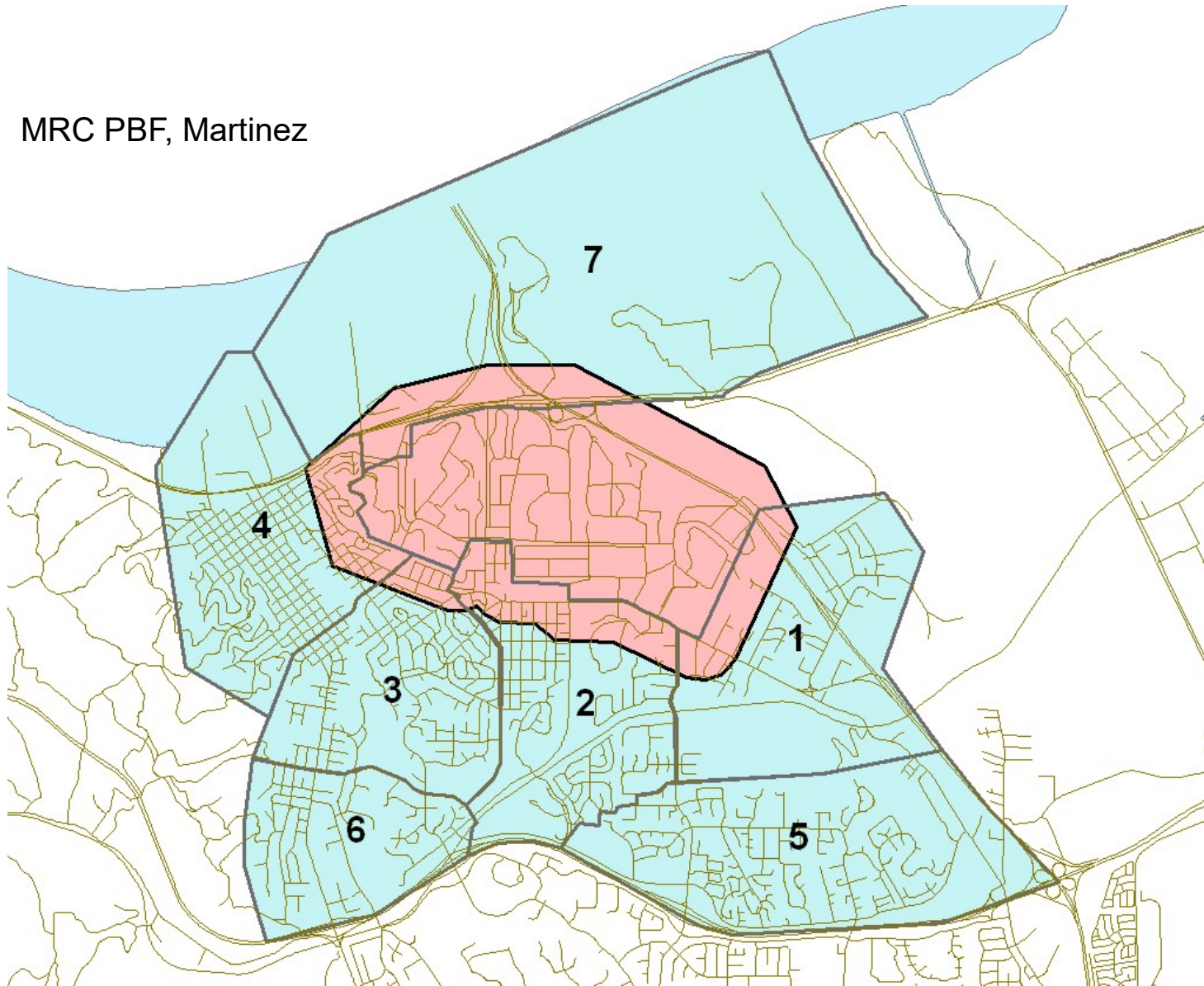
is any value

Contact City

is Rodeo



MRC PBF, Martinez



MRC, Martinez

Contact Date

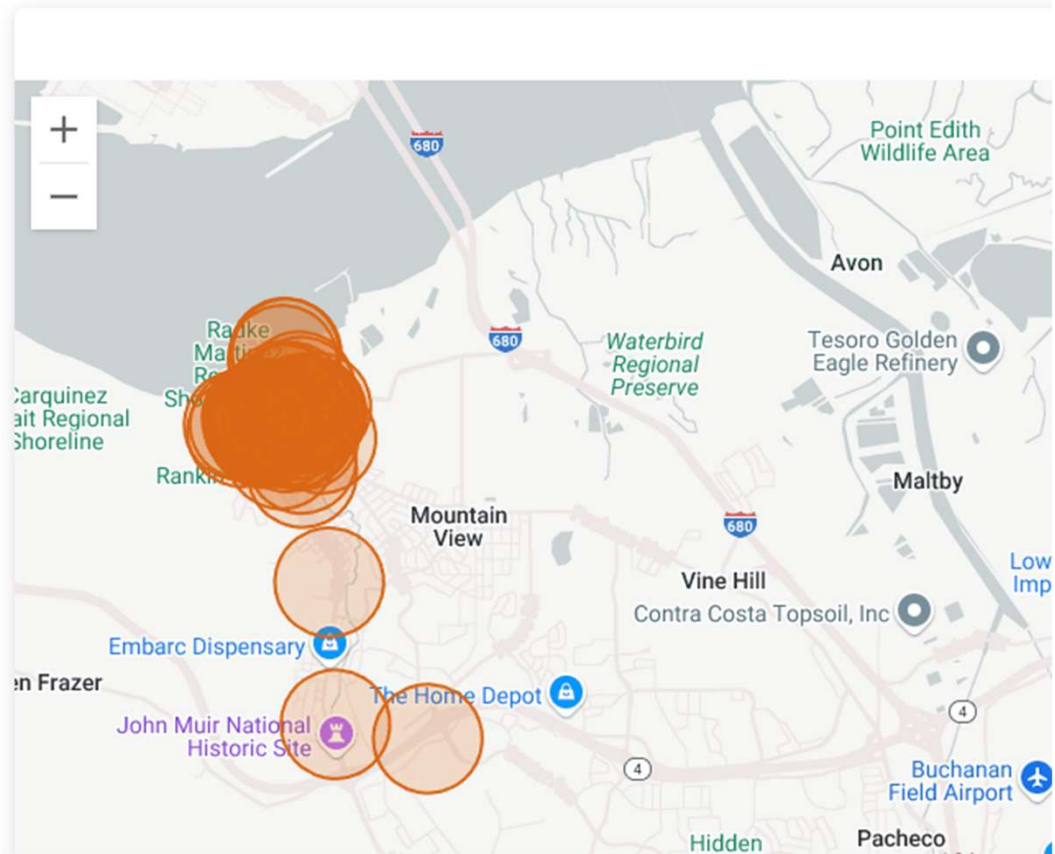
is from 2025/01/01 until 2025/04/22

CORE Team

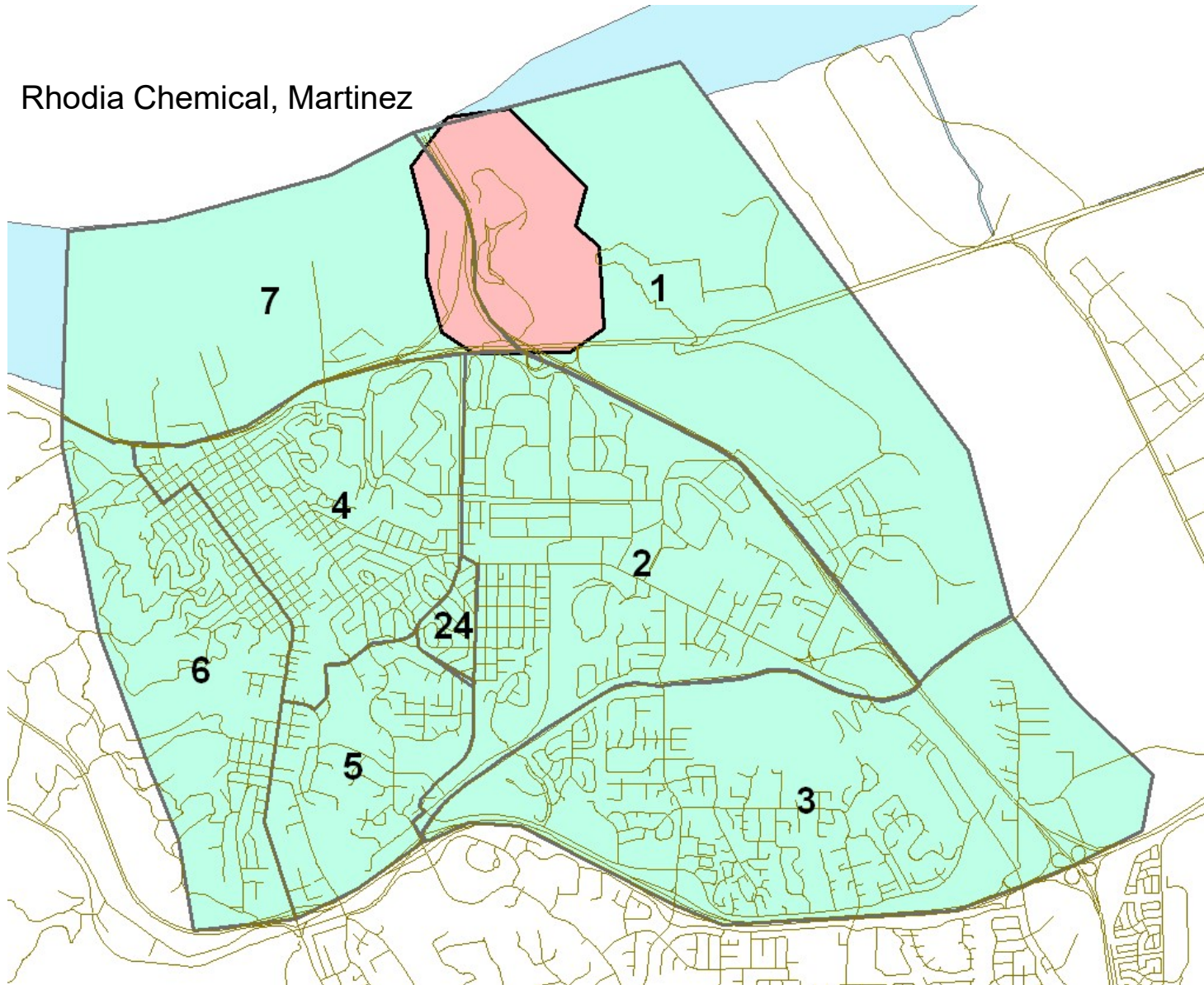
is any value

Contact City

is Martinez



Rhodia Chemical, Martinez



Rodia Chemical, Martinez

Contact Date

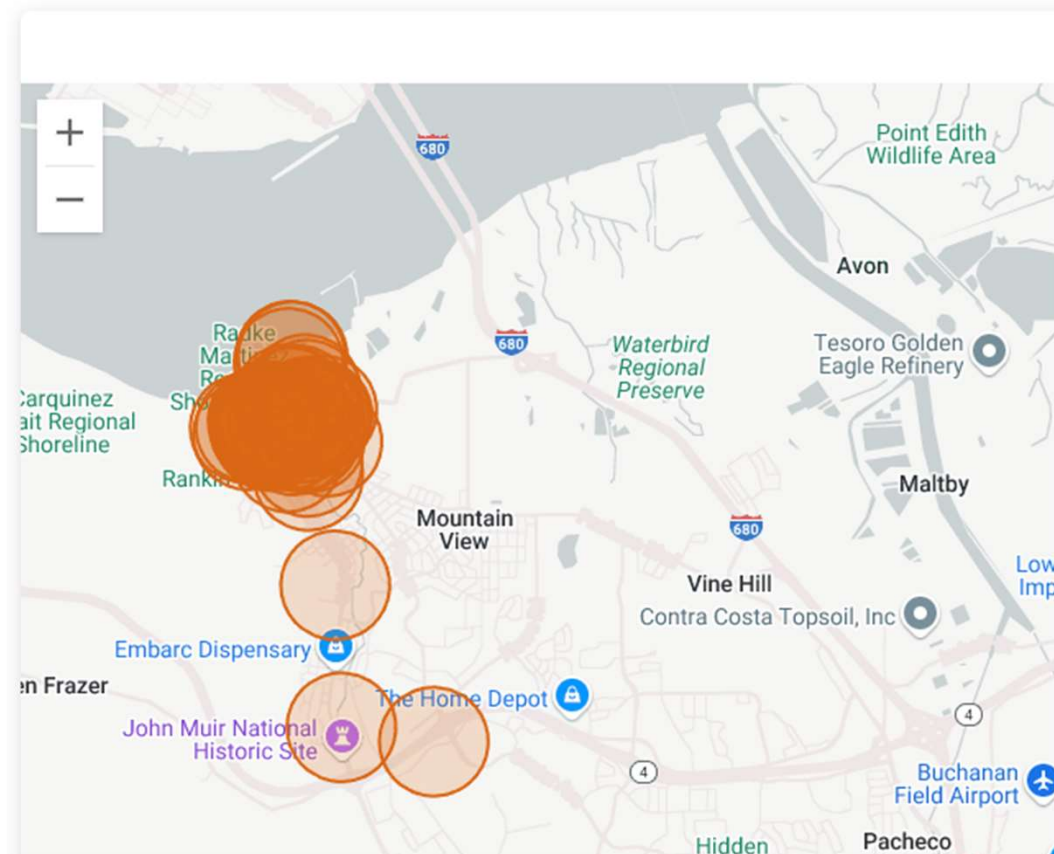
is from 2025/01/01 until 2025/04/22

CORE Team

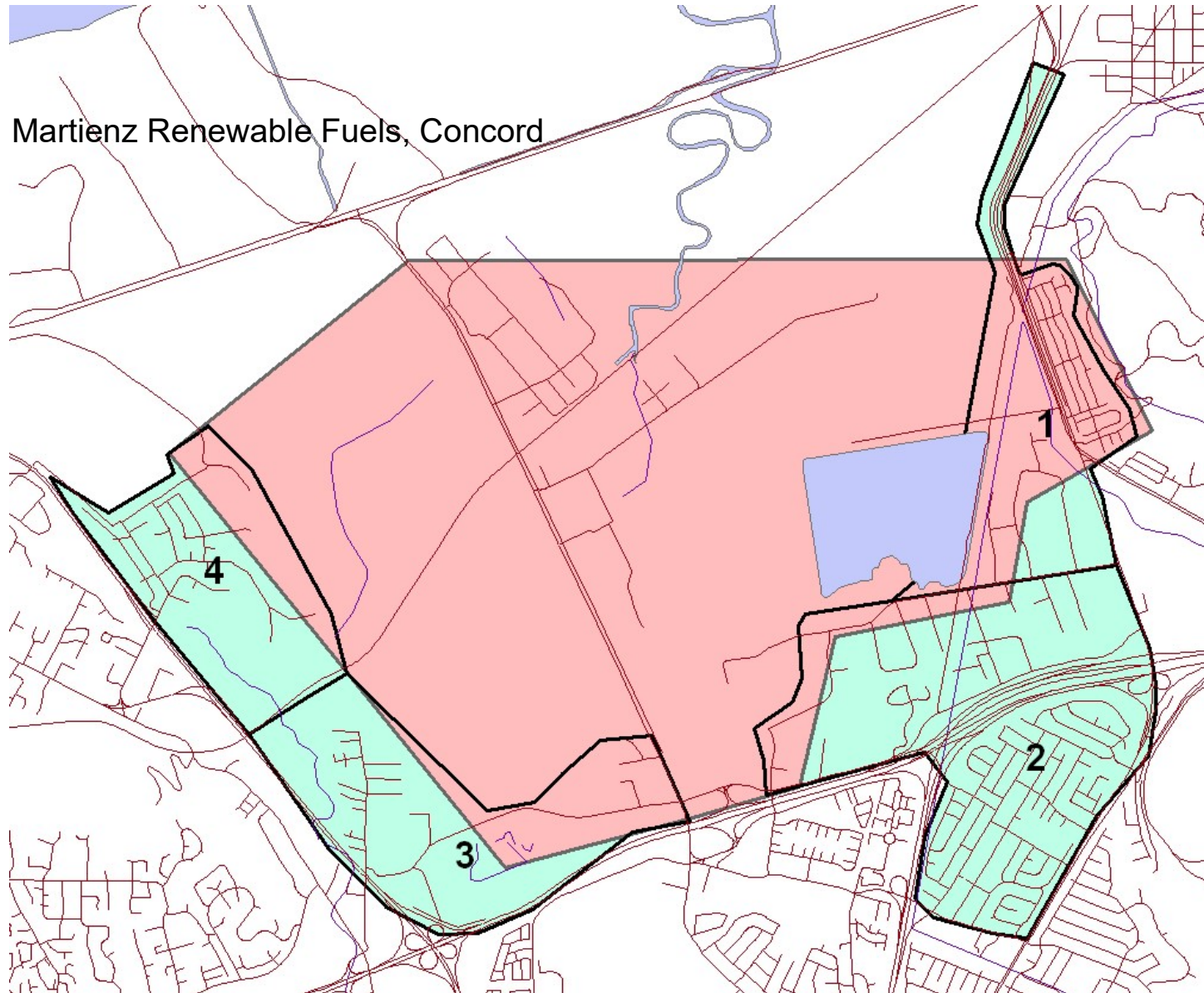
is any value

Contact City

is Martinez



Martienz Renewable Fuels, Concord



Martienz Renewable Fuels, Concord

Contact Date

is from 2025/01/01 until 2025/04/22

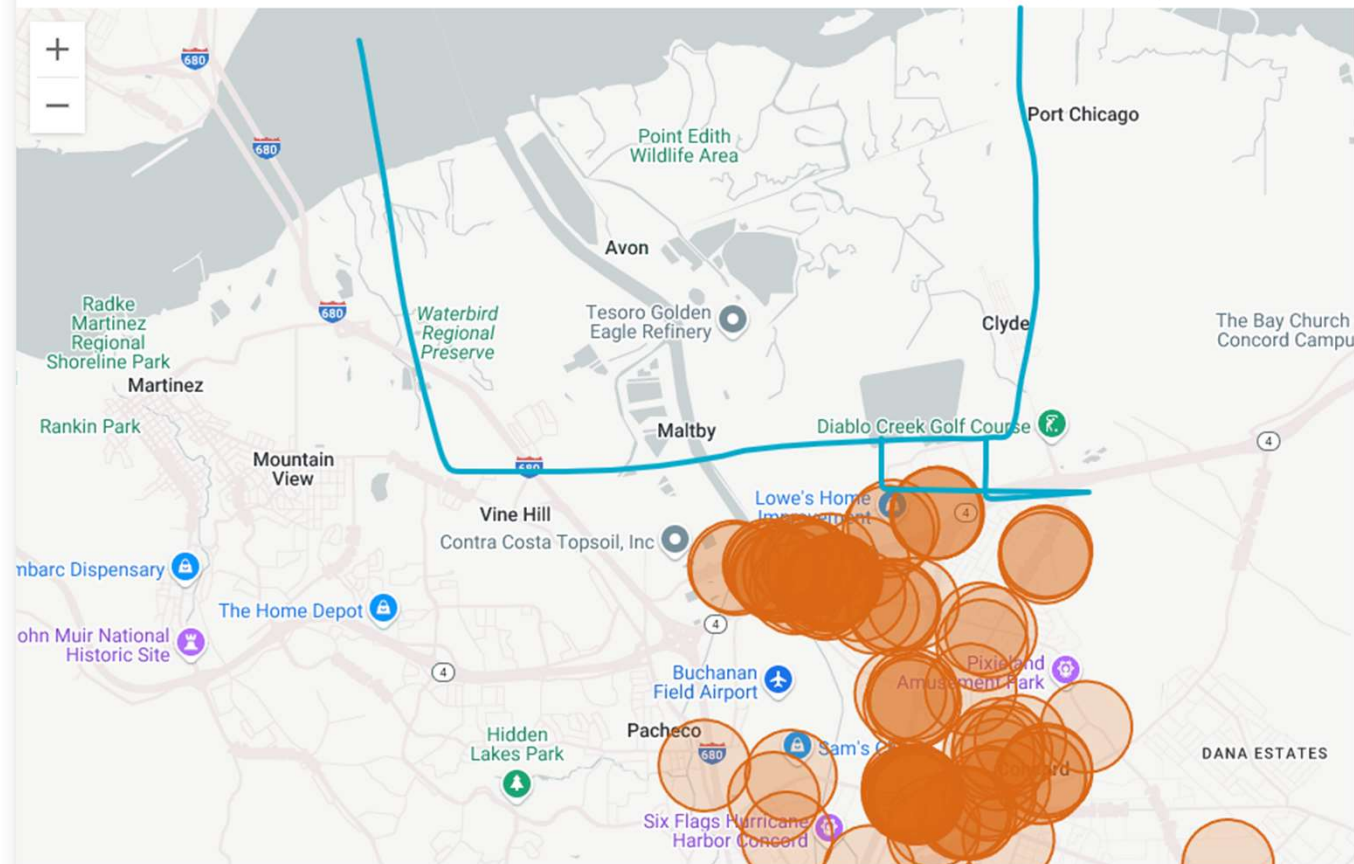
CORE Team

is any value

Contact City

is Concord

Location pins (Map)



Homeless populations should sign up for the Community Warning System messages.

- It is important to inform the homeless in these areas about the Community Warning System and encourage them to sign up for emergency messages. Understanding an emergency alert signal at the last minute can be a challenging and stressful experience; it is better to know the system and recommendations in advance.

