An aerial photograph of rolling green hills with scattered trees, under a sky filled with grey and white clouds. The hills are covered in lush green grass, and the trees are mostly green with some showing early autumn colors.

Contra Costa County's Comprehensive Prevention Plan Implementation Updates

**Juvenile Justice Coordinating Council
January 2026**

Family First Prevention Services Act (FFPSA) Part I

2018 Bipartisan Budget Act



Family First Prevention Services (FFPS) Program

2021 State Assembly Bill 153

Comprehensive Prevention Plan (CPP)



2023 Contra Costa County Plan approved



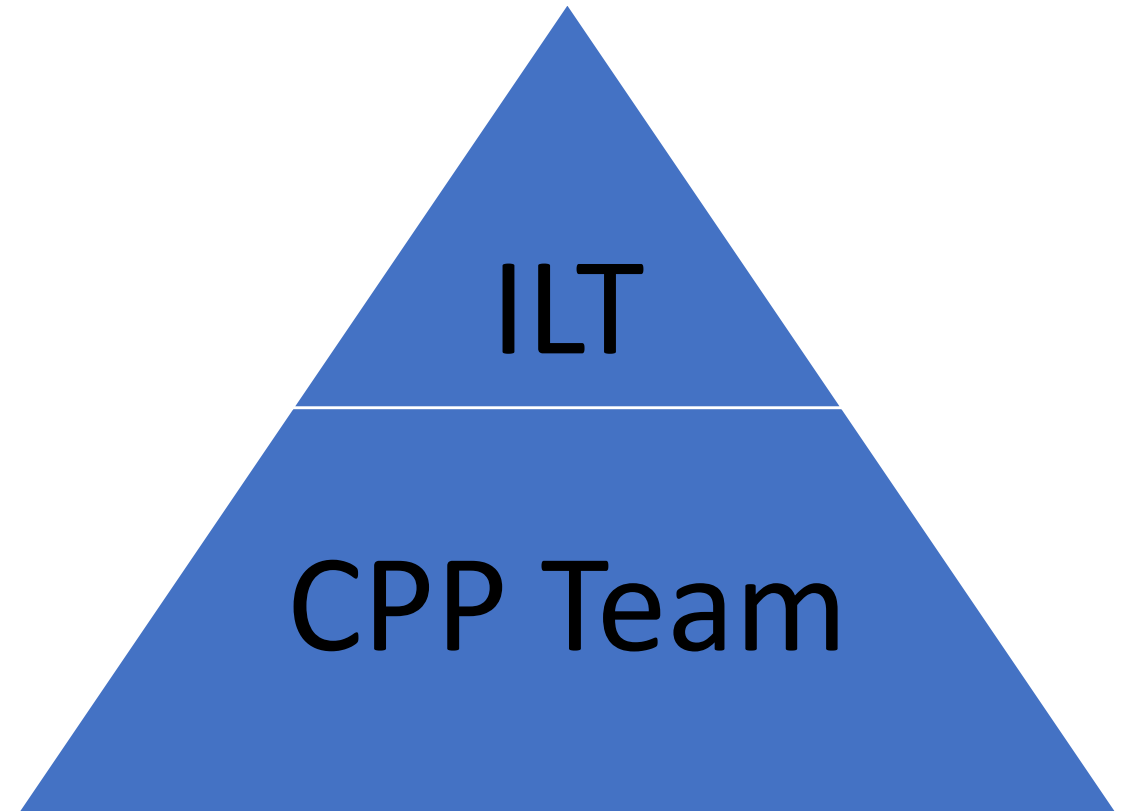
CONTRA COSTA COUNTY CHILDREN AND FAMILY SERVICES

CPP Planning Team Partners



CPP and the ILT

Governance Structure: Leverage AB 2083



Directed by ILT and guided by CPP Team

CONTRA COSTA COUNTY COMPREHENSIVE PREVENTION PLAN

CPP Charter Statement

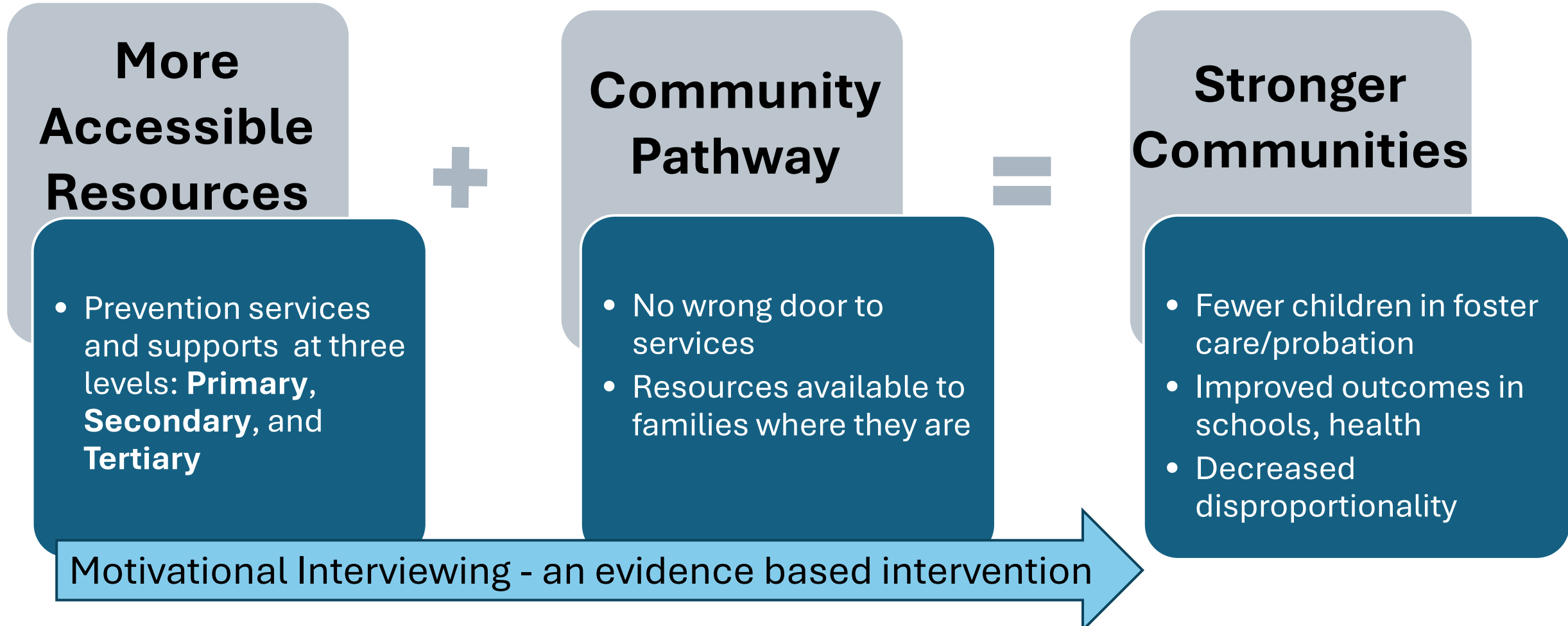
Purpose: To create and oversee a countywide prevention plan which impacts the social determinants of health for our children, families, and community.

Vision: All children and families in Contra Costa County are supported by services and systems that are accessible, have an equitable approach, include culturally and linguistically responsive services, and celebrate all aspects of diversity.

Mission: To create and oversee a seamless cross-sector network that shares collective responsibility for increasing protective factors and positively impacting the quality of the social determinants of health.

CONTRA COSTA COUNTY CHILDREN AND FAMILY SERVICES

Supporting Children and Families to Strengthen Communities



CONTRA COSTA COUNTY COMPREHENSIVE PREVENTION PLAN

Prevention Levels

Primary

Provide a safety net of supportive services that include concrete supports, navigation assistance, and advocacy services to **prevent harm before it occurs.**

Secondary

Families who have one or more risk factors such as mental illness, parental substance abuse, domestic violence, young parental age, etc., receive in-home services to **stabilize families when at a crisis point.**

Tertiary

Services for families involved in child welfare or probation, with an emphasis on **prevention of future harm after harm has already occurred.**

CPP Implementation Update

More Accessible Resources

Antioch
C.A.R.E.S

Concrete/Basic
Needs Supports

Community Pathway

Antioch
C.A.R.E.S

Motivational Interviewing

51 cross sector
service providers
trained in 2024
and 2025

5 Cross Sector
Motivational
Interviewing
Trainers

Community Provider for Prevention Services



Pacific
Clinics®

CONTRA COSTA COUNTY CHILDREN AND FAMILY SERVICES

Antioch C.A.R.E.S.

CPP Pilot began Fall 2024

Primary

- 24-28 English speaking families, 10-16 non English speaking families
- Up to one month services
 - linkages, concrete support

Secondary

- 12-20 English speaking families, 6-12 non English speaking families
- Up to four months services
 - In home case management/parenting support, concrete supports

Tertiary

- 2-6 English speaking families, 2-4 non English speaking families
- Up to six months services
 - In home case management/parenting support, concrete supports

Concrete Supports: A Protective Factor



- “Nearly 85% of families investigated by child protective services have income levels below 200% of the federal poverty line”
- “If low-income families experience at least one material hardship:
 - ~ 3x higher likelihood of neglect investigation
 - ~ 4x higher likelihood of physical abuse investigation”

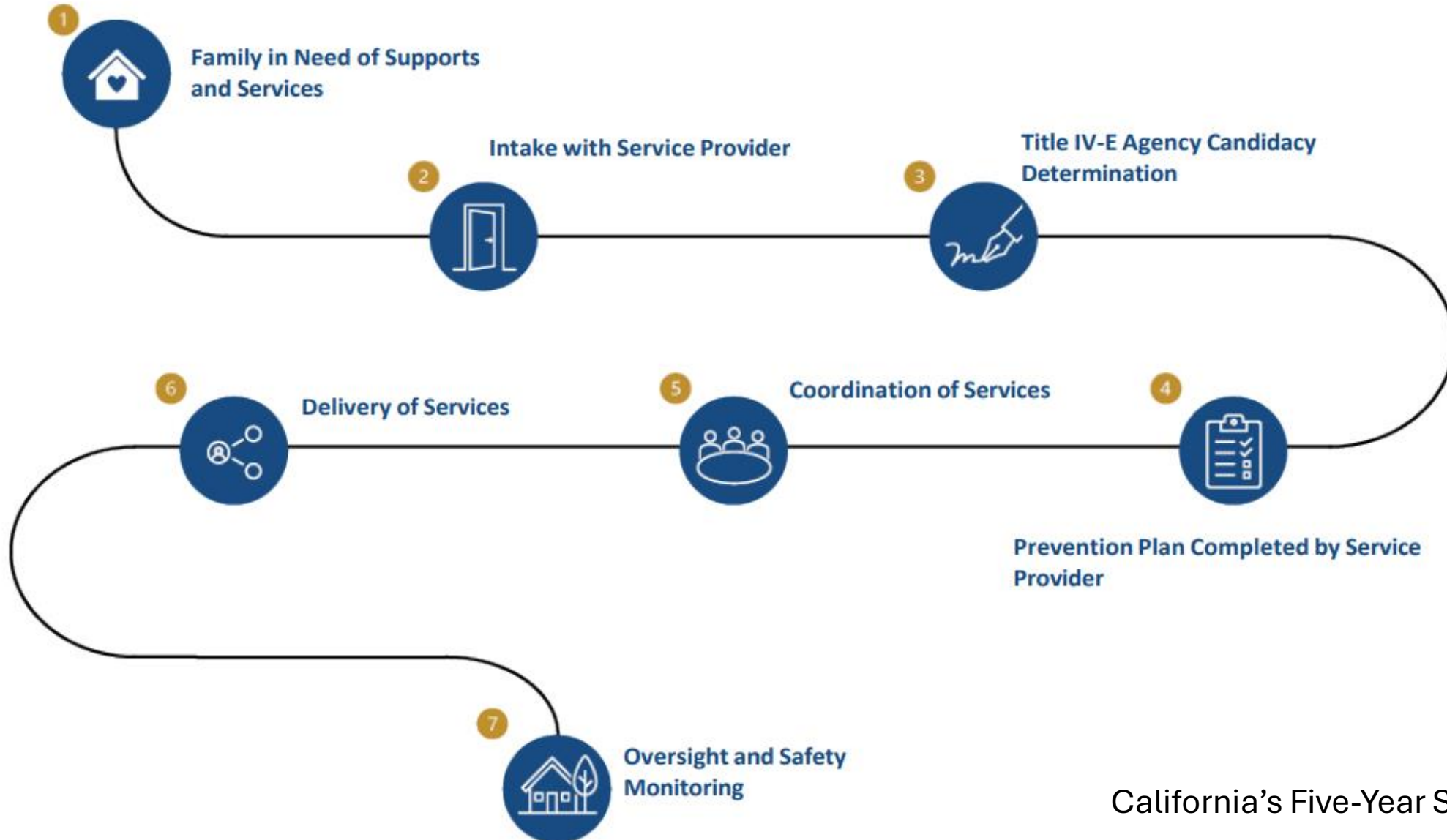
(Child and Family Well-being System: Economic & Concrete Supports as a Core Component” Presented by Clare Anderson, MSW Senior Policy Fellow, Chapin Hall Bay Area Academy 12/14/2023)

Community Pathway: Upstream Prevention

“A community pathway provides families access to community-based services before a call needs to be made to child protective services and/or when direct involvement with CFS or Probation is not warranted. A community pathway can serve to reduce racial disparities by keeping vulnerable children and families who most need supportive services out of ‘the system’ while providing needed services and monitoring safety and risk.” (Contra Costa County Comprehensive Prevention Plan, p. 38).



The Family First Prevention Services Community Pathway



A Complete Community Pathway

Child Welfare

Probation

Schools

CBO/FBO

Community Pathway Entry

Initial Contact

- Self refer via phone or walk-in
- Within 24 hours of referral from CFS or other community agency

Intake

- Use of Motivational Interviewing to identify needs, support change

Candidacy Determination
(Approved by IV-E Agency)

Candidacy met

FFPSA Part 1 Services
(EBP)

Ongoing Risk Assessment and Safety Monitoring
(IV-E Agency responsible)

Candidacy not met

Referred to Services

Family Well-Being Plan
EBP and additional services
Title IV-E match for EBP

Ongoing Risk Assessment and Safety Monitoring
(IV-E Agency responsible)

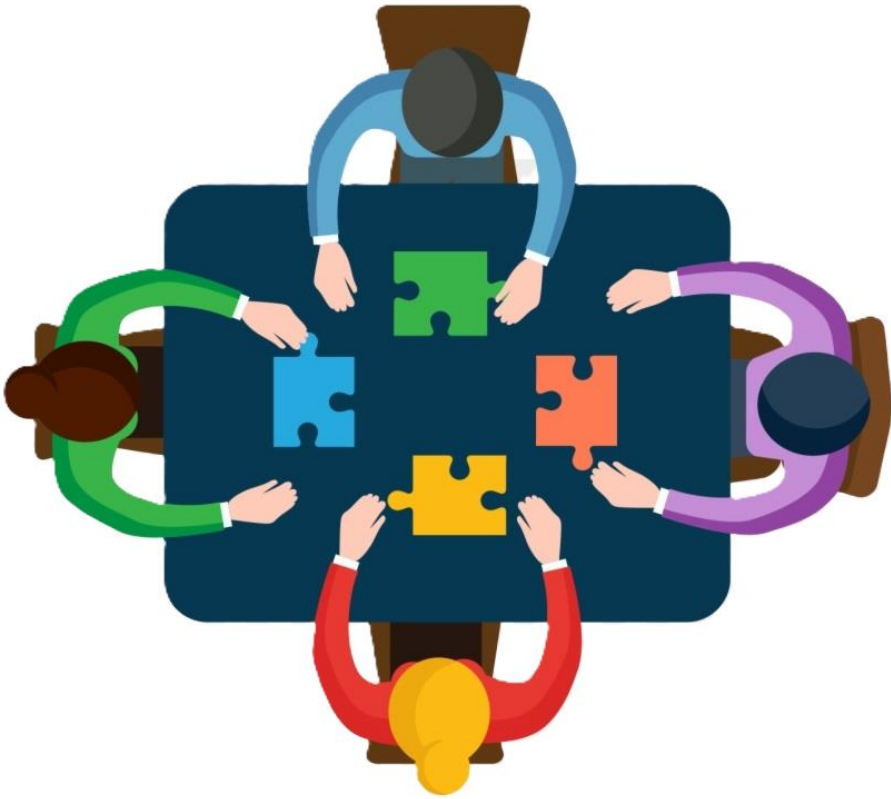
Child Welfare

Schools

Probation

Community/Faith Based Organizations

Finding Hope Amidst Real Challenges



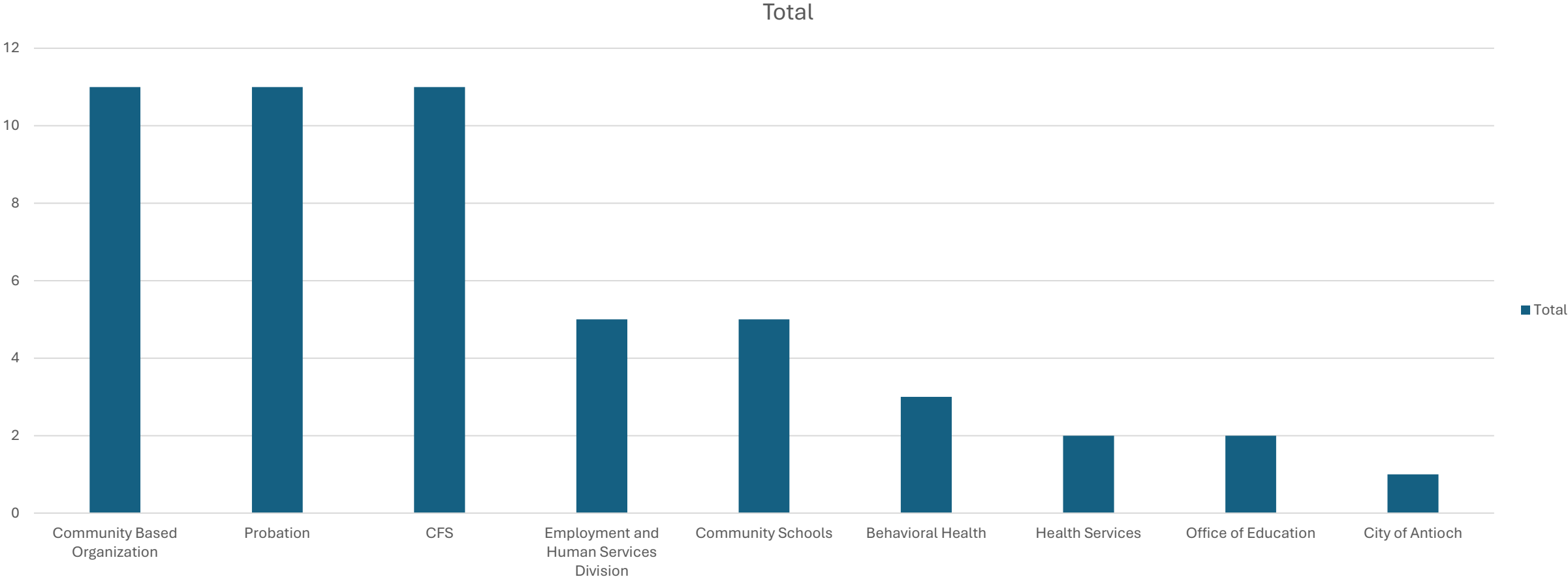
Trust Relationships

Community Voice

Collaboration

Motivational Interviewing Update

51 Service Provider Trained



Contra Costa's Cross Sector MI Trainers



Thenisha Riggs – Senior Health Education Specialist, Contra Costa Health, **Lorena Martinez Castillo** – Staff Development Specialist, Admin Bureau, **Iliana Choate** – Program & Project Coordinator, Policy & Planning, **Tracey Anderson** – Senior Health Education Specialist, Contra Costa Health, **Christopher Kirkpatrick** – Substance Abuse Counselor, Behavioral Health

What's next?

More Accessible Resources

Antioch CARES

Concrete/Basic Needs Supports

Expand the EBP Service Array

Community Pathway to Differential Response and Family Preservation

Evidence Based Practices

Additional Motivational Interviewing training opportunities

Continuous Quality Improvement and training plan

Expand the EBP Service Array

Community Pathway

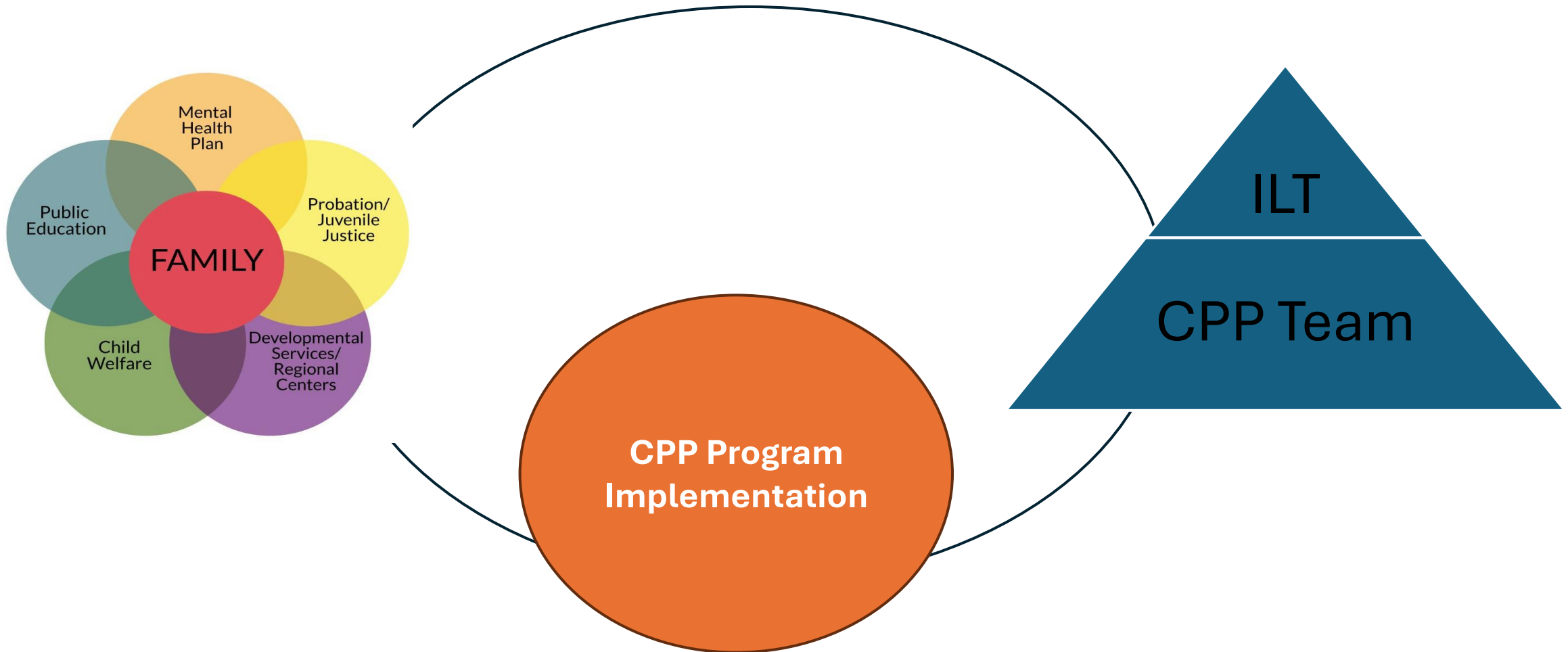


Leverage the CPP Team and ILT to guide, advise, and inform development and ensure sustainability

Antioch CARES

Community Pathway to Differential Response and Family Preservation Services

Planning, Implementation, and a Feedback Loop



CONTRA COSTA COUNTY COMPREHENSIVE PREVENTION PLAN

**What is your/your
organization's role in
Prevention? In Community
Supporting?**

We Want your Input! Join Us!

Ana Kaye

kayea@ehsd.cccounty.us

CONTRA COSTA COUNTY CHILDREN AND FAMILY SERVICES

Additional Resources

[CQI-Measurement-Framework-Brief_Chapin-Hall.pdf](#)

[California-Family-First-Prevention-Services-Continuous-Quality-Improvement-CQI-Plan.pdf](#)

[CA-Title-IVE-Clearinghouse-EBP-Matrix_v2-FINAL-Jan2023.pdf](#)

[Interagency Letter Guidance on Payer of Last Resort FFPSA](#)

FFPSA and CPP Funding

Time Limited Allocations

- Supports prevention services outlined in CPPs
- Must supplement *not* supplant existing services
- Can fund Primary, Secondary, and Tertiary Level Prevention

On Going Federal Match Funds

- Available now: 50% match funds for training and administrative costs related to prevention
- Available fall 2026: 50% match funds for approved EBPs for children/families who meet candidacy (Secondary and Tertiary only)

Expansion Options:

- Support BH in implementing an EBP(s) identified in the State's BH Integrated Plan requirements in order to focus on CPP clients and increase access to timely services.
- Support an organization that already provides one of the 10 approved EBP and wants to expand services.
- Expand current county contracts for prevention services to include an approved EBPs – Family Preservation, Differential Response, Kinship

Approved Evidence Based Practices

- Nurse-Family Partnership
- Healthy Families America
- Parents As Teachers
- Parent-Child Interaction Therapy
- Multisystemic Therapy
- Brief Strategic Family Therapy
- Family Check-Up
- Functional Family Therapy
- Homebuilders
- Motivational Interviewing