



CONTRA COSTA
transportation
authority

GoMentum 2.0: A Catalyst for the Northern Waterfront



What We Do



PEDESTRIAN

Improvements to sidewalks, crosswalks, trails, and paths



LOCAL STREETS

Smooth traffic flow on major roads and make surface improvements such as pothole repairs



BUSES

Invest in a reliable, comfortable and convenient bus network



SAFE ROUTES TO SCHOOLS

Focus on programs and projects aimed at bicycle and pedestrian safety for K-12 students



FERRIES

Expand ferry system by looking to ferries as an alternate commute method between West County and San Francisco



BICYCLE

Invest in safe routes and infrastructure improvements for bicyclists



BART

Improve BART service and stations, extend routes and increase parking



HIGHWAYS

Complete Contra Costa's highway system, and improve air quality and noise protection along corridors



INNOVATIVE SOLUTIONS

Implement smart transportation infrastructure to reduce congestion and encourage greener travel



PROGRAMS FOR SENIORS AND DISABLED

Enhance transit options to improve mobility for seniors and people with disabilities

Why GoMentum?

Creating GoMentum Station has given CCTA the ability to partner with the private sector and have a **front row seat to the future.**

ECONOMIC GROWTH
& JOB CREATION

EFFICIENT MOBILITY

ENHANCED SAFETY

HEALTHIER ENVIRONMENTS

Goals and Objectives

- Seeing tomorrow's technology being tested today
- Helps us plan for the future
- Helps us understand if this technology will work for our residents
- Helps identify regulatory reforms needed for an integrated, zero emission, and more accessible countywide transportation system



CONNECTED AND AUTOMATED VEHICLE PROVING GROUND MAP



LEGEND

| | | |
|-----------------------|---------------------------|-----------------|
| Testing Area Boundary | Kinne Blvd. Staging Areas | Bunker B Office |
| Bunker City | Lookout Loop | Bunker C Office |
| Downtown | Tunnels | Bunker D Office |
| Tunnel Road | Firehouse Office | 12th St. Office |
| Kinne Blvd. | Bunker A Office | Kinne Office |

RULES:

- Stay on approved testing roads at all times
- Obey posted speed limits and traffic patterns
- Kinne Boulevard is a shared use road - please be aware of other vehicles
- If you have not reserved a particular testing zone, do not enter that testing zone
- Use of drones is prohibited
- No smoking
- Weapons are prohibited

For emergencies, call:
925-246-3911
(do not call 911)

For gate access, call:
925-705-5707

GoMentum Operations
Staff: 844-702-6248



GoMentum Station Improvements & Offerings

LANE VARIETY



ROADWAY INFRASTRUCTURE



TRAFFIC CONTROL



What companies are testing?

GoMentum Station provides customers a proving ground to test not only futuristic technologies, but those that are available in vehicles today.

Technologies being tested

- Fully autonomous passenger vehicles
- Commercial autonomous trucking
- Short distance logistics (e.g. pizza delivery)
- Testing on commercially available ADAS Systems
- Components (LIDAR & Camera) testing
- Advanced testing equipment and technologies
- EV & ICE powered vehicles
- University-based research studies
- Looking forward to next phase of GoMentum

GoMentum 2.0 Vision

1. Support California, Contra Costa, and the Bay Area Megaregion's economic competitiveness and job growth;
2. Partner with our communities to improve safety, mobility, and the environment;
3. Create a world-class test bed with active industry and government participation; and
4. Utilize the outcome to address our transportation challenges in real-world environments in Contra Costa County, California, and beyond.
5. Prioritize education and outreach to inform future riders of these advancements in mobility.
6. Develop next generation workforce development programs and education

What is a
Proving
Ground?



DEVELOPMENT LED BY VEHICLE FUNCTIONALITIES

MAIN VEHICLE FUNCTIONALITIES



PASSIVE SAFETY · ACTIVE SAFETY · NVH · POWERTRAIN · COMFORT ·
RELIABILITY

BODY + CLOSURES + TRIMS + CHASSIS + POWERTRAIN + ELECTRONICS

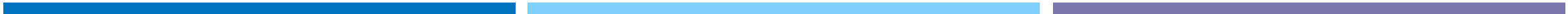
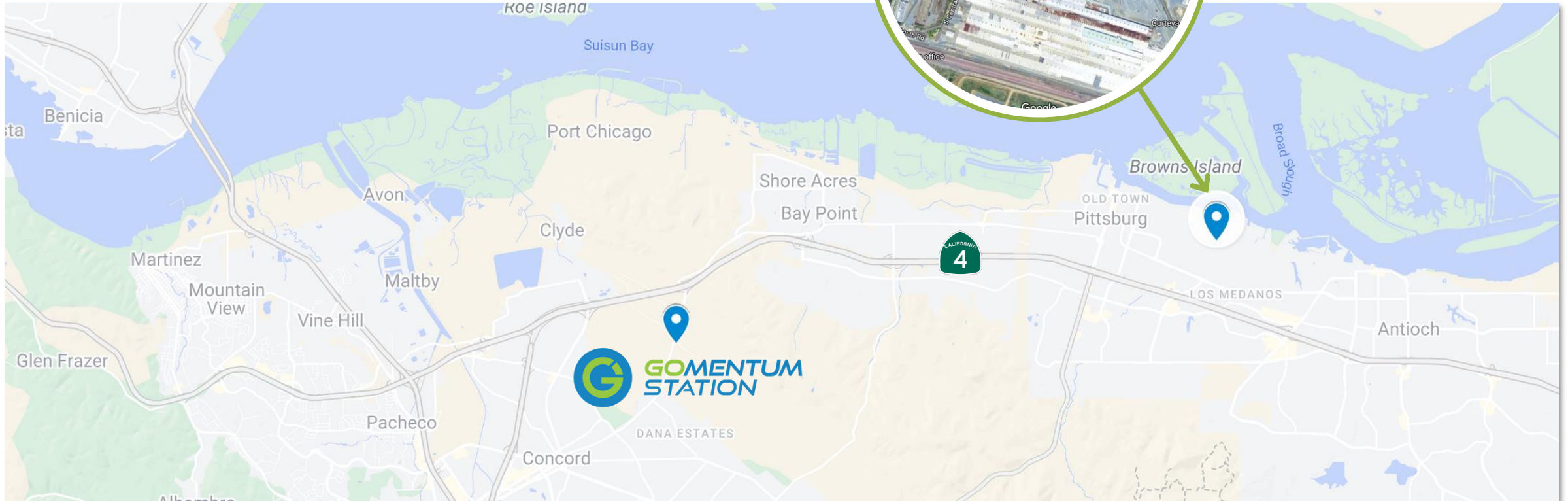
NVH : Noise, Vibration, and
Harshness



CONTRA COSTA
transportation
authority



**GOMENTUM
STATION**



Annual Economic Benefits of GoMentum Station

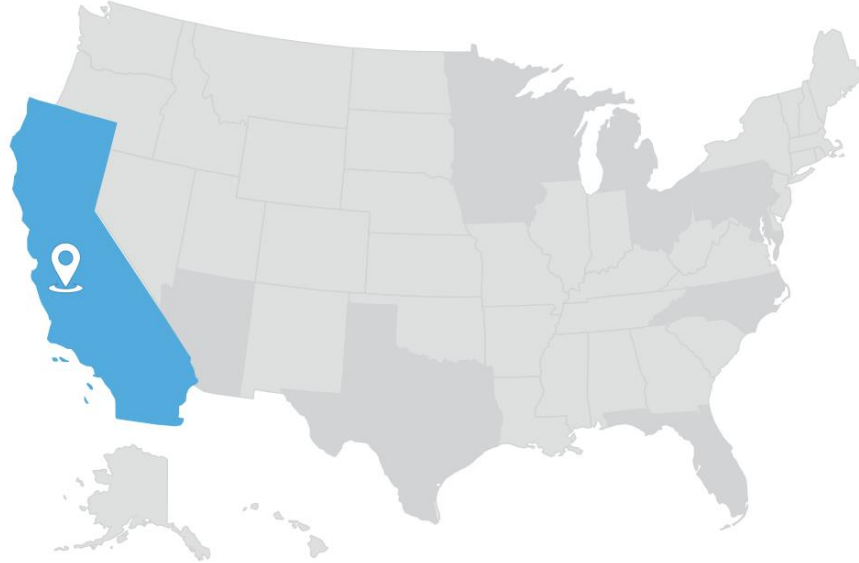
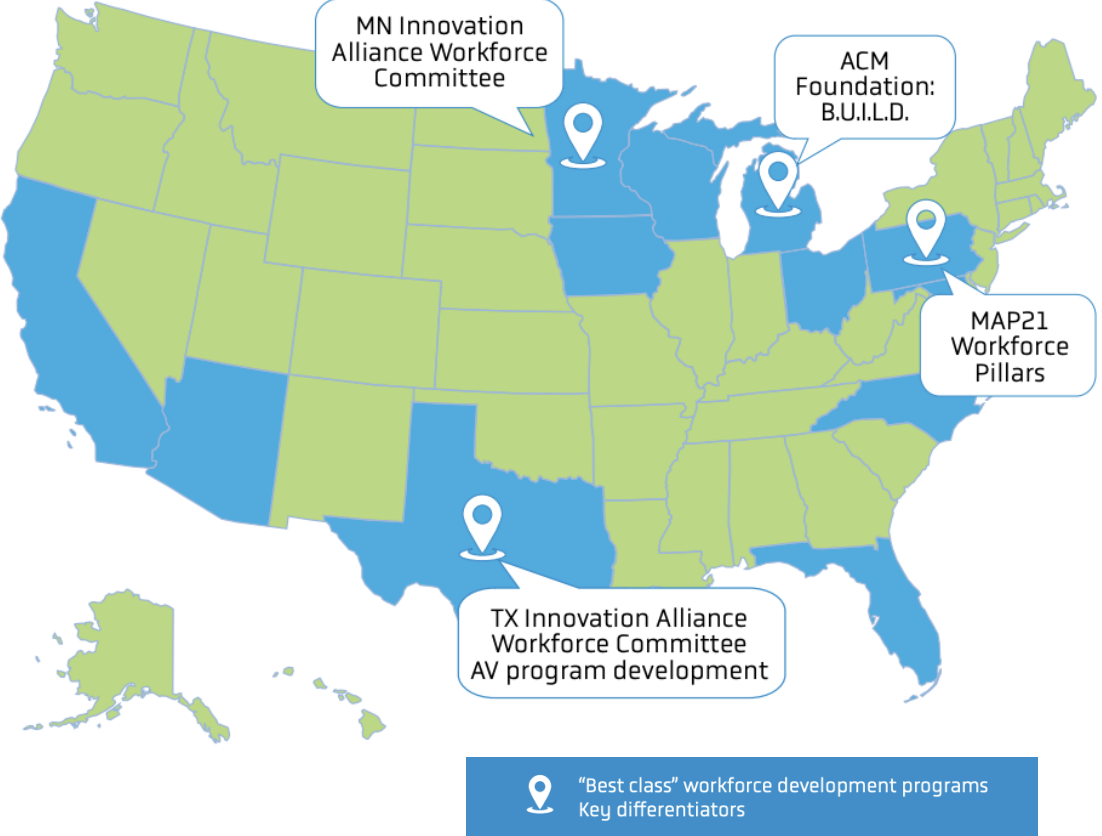
| | | Year 3 | | | Year 15 | | |
|-----------------------------|-------------------|--------|--------------------|--------|---------|--------------------|---------|
| | | Direct | Indirect & Induced | Total | Direct | Indirect & Induced | Total |
| GoMentum Station Operations | Employment | 25 | 31 | 56 | 81 | 101 | 182 |
| | Labor income | \$5.0 | \$2.4 | \$7.4 | \$16.2 | \$7.8 | \$24.0 |
| | Value added (GDP) | \$5.6 | \$3.7 | \$9.2 | \$18.0 | \$11.9 | \$29.9 |
| | Economic output | \$11.2 | \$5.9 | \$17.1 | \$36.2 | \$19.0 | \$55.3 |
| Out of Area Clients | Employment | 60 | 15 | 76 | 98 | 25 | 123 |
| | Labor income | \$2.2 | \$1.2 | \$3.4 | \$3.5 | \$2.0 | \$5.5 |
| | Value added (GDP) | \$3.6 | \$2.0 | \$5.5 | \$5.8 | \$3.2 | \$9.0 |
| | Economic output | \$6.3 | \$3.2 | \$9.5 | \$10.2 | \$5.2 | \$15.4 |
| Permanent Clients | Employment | 0 | 0 | 0 | 297 | 175 | 472 |
| | Labor income | \$0.0 | \$0.0 | \$0.0 | \$32.7 | \$13.2 | \$45.9 |
| | Value added (GDP) | \$0.0 | \$0.0 | \$0.0 | \$35.5 | \$20.5 | \$56.0 |
| | Economic output | \$0.0 | \$0.0 | \$0.0 | \$55.2 | \$32.6 | \$87.8 |
| Total Impact | Employment | 85 | 46 | 132 | 476 | 301 | 777 |
| | Labor income | \$7.2 | \$3.7 | \$10.8 | \$52.4 | \$23.1 | \$75.5 |
| | Value added (GDP) | \$9.1 | \$5.6 | \$14.8 | \$59.4 | \$35.6 | \$95.0 |
| | Economic output | \$17.4 | \$9.1 | \$26.5 | \$101.5 | \$56.9 | \$158.4 |

Note: Dollars are in millions (\$ x million)

Career Pathway and Program Development



Building a world class workforce development program



- Next steps for GoMentum to create a best-in-class workforce development center
1. Build a statewide Innovation Alliance
 2. Create the GoMentum career pathway and programming
 3. Research the highest demand middle-skills workforce needs



The **GoMentum Innovation Alliance** will foster collaboration among **public, private, labor, and academic sectors** driving workforce development in the transportation and mobility industry



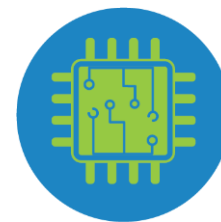
Automation



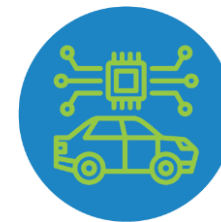
Connectivity



Electrification



Digitization



Systems

WORKFORCE AND SKILL DEVELOPMENT

Evolve

CCTA aims to prepare the current workforce with the skills and knowledge necessary to design, develop, test, and maintain emerging technology and the infrastructure with which they interact



Establish GoMentum Innovation Alliance

Support research,
program planning
and development



Gaps and Needs Analysis

Research to
identify future
workforce
opportunities



Program Development

Lead in the planning
and development of
reskilling and
upskilling programs



Pilots

Support pilot
programs that
increase
opportunity and
training to Contra
Costa residents

ENHANCED OFFERINGS FOR YOUTH

Explore and Experience

Interactive Experiences

CCTA is proposing the addition of an education space to the current GoMentum Station to allow for designated learning spaces and facilities – allowing students an in-depth look at CAV tools and technologies



Increased Access

CCTA envisions partnering with youth centers throughout the County and targeting outreach and offerings to equity priority communities



STEM Summer Academies

CCTA is exploring offering summer academies for students to explore theory and practice in weeklong experiences that blend hands on exploration, problem-solving, and presentations by experts, combined with college credit wherever possible.

School Partnerships

CCTA is proposing to work with current educators and schools to ensure educational offerings are aligned with - or enhance - current curriculum





We have a podcast!

Learn more about CCTA's
innovative work.

ccta.net/about-us/on-the-patio-podcast



Thank you!

Timothy Haile
Executive Director
thaile@ccta.net



@Contra Costa Transportation Authority
@Tim Haile



@Contra Costa Transportation Authority



@ccta
@thaile

