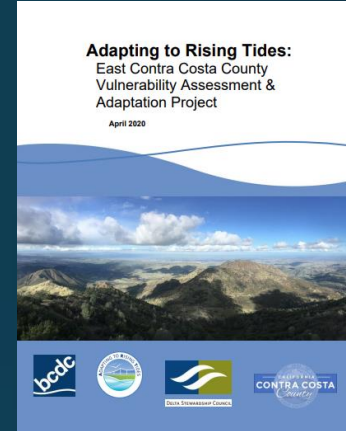
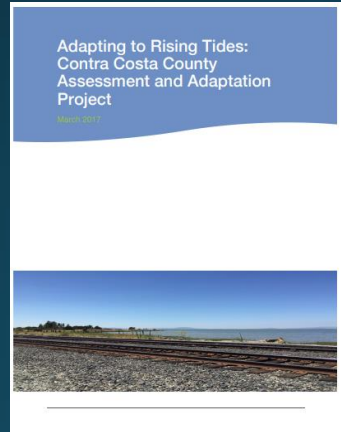


# Adapting to Rising Tides (ART)

February 21, 2024

# Two ART Studies for Contra Costa

West & Central  
County from  
Richmond to  
Bay Point (2017)



East County from  
Pittsburg to  
Clifton Court  
Forebay (2020)

# Vulnerability Assessment

Sectors were analyzed through four lenses of vulnerability: information, governance, function, and physical condition

## West County ART

- Business and Industry
- Contaminated Lands
- Energy
- Ground Transportation
- Housing
- Natural Areas
- Parks and Recreation
- People
- Public Services
- Seaport and Marine Oil Terminals
- Water Management

## East County ART

- Agriculture
- Business and Industry
- Communities
- Community Engagement
- Critical Facilities and Services
- Delta Islands
- Energy
- Natural Areas and
- Outdoor Recreation
- People
- Transportation
- Water
- Wastewater
- Flood and Stormwater

# Project Key Planning Issues

## West County ART

1. Water-dependent Industries
2. Creek-side Communities
3. Access to Services
4. Ad-hoc Flood Protection
5. Jobs and Employment Sites
6. Parks and Open Space

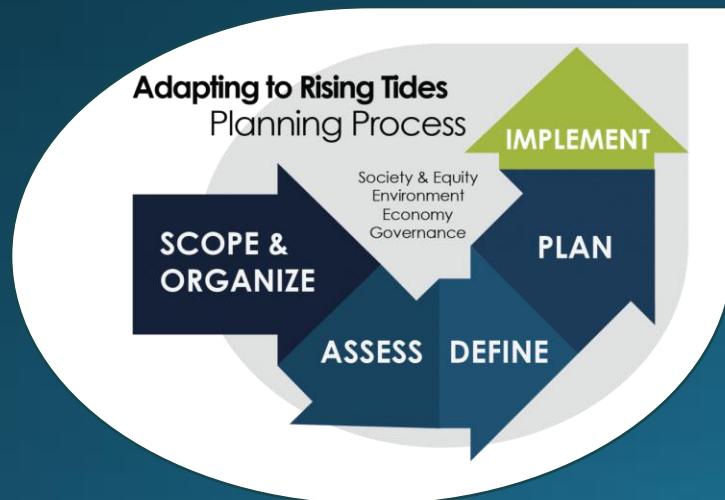
## East County ART

1. Shoreline Industries
2. Vulnerable Communities
3. Access to Services
4. Ad-Hoc Flood Protection
5. Parks and Open Space
6. Levees, Reclamation and Subsidence
7. Worsening Water Quality

# Adaptation Responses Overarching Themes

## West County ART

1. Resilient transportation system
2. Integrated shoreline management
3. Targeted education and outreach; and
4. Improved emergency and hazard mitigation plans



## East County ART

1. A collective decision-making framework to align various interests and agencies;
2. Strengthening relationships between agencies, NGOs, nonprofits, faith-based organizations, and community groups;
3. A resilient transportation and energy system;
4. Having a regional understanding and monitoring program for salinity, sea level rise, and levee stability;
5. Wetland and Delta island restoration;
6. Education and outreach; and
7. Creating a system of prioritization for improving the shoreline

# West County ART Priority Actions

1. Develop and disseminate guidance to business and industry on the best practices for reducing the potential impacts of flooding and sea level rise on their facilities and the services and systems they rely on.
2. Create a public-private shoreline working group tasked with developing a plan to fund and implement integrated shoreline solutions to reduce flood risk
3. Develop a county-wide program to monitor, maintain, and repair (as feasible) at risk shorelines most in need of intervention
4. Establish a public-private partnership to better understand the consequences of flooding on commercial and industrial supply chains, employee access to job sites and the regional transportation networks goods and commuters rely on

# East County ART Adaptation Responses

- Adaptation Responses for the 7 Key Planning Issues formatted by top priority adaptation action & low-hanging fruit adaptation action for near-, mid-, and long-term

Key Planning Issue #3: Access to Services		
Timeline	Priority Adaptation Response	Low-Hanging Fruit Adaptation Response
Near-Term	Conduct locally refined analyses to determine the sources of, and potential solutions to resolve, flooding that could damage or disrupt local and regional routes and nodes that are critical for emergency response and for communities to access necessary services.	Build or strengthen relationships between public agencies, private entities, nonprofit, community, and faith-based organizations, and neighborhood groups to increase flood resilience.

# Coming out of East ART

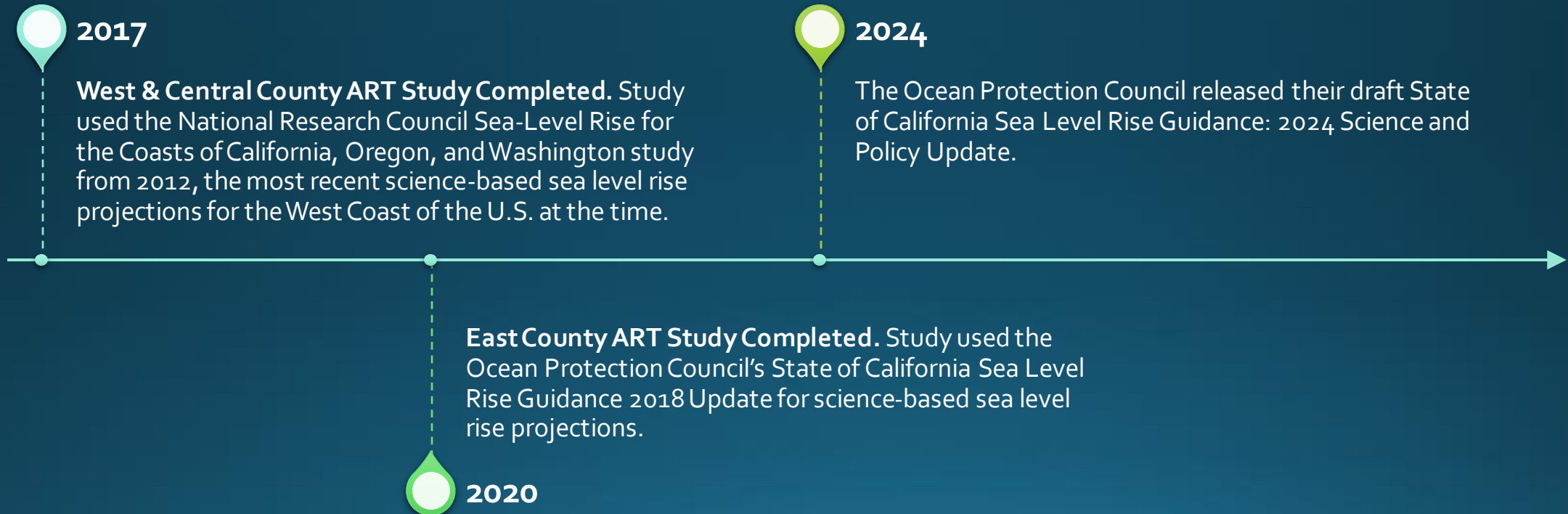
A robust discussion at the last Working Group meeting focused on ways the ART process and SLR adaptation planning and implementation could be progressed so the implementation of some of these plans would become more realistic.

Identified hurdles to implementation:

- Need to create a core ask, clear message, and educating elected officials about ART findings
- No overarching authority to move any of the actions forward
- Continuing the working group and expanding it
- Lack of funding to do adaptation planning



# Since the ART studies were completed, new (draft) Sea Level Rise Guidance has been released



# Where has ART led?

- Informed the inclusion of actions related to sea level rise in the draft General Plan and Climate Action Plan
- Informed the partners and stakeholders to be included in the County's Sea Level Rise Coalition
- Provided a foundation for the pursuit of grants to develop a Contra Costa County Sea Level Rise Resilience and Adaptation Plan

## Where can ART go?

- By updating the ART studies with the best available science and upcoming guidance, these vulnerability assessments can provide a deeper understanding of specific SLR risks across the county.



Lower Walnut Creek Restoration Project on May 5, 2022

# Thank you!

If you have any questions, please email Ryan Hernandez at [Ryan.Hernandez@dcd.cccounty.us](mailto:Ryan.Hernandez@dcd.cccounty.us).