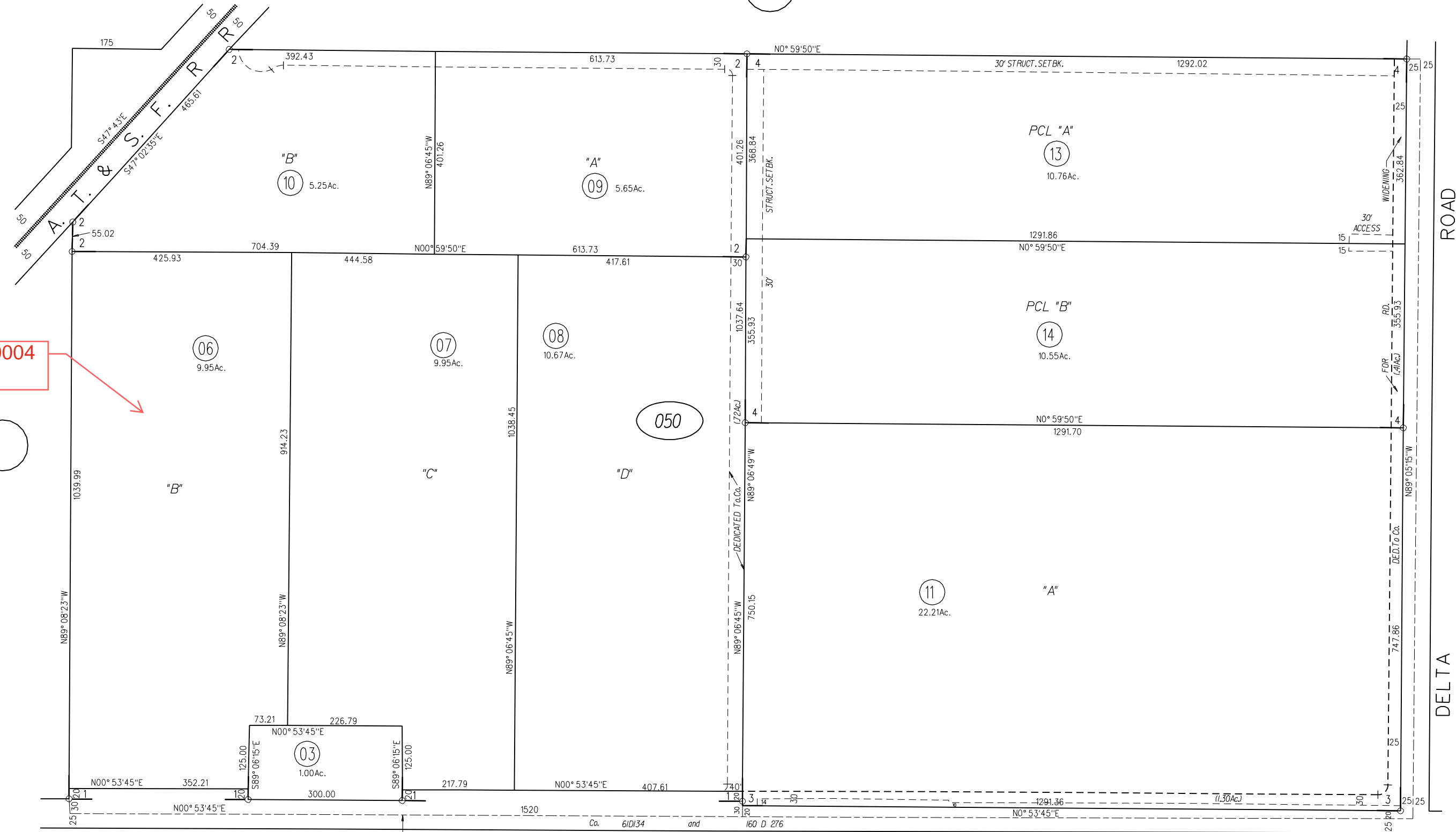


POR S 1/2 SEC. 32 T2N R3E MDBM

- 1- 37 P.M. 10 2/28/75
- 2- 72P.M.22 & 23 11-29-78
- 3- 104P.M.46 2-15-83
- 4- 148PM45 10-17-90

6

CDLP26-00004  
Project Site



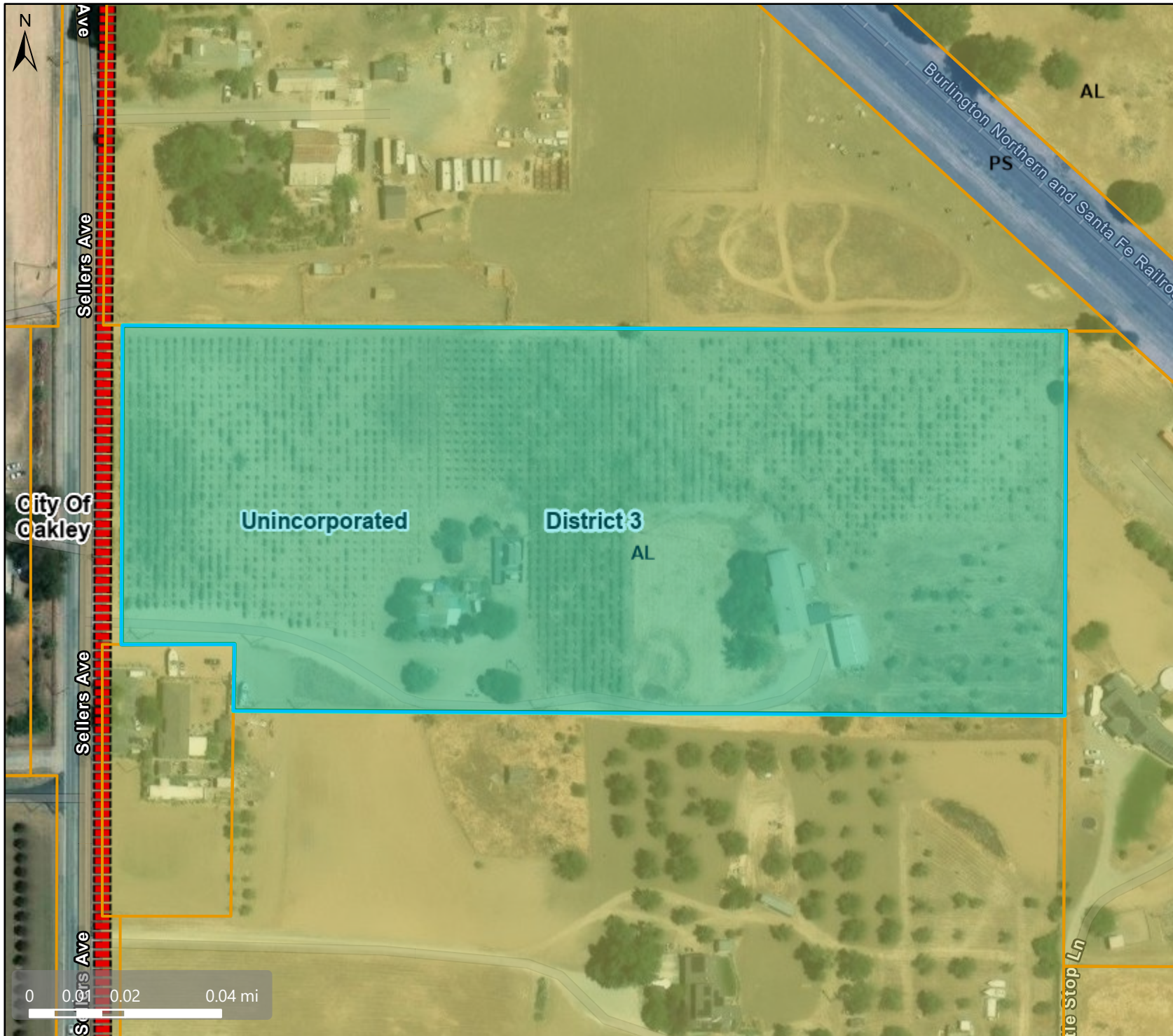
NOTE: THIS MAP WAS PREPARED FOR ASSESSMENT PURPOSES ONLY. NO LIABILITY IS ASSUMED FOR THE ACCURACY OF THE INFORMATION DELINEATED HEREON. ASSESSOR'S PARCELS MAY NOT COMPLY WITH LOCAL LOT SPLIT OR BUILDING SITE ORDINANCES.

P.B.  
33

050



# General Plan > AL Agricultural Lands



## Map Legend

Assessment  
Parcels

### Planning

#### General Plan

PS (Public and  
Semi-Public)

AL (Agricultural  
Lands) (1 du/10  
ac) (1 du/20 ac  
in DPZ)

Unincorporated

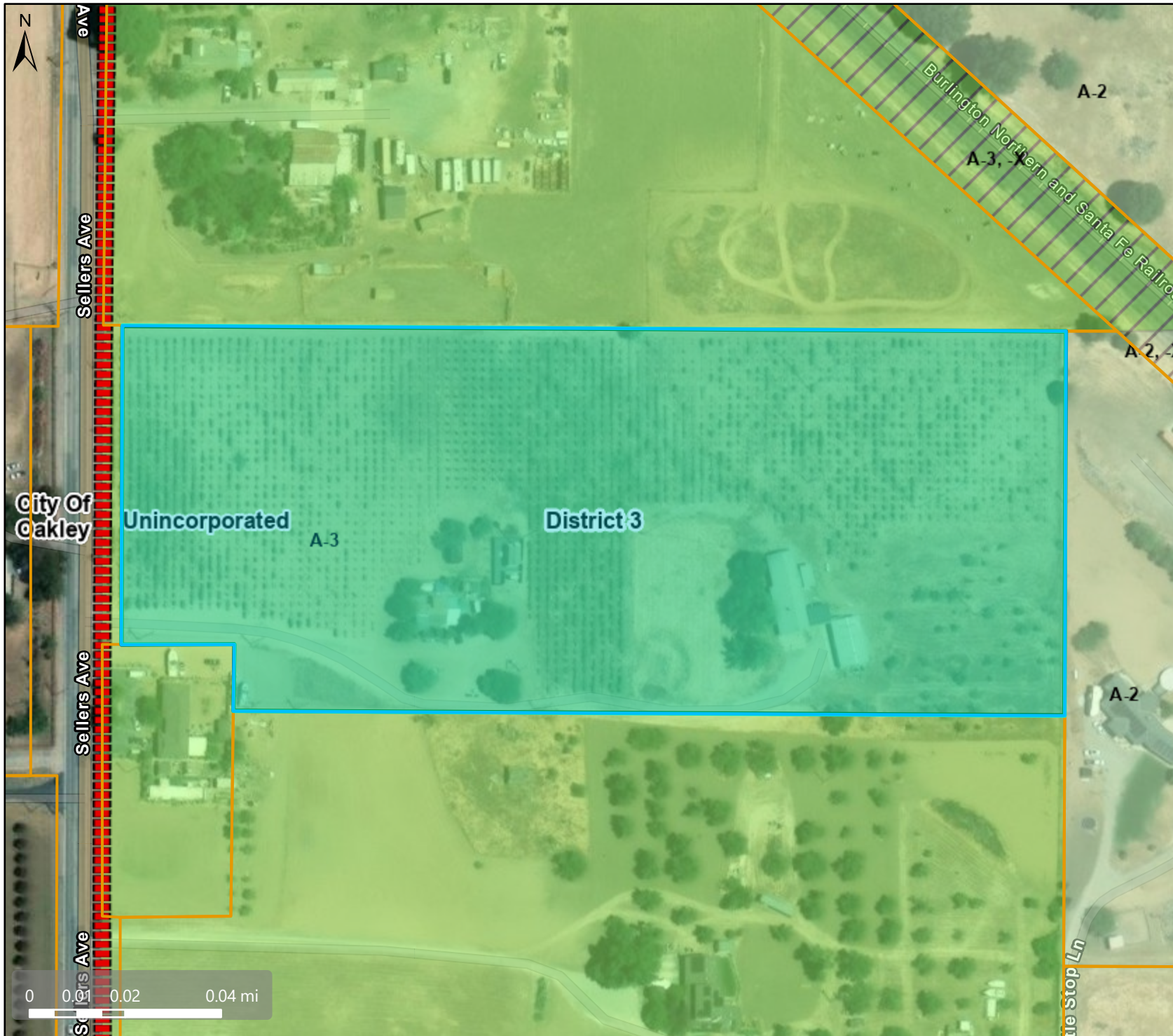
City Limits

Board of  
Supervisors'  
Districts

This map is a user generated, static output from an internet mapping application and is intended for reference use only. Data layers that appear on this map may or may not be accurate, current, or otherwise reliable.  
THIS MAP IS NOT TO BE USED FOR NAVIGATION.  
CCMap is maintained by Contra Costa County Department of Information Technology, County GIS. Data layers contained within the CCMap application are provided by various Contra Costa County Departments. Please direct all data inquiries to the appropriate department.

Spatial Reference  
PCS: WGS 1984 Web Mercator Auxiliary Sphere  
Datum: WGS 1984

# Zoning: A-3 Heavy Agricultural District



## Map Legend

- Assessment Parcels
- Planning**
- Zoning**
- ZONE\_OVER**
- A-2 (General Agriculture)
- A-2 -X (Railroad Corridor
- Combining District)
- A-3 (Heavy Agriculture)
- A-3 -X (Railroad Corridor
- Combining District)
- Unincorporated
- City Limits
- Board of Supervisors' Districts

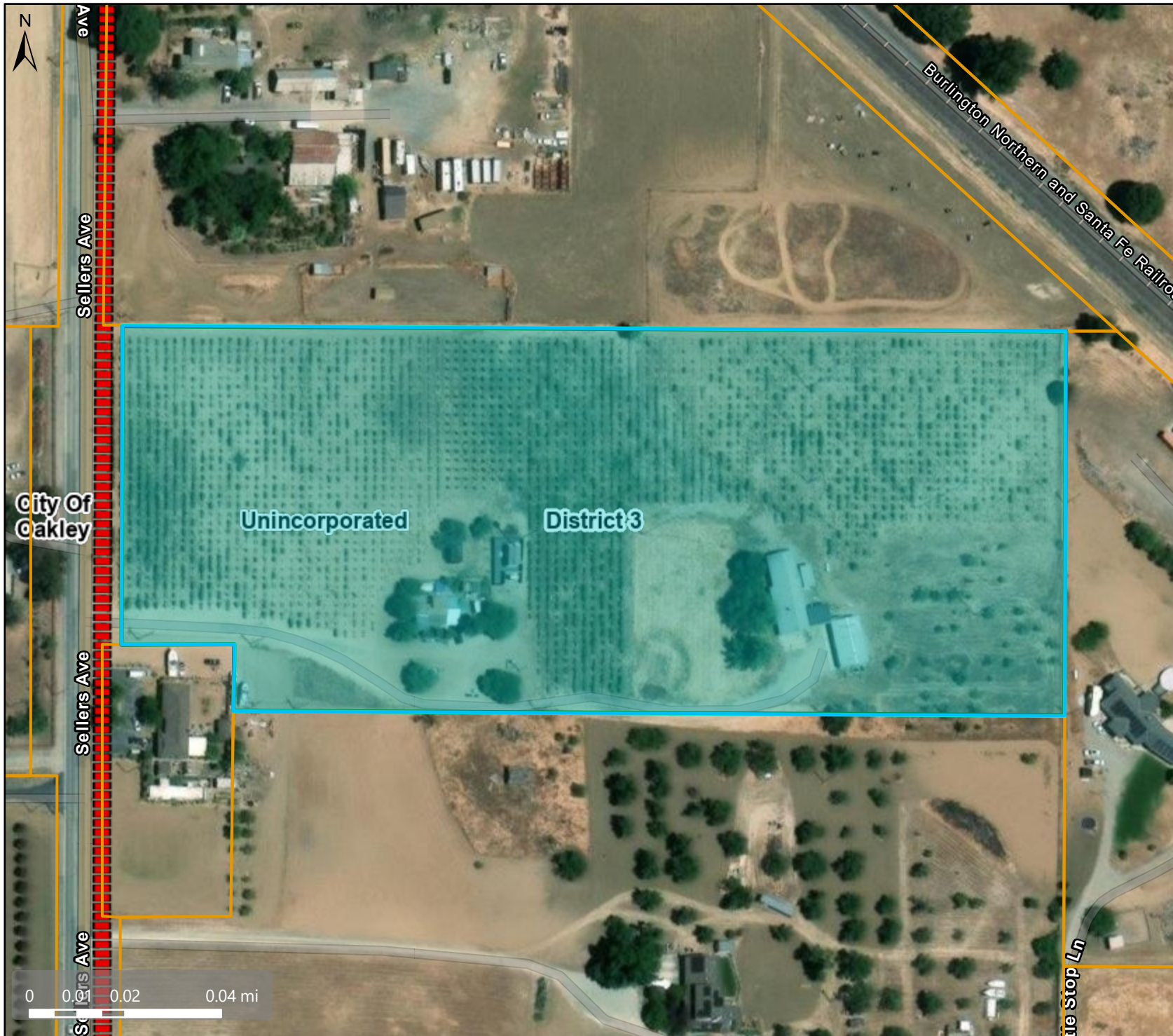
This map is a user generated, static output from an internet mapping application and is intended for reference use only. Data layers that appear on this map may or may not be accurate, current, or otherwise reliable.

**THIS MAP IS NOT TO BE USED FOR NAVIGATION.**

CCMap is maintained by Contra Costa County Department of Information Technology, County GIS. Data layers contained within the CCMap application are provided by various Contra Costa County Departments. Please direct all data inquiries to the appropriate department.

**Spatial Reference**  
 PCS: WGS 1984 Web Mercator Auxiliary Sphere  
 Datum: WGS 1984

# Aerial



## Map Legend

- Assessment Parcels
- Unincorporated
- City Limits
- Board of Supervisors' Districts

This map is a user generated, static output from an internet mapping application and is intended for reference use only. Data layers that appear on this map may or may not be accurate, current, or otherwise reliable.

THIS MAP IS NOT TO BE USED FOR NAVIGATION.

CCMap is maintained by Contra Costa County Department of Information Technology, County GIS. Data layers contained within the CCMap application are provided by various Contra Costa County Departments. Please direct all data inquires to the appropriate department.

Spatial Reference  
PCS: WGS 1984 Web Mercator Auxiliary Sphere  
Datum: WGS 1984