

LOTS 25, 45 & 46 & SPECIFIC TRACT G RO EL SOBRANTE

A- TRACT 6465 MB 302-37

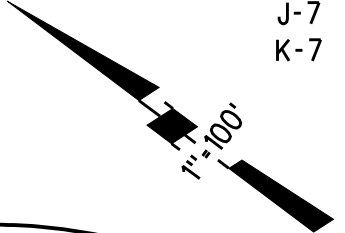
1- 27LSM30 5/6/64

2- 53PM26 3-31-77

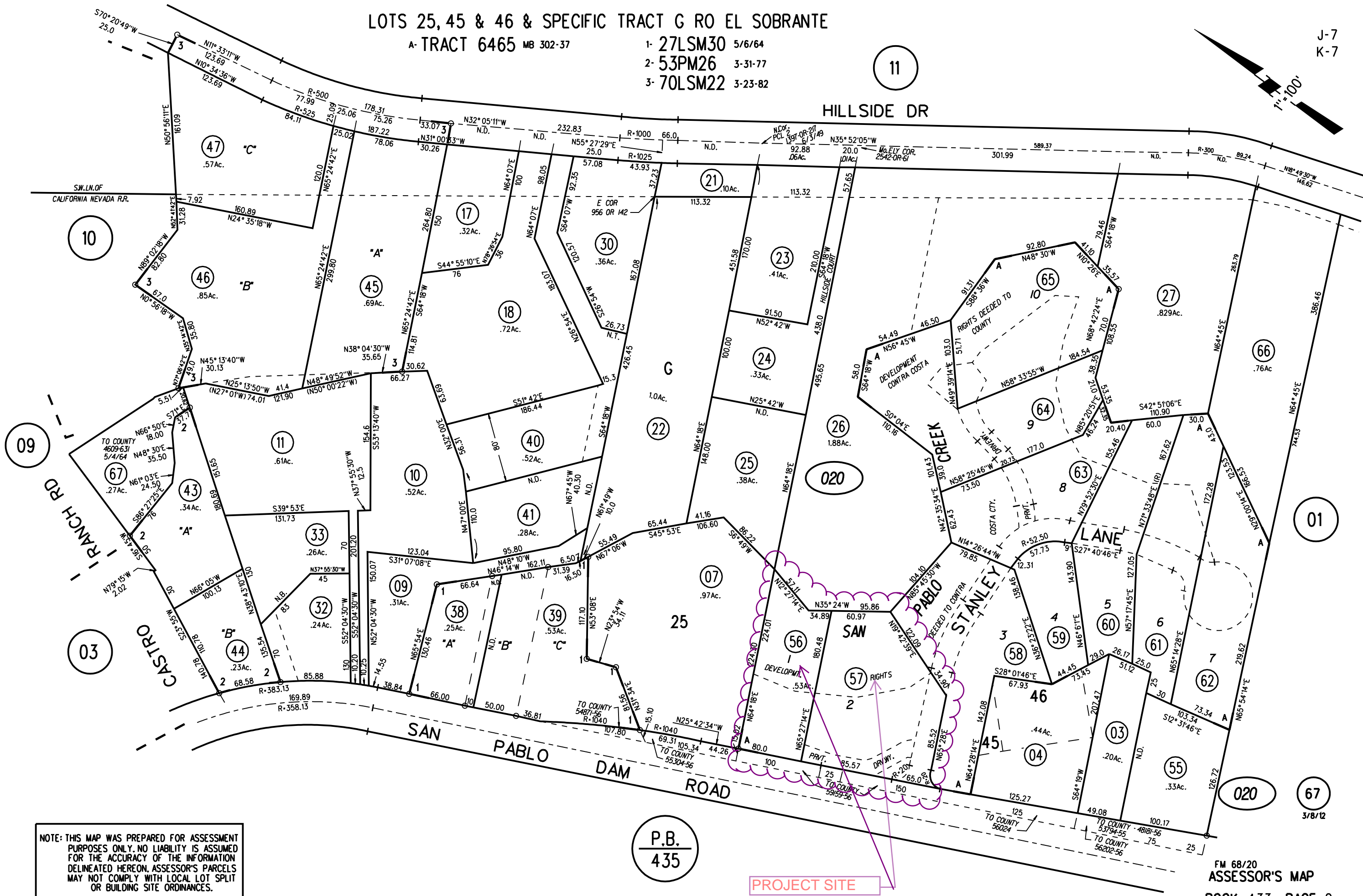
3- 70LSM22 3-23-82

11

J-7  
K-7



HILLSIDE DR



NOTE: THIS MAP WAS PREPARED FOR ASSESSMENT PURPOSES ONLY. NO LIABILITY IS ASSUMED FOR THE ACCURACY OF THE INFORMATION DELINEATED HEREON. ASSESSOR'S PARCELS MAY NOT COMPLY WITH LOCAL LOT SPLIT OR BUILDING SITE ORDINANCES.

P.B.  
435

PROJECT SITE



# General Plan: Single-Family Medium Density (SM) / Open Space (OS)



## Map Legend

- Assessment Parcels
- General Plan**
- SM (Single Family Residential - Medium) 3.0 - 4.9 Units per Net Acre
- OS (Open Space)
- Unincorporated
- City Limits
- Board of Supervisors' Districts
- Address Points



This map is a user generated, static output from an internet mapping application and is intended for reference use only. Data layers that appear on this map may or may not be accurate, current, or otherwise reliable. THIS MAP IS NOT TO BE USED FOR NAVIGATION. CCMap is maintained by Contra Costa County Department of Information Technology, County GIS. Data layers contained within the CCMap application are provided by various Contra Costa County Departments. Please direct all data inquires to the appropriate department.

Spatial Reference  
 PCS: WGS 1984 Web Mercator Auxiliary Sphere  
 Datum: WGS 1984



# Zoning - Planned Unit (P-1) Zoning District



## Map Legend

- Assessment Parcels
- Zoning**
- ZONE\_OVER**
- R-10 (Single Family Residential)
- P-1 (Planned Unit)
- Unincorporated
- City Limits
- Board of Supervisors' Districts
- Address Points

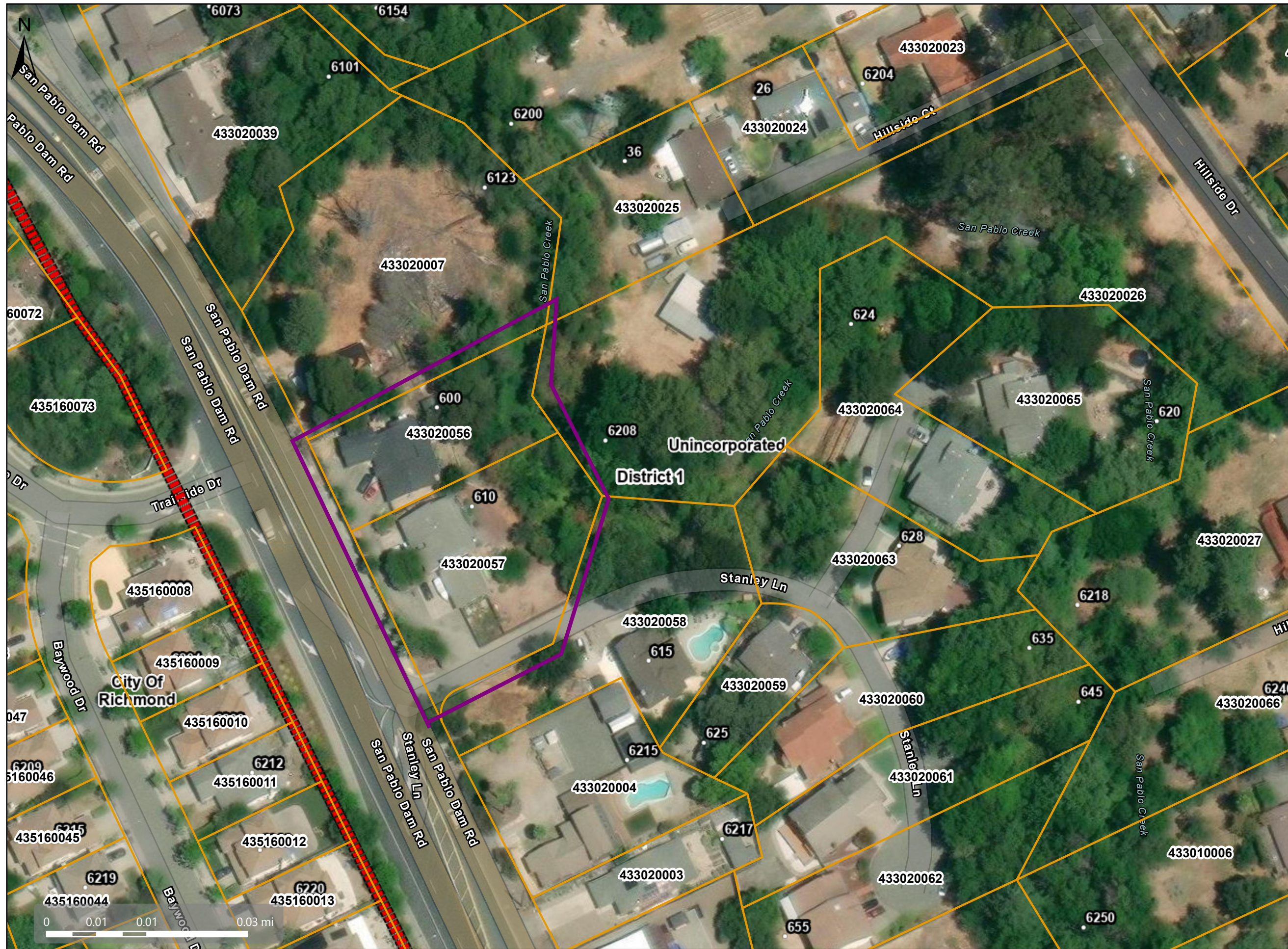


This map is a user generated, static output from an internet mapping application and is intended for reference use only. Data layers that appear on this map may or may not be accurate, current, or otherwise reliable. THIS MAP IS NOT TO BE USED FOR NAVIGATION. CCMMap is maintained by Contra Costa County Department of Information Technology, County GIS. Data layers contained within the CCMMap application are provided by various Contra Costa County Departments. Please direct all data inquires to the appropriate department.






Spatial Reference  
 PCS: WGS 1984 Web Mercator Auxiliary Sphere  
 Datum: WGS 1984



# Orthophotography



## Map Legend

-  Assessment Parcels
-  Unincorporated
-  City Limits
-  Board of Supervisors' Districts
-  Address Points



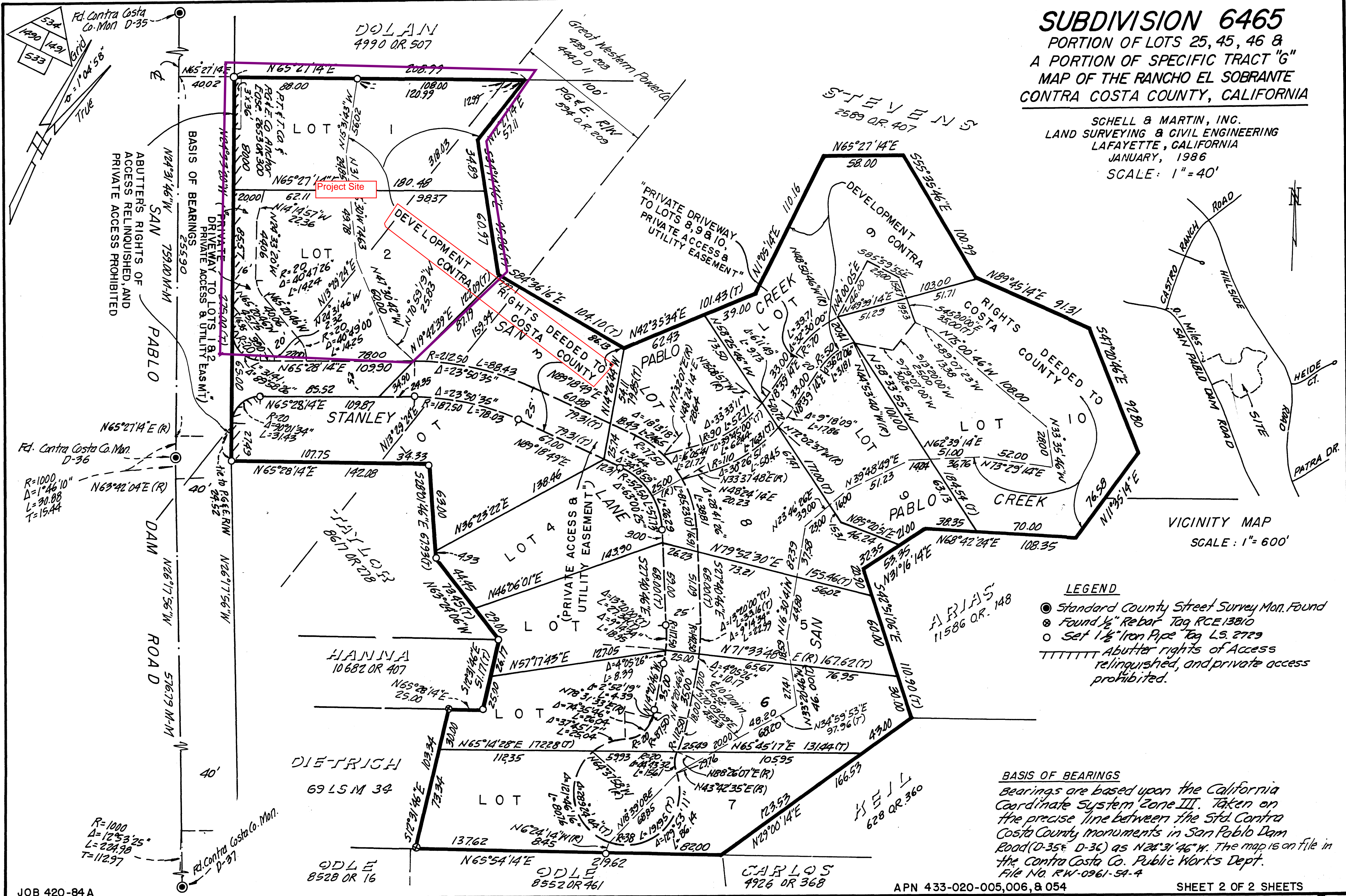
This map is a user generated, static output from an internet mapping application and is intended for reference use only. Data layers that appear on this map may or may not be accurate, current, or otherwise reliable. THIS MAP IS NOT TO BE USED FOR NAVIGATION. CCMMap is maintained by Contra Costa County Department of Information Technology, County GIS. Data layers contained within the CCMMap application are provided by various Contra Costa County Departments. Please direct all data inquiries to the appropriate department. Spatial Reference PCS: WGS 1984 Web Mercator Auxiliary Sphere Datum: WGS 1984

# SUBDIVISION 6465

PORTION OF LOTS 25, 45, 46 &  
A PORTION OF SPECIFIC TRACT "G"  
MAP OF THE RANCHO EL SOBRANTE  
CONTRA COSTA COUNTY, CALIFORNIA

SCHELL & MARTIN, INC.  
LAND SURVEYING & CIVIL ENGINEERING  
LAFAYETTE, CALIFORNIA  
JANUARY, 1986  
SCALE: 1" = 40'

302 M 33



VICINITY MAP  
SCALE: 1" = 600'

- LEGEND**
- Standard County Street Survey Mon. Found
  - ⊙ Found 1/2" Rebar Tag RCE 13810
  - Set 1 1/2" Iron Pipe Tag LS 2729
  - Abutter rights of Access relinquished, and private access prohibited.

**BASIS OF BEARINGS**  
Bearings are based upon the California Coordinate System Zone III. Taken on the precise line between the Std. Contra Costa County monuments in San Pablo Dam Road (D-35 & D-36) as N24°31'46"W. The map is on file in the Contra Costa Co. Public Works Dept. File No. RW-0961-54-4