

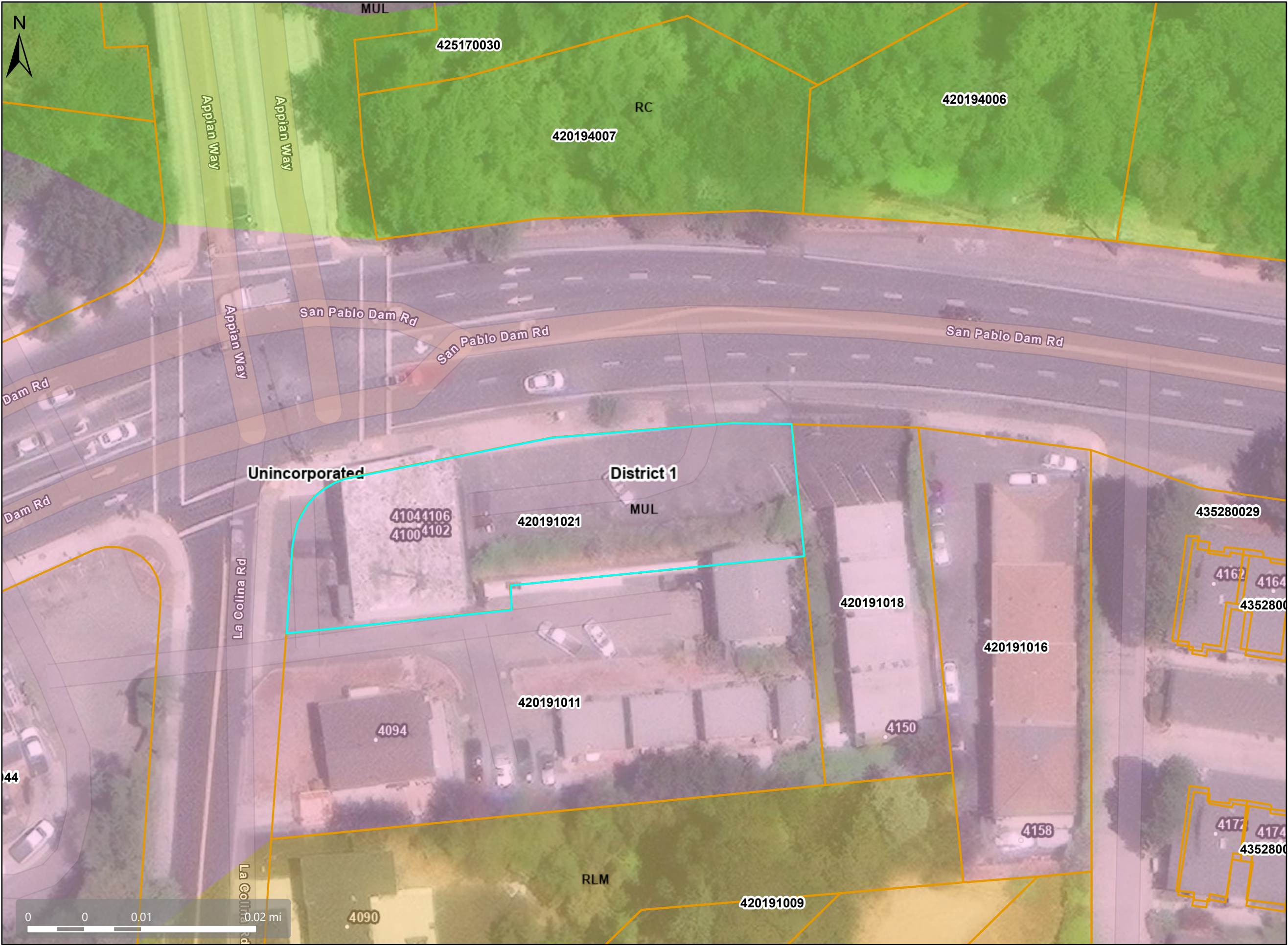
**Map Legend**

- County Border
- Assessment Parcels
- Unincorporated Board of Supervisors' Districts
- Address Points

This map is a user generated, static output from an internet mapping application and is intended for reference use only. Data layers that appear on this map may or may not be accurate, current, or otherwise reliable. THIS MAP IS NOT TO BE USED FOR NAVIGATION. CCMap is maintained by Contra Costa County Department of Information Technology, County GIS. Data layers contained within the CCMap application are provided by various Contra Costa County Departments. Please direct all data inquiries to the appropriate department. Spatial Reference: PCS: WGS 1984 Web Mercator Auxiliary Sphere Datum: WGS 1984



General Plan - MUL



Map Legend

- County Border
- Assessment Parcels
- General Plan
  - RLM (Residential Low-Medium Density) (3-7 du/na)
  - MUL (Mixed-Use Low) (10-30 du/na) (1.0 FAR)
  - RC (Resource Conservation)
  - Unincorporated
- Board of Supervisors' Districts
- Address Points

This map is a user generated, static output from an internet mapping application and is intended for reference use only.  
Data layers that appear on this map may or may not be accurate, current, or otherwise reliable.  
THIS MAP IS NOT TO BE USED FOR NAVIGATION.  
CCMap is maintained by Contra Costa County Department of Information Technology, County GIS.  
Data layers contained within the CCMap application are provided by various Contra Costa County Departments.  
Please direct all data inquiries to the appropriate department.  
Spatial Reference  
PCS: WGS 1984 Web Mercator Auxiliary Sphere  
Datum: WGS 1984



A- SANTA RITA ACRES UNIT NO. 1 MB 22-645

B- LA COLINA MB 25-805

SAN PABLO RANCHO

P.B.  
425

1"=100'

NOTE: THIS MAP WAS PREPARED FOR ASSESSMENT PURPOSES ONLY. NO LIABILITY IS ASSUMED FOR THE ACCURACY OF THE INFORMATION DELINEATED HEREON. ASSESSOR'S PARCELS MAY NOT COMPLY WITH LOCAL LOT SPLIT OR BUILDING SITE ORDINANCES.

SAN PABLO DAM ROAD

APPIAN WAY

LA COLINA

ROAD

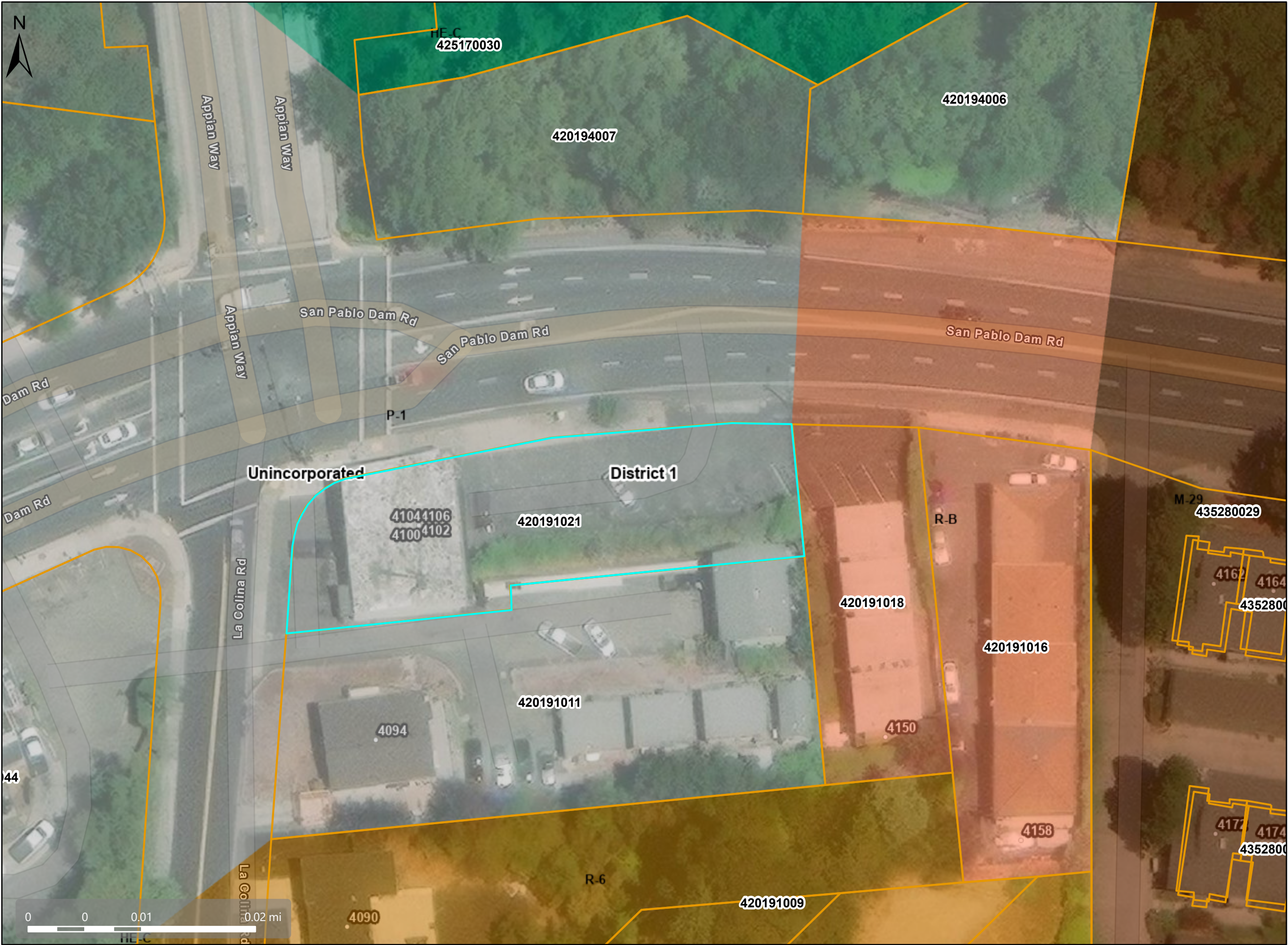
P.B.  
435

191  
192  
193  
194  
21  
51  
09-12  
12/17/15

FM 3/59  
ASSESSOR'S MAP  
BOOK 420 PAGE 19  
CONTRA COSTA COUNTY,CALIF.



Zoning - P-1



Map Legend

County Border

Assessment  
Parcels

Zoning

ZONE\_OVER

R-6 (Single  
Family  
Residential)

M-29 (Multiple  
Family  
Residential)

R-B (Retail  
Business)

P-1 (Planned  
Unit)

HE-C (Housing  
Element  
Consistency)

Unincorporated  
Board of  
Supervisors'  
Districts

Address Points

This map is a user generated, static output from an internet mapping application and is intended for reference use only.  
Data layers that appear on this map may or may not be accurate, current, or otherwise reliable.  
THIS MAP IS NOT TO BE USED FOR NAVIGATION.  
CCMap is maintained by Contra Costa County Department of Information Technology, County GIS.  
Data layers contained within the CCMap application are provided by various Contra Costa County Departments.  
Please direct all data inquiries to the appropriate department.

Spatial Reference  
PCS: WGS 1984 Web Mercator Auxiliary Sphere  
Datum: WGS 1984