

9/11/2025

Central Contra Costa Sanitary District

Household Hazardous Waste (HHW)

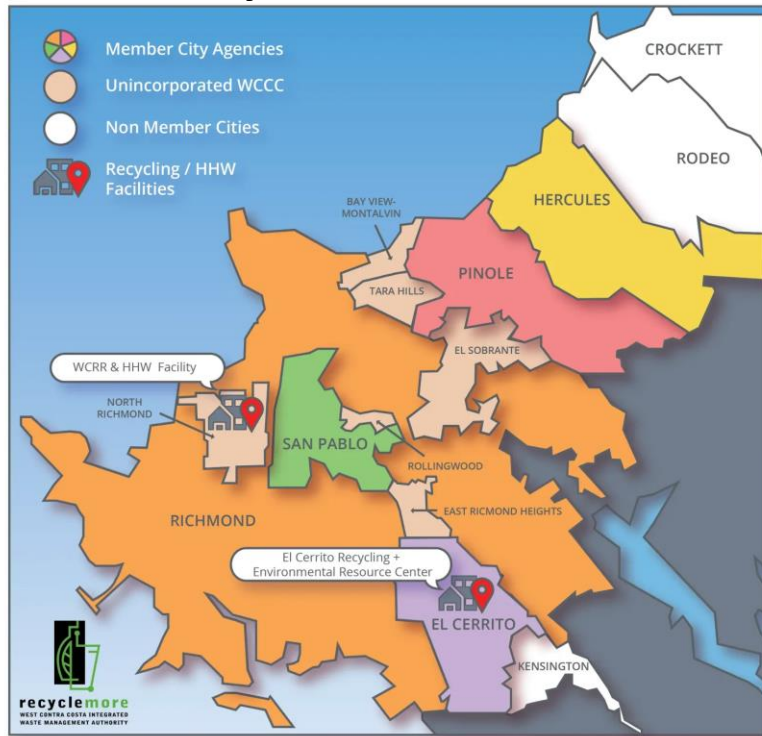
Geoff Niswander

Senior HHW Technician



Contra Costa HHW Programs

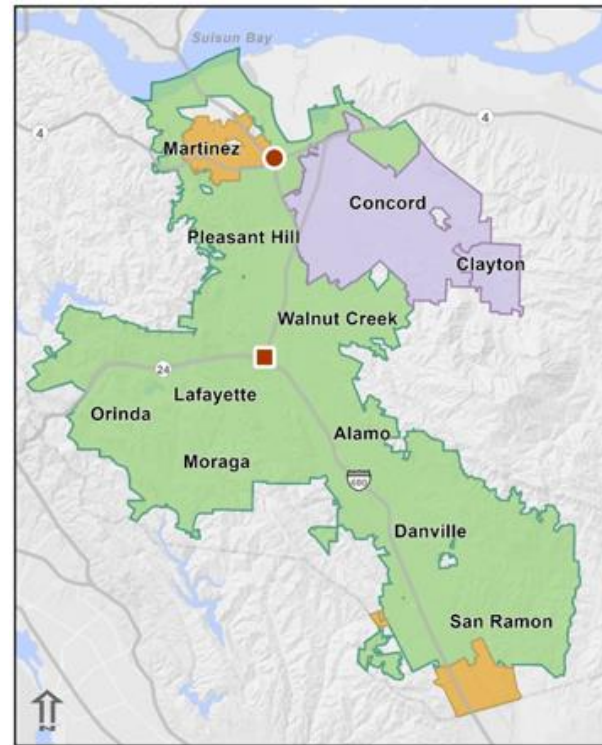
West County



RecycleMore

www.recyclemore.com/hazardous-waste/

Central County



Central San

[www.centralsan.org/hhw](http://www centralsan.org/hhw)

East County

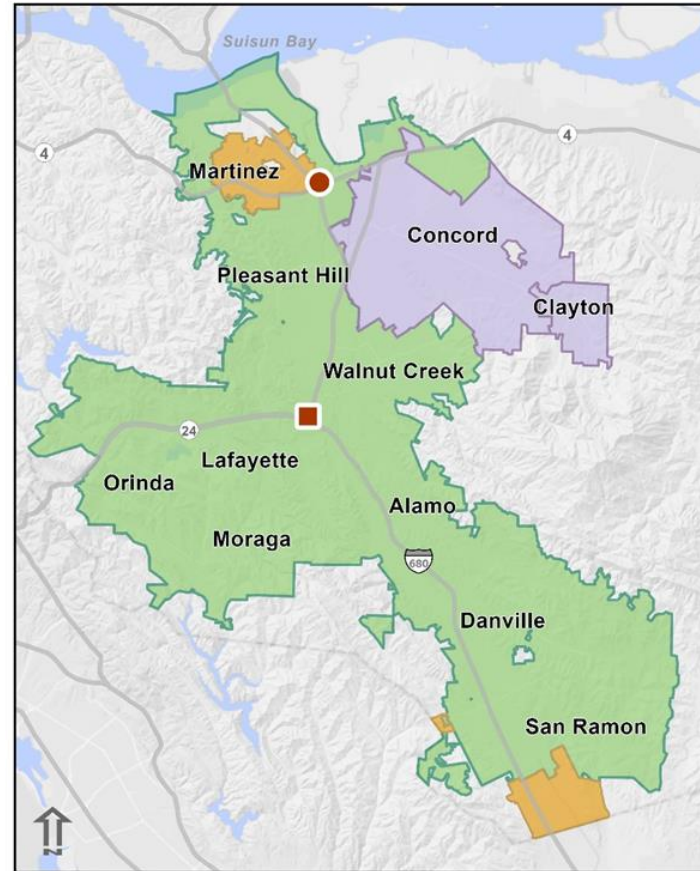


Delta Diablo HHW

www.deltadiablo.specialdistrict.org/household-hazardous-waste

Who Are We?

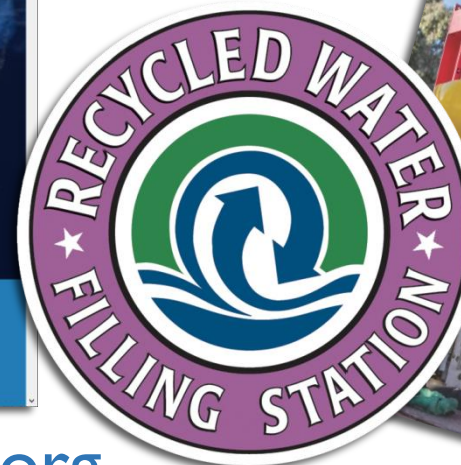
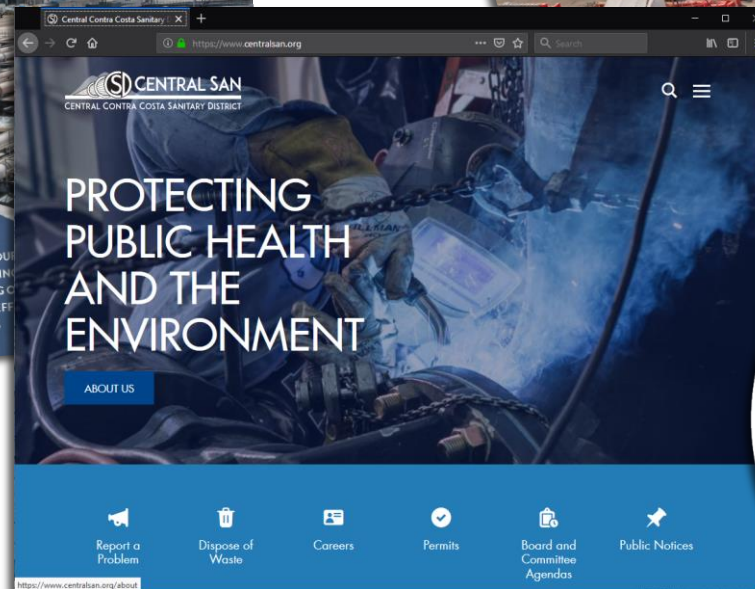
- Wastewater treatment
- ~1400 Miles of pipe
- ~199,700 Households
- ~32,000 HHW customers per year
- >52 Million Pounds of Waste
 - Since opening in 1997



Central San serves nearly 500,000 customers

- Sewage collection and wastewater treatment; Household Hazardous Waste (HHW) disposal for 485,040 people. These services are provided over a 145-square-mile area.
- Wastewater treatment & HHW disposal for 133,393 residents in Concord and Clayton by contract. These services are provided over a 30-square-mile area.
- HHW disposal only. These services are provided over a 9-square-mile area.
- Central San headquarters, treatment plant, HHW Facility and Residential Recycled Water Fill Station.
- Collection System Operations headquarters.

CENTRALSAN.ORG



webmail@centralsan.org

No Wipes Down Pipes



What is Household Hazardous Waste (HHW)???

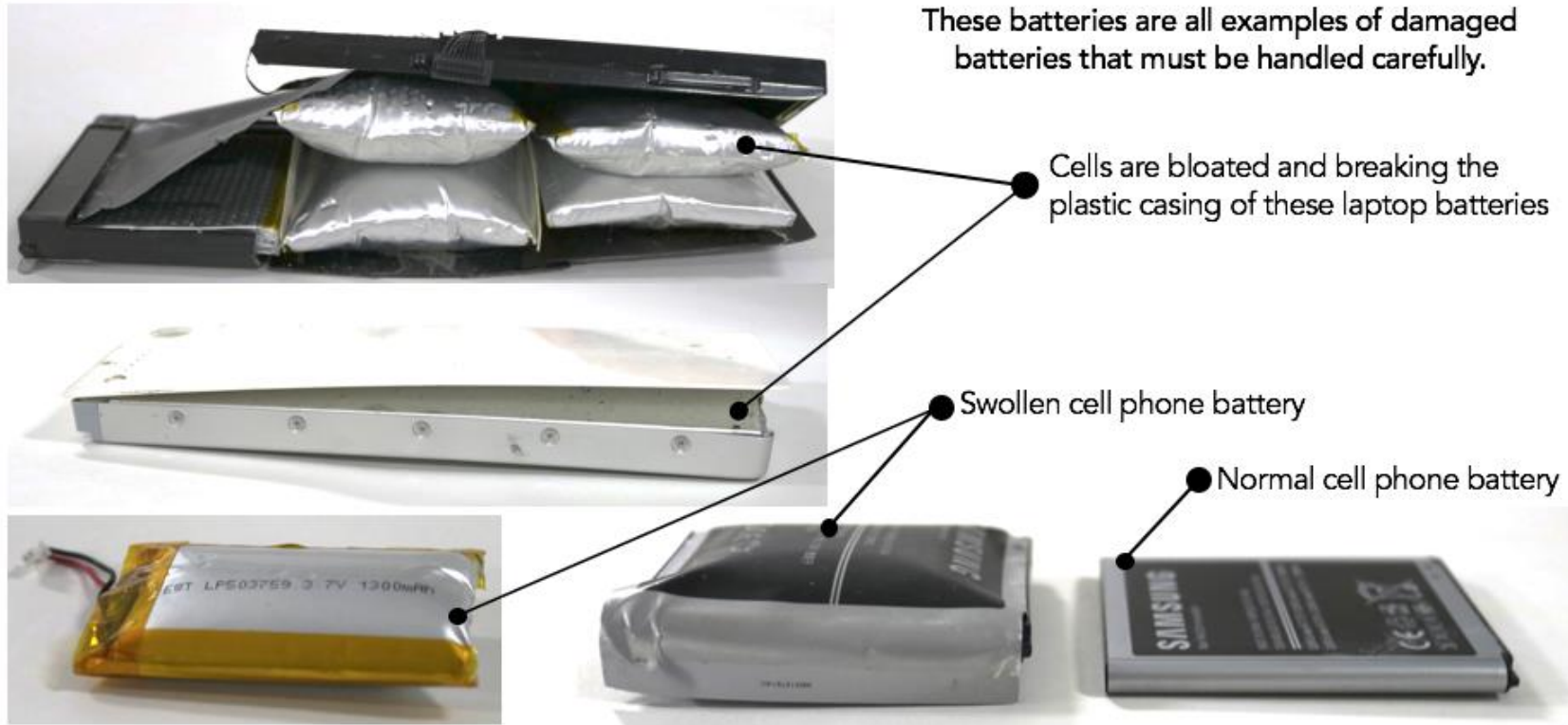
- Paint and related materials
- Lightbulbs
- Batteries
- Lawn/Garden Products
- Automotive Products
- Cleaning Products
- Personal Care Items (Not Pharmaceuticals/Sharps)



Let's talk about batteries!!



Damaged, Defective, or Recalled Batteries (DDR)



How to Safely Handle and Dispose of DDR Batteries

- DO NOT puncture the battery
- Do not use the device or battery
- Do not expose to water or liquids
- Tape battery terminals
- Place into a metal container. DO NOT seal the container
- Cover the battery with DRY and clean sand, dirt, or kitty litter.
- Secure the metal container in your vehicle (preferably in a truck bed or trunk) to prevent tipping or impact
- Bring <300Wh batteries to the HHW facility

Pharmaceuticals and Sharps

- Use FREE collection programs
 - [Medproject.org](https://www.medproject.org)
 - Located at most retail and Kaiser pharmacies
 - Mail-back option also available
 - [Sharpstakebackcalifornia.org](https://www.sharpstakebackcalifornia.org)
 - Mail-back only
 - Sharps containers and all postage included and FREE
 - Up to three containers per order



MED-Project[®]
Medication Education & Disposal



Residential Recycled Water Fill Station

- Co-Located with HHW Facility
- For use on landscaping and gardens **ONLY**
- Residents can take up to 300 gallons per visit
- Learn more at:
<https://www centralsan.org/post/residential-recycled-water-fill-station>



Thank you!!

Contact Info

[www.centralsan.org/HHW](http://www centralsan.org/HHW)

Residential HHW: (800) 646-1431 or HHWINFO@centralsan.org

Small Business Hazardous Waste: (800) 646-1431 Option 5 or CESQG@centralsan.org

Residential Recycled Water: (925) 335-7717 or RESIDENTIAL@centralsan.org

