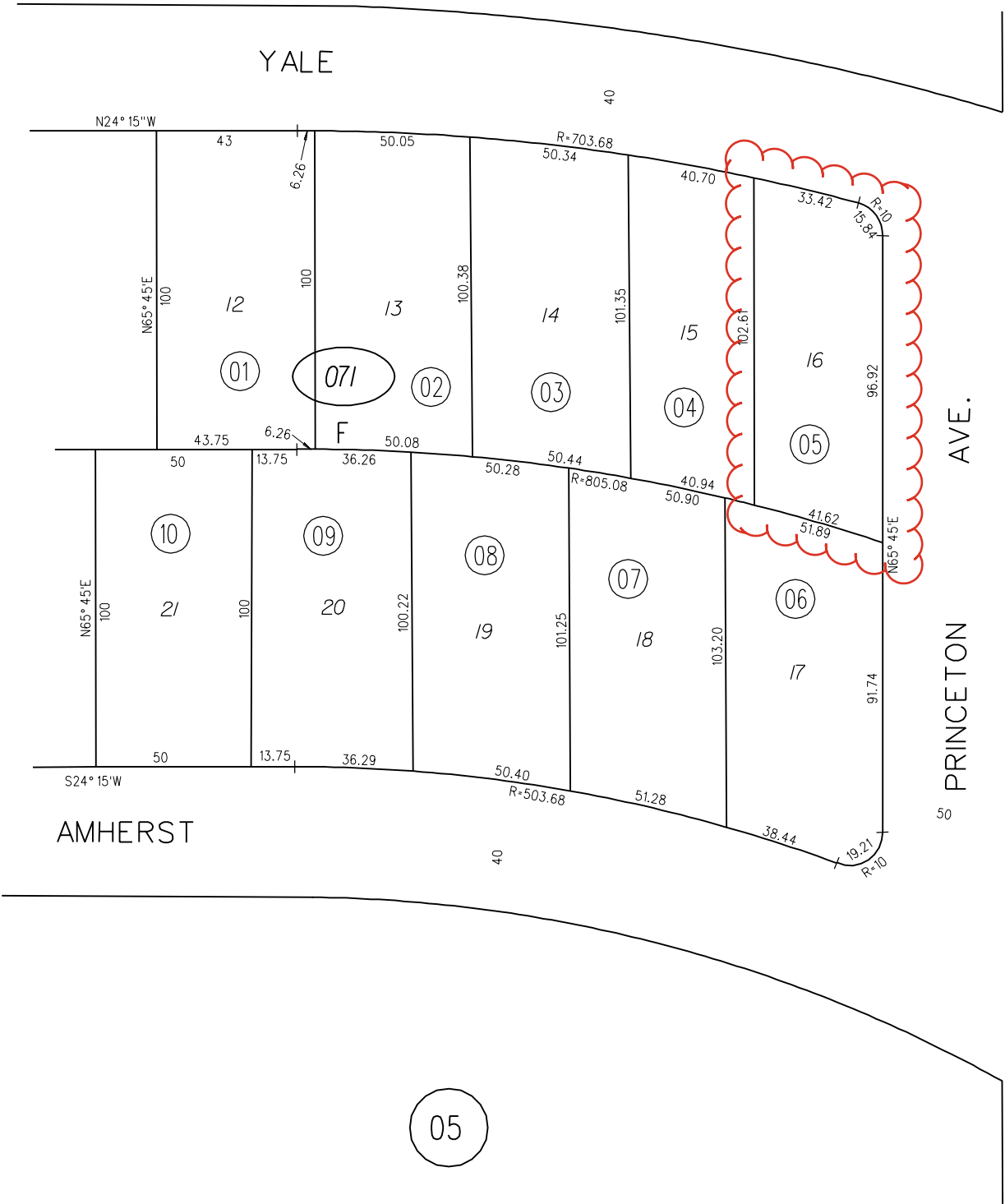
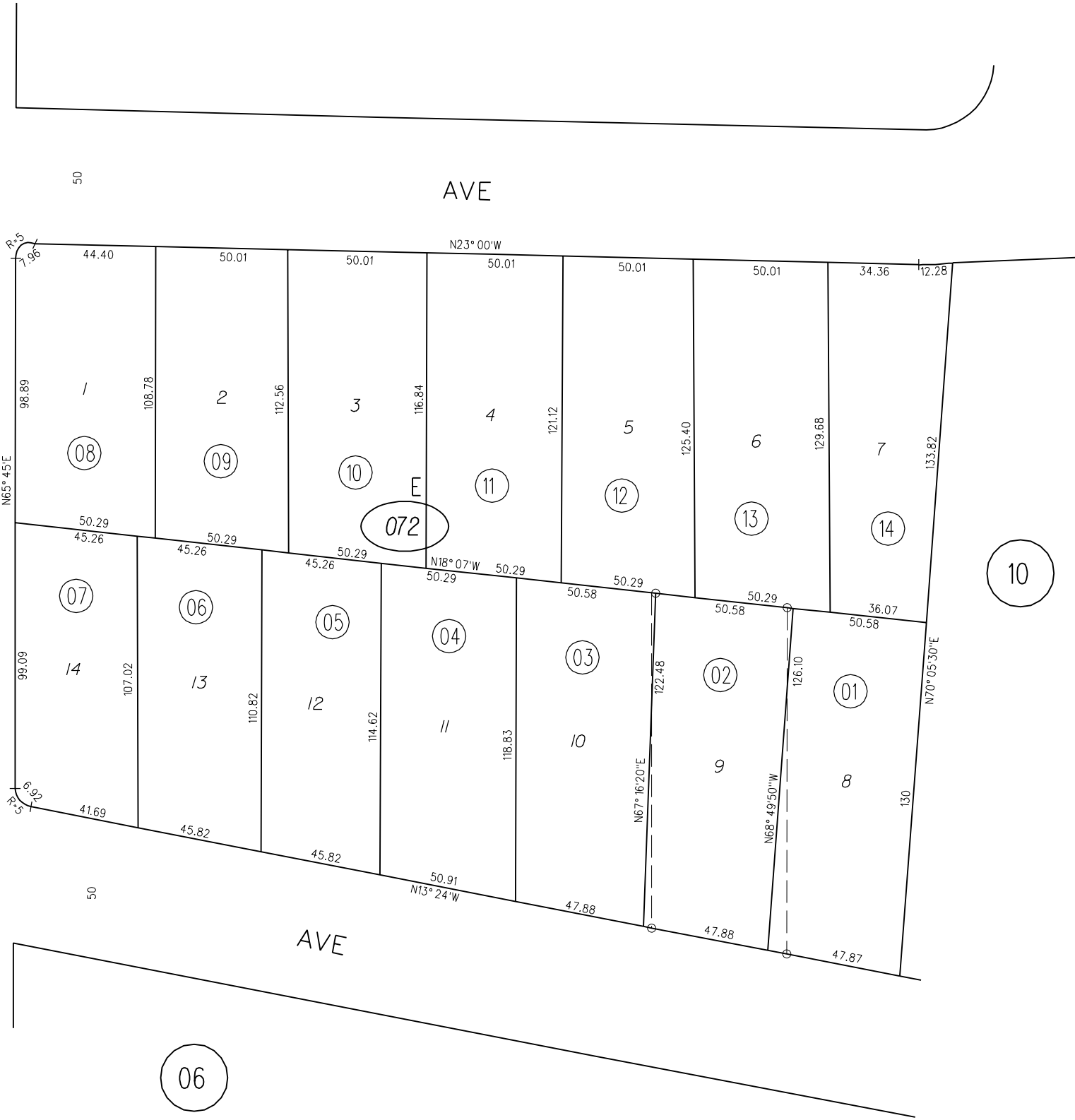


04



08



10

05

06

071

072

Aerial



Map Legend

- County Border
- Assessment
Parcels

Planning Layers (DCD)

- Unincorporated
- Board of
Supervisors'
Districts

Base Data

- Address Points

This map is a user generated, static output from an internet mapping application and is intended for reference use only. Data layers that appear on this map may or may not be accurate, current, or otherwise reliable.

THIS MAP IS NOT TO BE USED FOR NAVIGATION.

CCMap is maintained by Contra Costa County Department of Information Technology, County GIS. Data layers contained within the CCMap application are provided by various Contra Costa County Departments. Please direct all data inquiries to the appropriate department.

Spatial Reference
PCS: WGS 1984 Web Mercator Auxiliary Sphere
Datum: WGS 1984

Zoning - R-6, -TOV, -K



Map Legend

County Border

Assessment
Parcels

Planning Layers
(DCD)

Zoning

ZONE_OVER

R-6 -TOV -K

(Tree
Obstruction and
Kensington)

Unincorporated

Board of
Supervisors'
Districts

Base Data

Address Points

This map is a user generated, static output from an internet mapping application and is intended for reference use only. Data layers that appear on this map may or may not be accurate, current, or otherwise reliable.
THIS MAP IS NOT TO BE USED FOR NAVIGATION.
CCMap is maintained by Contra Costa County Department of Information Technology, County GIS. Data layers contained within the CCMap application are provided by various Contra Costa County Departments. Please direct all data inquiries to the appropriate department.

Spatial Reference
PCS: WGS 1984 Web Mercator Auxiliary Sphere
Datum: WGS 1984



Map Legend

- County Border
- Assessment
Parcels

Planning Layers (DCD)

General Plan

- RM (Residential
Medium
Density) (7-17
du/na)

Unincorporated

- Board of
Supervisors'
Districts

Base Data

- Address Points

This map is a user generated, static output from an internet mapping application and is intended for reference use only. Data layers that appear on this map may or may not be accurate, current, or otherwise reliable.

THIS MAP IS NOT TO BE USED FOR NAVIGATION.

CCMap is maintained by Contra Costa County Department of Information Technology, County GIS. Data layers contained within the CCMap application are provided by various Contra Costa County Departments. Please direct all data inquiries to the appropriate department.

Spatial Reference
PCS: WGS 1984 Web Mercator Auxiliary Sphere
Datum: WGS 1984