

PB  
420



**CDVR24-01044  
PROJECT SITE**

NOTE: THIS MAP WAS PREPARED FOR ASSESSMENT PURPOSES ONLY. NO LIABILITY IS ASSUMED FOR THE ACCURACY OF THE INFORMATION DELINEATED HEREON. ASSESSOR'S PARCELS MAY NOT COMPLY WITH LOCAL LOT SPLIT OR BUILDING SITE ORDINANCES.

# Aerial Photo - Project Site and Vicinity



### Map Legend

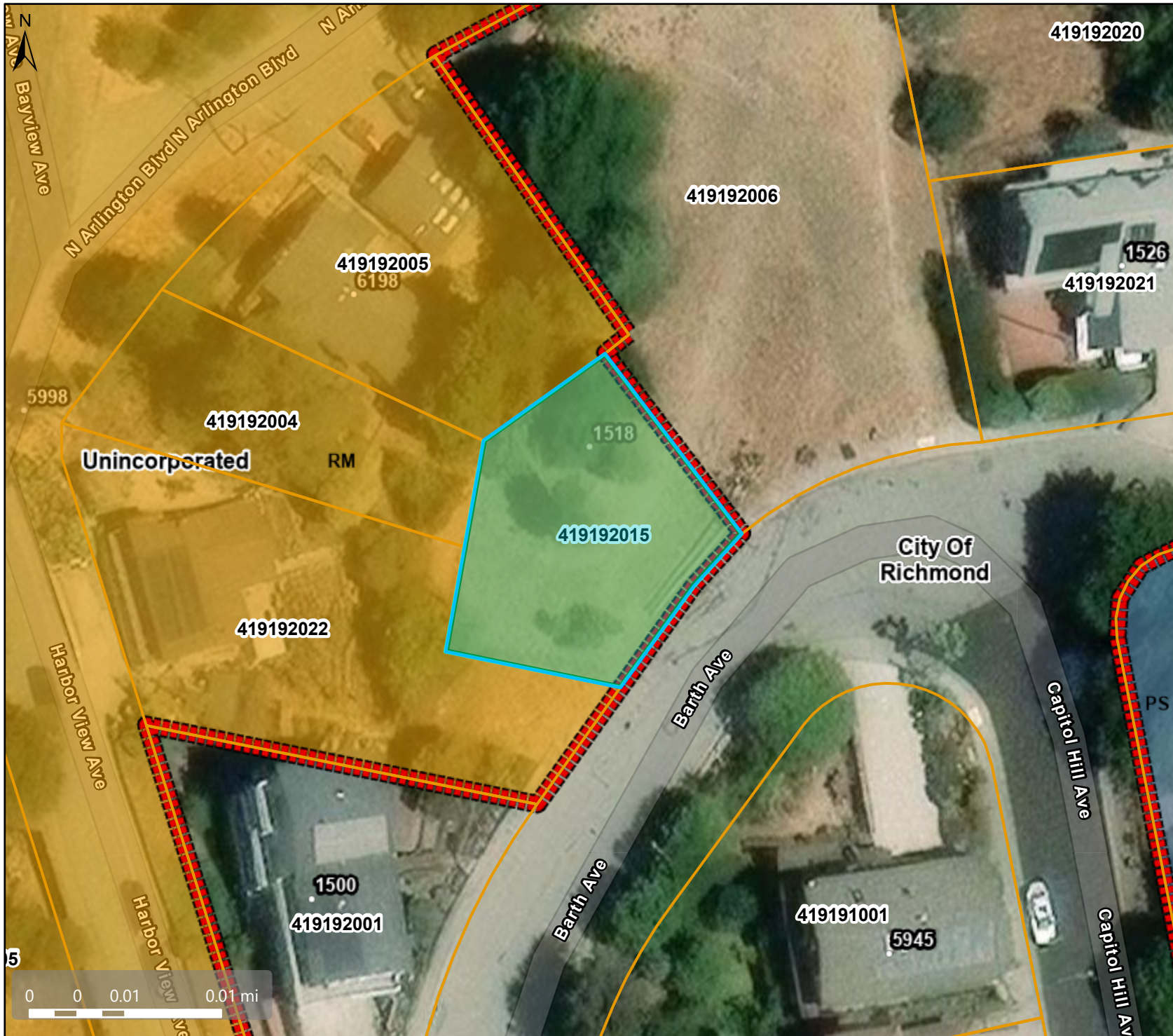
- Assessment Parcels
- City Limits
- Unincorporated
- Address Points

This map is a user generated, static output from an internet mapping application and is intended for reference use only. Data layers that appear on this map may or may not be accurate, current, or otherwise reliable.

THIS MAP IS NOT TO BE USED FOR NAVIGATION. CCMAP is maintained by Contra Costa County Department of Information Technology, County GIS. Data layers contained within the CCMAP application are provided by various Contra Costa County Departments. Please direct all data inquiries to the appropriate department.

Spatial Reference  
 PCS: WGS 1984 Web Mercator Auxiliary Sphere  
 Datum: WGS 1984

# General Plan - RM Residential Medium Densit



## Map Legend

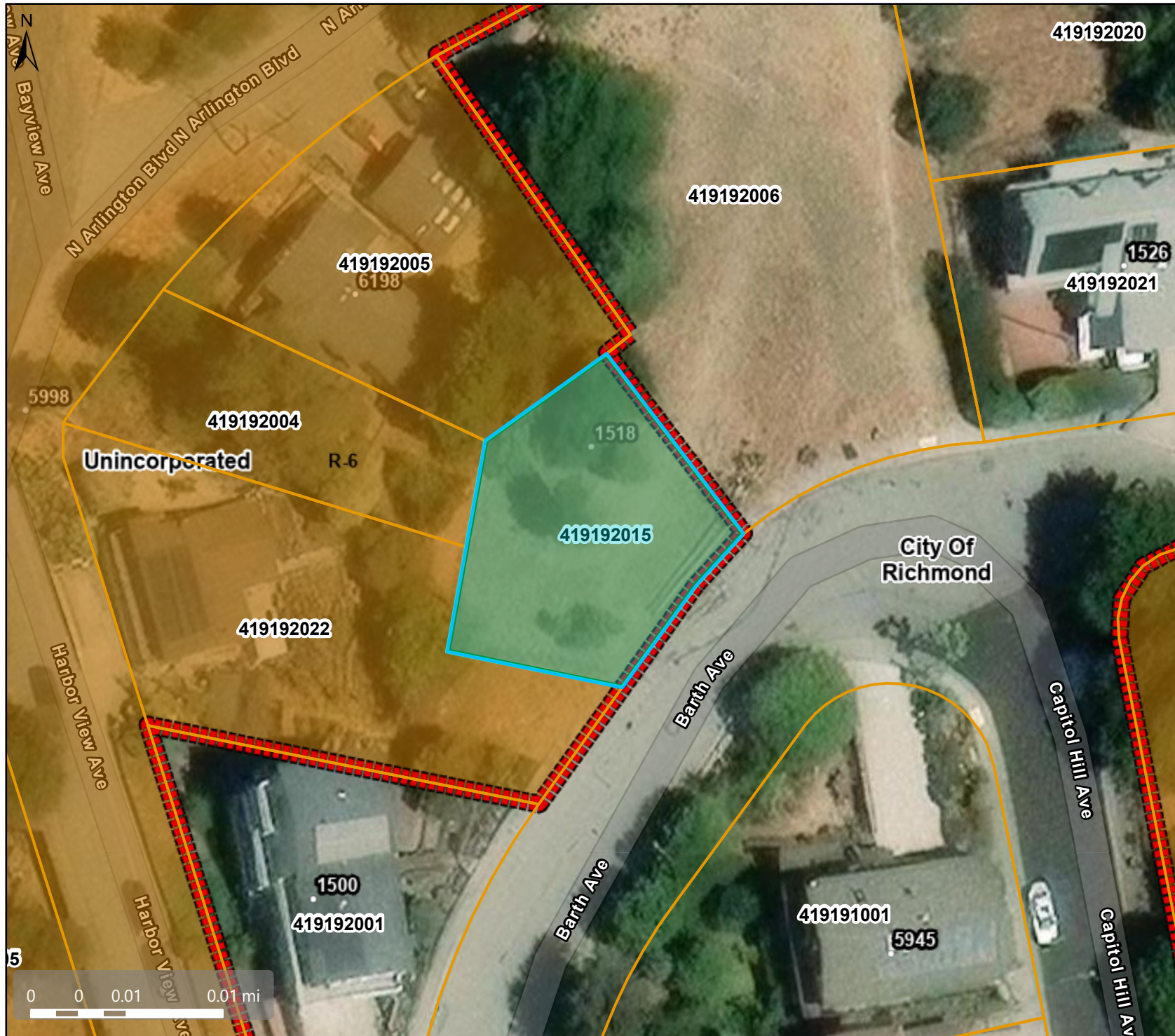
- Assessment Parcels
- Planning**
- General Plan**
- RM (Residential Medium Density) (7-17 du/na)
- PS (Public and Semi-Public)
- Unincorporated
- City Limits
- Base Data**
- Address Points

This map is a user generated, static output from an internet mapping application and is intended for reference use only. Data layers that appear on this map may or may not be accurate, current, or otherwise reliable.

THIS MAP IS NOT TO BE USED FOR NAVIGATION. CCMAP is maintained by Contra Costa County Department of Information Technology, County GIS. Data layers contained within the CCMAP application are provided by various Contra Costa County Departments. Please direct all data inquires to the appropriate department.

Spatial Reference  
 PCS: WGS 1984 Web Mercator Auxiliary Sphere  
 Datum: WGS 1984

# Zoning - R-6 Single-Family Residential



## Map Legend

- Assessment Parcels
- Planning
- Zoning
- ZONE\_OVER
  - R-6 (Single Family Residential)
  - Unincorporated
- City Limits
- Base Data
  - Address Points

This map is a user generated, static output from an internet mapping application and is intended for reference use only. Data layers that appear on this map may or may not be accurate, current, or otherwise reliable.

THIS MAP IS NOT TO BE USED FOR NAVIGATION. CCMAP is maintained by Contra Costa County Department of Information Technology, County GIS. Data layers contained within the CCMAP application are provided by various Contra Costa County Departments. Please direct all data inquiries to the appropriate department.

Spatial Reference  
 PCS: WGS 1984 Web Mercator Auxiliary Sphere  
 Datum: WGS 1984