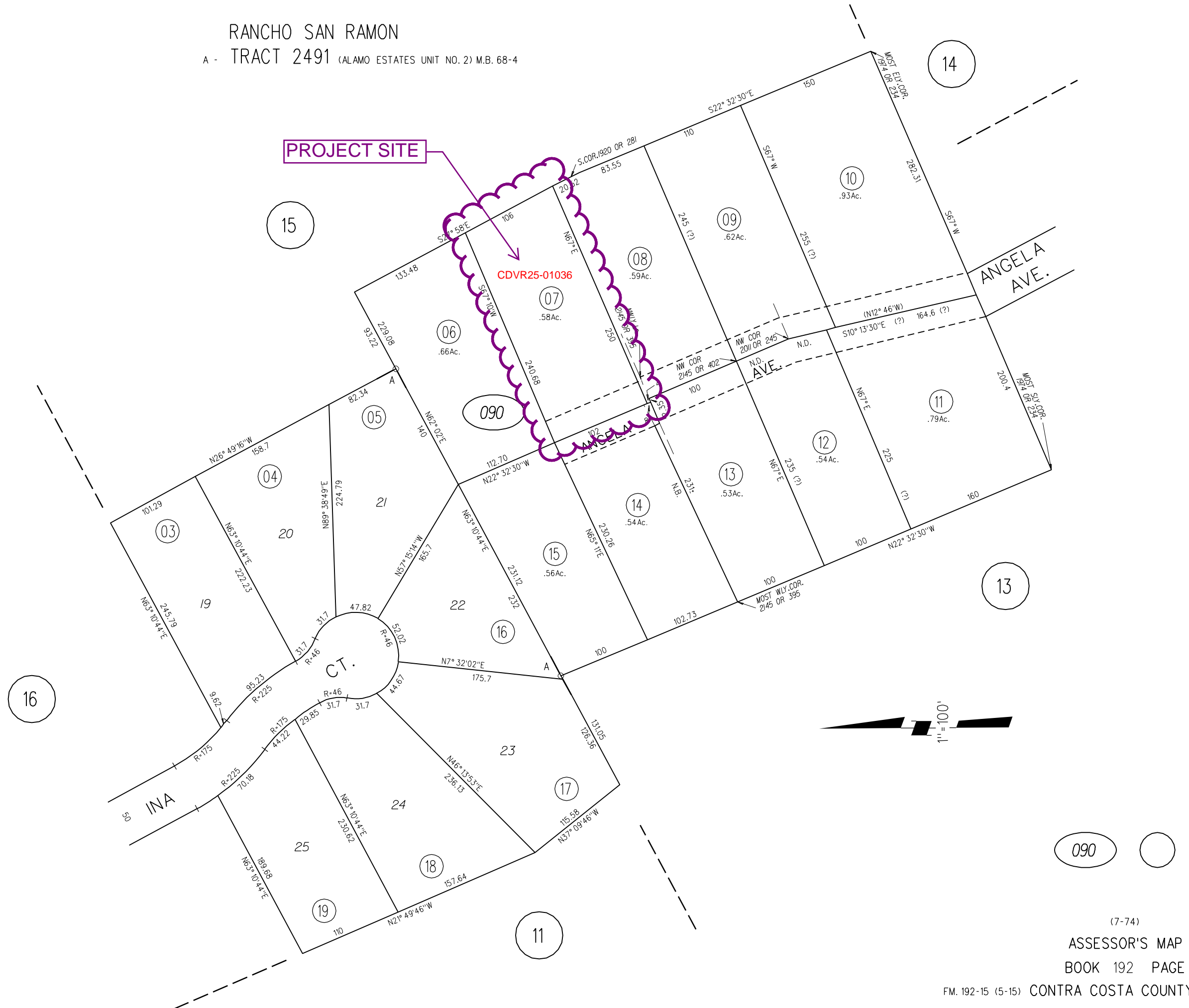
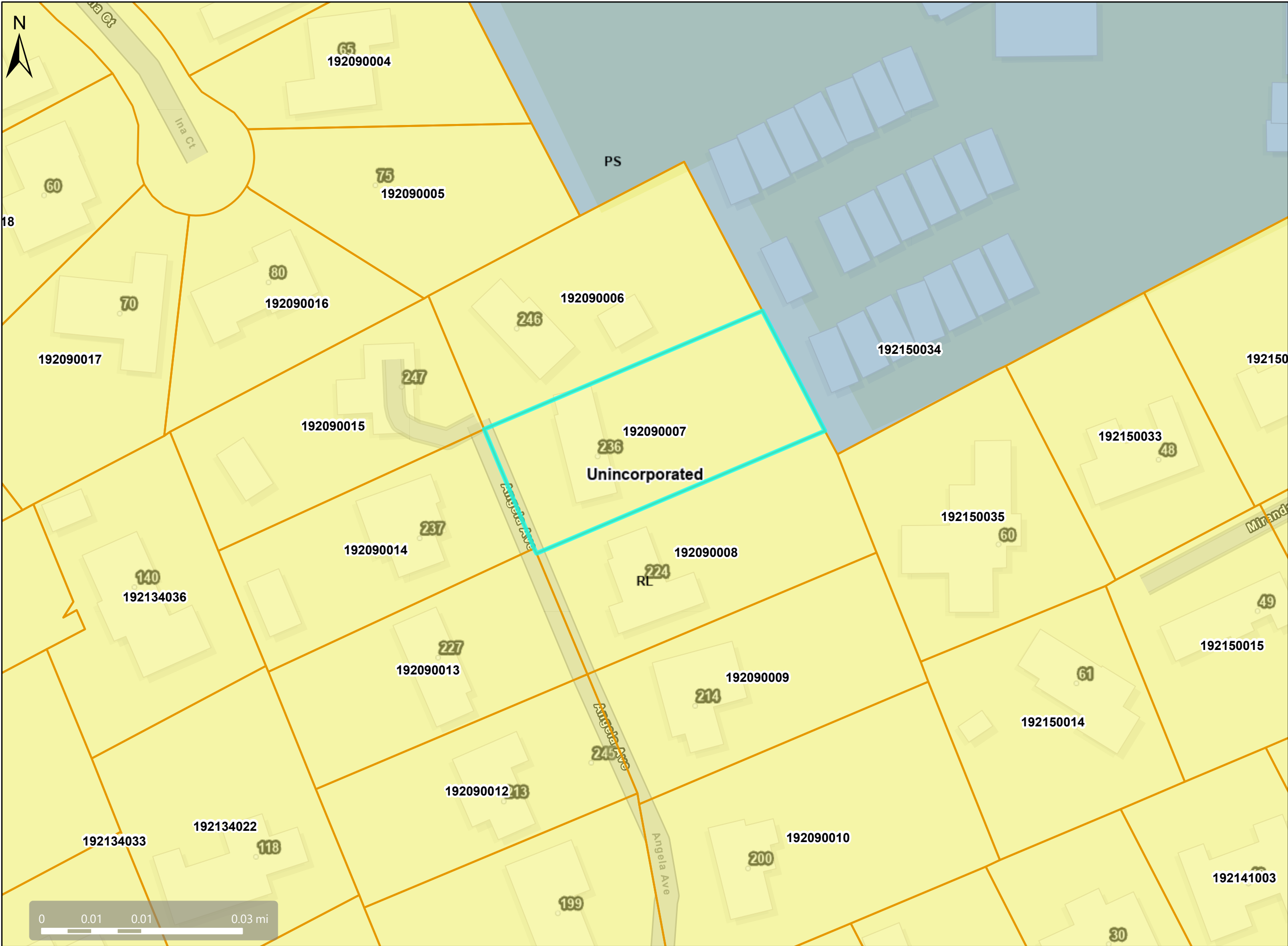


RANCHO SAN RAMON
A - TRACT 2491 (ALAMO ESTATES UNIT NO. 2) M.B. 68-4



General Plan: RL, Residential Low Density



Map Legend

- Assessment
Parcels
- General Plan
- RL (Residential
Low Density)
(1-3 du/na)
- PS (Public and
Semi-Public)
- Unincorporated
- Address Points

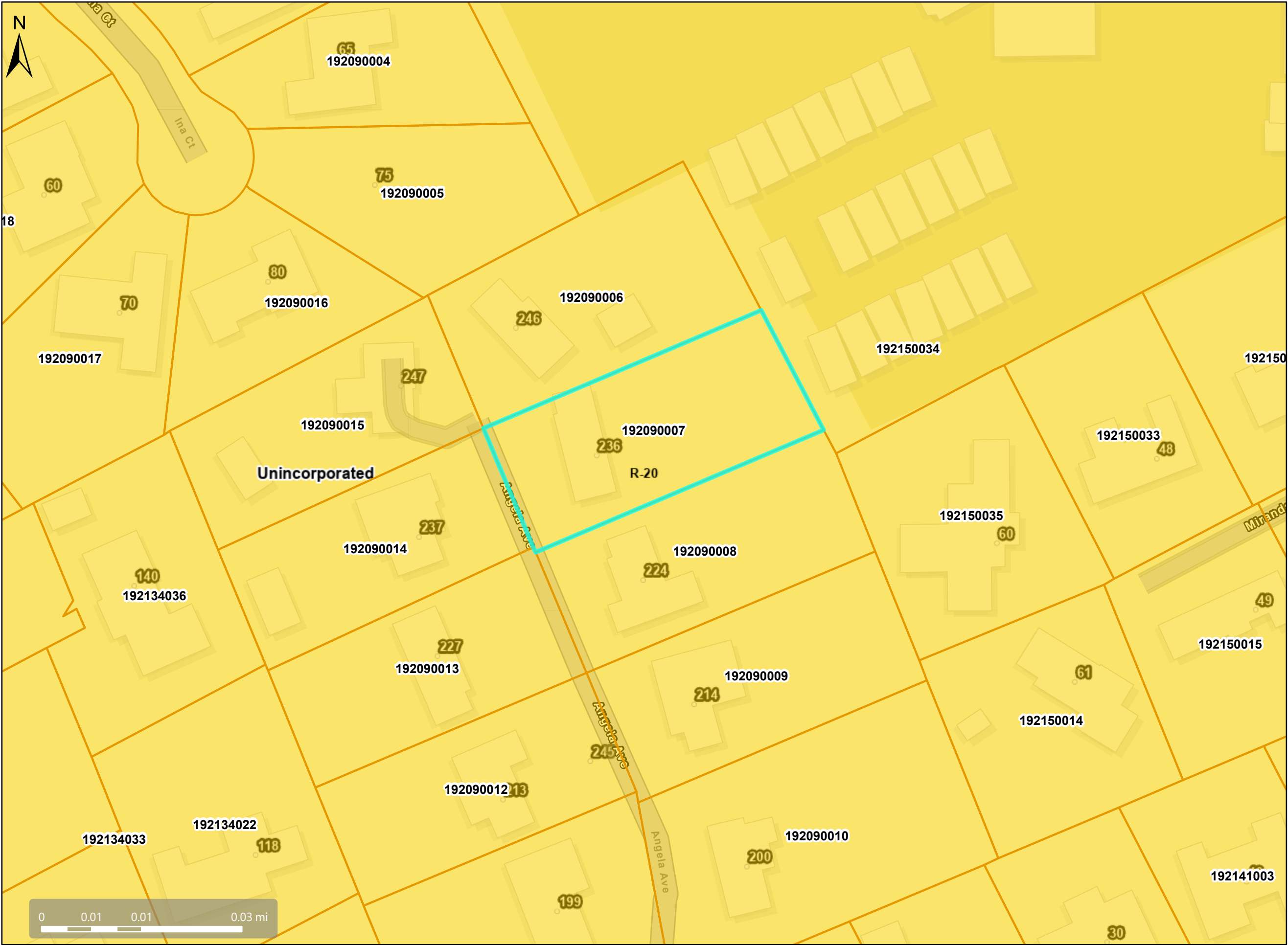
This map is a user generated, static output from an internet mapping application and is intended for reference use only.
Data layers that appear on this map may or may not be accurate, current, or otherwise reliable.

THIS MAP IS NOT TO BE USED FOR NAVIGATION.

CCMap is maintained by Contra Costa County Department of Information Technology, County GIS.
Data layers contained within the CCMap application are provided by various Contra Costa County Departments.
Please direct all data inquiries to the appropriate department.

Spatial Reference
PCS: WGS 1984 Web Mercator Auxiliary Sphere
Datum: WGS 1984

Zoning: R-20



Map Legend

Assessment

Parcels

Zoning

ZONE_OVER

R-20 (Single

Family

Residential)

Unincorporated

Address Points

Aerial View



Map Legend

Assessment

Parcels

Unincorporated

Address Points

Aerials 2019

RGB

Red: Band_1

Green: Band_2

Blue: Band_3

This map is a user generated, static output from an internet mapping application and is intended for reference use only.
Data layers that appear on this map may or may not be accurate, current, or otherwise reliable.
THIS MAP IS NOT TO BE USED FOR NAVIGATION.
CCMap is maintained by Contra Costa County Department of Information Technology, County GIS.
Data layers contained within the CCMap application are provided by various Contra Costa County Departments.
Please direct all data inquiries to the appropriate department.

Spatial Reference
PCS: WGS 1984 Web Mercator Auxiliary Sphere
Datum: WGS 1984