

CONTRA COSTA
HEALTH



cchealth.org

Community Advisory Board

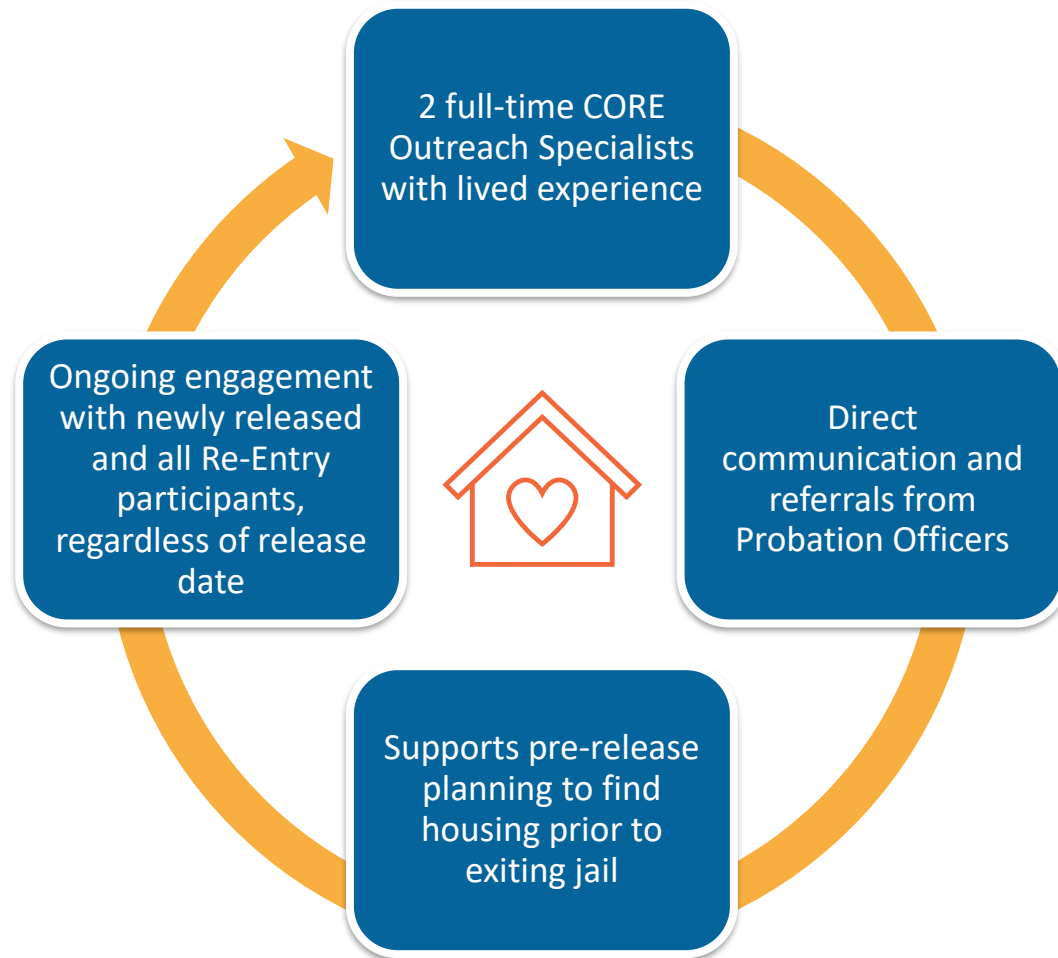
**CORE Outreach
Re-entry Team**

Fadi Elhayek, ASW
CORE Program Director

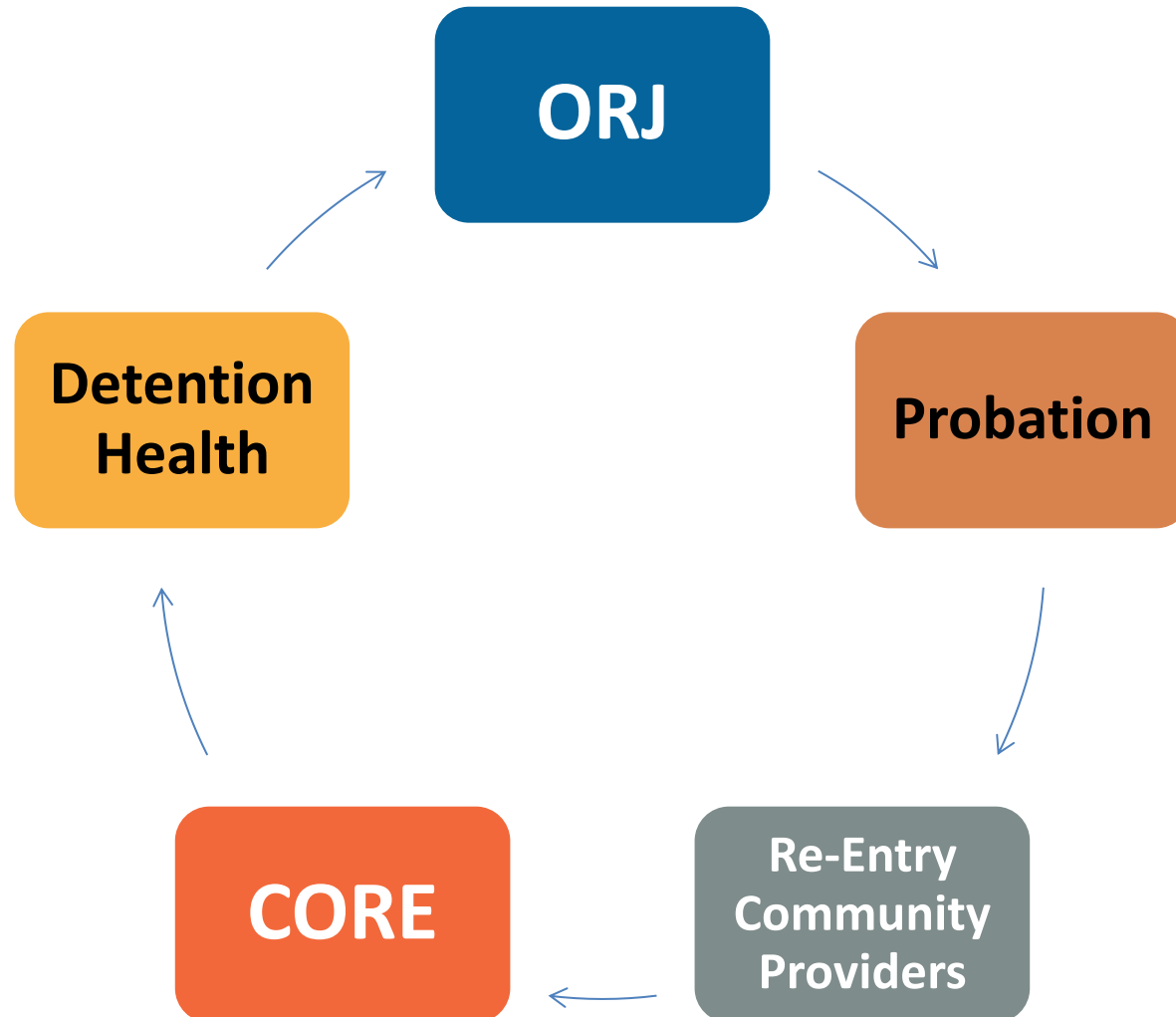
Lisa Thomas
CORE Program Director

August 14, 2025

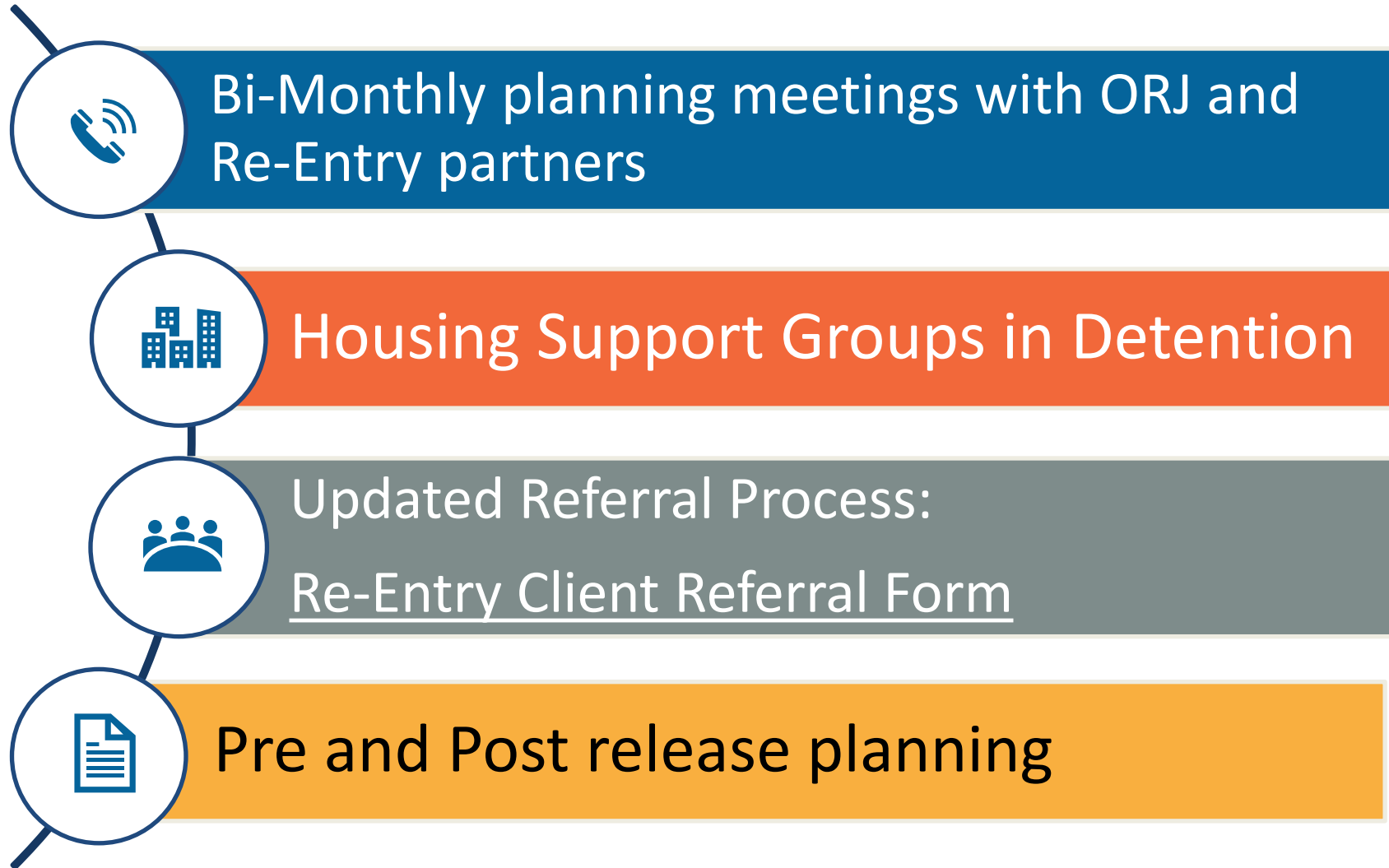
CORE Re-Entry Team



It Takes a Village



Re-Entry Partnership & Process



CORE Re-Entry Outcomes

Since July 1, 2024, CORE served 349 individuals and moved 215 into treatment, shelter and/or stable housing arrangements

Treatment

181 exited to substance use treatment

Rental Unit

16 moved into a rental unit

Friends or family

4 exited to friends/family temporarily

**Emergency
shelter**

18 people moved into shelter

CORE Housing Success



The CORE Re-Entry Team met a determined participant referred by their probation officer prior to release. Communication on the individual's background was provided to the CORE Team to assist.



Pre-release engagement commenced. The CORE Re-Entry completed an intake at the jail and transported them to a residential program to begin their journey.



While in treatment, CORE helped them secure an ID, Social Security card, and birth certificate. CORE also connected them to Men and Women of Purpose to pursue employment.



This participant remains focused and hopeful on their path to housing, remaining in touch in with CORE. Their determination and the collaborative support provided has this participant closer than ever to stability.

Housing-Focused Street Outreach

Contact Us

Call 211 and press 3 to connect to CORE.
Press *Option 5* for those being released
from incarceration.

**CORE operates 7 days a week,
8 a.m. - 12 a.m.**

For any questions, email
CORE@cchealth.org



cchealth.org

Thank You