

Legend

- City Limits
- Highways
- Highways Bay Area
- Streets
- County Boundary
- Bay Area Counties
- Building Outlines
- Assessor Parcels

Aerials 2019

- Red: Band_1
- Green: Band_2
- Blue: Band_3

World Imagery

- Low Resolution 15m Imagery
- High Resolution 60cm Imagery
- High Resolution 30cm Imagery
- Citations

1: 1,128



This map is a user generated static output from an Internet mapping site and is for reference only. Data layers that appear on this map may or may not be accurate, current, or otherwise reliable.

THIS MAP IS NOT TO BE USED FOR NAVIGATION

Notes

Contra Costa County -DOIT GIS



Legend

City Limits

Highways

Highways Bay Area

Streets

General Plan

SV (Single Family Residential - Ver

SL (Single Family Residential - Low

SM (Single Family Residential - Me

SH (Single Family Residential - Hig

ML (Multiple Family Residential - Lc

MM (Multiple Family Residential - M

MH (Multiple Family Residential - H

MV (Multiple Family Residential - V

MS (Multiple Family Residential - V

CC (Congregate Care/Senior Housi

MO (Mobile Home)

M-1 (Parker Avenue Mixed Use)

M-2 (Downtown/Waterfront Rodeo I

M-3 (Pleasant Hill BART Mixed Use

M-4 (Willow Pass Road Mixed Use)

M-5 (Willow Pass Road Commercia

M-6 (Bay Point Residential Mixed U

M-7 (Pittsburg/Bay Point BART Sta

M-8 (Dougherty Valley Village Cent

M-9 (Montalvin Manor Mixed Use)

M-10 (Willow Pass Business Park M

M-11 (Appian Way Mixed Use)

M-12 (Triangle Area Mixed Use)

M-13 (San Pablo Dam Road Mixed

M-14 (Heritage Mixed Use)

CO (Commercial)

OF (Office)

BP (Business Park)

LI (Light Industry)

HI (Heavy Industry)

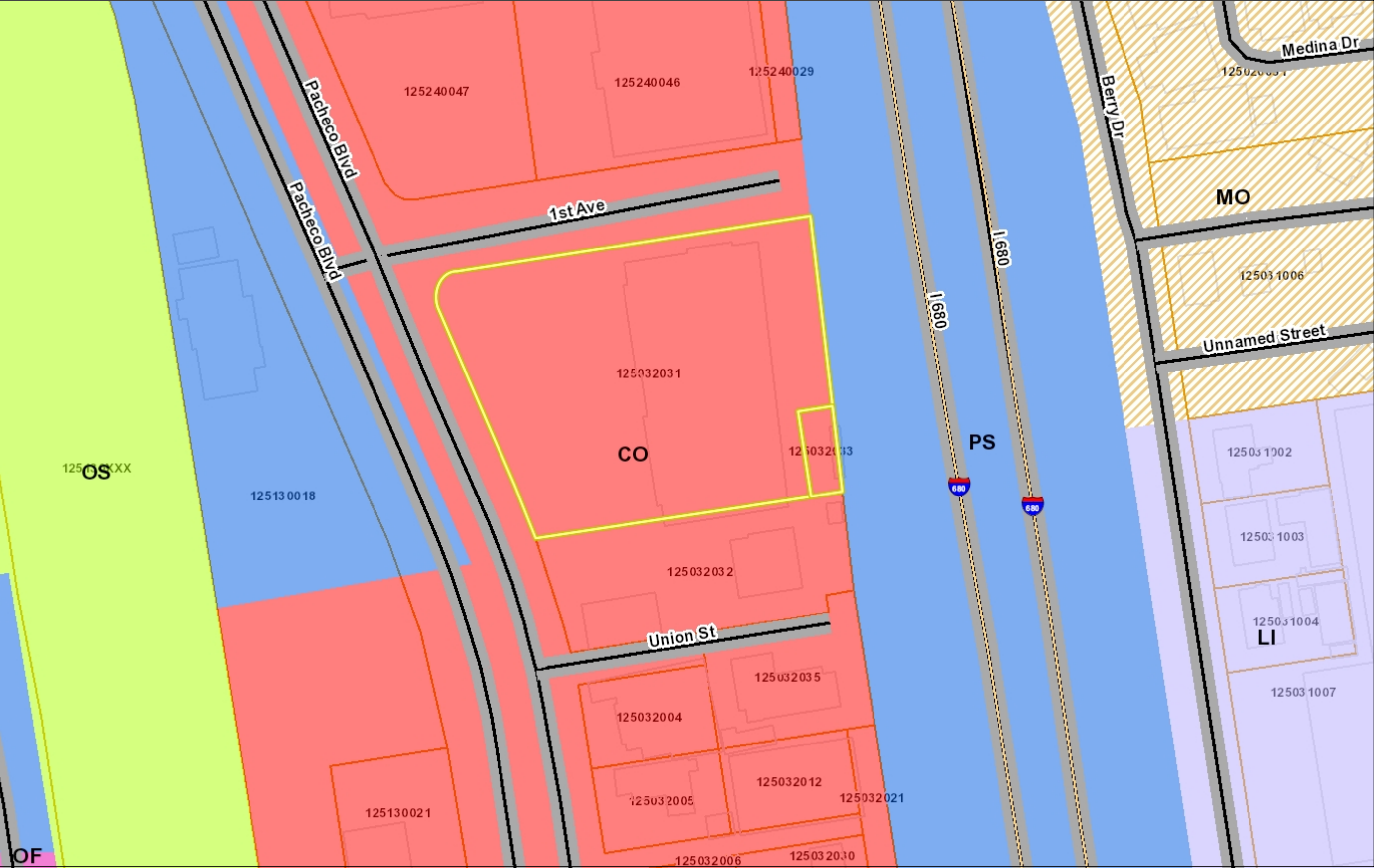
AL, OIBA (Agricultural Lands & Off

CR (Commercial Recreation)

ACO (Airport Commercial)

LF (Landfill)

1: 1,128



WGS_1984_Web_Mercator_Auxiliary_Sphere

This map is a user generated static output from an Internet mapping site and is for reference only. Data layers that appear on this map may or may not be accurate, current, or otherwise reliable.

THIS MAP IS NOT TO BE USED FOR NAVIGATION

Notes

Contra Costa County -DOIT GIS

102-CARL E. THOMPSON

CT 3212

CT 3270

Project Site

2

24

Free Standing
sign

13

STATE
FREEWAY

PACHECO BOOK
SEE BACK

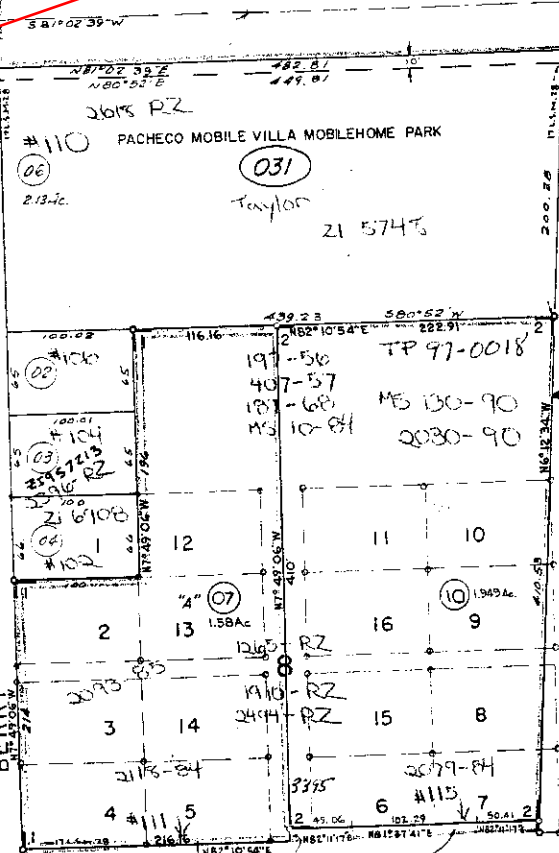
21967592

CENTER

AVE.

BERRY

4



CHECK WITH
AIRPORT LAND USE
COMM. BEFORE
ISSUING BUILDING
PERMITS ON THESE
PARCELS

1"=100'

REVISED	CHANGE	BY
1-8-92	SPLIT-17074/437	JAC
3-2-93	BLK CSI-PCL ID	L.B.

ZM: H-14

031

032 Con 3-2
Con 3-1

ASSESSOR'S MAP
BOOK 125 PAGE 03
CONTRA COSTA COUNTY, CALIF.
53-15

53-16

Zoning: R-B



Legend

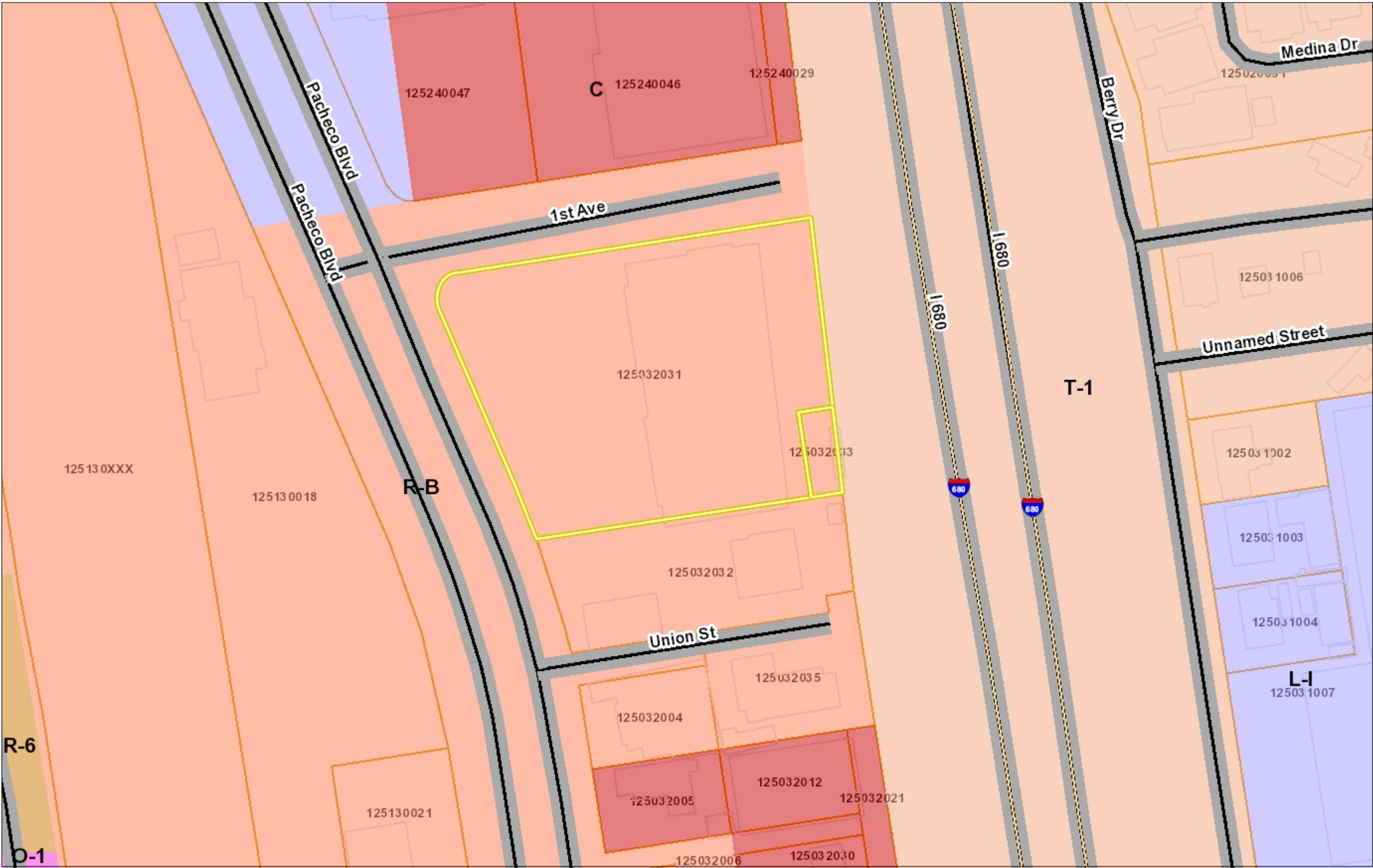
- City Limits
- Highways
- Highways Bay Area
- Streets
- Zoning
 - R-6 (Single Family Residential)
 - R-6 -FH (Single Family Residential Combining District)
 - R-6, -FH -UE (Single Family Resid. Urban Farm Animal Exclusion Com
 - R-6 -SD-1 (Single Family Resident Hillside Development Combining Di
 - R-6 -TOV -K (Single Family Reside View Ordinance and Kensington Cc
 - R-6, -UE (Single Family Residential Exclusion Combining District)
 - R-6 -X (Single Family Residential - Combining District)
 - R-7 (Single Family Residential)
 - R-7 -X (Single Family Residential - Combining District)
 - R-10 (Single Family Residential)
 - R-10, -UE (Single Family Residenti Exclusion Combining District)
 - R-12 (Single Family Residential)
 - R-15 (Single Family Residential)
 - R-20 (Single Family Residential)
 - R-20, -UE (Single Family Residenti Exclusion Combining District)
 - R-40 (Single Family Residential)
 - R-40 -FH (Single Family Residenti Combining District)
 - R-40, -FH -UE (Single Family Resic Urban Farm Animal Exclusion Com
 - R-40, -UE (Single Family Residenti Exclusion Combining District)
 - R-65 (Single Family Residential)
 - R-100 (Single Family Residential)
 - D-1 (Two Family Residential)
 - D-1 -T (Two Family Residential - Tr District)
 - D-1, -UE (Planned Unit - Urban Far Combining District)
 - M-12 (Multiple Family Residential)
 - M-12 -FH (Multiple Family Resident Combining District)
 - M-17 (Multiple Family Residential)
 - M-29 (Multiple Family Residential)

1:1,128



Notes

Contra Costa County -DOIT GIS



0.0 0 0.02 0.0 Miles

WGS_1984_Web_Mercator_Auxiliary_Sphere

This map is a user generated static output from an Internet mapping site and is for reference only. Data layers that appear on this map may or may not be accurate, current, or otherwise reliable.

THIS MAP IS NOT TO BE USED FOR NAVIGATION