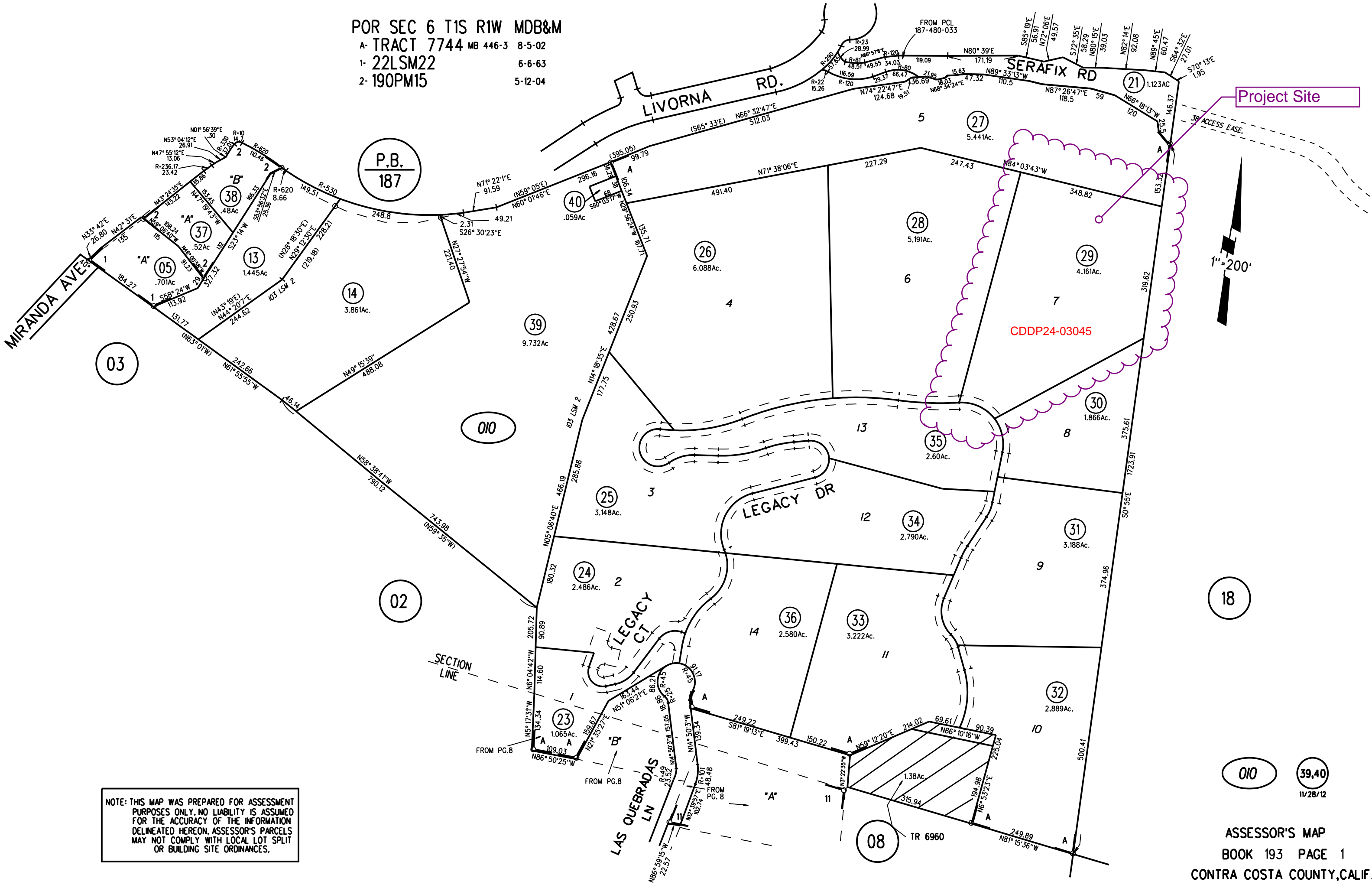


POR SEC 6 T1S R1W MDB&M

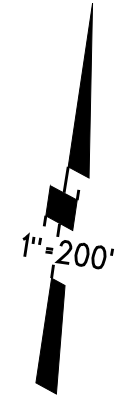
A- TRACT 7744 MB 446-3 8-5-02

1- 22LSM22 6-6-63

2- 190PM15 5-12-04



Project Site



NOTE: THIS MAP WAS PREPARED FOR ASSESSMENT PURPOSES ONLY. NO LIABILITY IS ASSUMED FOR THE ACCURACY OF THE INFORMATION DELINEATED HEREON. ASSESSOR'S PARCELS MAY NOT COMPLY WITH LOCAL LOT SPLIT OR BUILDING SITE ORDINANCES.

OIO 39.40  
11/28/12

# General Plan (11/05/2024): RVL, Residential Very Low; RC, Resource Conservation



## Map Legend

- Assessment Parcels
- General Plan
  - RVL (Residential Very-Low Density) ( $\leq 1$  du/na)
  - RC (Resource Conservation)
  - Unincorporated
- Address Points



This map is a user generated, static output from an internet mapping application and is intended for reference use only.  
Data layers that appear on this map may or may not be accurate, current, or otherwise reliable.  
THIS MAP IS NOT TO BE USED FOR NAVIGATION.  
CCMap is maintained by Contra Costa County Department of Information Technology, County GIS.  
Data layers contained within the CCMap application are provided by various Contra Costa County Departments.  
Please direct all data inquiries to the appropriate department.  
Spatial Reference  
PCS: WGS 1984 Web Mercator Auxiliary Sphere  
Datum: WGS 1984

# Zoning: P-1

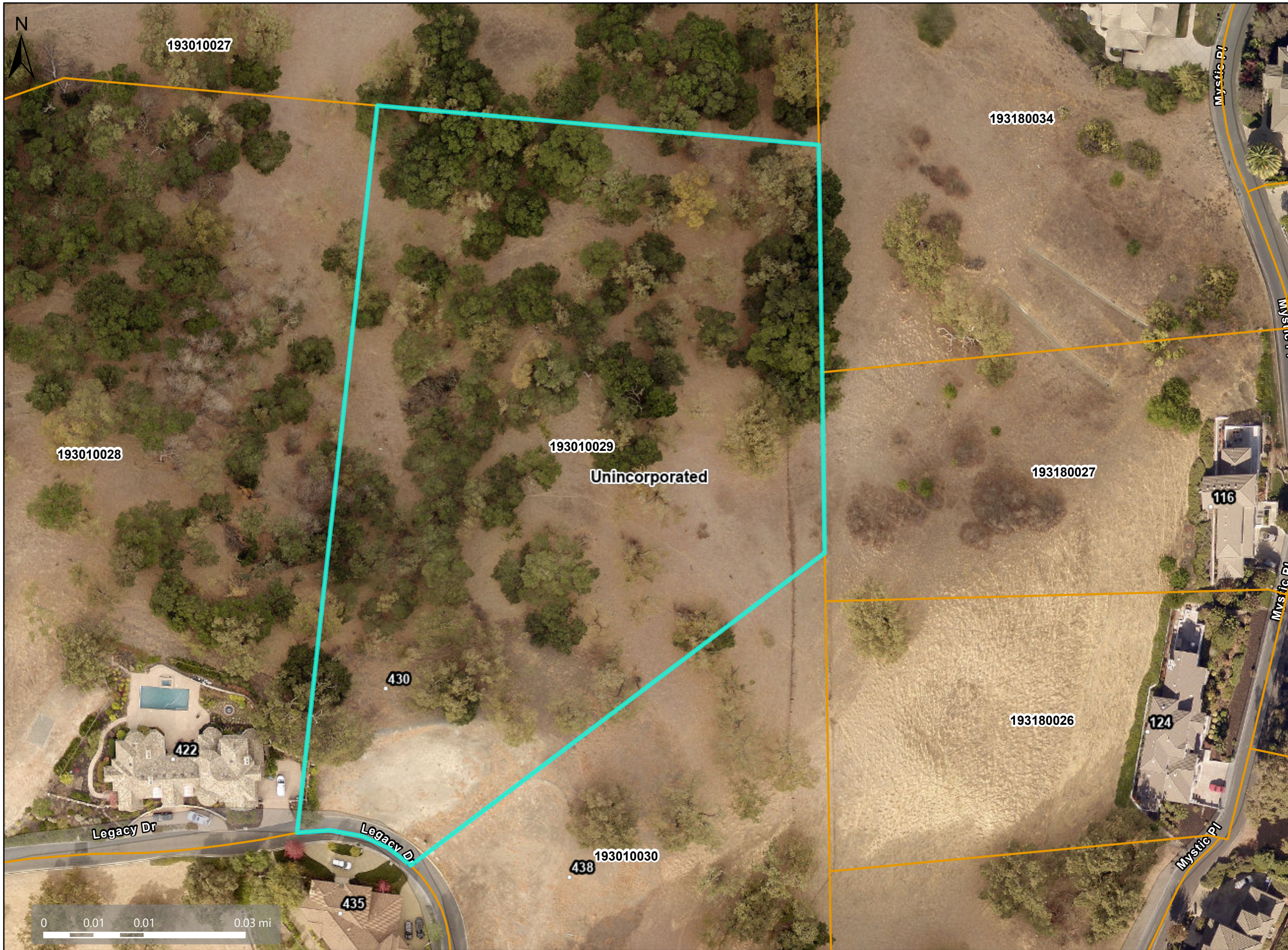


### Map Legend

- Assessment Parcels
- Zoning
- ZONE\_OVER
  - P-1 (Planned Unit)
  - Unincorporated
- Address Points

This map is a user generated, static output from an internet mapping application and is intended for reference use only.  
Data layers that appear on this map may or may not be accurate, current, or otherwise reliable.  
THIS MAP IS NOT TO BE USED FOR NAVIGATION.  
CCMap is maintained by Contra Costa County Department of Information Technology, County GIS.  
Data layers contained within the CCMap application are provided by various Contra Costa County Departments.  
Please direct all data inquires to the appropriate department.  
Spatial Reference  
PCS: WGS 1984 Web Mercator Auxiliary Sphere  
Datum: WGS 1984

# Aerial View



### Map Legend

- Assessment Parcels (orange outline)
- Unincorporated (cyan outline)
- Address Points (small circle)

Aerials 2019  
RGB

- Red: Band\_1
- Green: Band\_2
- Blue: Band\_3

This map is a user generated, static output from an internet mapping application and is intended for reference use only. Data layers that appear on this map may or may not be accurate, current, or otherwise reliable. THIS MAP IS NOT TO BE USED FOR NAVIGATION. CCMMap is maintained by Contra Costa County Department of Information Technology, County GIS. Data layers contained within the CCMMap application are provided by various Contra Costa County Departments. Please direct all data inquires to the appropriate department.

Spatial Reference  
PCS: WGS 1984 Web Mercator Auxiliary Sphere  
Datum: WGS 1984