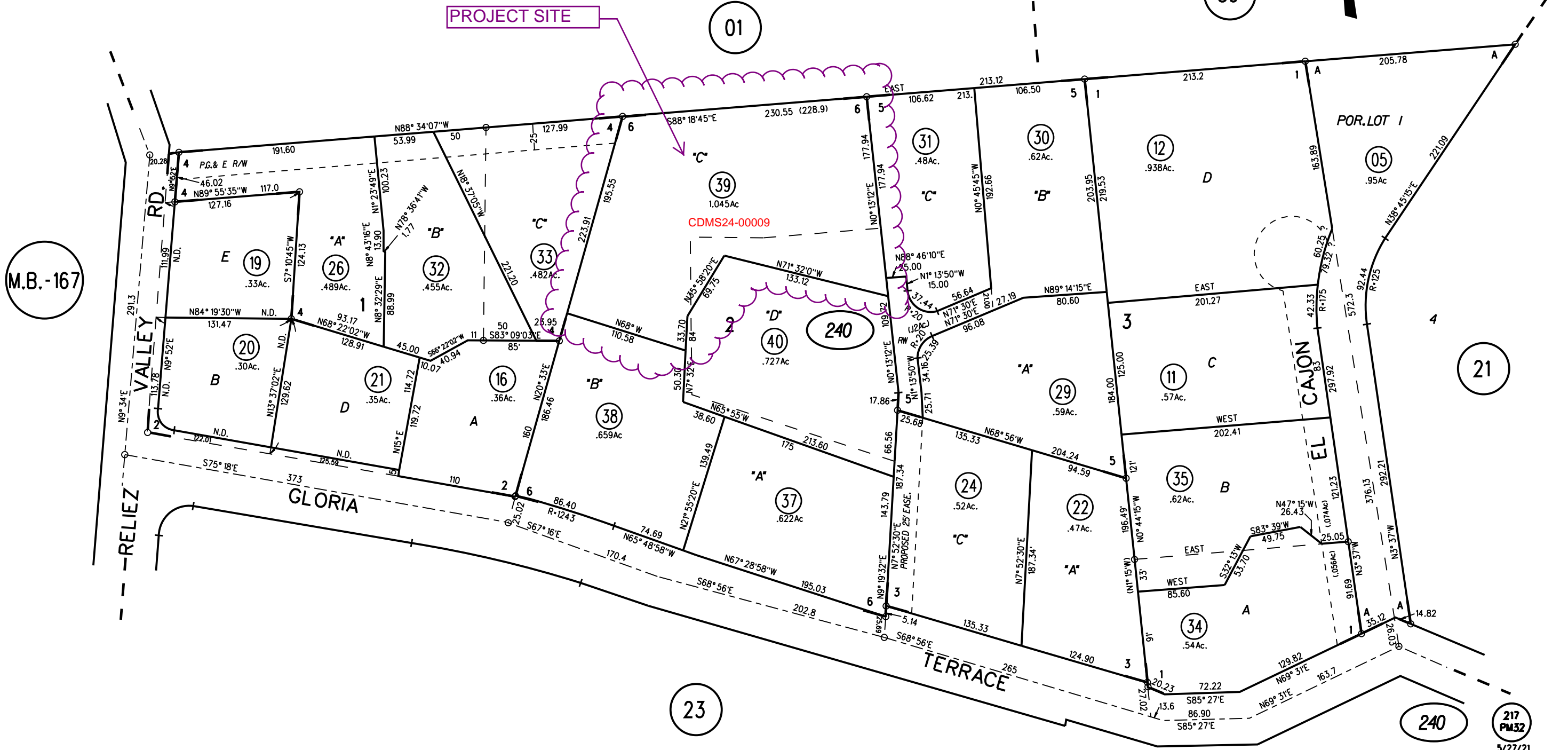


BROOKWOOD ACRES M.B. 9-217
 A- POR.LOT 1 TRACT 6475 MB 303-46 "HASLEMERE" CONDO.

- 1- 35LSM18 6-16-65
- 2- 38LSM38 12-7-65
- 3- 26PM43 3-6-73
- 4- 80PM32 9-7-79
- 5- 86PM42 6-12-80
- 6- 217PM32 4-28-21

1" = 100'

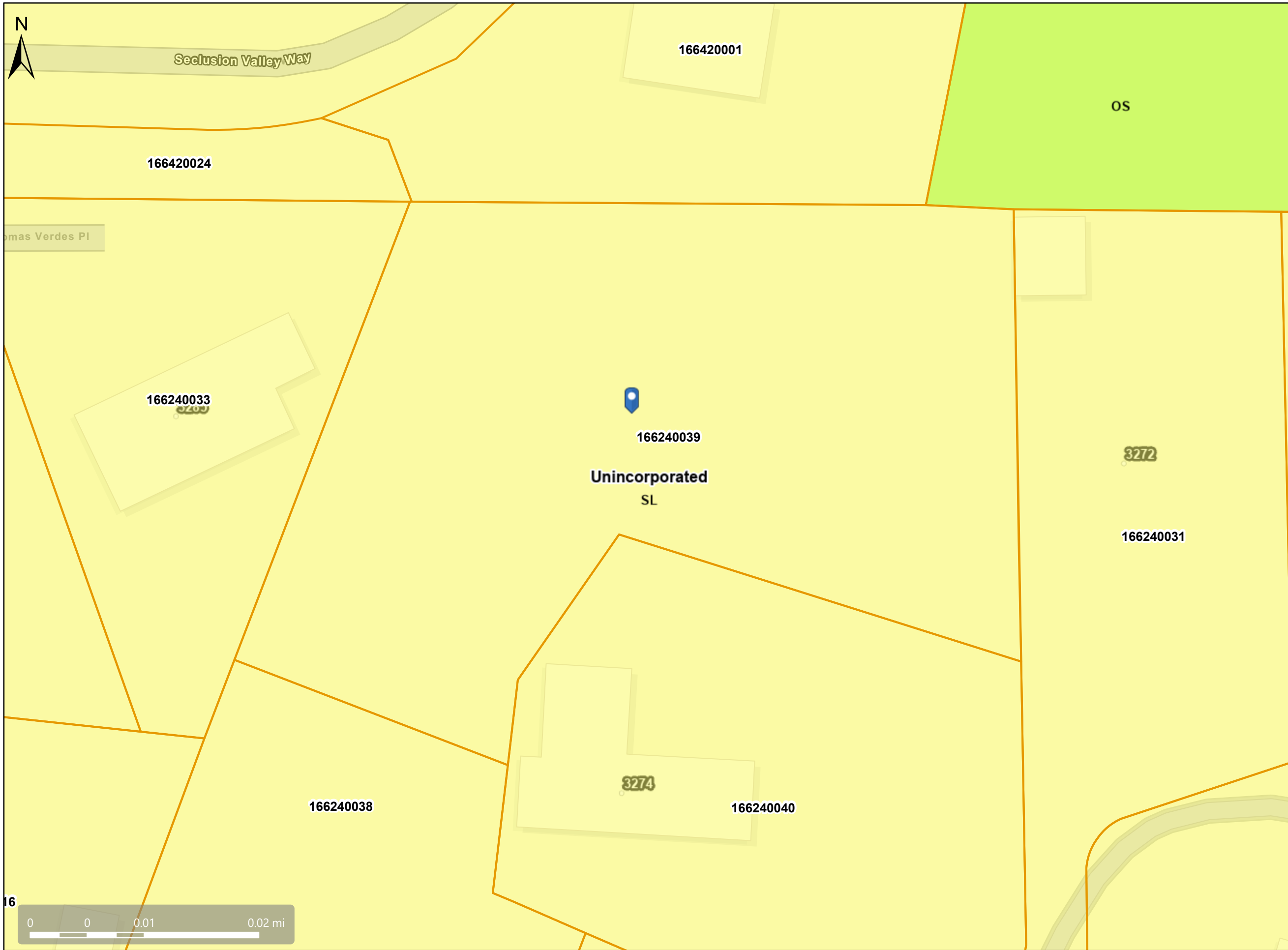


M.B. -167

NOTE: THIS MAP WAS PREPARED FOR ASSESSMENT PURPOSES ONLY. NO LIABILITY IS ASSUMED FOR THE ACCURACY OF THE INFORMATION DELINEATED HEREON. ASSESSOR'S PARCELS MAY NOT COMPLY WITH LOCAL LOT SPLIT OR BUILDING SITE ORDINANCES.



General Plan: SL, Single-Family Residential - Low Density



Map Legend

- Assessment Parcels
- General Plan**
- SL (Single Family Residential - Low) 1.0 - 2.9 Units per Net Acre
- OS (Open Space)
- Unincorporated
- Address Points

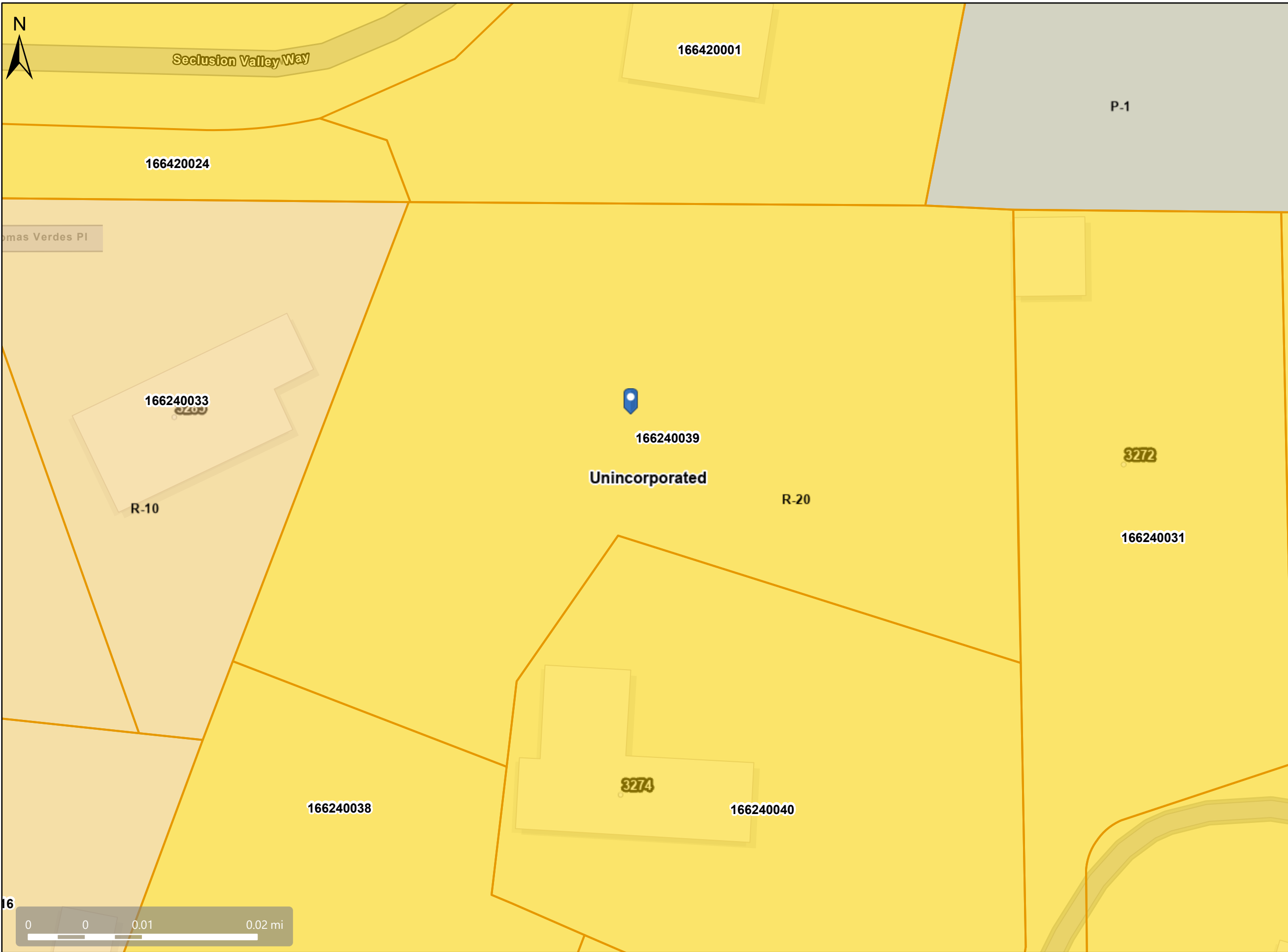


This map is a user generated, static output from an internet mapping application and is intended for reference use only.
 Data layers that appear on this map may or may not be accurate, current, or otherwise reliable.
 THIS MAP IS NOT TO BE USED FOR NAVIGATION.
 CCMAP is maintained by Contra Costa County Department of Information Technology, County GIS.
 Data layers contained within the CCMAP application are provided by various Contra Costa County Departments.
 Please direct all data inquires to the appropriate department.

Spatial Reference
 PCS: WGS 1984 Web Mercator Auxiliary Sphere
 Datum: WGS 1984



Zoning: R-20



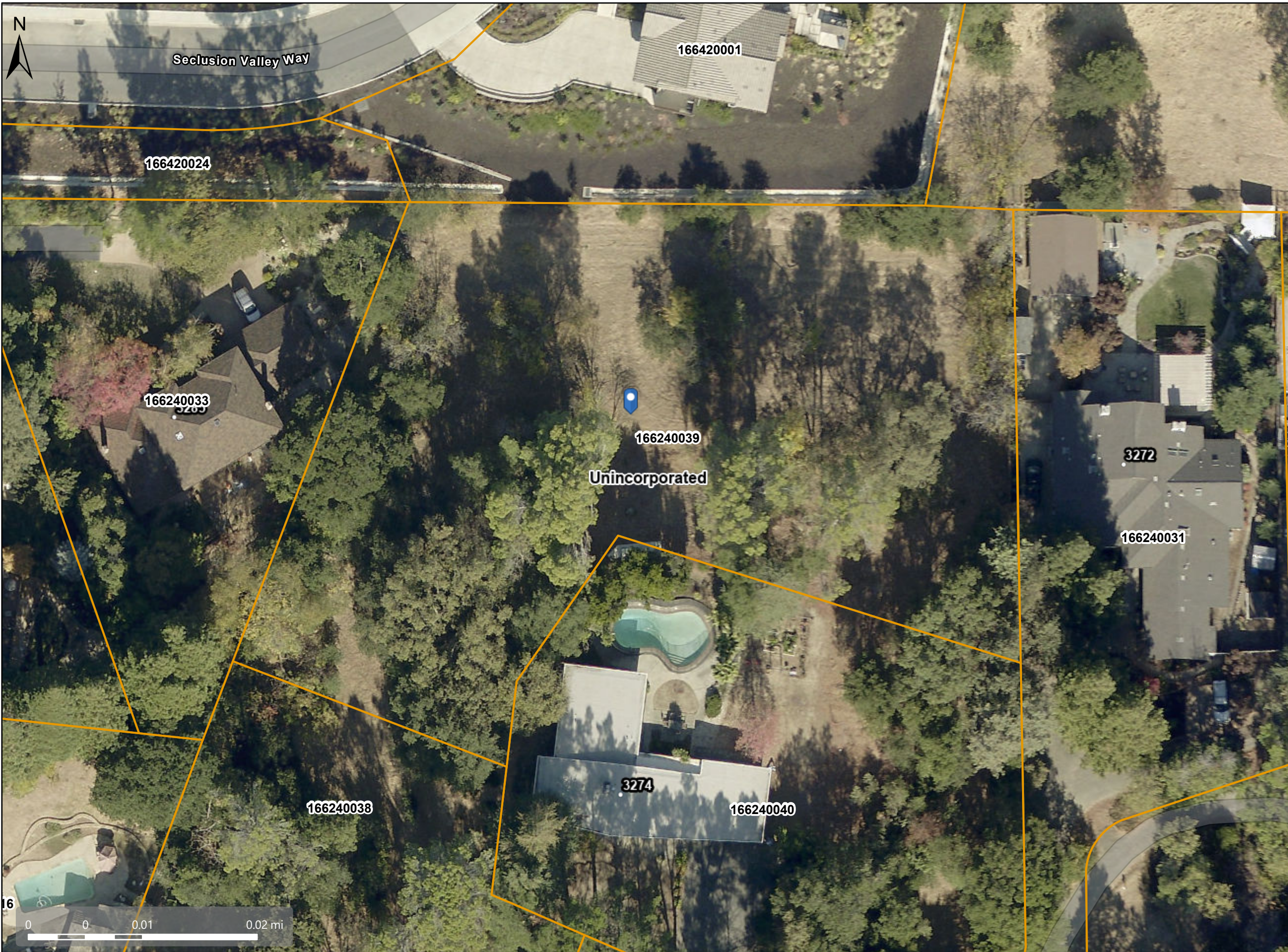
Map Legend

- Assessment Parcels
- Zoning**
- ZONE_OVER**
- R-10 (Single Family Residential)
- R-20 (Single Family Residential)
- P-1 (Planned Unit)
- Unincorporated
- Address Points









This map is a user generated, static output from an internet mapping application and is intended for reference use only.
 Data layers that appear on this map may or may not be accurate, current, or otherwise reliable.
 THIS MAP IS NOT TO BE USED FOR NAVIGATION.
 CCMAP is maintained by Contra Costa County Department of Information Technology, County GIS.
 Data layers contained within the CCMAP application are provided by various Contra Costa County Departments.
 Please direct all data inquiries to the appropriate department.

Spatial Reference
 PCS: WGS 1984 Web Mercator Auxiliary Sphere
 Datum: WGS 1984



Map Legend

-  Assessment Parcels
 -  Unincorporated
 -  Address Points
- Aerials 2019
-  Red: Band_1
 -  Green: Band_2
 -  Blue: Band_3



This map is a user generated, static output from an internet mapping application and is intended for reference use only.
 Data layers that appear on this map may or may not be accurate, current, or otherwise reliable.
 THIS MAP IS NOT TO BE USED FOR NAVIGATION.
 CCMAP is maintained by Contra Costa County Department of Information Technology, County GIS.
 Data layers contained within the CCMAP application are provided by various Contra Costa County Departments.
 Please direct all data inquiries to the appropriate department.

Spatial Reference
 PCS: WGS 1984 Web Mercator Auxiliary Sphere
 Datum: WGS 1984