

Facing the Rising Tide: Sea Level Rise in North Richmond

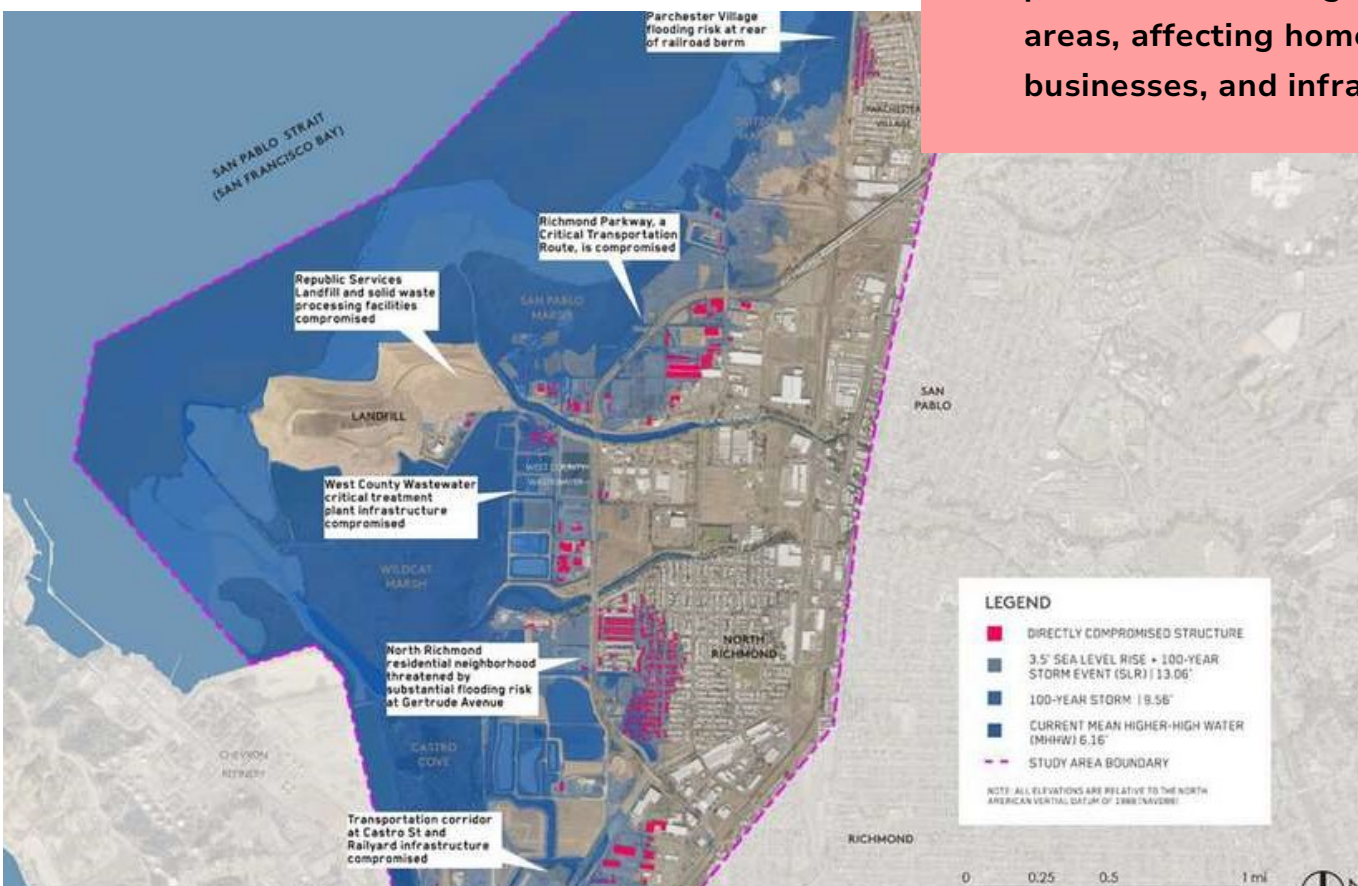
Understanding the Risks — and the Local Solutions Underway

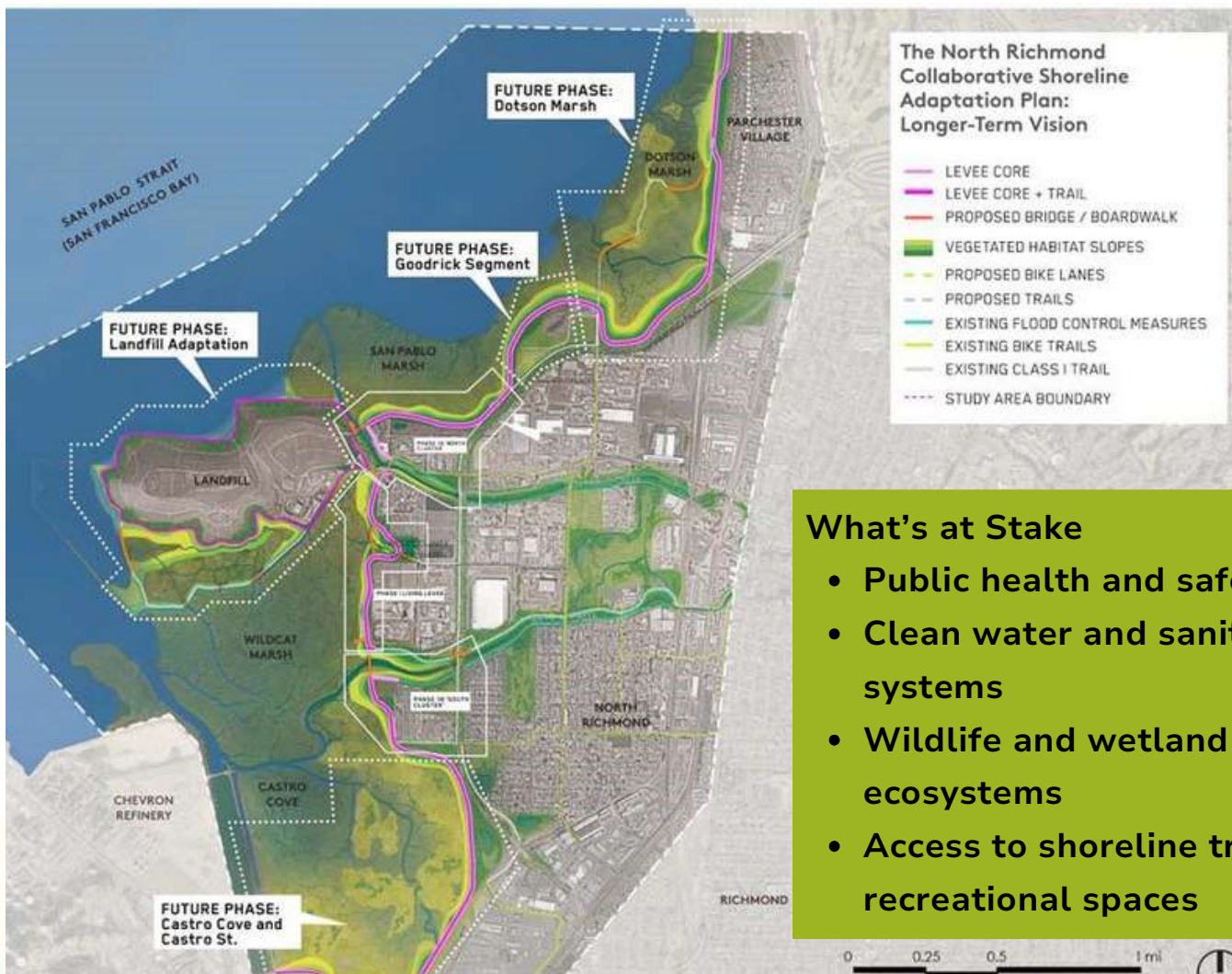
Why Sea Level Rise Matters in North Richmond

- Sea levels are rising. The shoreline around North Richmond faces flooding threats from storm surges and higher tides—today and even more in the future.
- Communities are at risk. Areas like Parchester Village, Parkway, Castro Street, and West County Wastewater facilities face increased danger of coastal flooding.
- Critical habitats are threatened. Wetlands and marshes that filter water and support wildlife may be underwater without action.

Projected Inundation Scenarios

- **+3.4 ft Sea Level Rise → 100-year coastal flood reaches inland neighborhoods**
- **+6.9 ft Sea Level Rise → permanent flooding in low-lying areas, affecting homes, businesses, and infrastructure**





What's at Stake

- Public health and safety
- Clean water and sanitation systems
- Wildlife and wetland ecosystems
- Access to shoreline trails and recreational spaces

Local Solutions Are Already Underway

North Richmond Collaborative Shoreline Plan (CSAP):

A multi-benefit, community-driven plan to create nature-based defenses and restore coastal resilience.

Phase 1: The Living Levee

- Constructed near West County Wastewater
- Combines flood protection with habitat restoration
- Designed to adapt over time to rising tides



What is a Living Levee?

- A Living Levee is a “soft” flood barrier built with native plants, gentle slopes, and wetlands. It:
- Absorbs wave energy
- Filters runoff
- Creates green spaces for wildlife and people

LIVING LEVEE EXAMPLE



Community Power in Action

- This plan is shaped by YOU.
- 20+ community members involved
- Paid workgroups & learning academies
- Tribal engagement and local workforce pathways
- Focus on equity, inclusion, and long-term local benefits



“WE ARE A
DISINVESTED, BUT
NOT A DISINTERESTED
COMMUNITY.”

Clean & Green Infrastructure Upgrades

- 1.1 MW of On-Site Solar Power Generation
- 3.1 MW of Battery Storage
- Creation of Microgrid
- LED Lighting and EV Chargers
- Resource Recovery Plant Optimization
- Grit Separation System, Rotary Drum Thickeners, High Efficiency Aeration Blower, New Digesters, 450 kW Cogeneration System, Sludge Dewatering System, Sludge Thermal Dryer System
- Equalization Basin Expansion
- Produce Class A Biosolids



How You Can Help

- Learn more about the North Richmond Shoreline Plan
- Join a workshop or community workgroup
- Advocate for climate investments that protect your neighborhood
- Support tribal and environmental justice leadership

BROUGHT TO YOU BY:
WEST COUNTY WASTEWATER, SAN FRANCISCO ESTUARY
PARTNERSHIP, CONTRA COSTA COUNTY HAZARDOUS
MATERIALS COMMISSION, AND COMMUNITY PARTNERS