



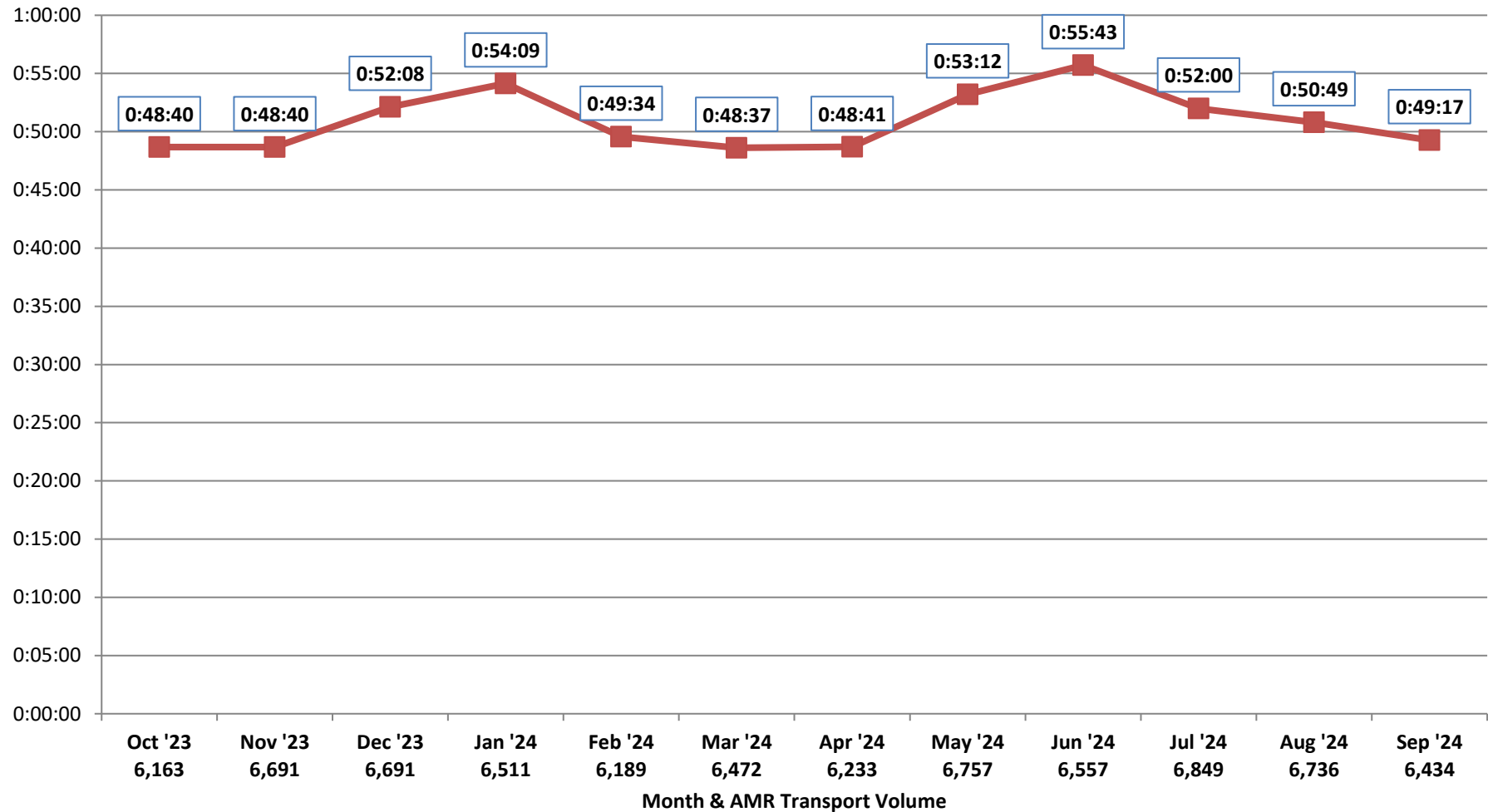
## Patient Transfer of Care Times by Facility

### 90th PERCENTILE OF ALL FACILITIES

October 2023 - September 2024

78,014 Transports (6,501 per Month)

Source: AMR MEDS (ePCR Database)



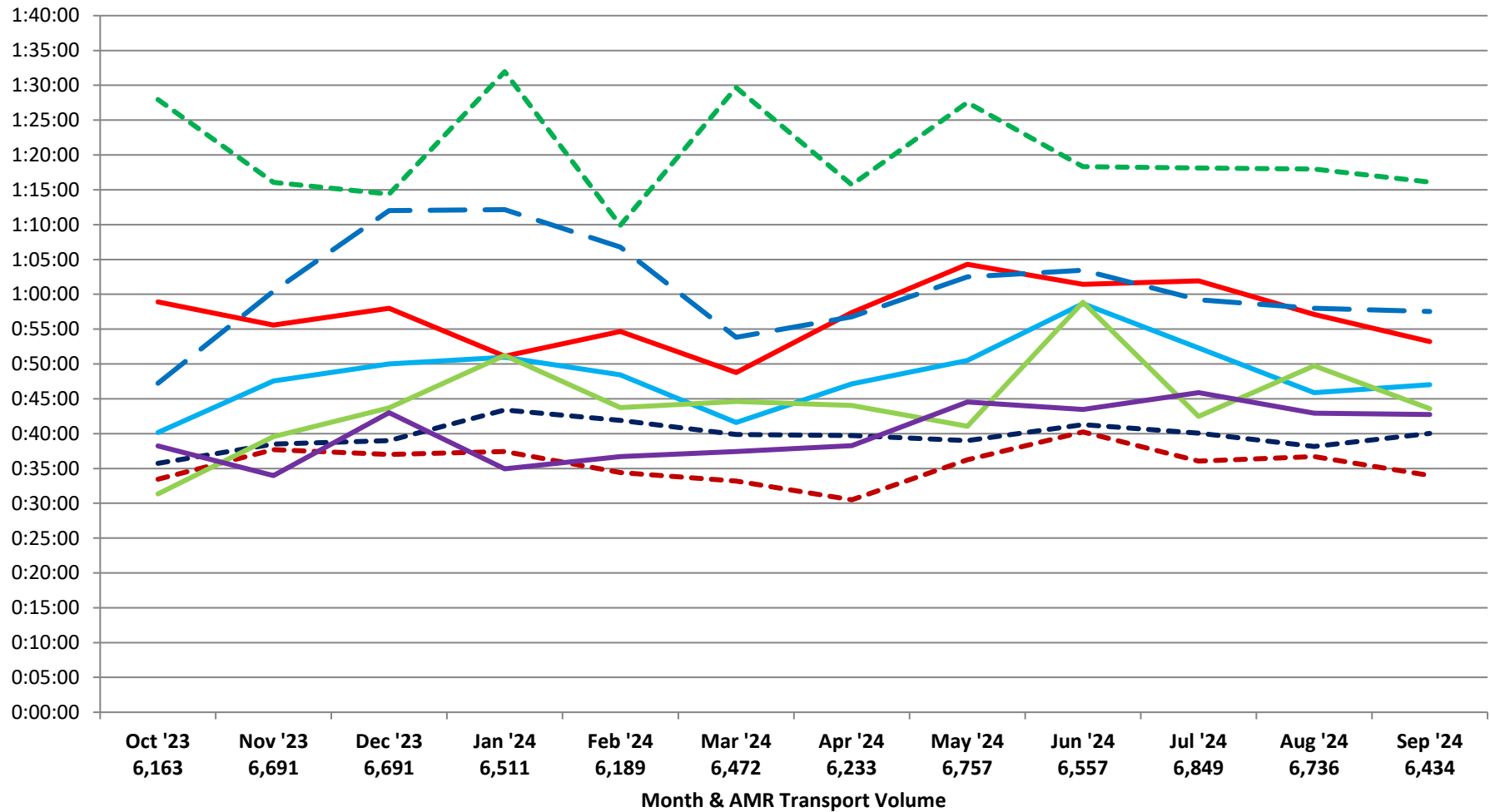


# Patient Transfer of Care Times by Facility (90th Percentile)

October 2023 - September 2024

Source: AMR MEDS (ePCR Database)

- - - John Muir - Concord
- - - Kaiser Hospital - Richmond
- - - Sutter Delta Medical Center
- John Muir - Walnut Creek
- Kaiser Hospital - Walnut Creek
- - - PES - Contra Costa Regional Medical Center
- Kaiser Hospital - Antioch
- Contra Costa Regional Medical Center





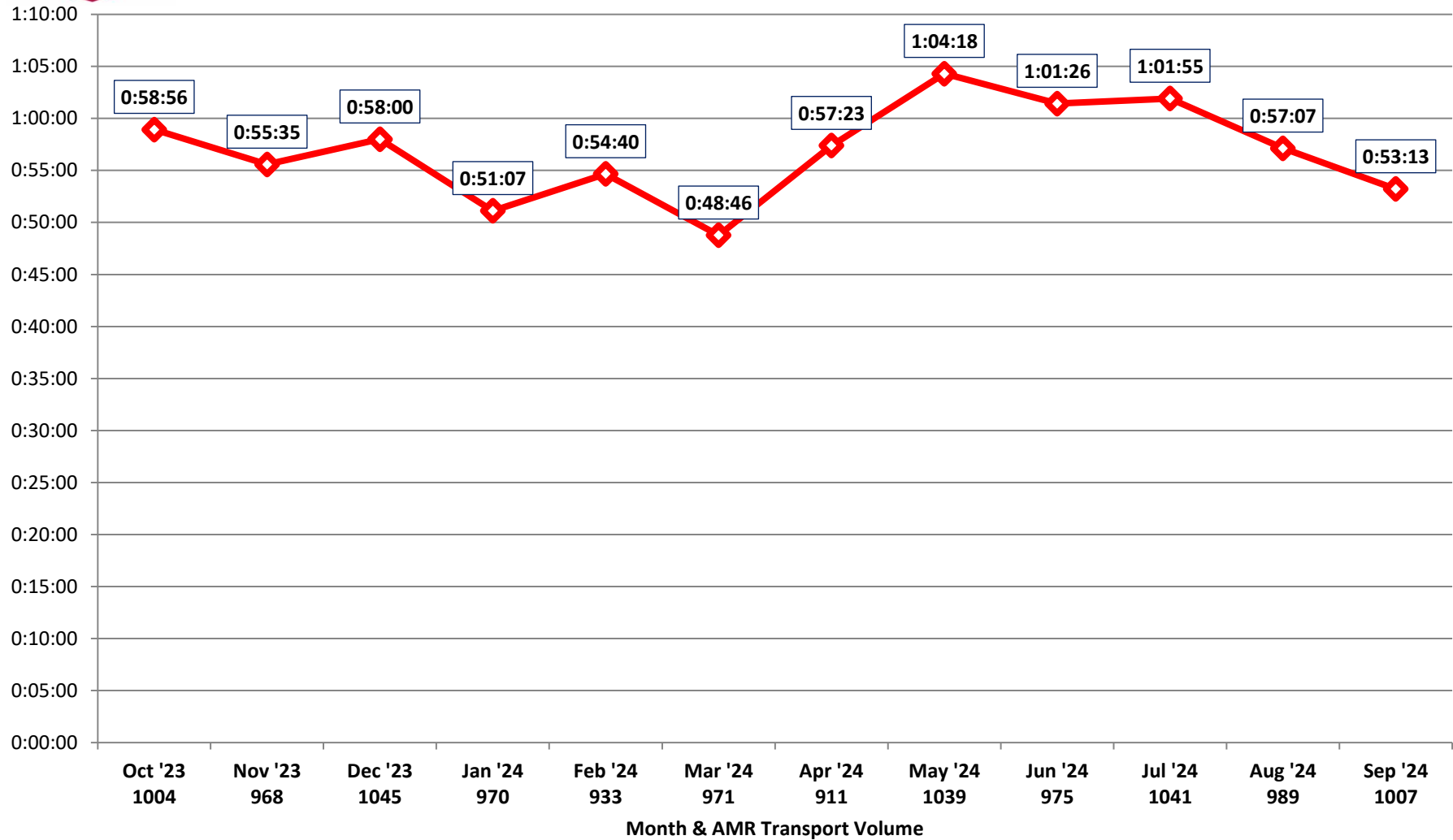
## Patient Transfer of Care Times by Facility (90th Percentile)

### John Muir - Walnut Creek

October 2023 - September 2024

11,853 Total Transports (988 per Month)

Source: AMR MEDS (ePCR Database)





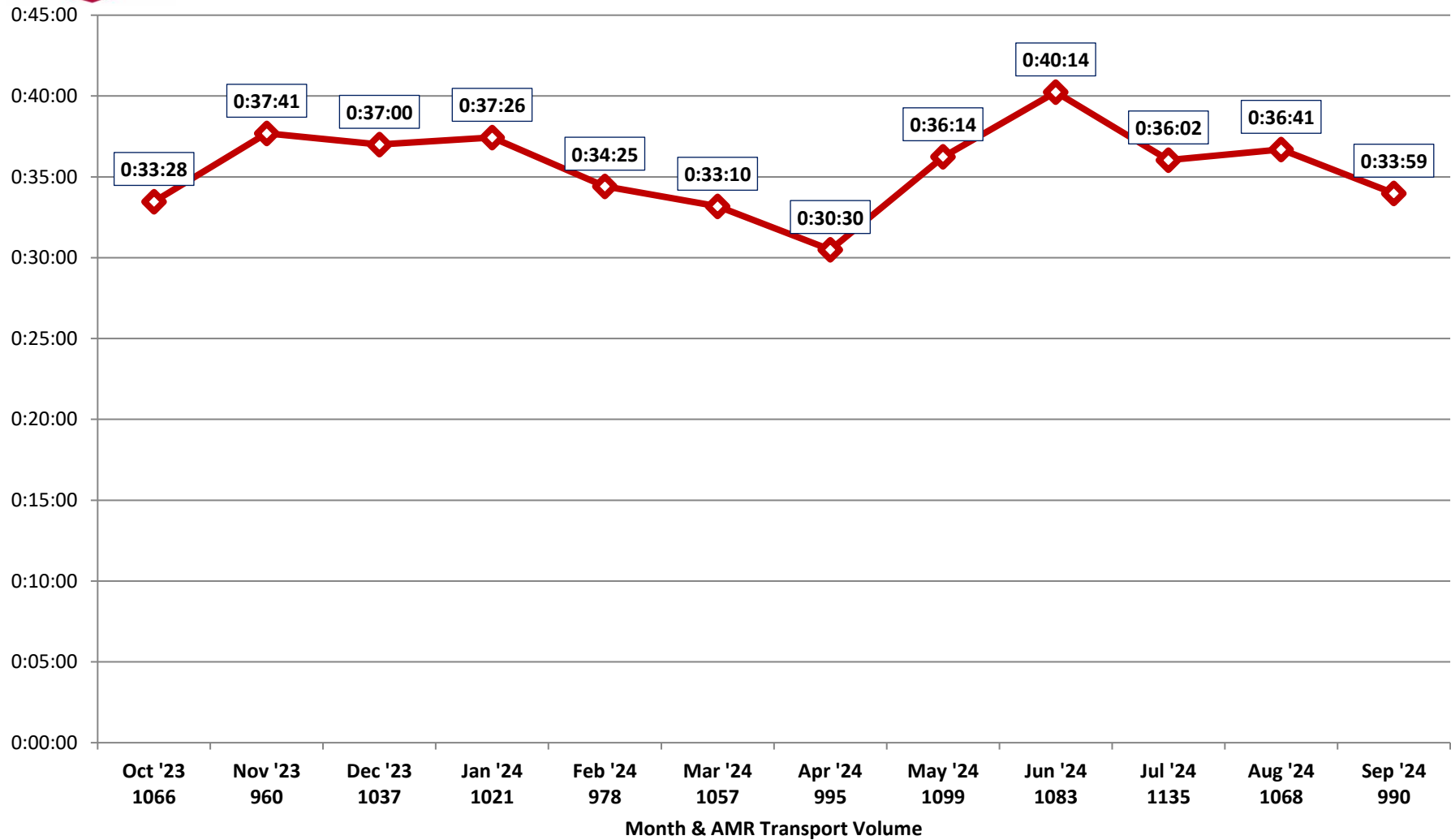
## Patient Transfer of Care Times by Facility (90th Percentile)

### John Muir - Concord

October 2023 - September 2024

12,489 Total Transports (1041 per Month)

Source: AMR MEDS (ePCR Database)





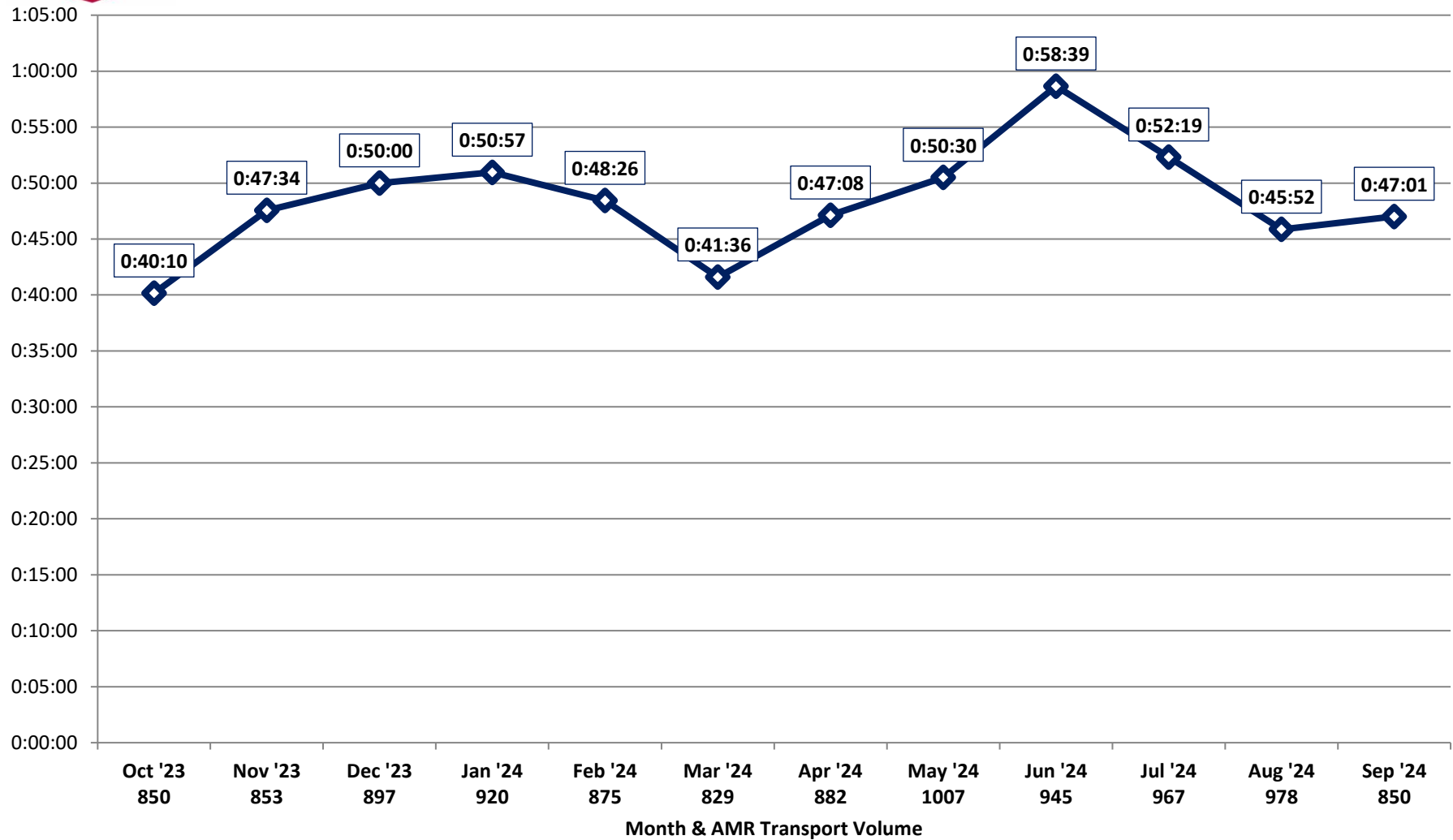
# Patient Transfer of Care Times by Facility (90th Percentile)

## Kaiser - Antioch

October 2023 - September 2024

10,853 Total Transports (904 per Month)

Source: AMR MEDS (ePCR Database)





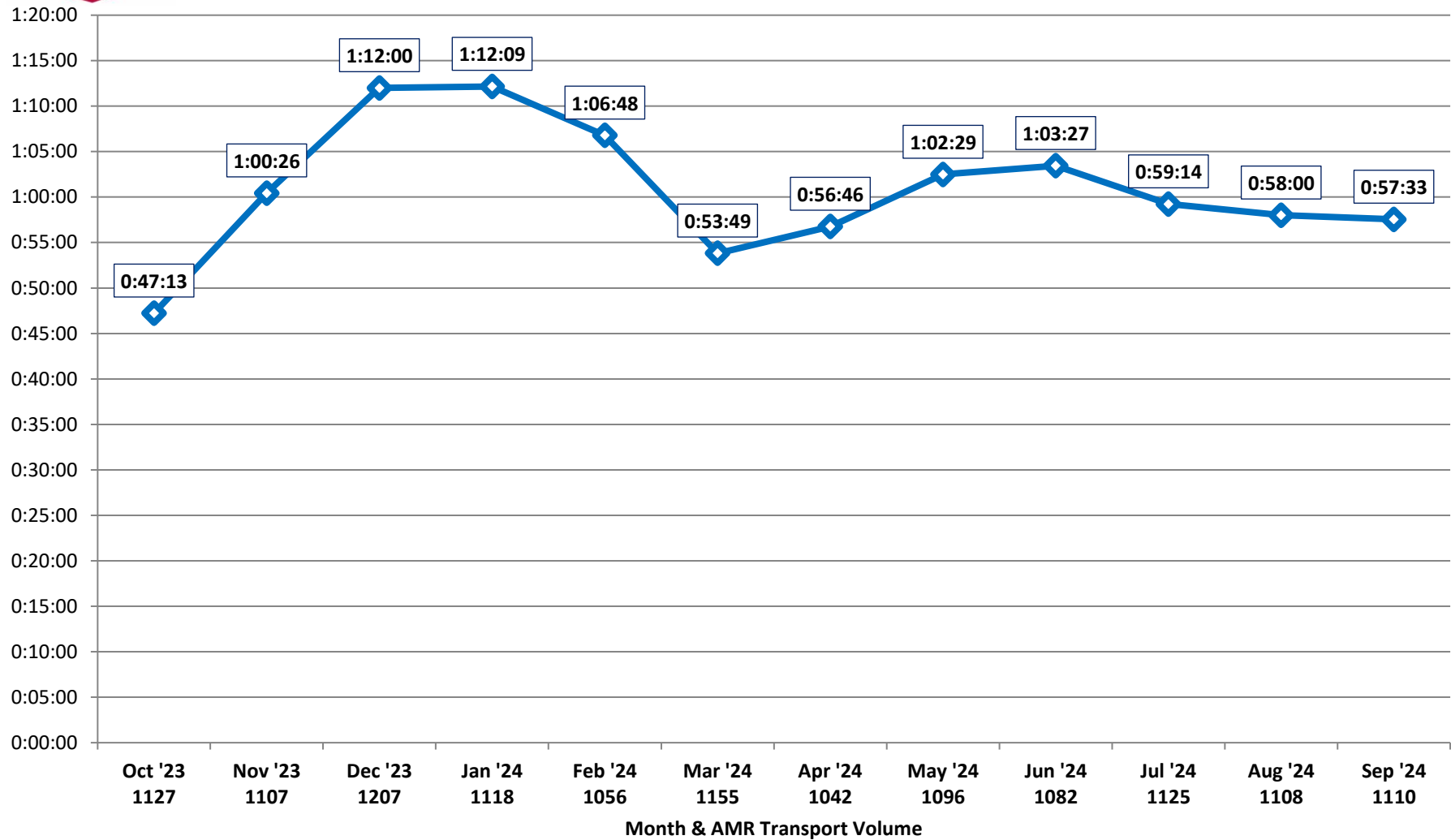
## Patient Transfer of Care Times by Facility (90th Percentile)

### Kaiser - Richmond

October 2023 - September 2024

13,333 Total Transports (1111 per Month)

Source: AMR MEDS (ePCR Database)





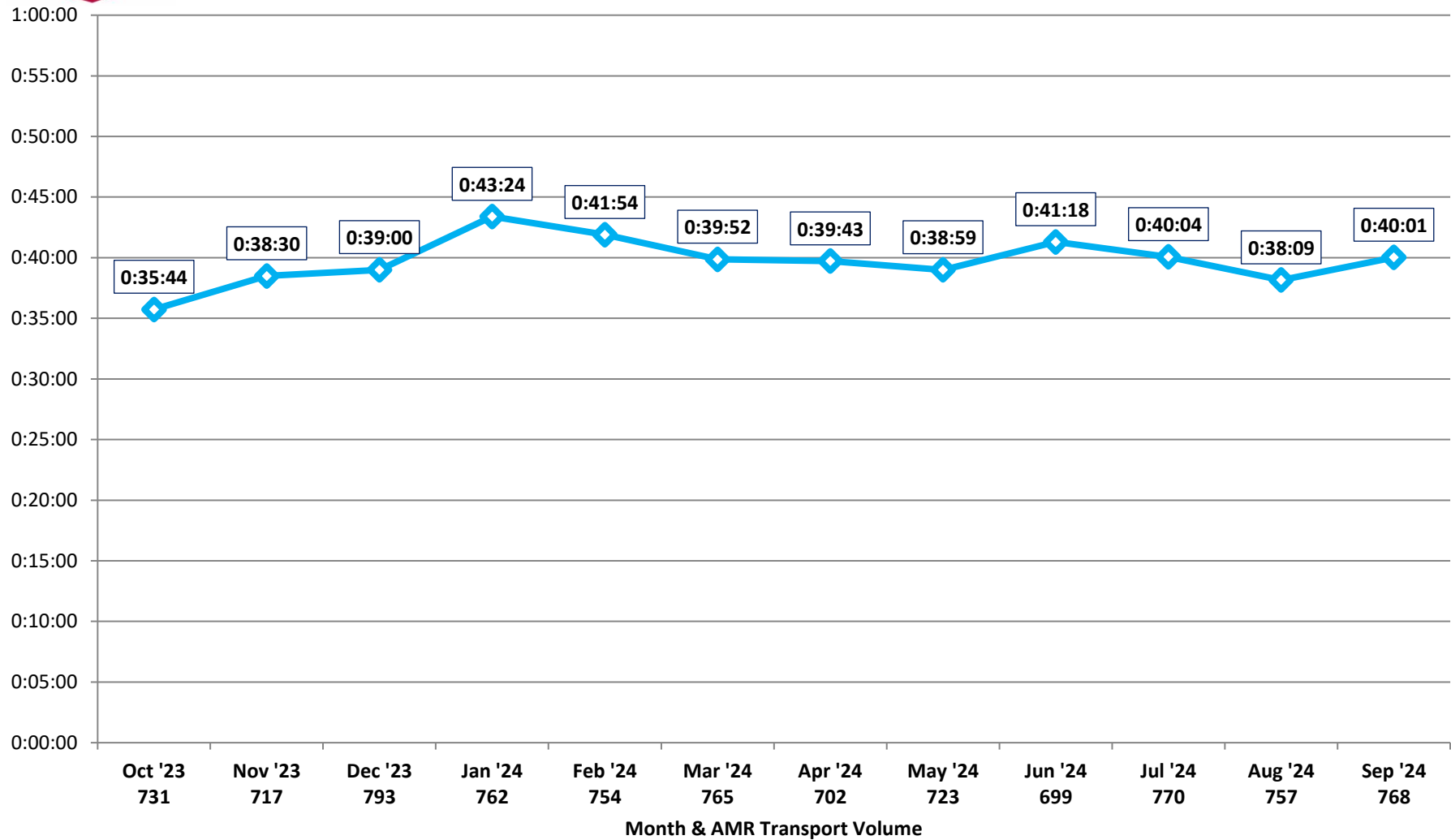
## Patient Transfer of Care Times by Facility (90th Percentile)

### Kaiser - Walnut Creek

October 2023 - September 2024

8,941 Total Transports (745 per Month)

Source: AMR MEDS (ePCR Database)





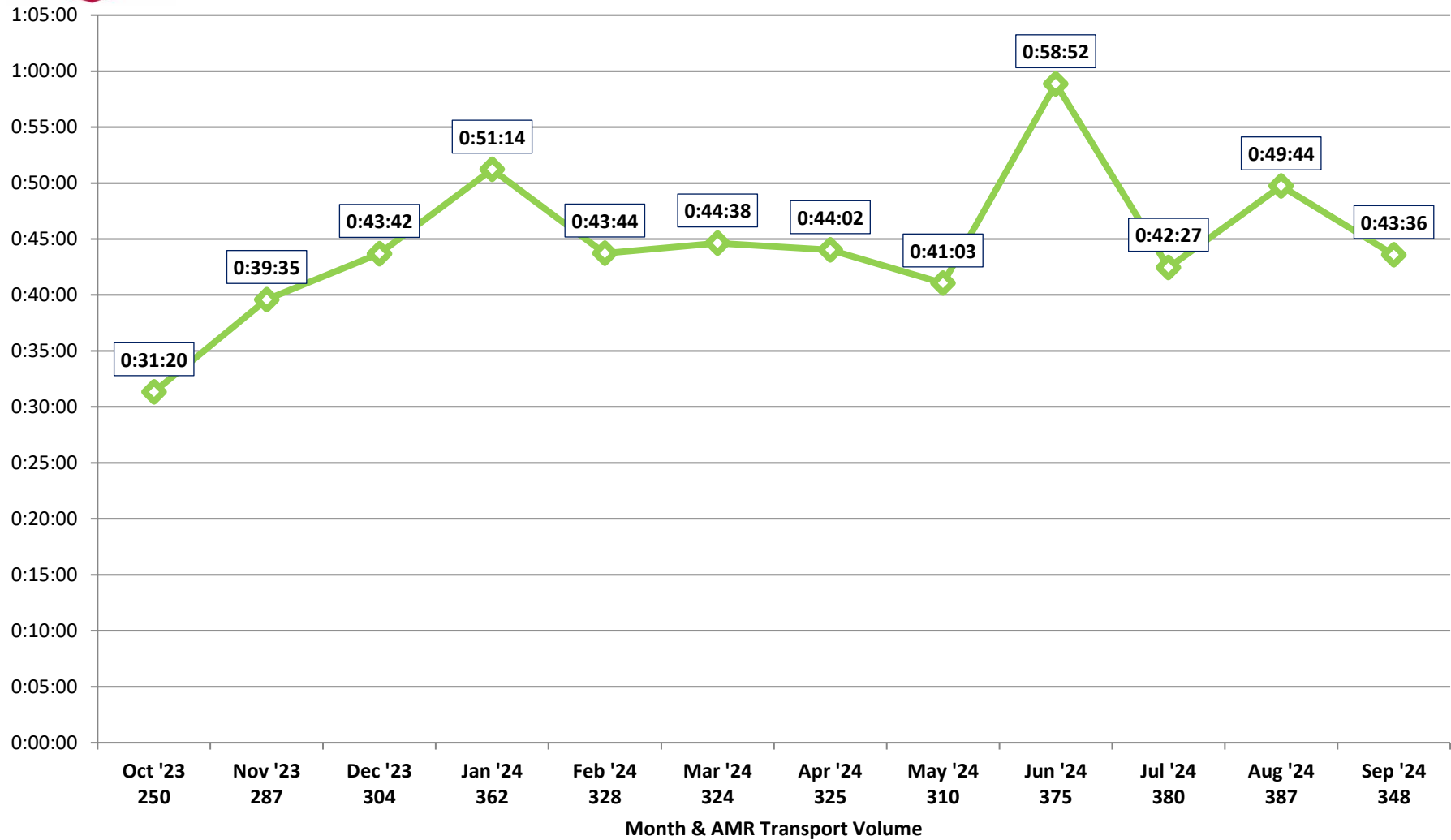
## Patient Transfer of Care Times by Facility (90th Percentile)

### Contra Costa Regional Medical Center

October 2023 - September 2024

3,980 Total Transports (332 per Month)

Source: AMR MEDS (ePCR Database)







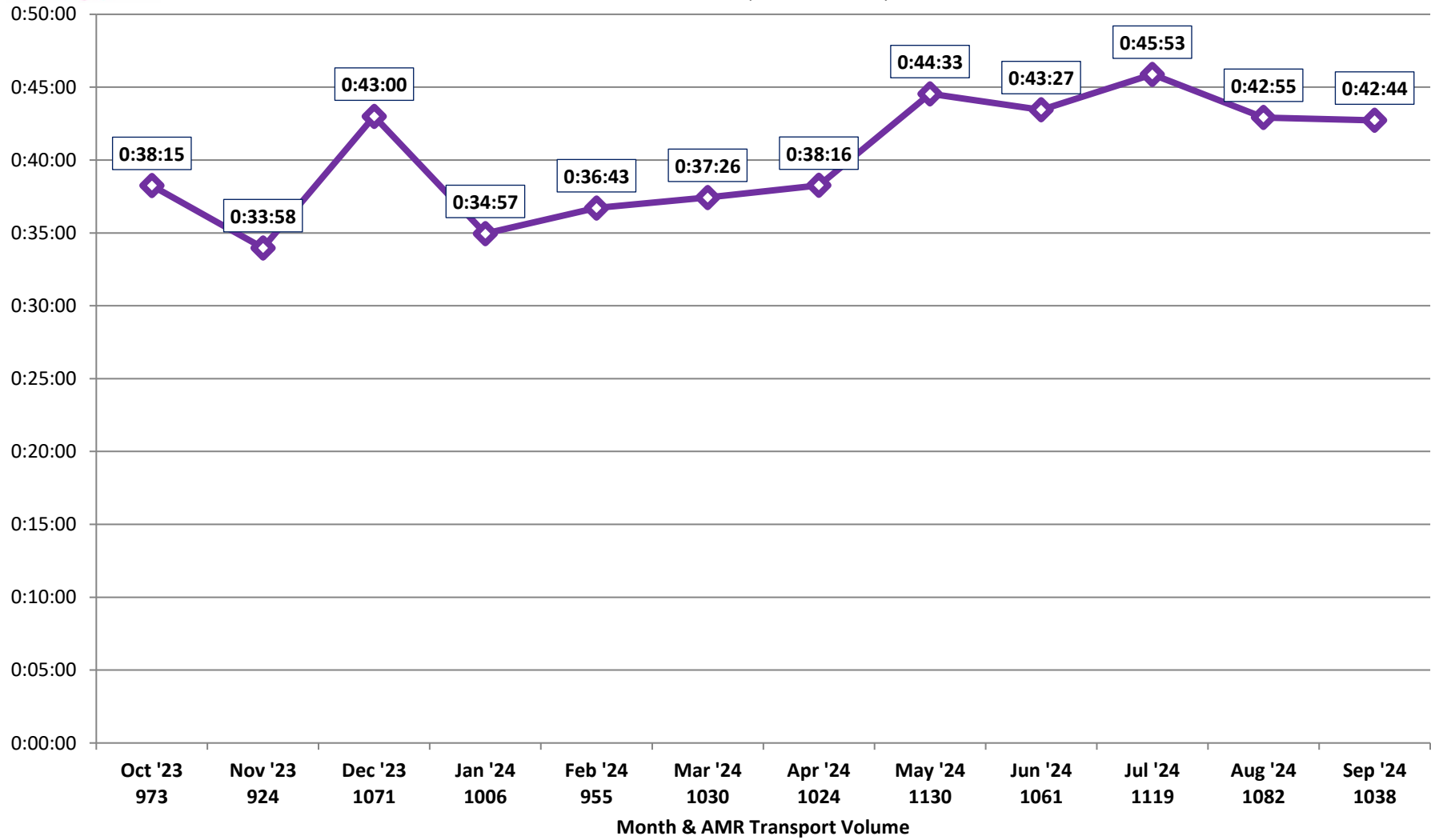
## Patient Transfer of Care Times by Facility (90th Percentile)

### Sutter Delta Medical Center

October 2023 - September 2024

12,413 Total Transports (1034 per Month)

Source: AMR MEDS (ePCR Database)





## Patient Transfer of Care Times by Facility (90th Percentile)

### CCRMC - PES

October 2023 - September 2024

4,152 Total Transports (346 per Month)

Source: AMR MEDS (ePCR Database)

