

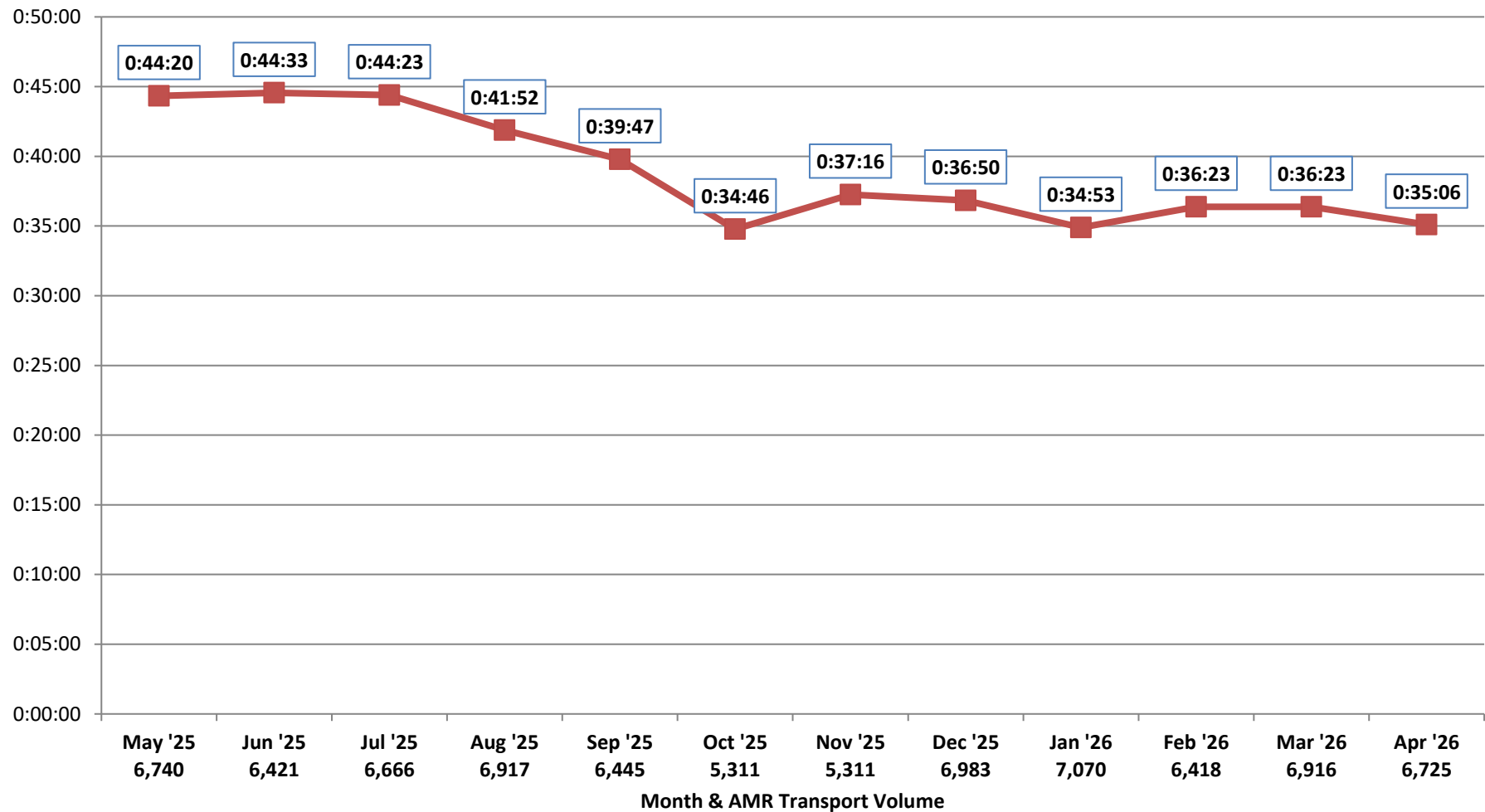


Patient Transfer of Care Times by Facility 90th PERCENTILE OF ALL FACILITIES

May 2025 - April 2026

79,174 Transports (6,598 per Month)

Source: AMR MEDS (ePCR Database)



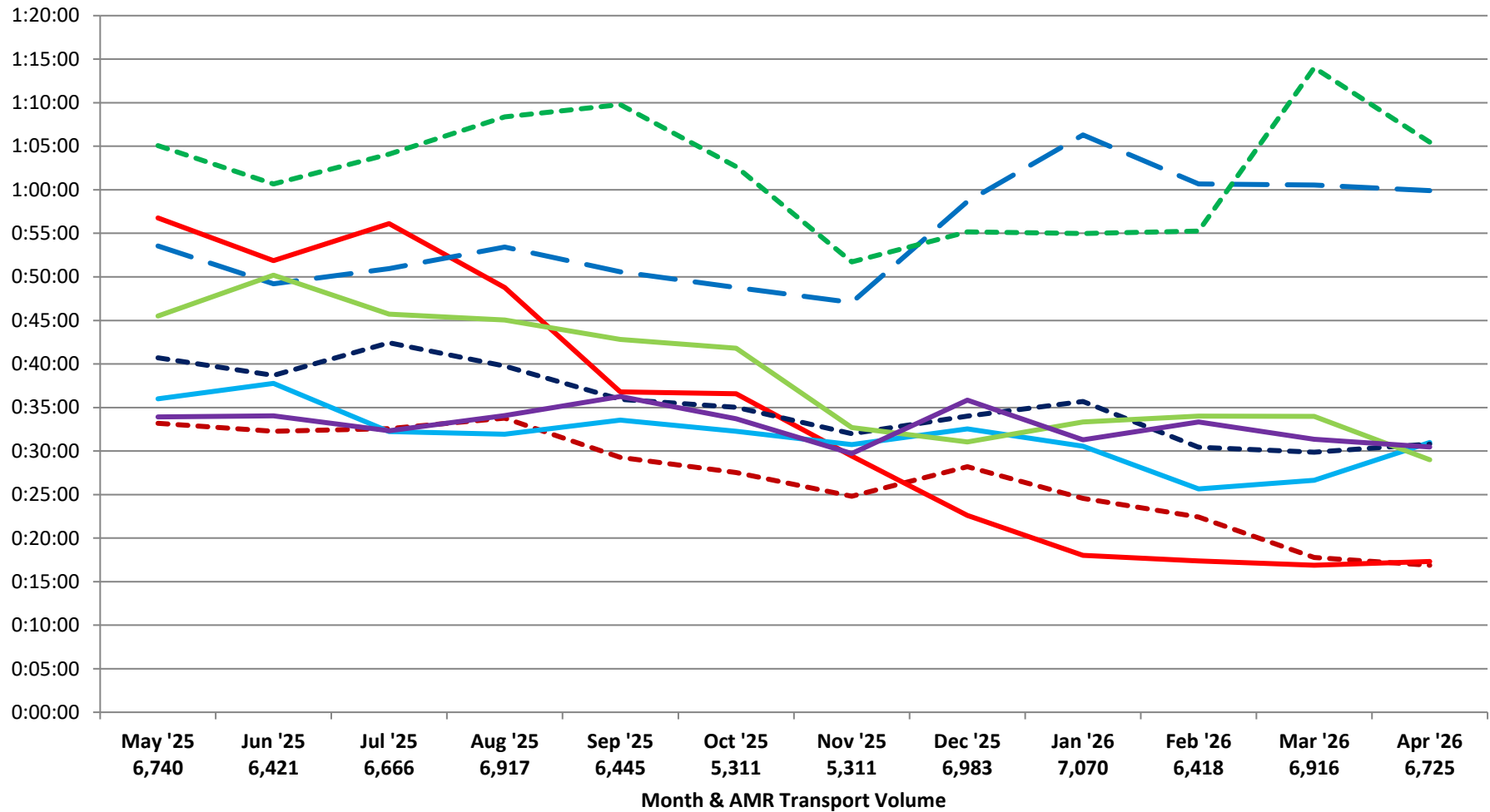


Patient Transfer of Care Times by Facility (90th Percentile)

May 2025 - April 2026

Source: AMR MEDS (ePCR Database)

- - - John Muir - Concord
- John Muir - Walnut Creek
- Kaiser Hospital - Antioch
- Kaiser Hospital - Richmond
- - - Kaiser Hospital - Walnut Creek
- Contra Costa Regional Medical Center
- Sutter Delta Medical Center
- - - PES - Contra Costa Regional Medical Center





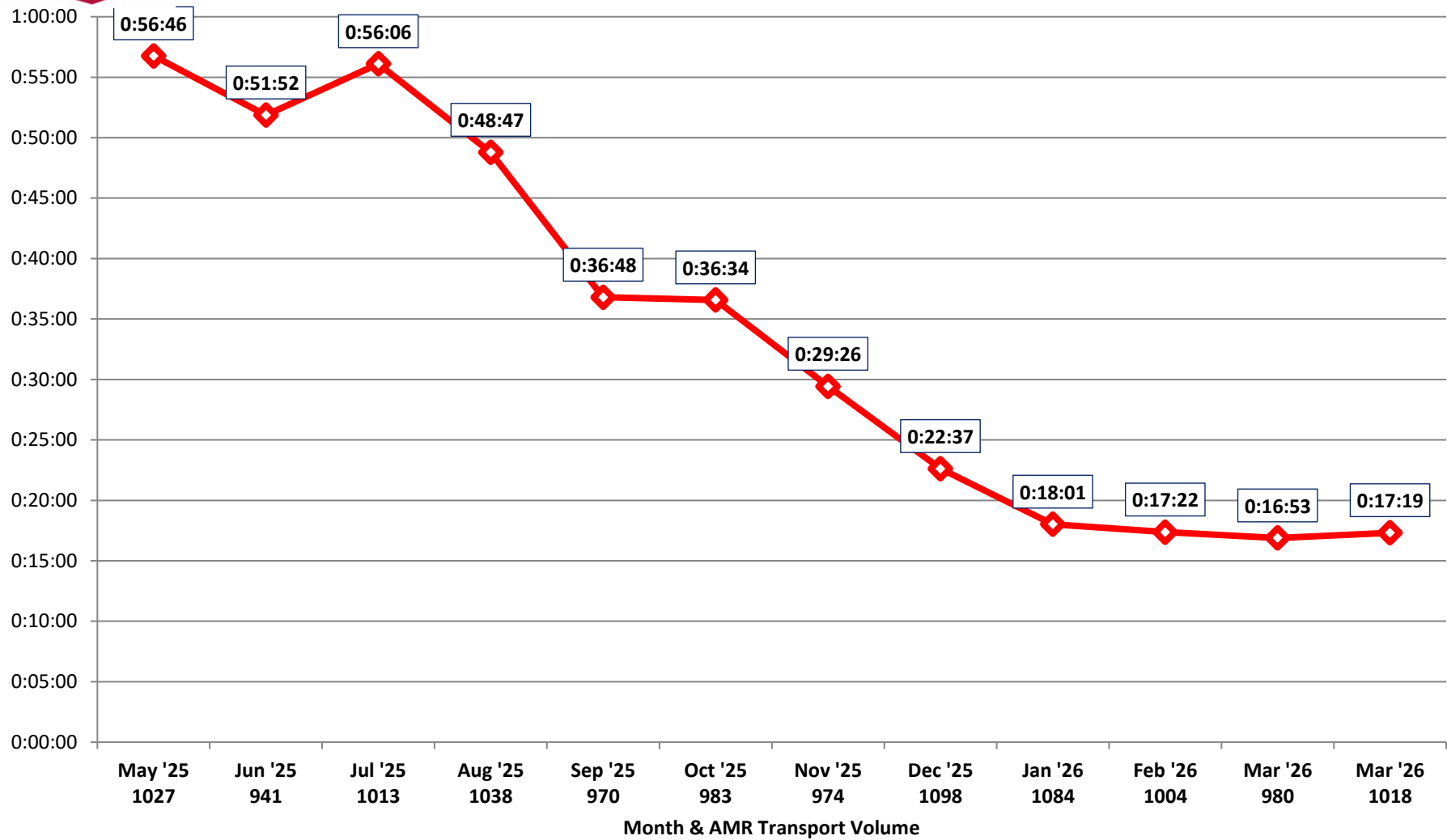
Patient Transfer of Care Times by Facility (90th Percentile)

John Muir - Walnut Creek

May 2025 - April 2026

12,130 Total Transports (1011 per Month)

Source: AMR MEDS (ePCR Database)





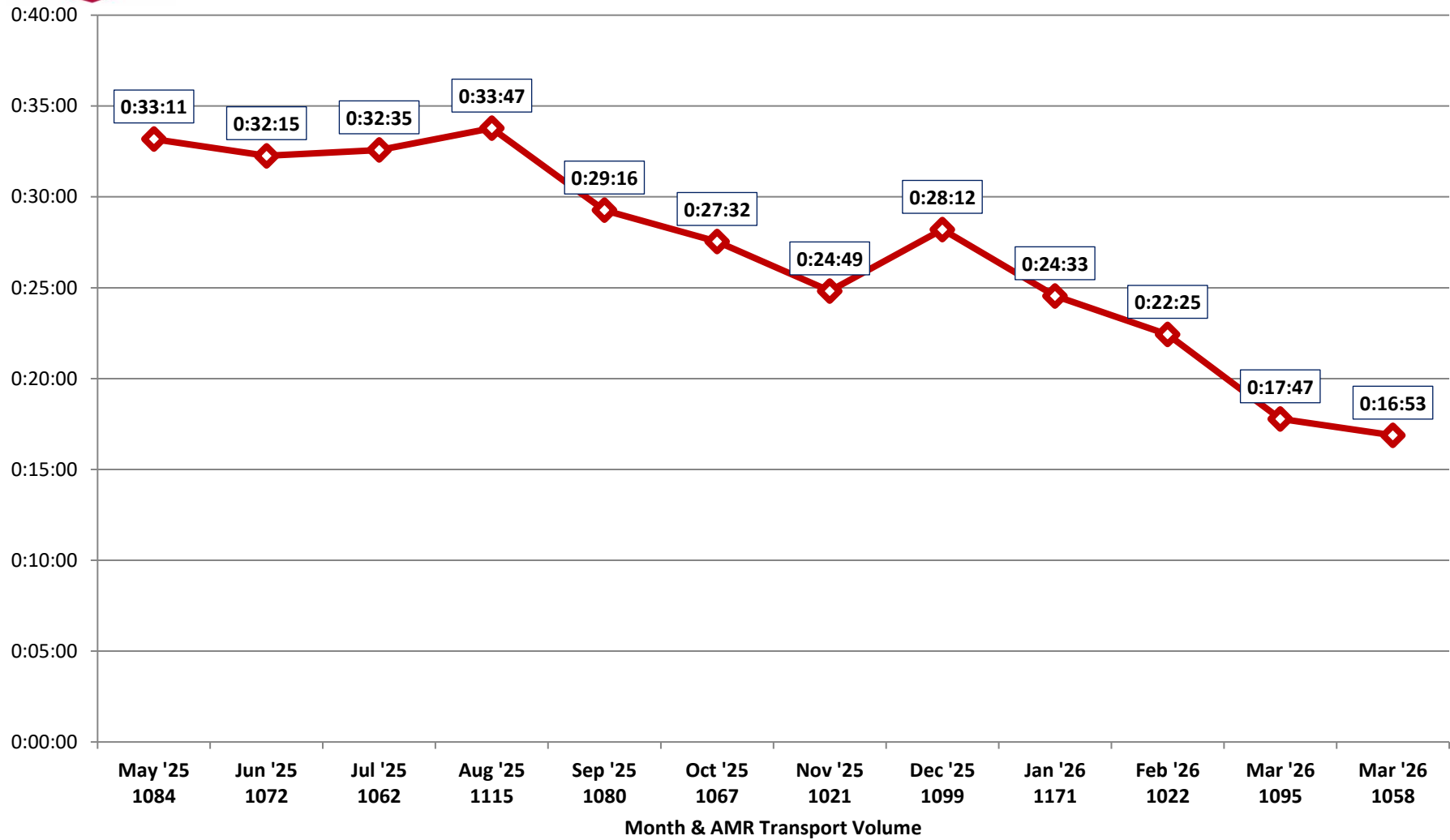
Patient Transfer of Care Times by Facility (90th Percentile)

John Muir - Concord

May 2025 - April 2026

12,946 Total Transports (1079 per Month)

Source: AMR MEDS (ePCR Database)





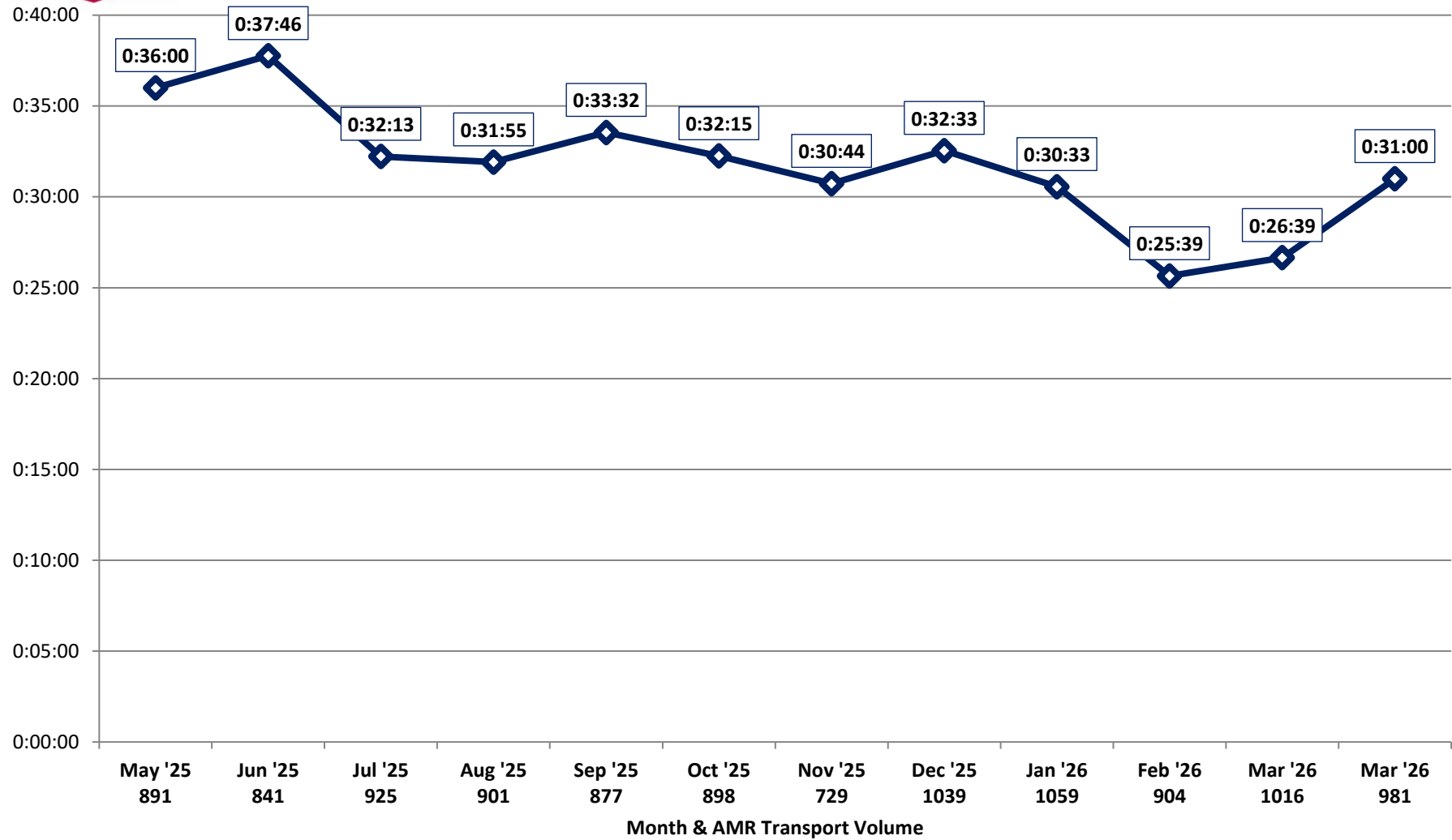
Patient Transfer of Care Times by Facility (90th Percentile)

Kaiser - Antioch

May 2025 - April 2026

11,061 Total Transports (922 per Month)

Source: AMR MEDS (ePCR Database)





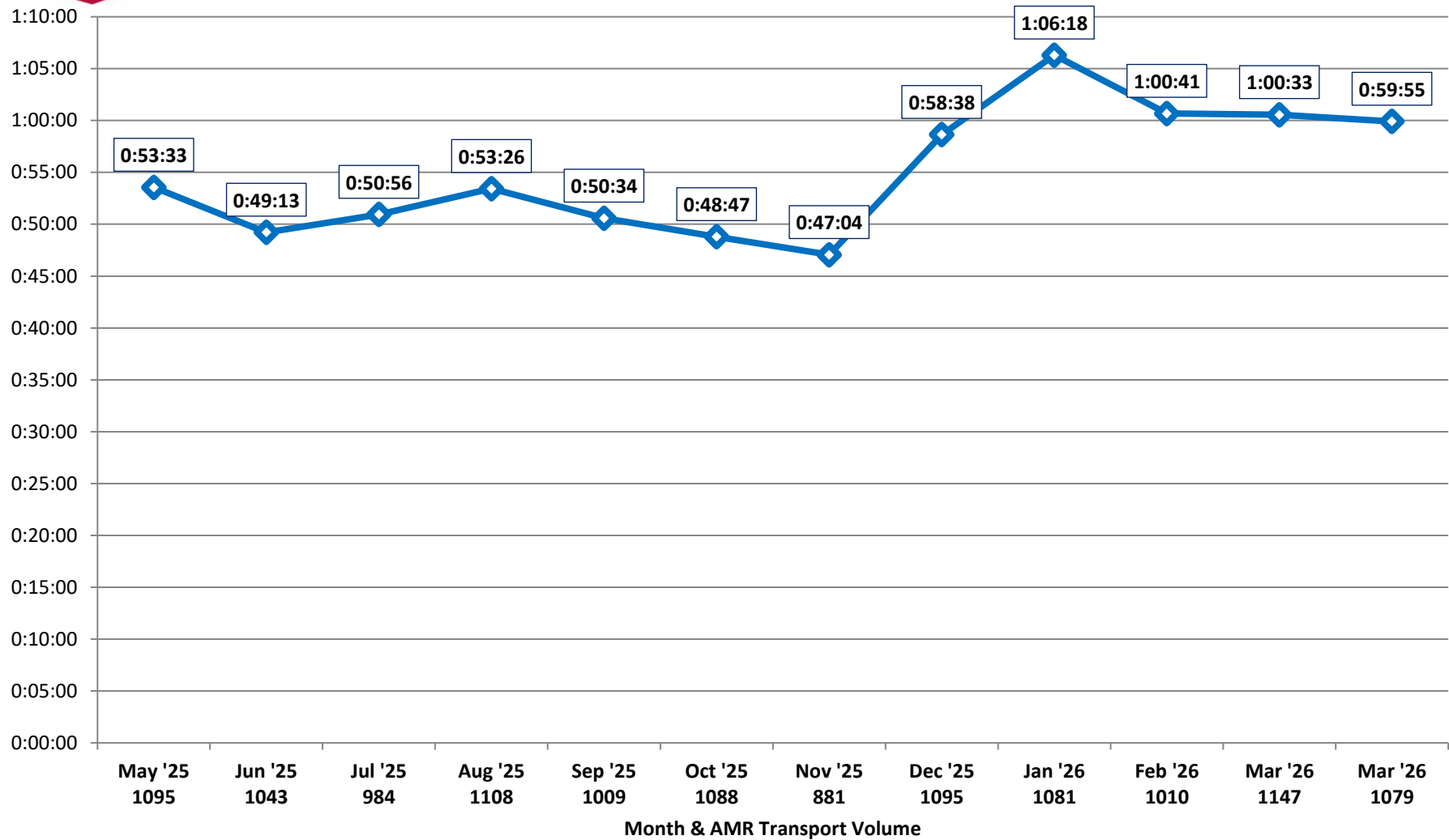
Patient Transfer of Care Times by Facility (90th Percentile)

Kaiser - Richmond

May 2025 - April 2026

12,620 Total Transports (1,052 per Month)

Source: AMR MEDS (ePCR Database)





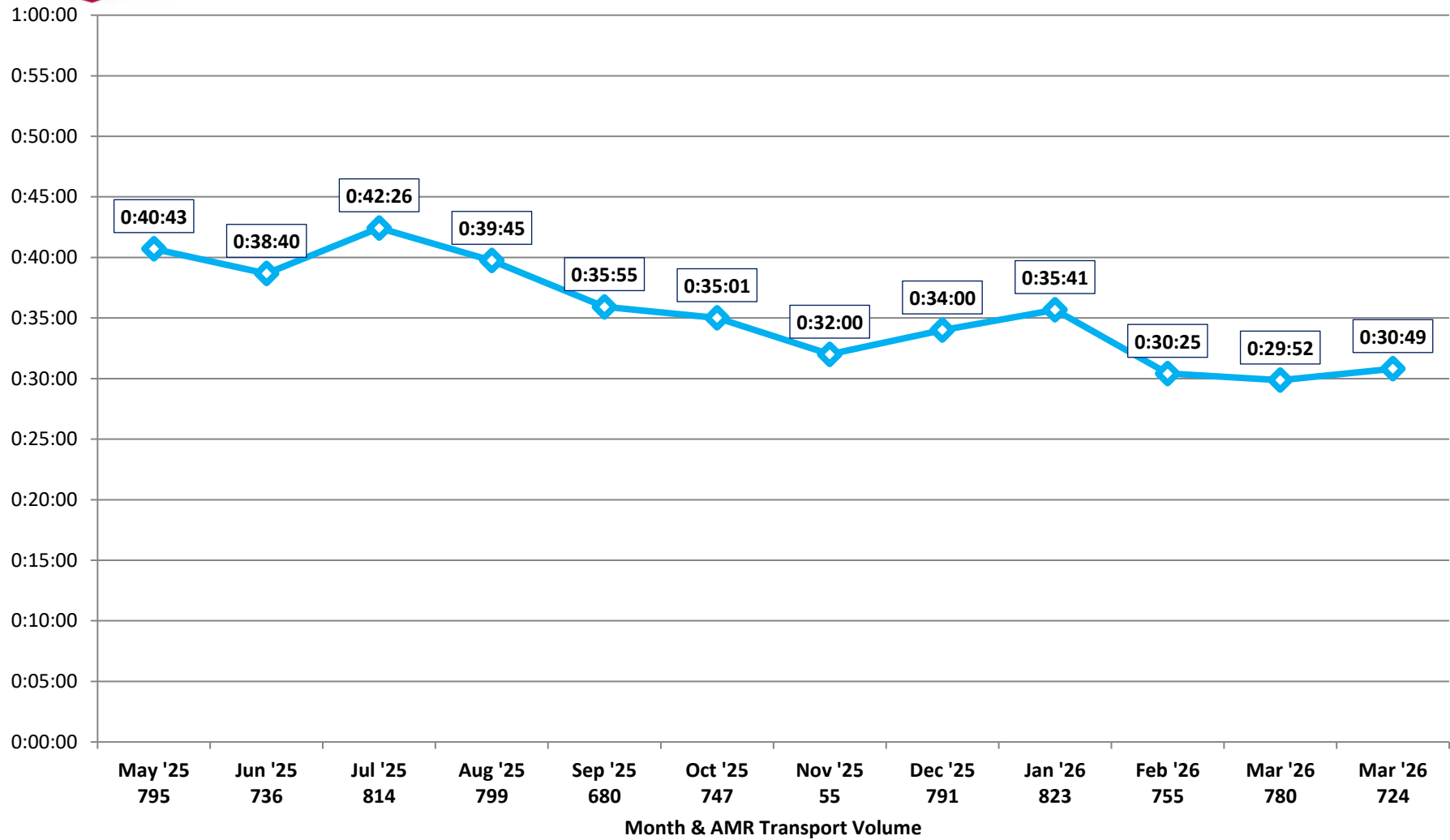
Patient Transfer of Care Times by Facility (90th Percentile)

Kaiser - Walnut Creek

May 2025 - April 2026

8,499 Total Transports (708 per Month)

Source: AMR MEDS (ePCR Database)





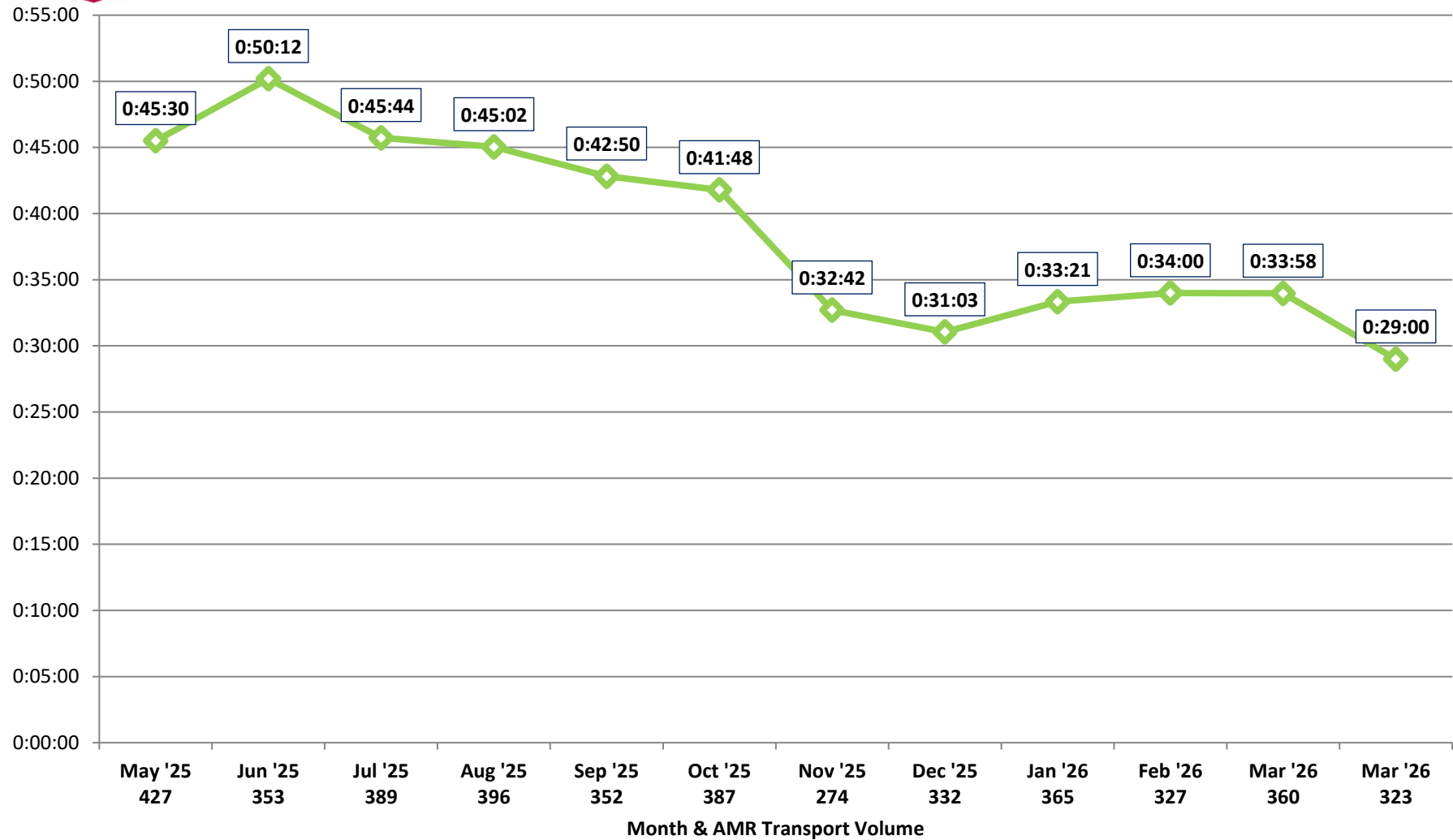
Patient Transfer of Care Times by Facility (90th Percentile)

Contra Costa Regional Medical Center

May 2025 - April 2026

4,285 Total Transports (357 per Month)

Source: AMR MEDS (ePCR Database)





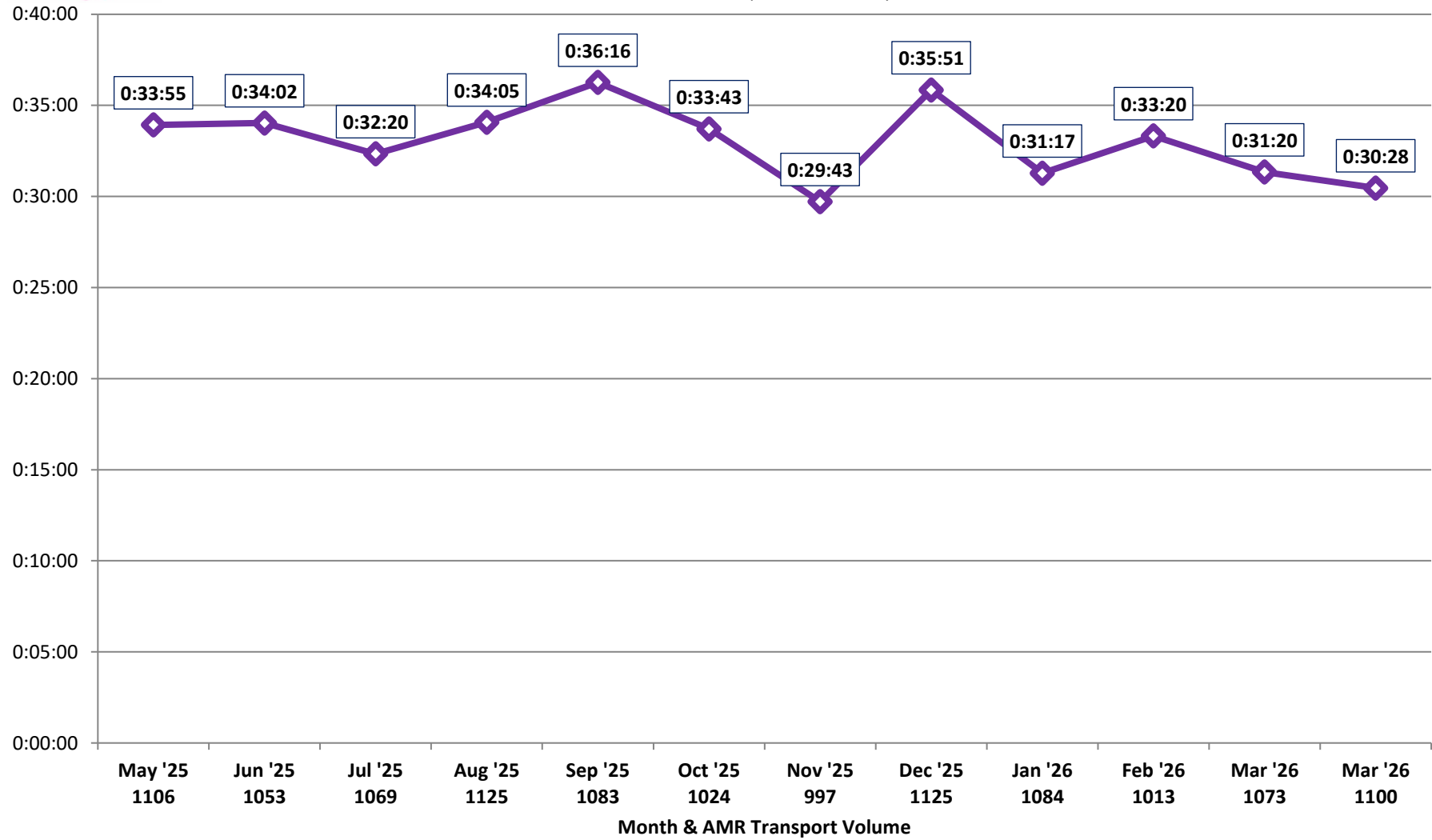
Patient Transfer of Care Times by Facility (90th Percentile)

Sutter Delta Medical Center

May 2025 - April 2026

12,852 Total Transports (1071 per Month)

Source: AMR MEDS (ePCR Database)





Patient Transfer of Care Times by Facility (90th Percentile)

CCRMC - PES

May 2025 - April 2026

4,810 Total Transports (398 per Month)

Source: AMR MEDS (ePCR Database)

