

A- EL SOBRANTE SHOPPING CENTER
 B- TRACT 2148 M.B. 59-16
 POR. LOT 127 SAN PABLO RANCHO
 C- POR. LOT 81, SANTA RITA ACRES NO.2
 D-1968 ROLL TRACT 3186 M.B.117-41

P.B.
430

CDLP25-02031
Project Site

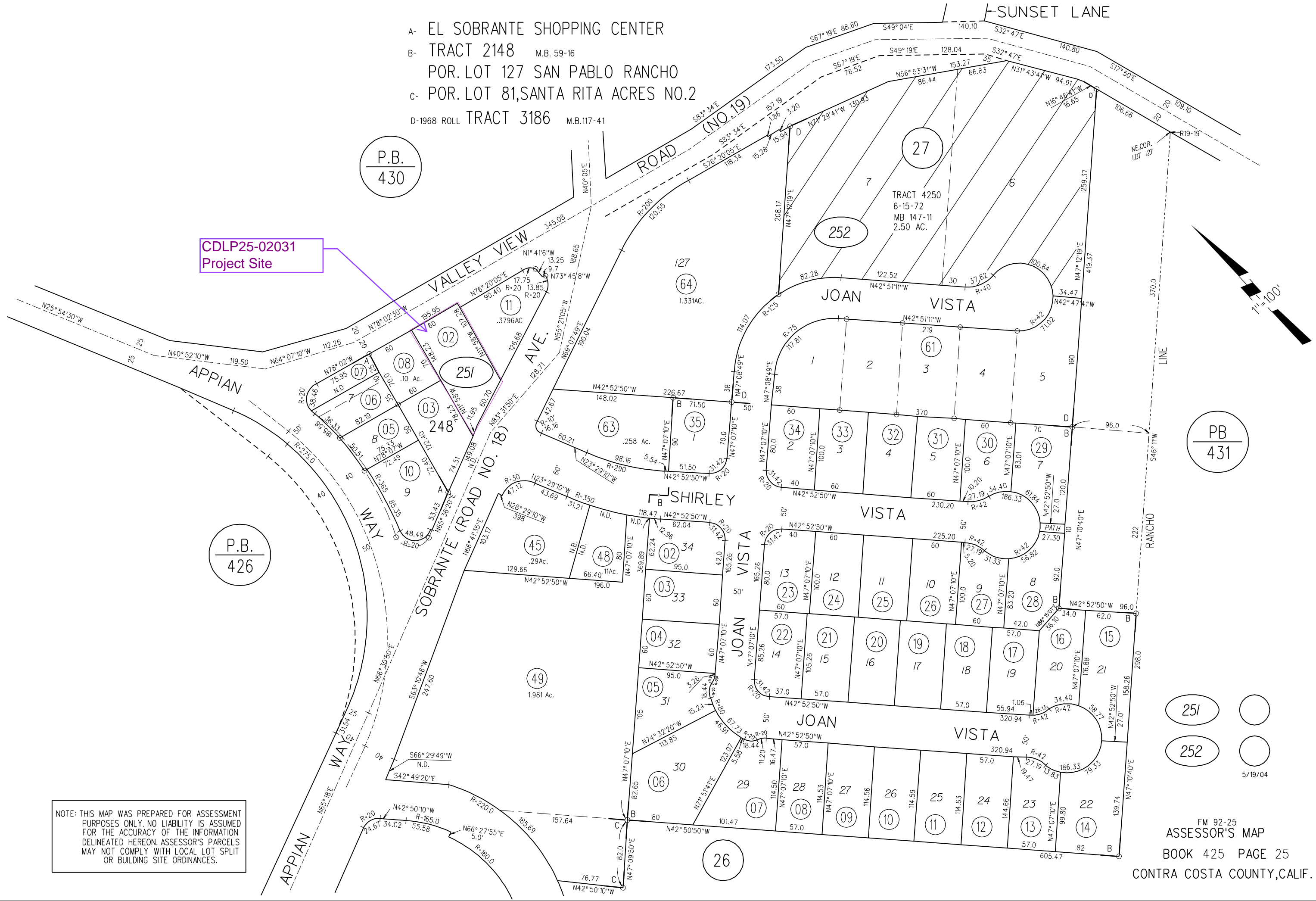
P.B.
426

PB
431

251
252
5/19/04

NOTE: THIS MAP WAS PREPARED FOR ASSESSMENT PURPOSES ONLY. NO LIABILITY IS ASSUMED FOR THE ACCURACY OF THE INFORMATION DELINEATED HEREON. ASSESSOR'S PARCELS MAY NOT COMPLY WITH LOCAL LOT SPLIT OR BUILDING SITE ORDINANCES.

FM 92-25
ASSESSOR'S MAP
BOOK 425 PAGE 25
CONTRA COSTA COUNTY, CALIF.



General Plan - Mixed-Use Low Density



Map Legend

County Border

Assessment
Parcels

Planning Layers
(DCD)

General Plan

MUL (Mixed-
Use Low) (10-30
du/na) (1.0 FAR)

Unincorporated

Board of
 Supervisors'
Districts

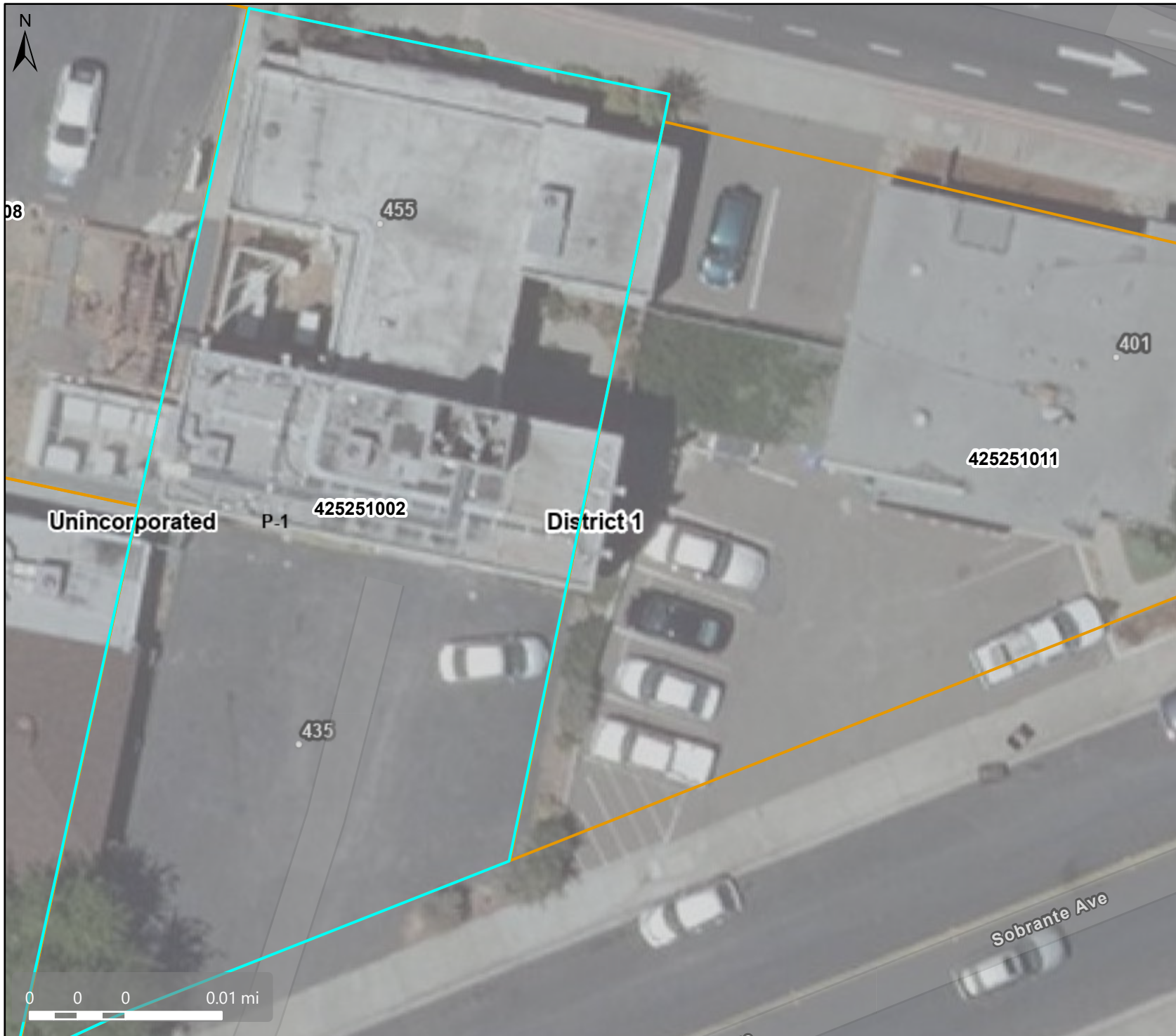
Base Data

Address Points

This map is a user generated, static output from an internet mapping application and is intended for reference use only. Data layers that appear on this map may or may not be accurate, current, or otherwise reliable.
THIS MAP IS NOT TO BE USED FOR NAVIGATION.
CCMap is maintained by Contra Costa County Department of Information Technology, County GIS. Data layers contained within the CCMap application are provided by various Contra Costa County Departments. Please direct all data inquiries to the appropriate department.

Spatial Reference
PCS: WGS 1984 Web Mercator Auxiliary Sphere
Datum: WGS 1984

Zoning - P-1 Planned Unit District



Map Legend

- County Border
- Assessment Parcels
- Planning Layers (DCD)**
- Zoning**
- ZONE_OVER**
 - P-1 (Planned Unit)
 - Unincorporated
 - Board of Supervisors' Districts
- Base Data**
 - Address Points

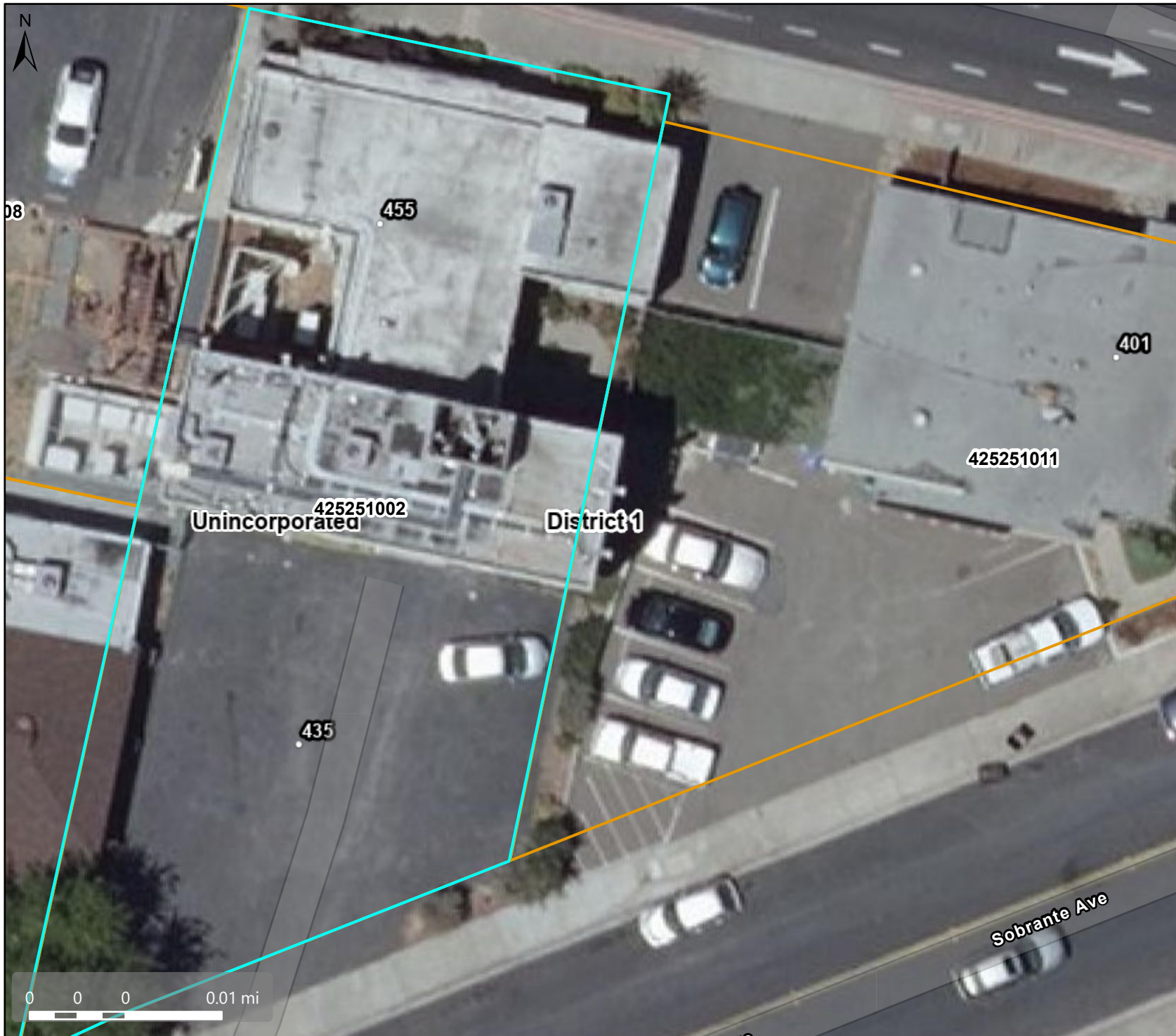
This map is a user generated, static output from an internet mapping application and is intended for reference use only. Data layers that appear on this map may or may not be accurate, current, or otherwise reliable.

THIS MAP IS NOT TO BE USED FOR NAVIGATION.

CCMap is maintained by Contra Costa County Department of Information Technology, County GIS. Data layers contained within the CCMap application are provided by various Contra Costa County Departments. Please direct all data inquiries to the appropriate department.

Spatial Reference
PCS: WGS 1984 Web Mercator Auxiliary Sphere
Datum: WGS 1984

Aerial



Map Legend

- County Border
- Assessment Parcels
- Planning Layers (DCD)**
 - Unincorporated
 - Board of Supervisors' Districts
- Base Data**
 - Address Points

This map is a user generated, static output from an internet mapping application and is intended for reference use only. Data layers that appear on this map may or may not be accurate, current, or otherwise reliable.

THIS MAP IS NOT TO BE USED FOR NAVIGATION.

CCMap is maintained by Contra Costa County Department of Information Technology, County GIS. Data layers contained within the CCMap application are provided by various Contra Costa County Departments. Please direct all data inquiries to the appropriate department.

Spatial Reference
PCS: WGS 1984 Web Mercator Auxiliary Sphere
Datum: WGS 1984