

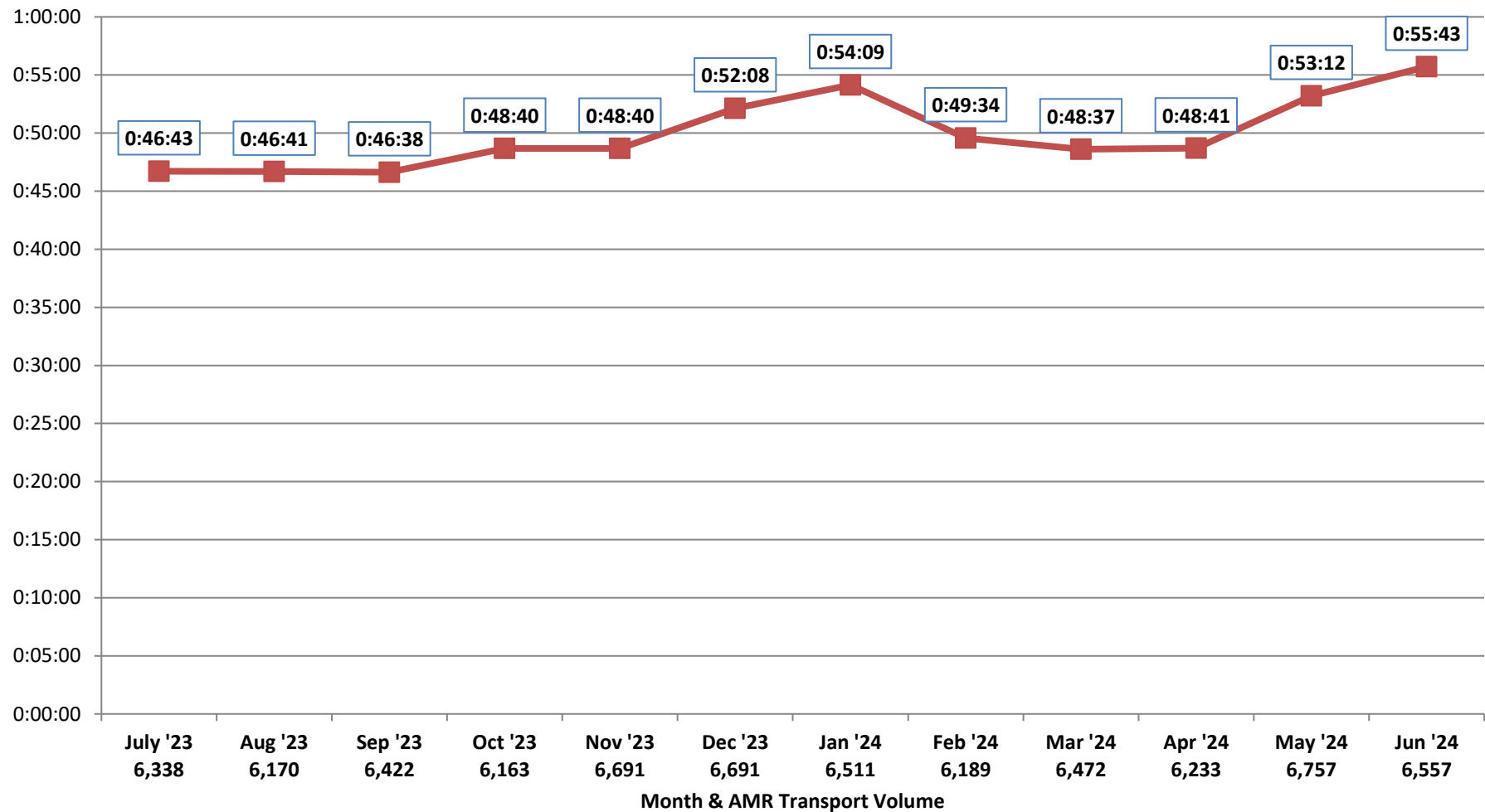


Patient Transfer of Care Times by Facility 90th PERCENTILE OF ALL FACILITIES

July 2023 - June 2024

76,811 Transports (6,401 per Month)

Source: AMR MEDS (ePCR Database)



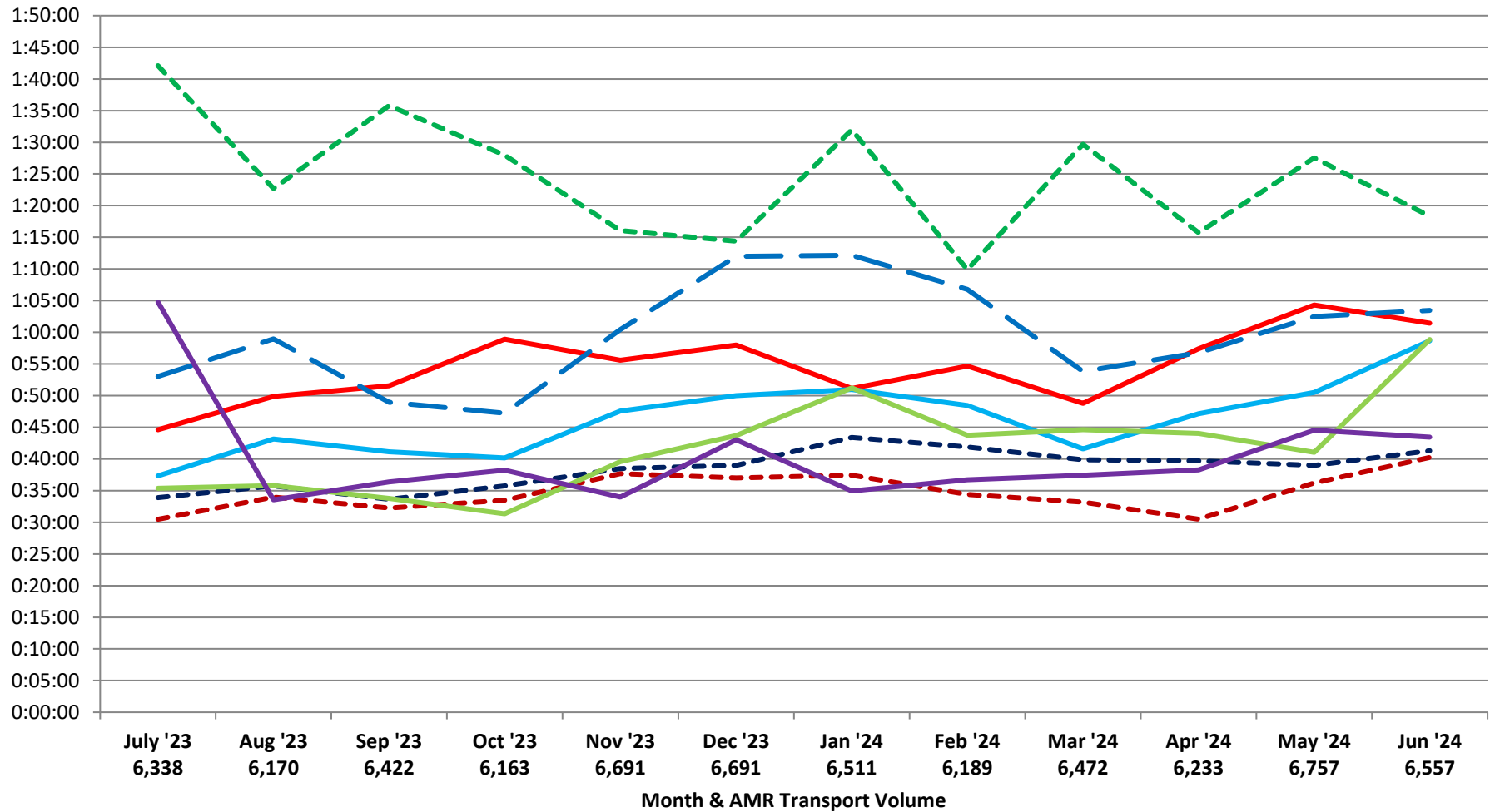


Patient Transfer of Care Times by Facility (90th Percentile)

July 2023 - June 2024

Source: AMR MEDS (ePCR Database)

- - - John Muir - Concord
- John Muir - Walnut Creek
- Kaiser Hospital - Antioch
- Kaiser Hospital - Richmond
- - - Kaiser Hospital - Walnut Creek
- Contra Costa Regional Medical Center
- Sutter Delta Medical Center
- - - PES - Contra Costa Regional Medical Center





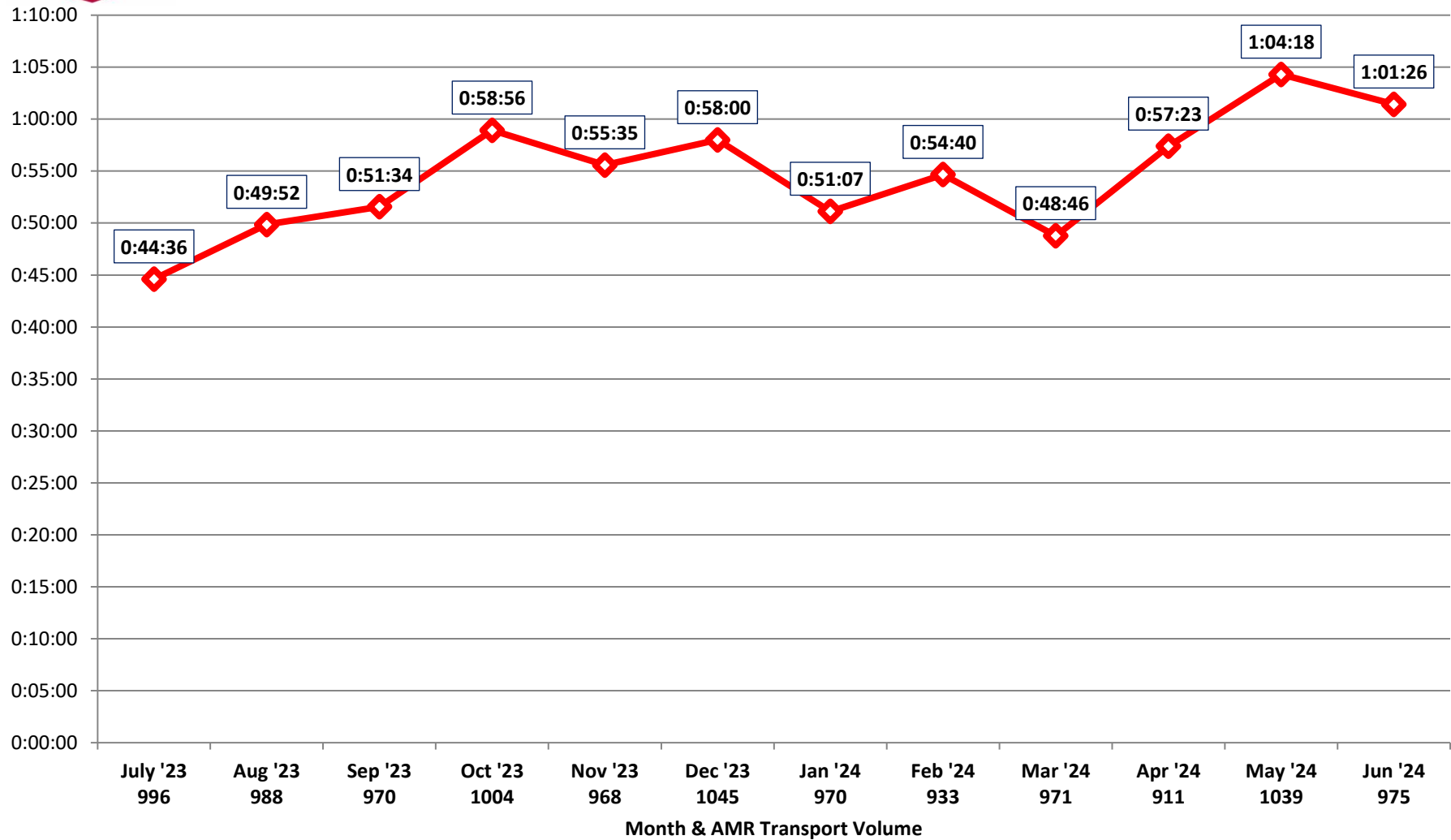
Patient Transfer of Care Times by Facility (90th Percentile)

John Muir - Walnut Creek

July 2023 - June 2024

11,770 Total Transports (981 per Month)

Source: AMR MEDS (ePCR Database)





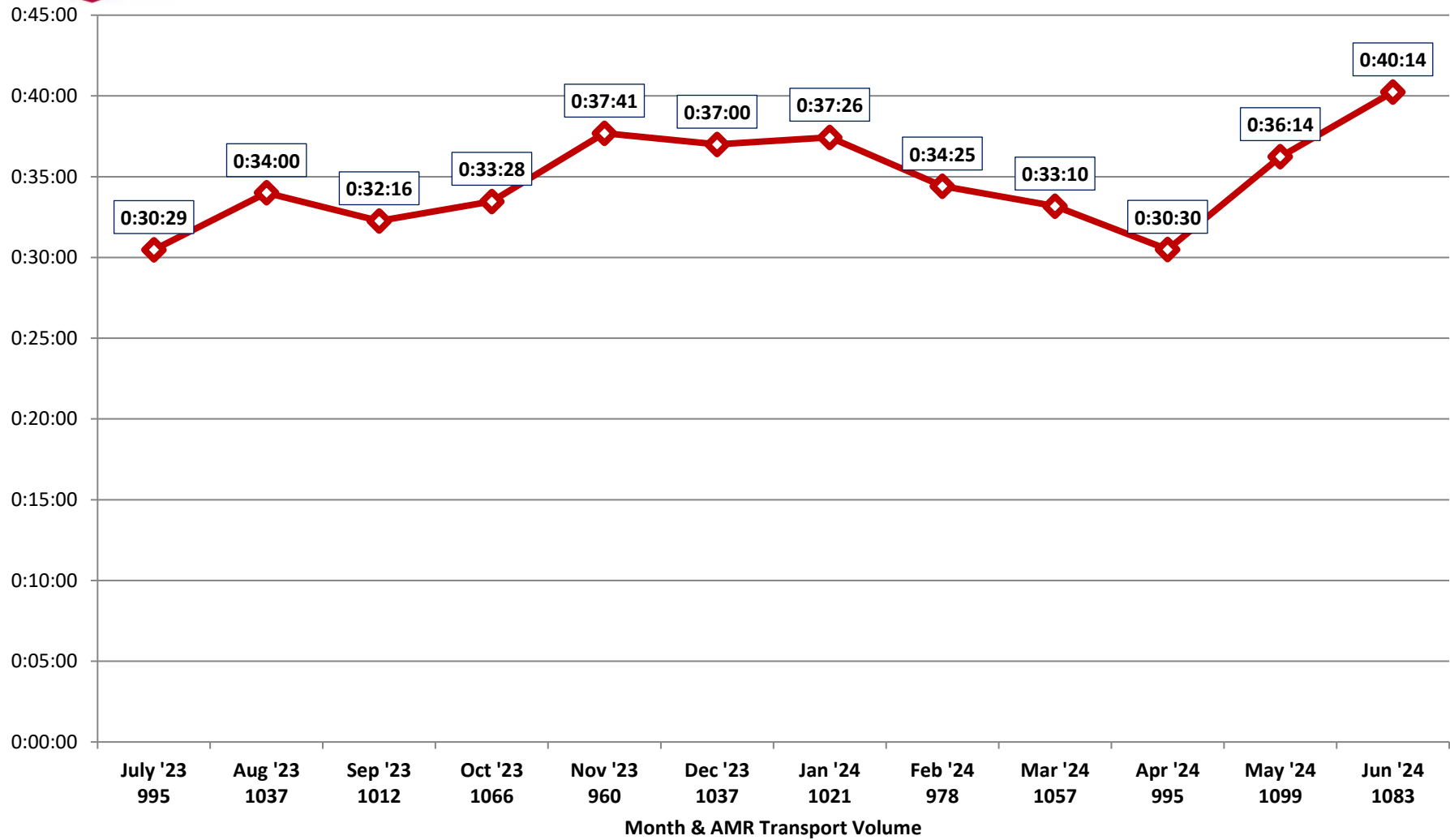
Patient Transfer of Care Times by Facility (90th Percentile)

John Muir - Concord

July 2023 - June 2024

12,340 Total Transports (1028 per Month)

Source: AMR MEDS (ePCR Database)





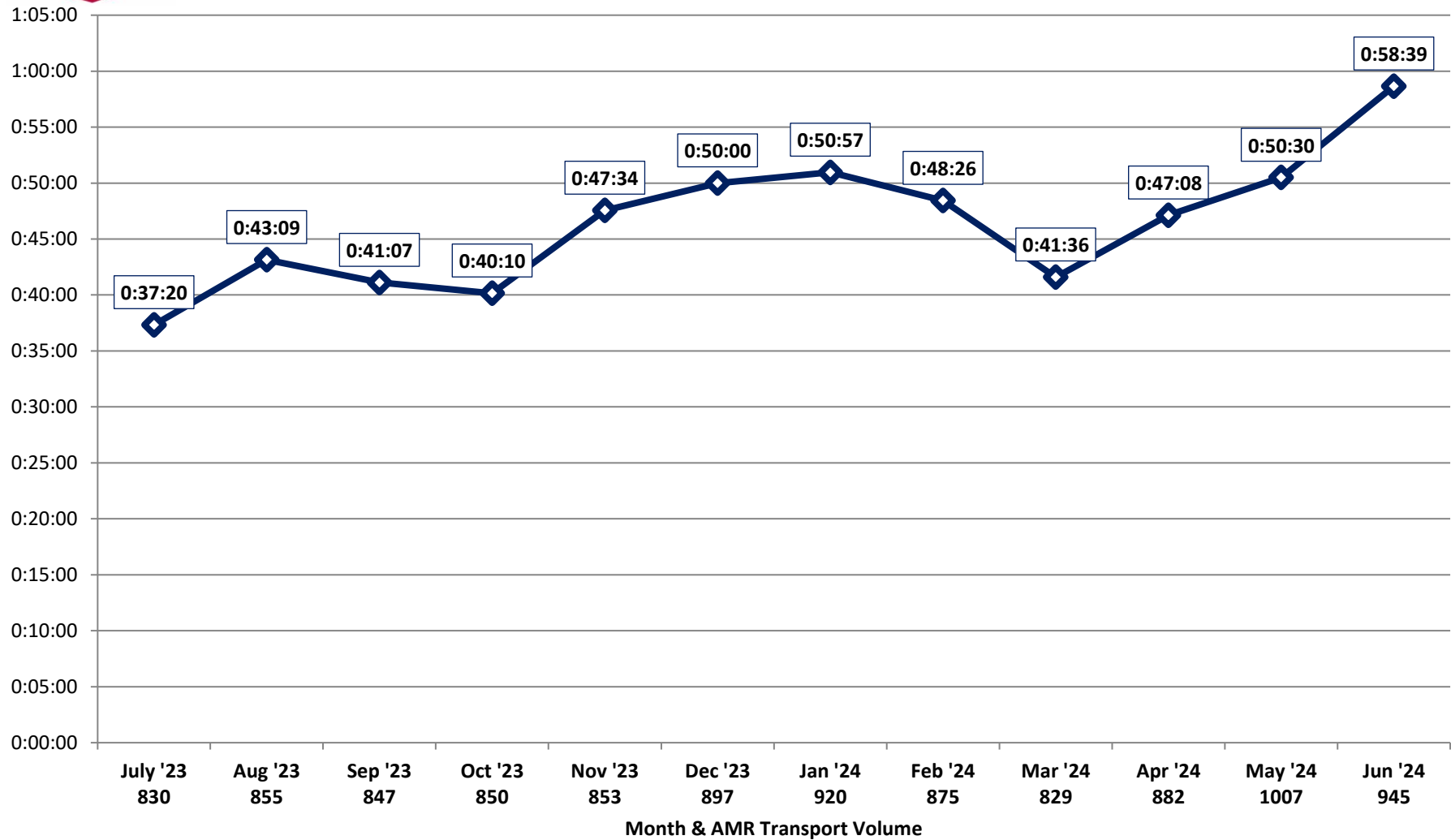
Patient Transfer of Care Times by Facility (90th Percentile)

Kaiser - Antioch

July 2023 - June 2024

10,590 Total Transports (883 per Month)

Source: AMR MEDS (ePCR Database)





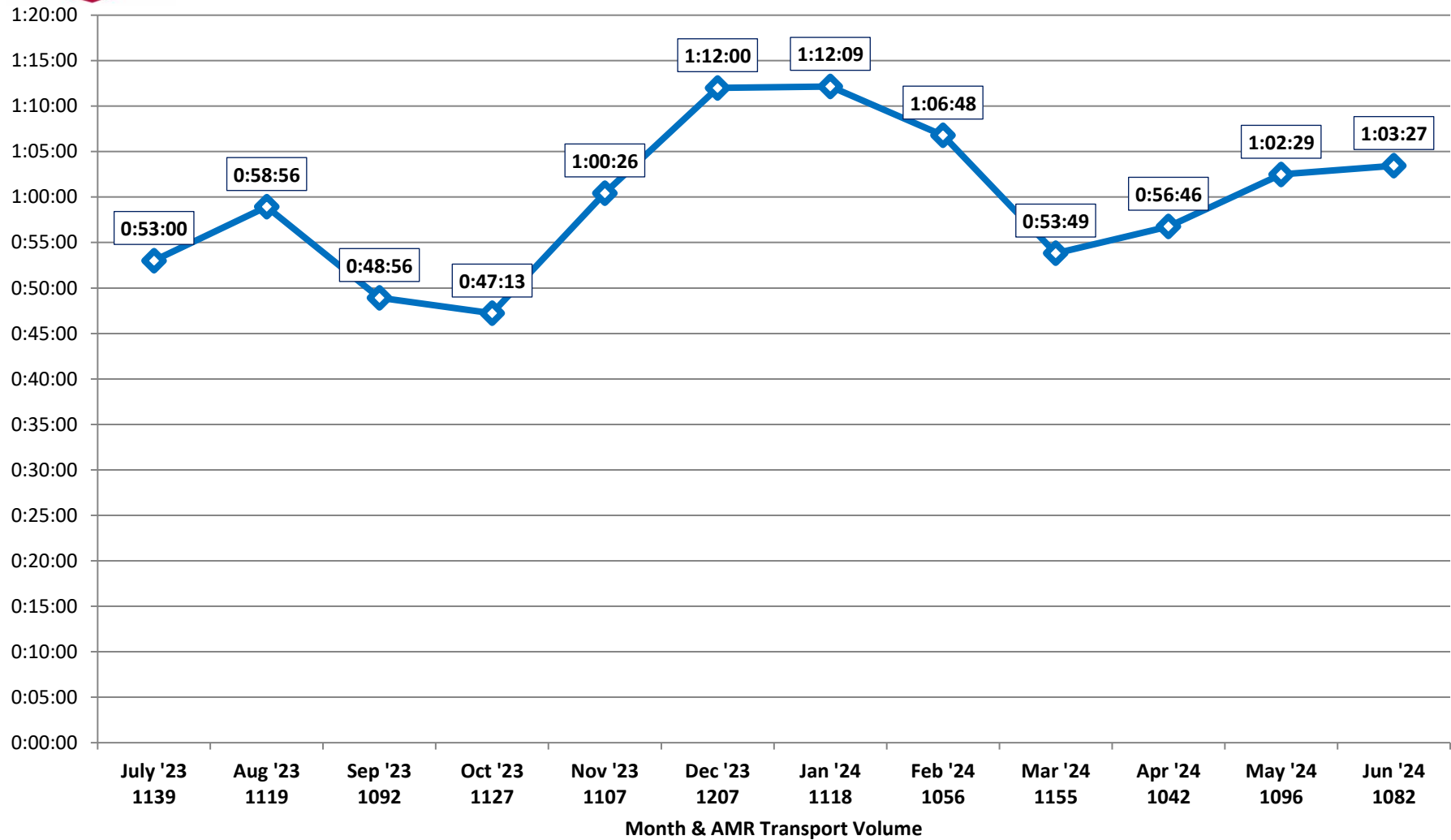
Patient Transfer of Care Times by Facility (90th Percentile)

Kaiser - Richmond

July 2023 - June 2024

13,340 Total Transports (1112 per Month)

Source: AMR MEDS (ePCR Database)





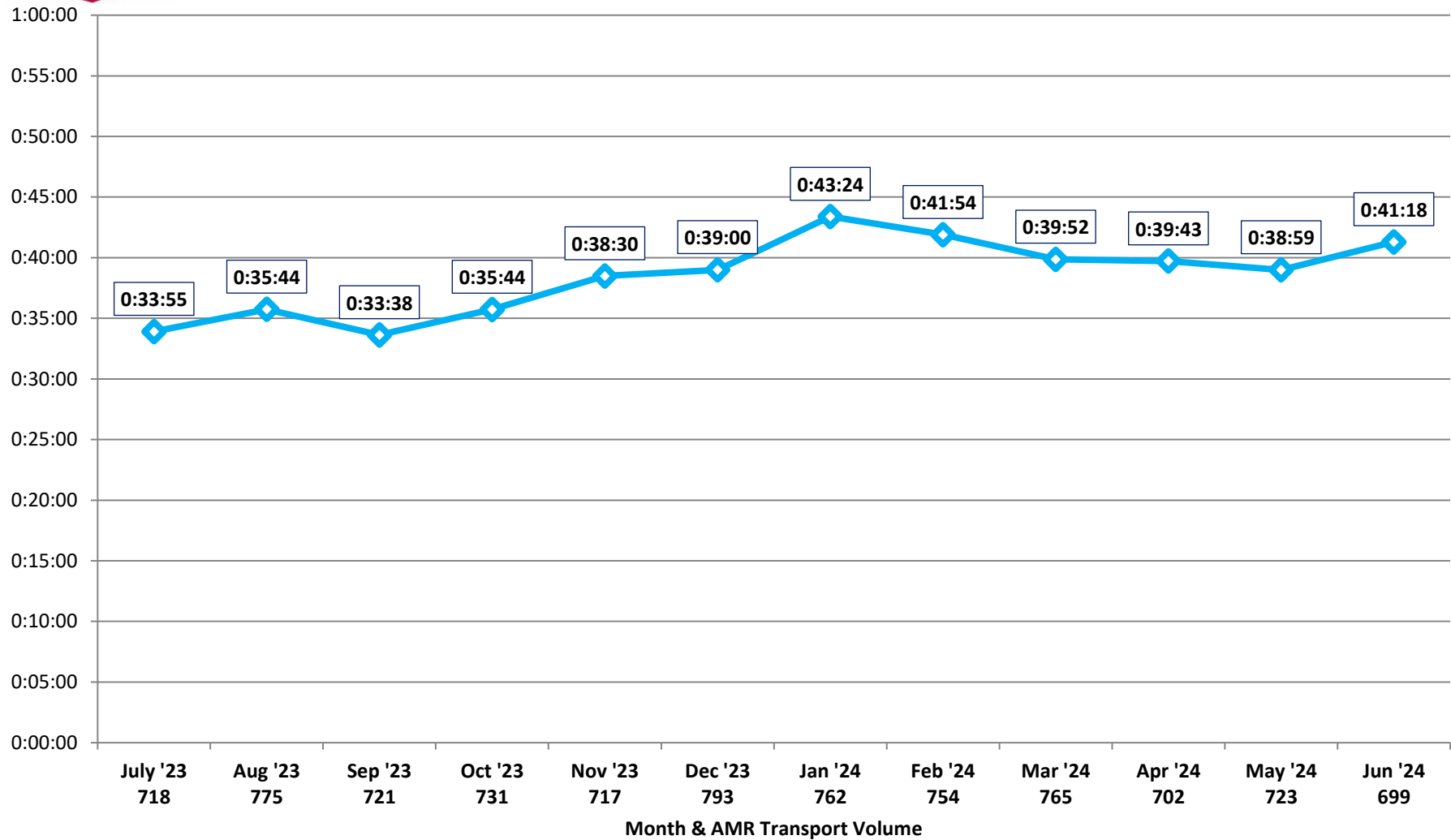
Patient Transfer of Care Times by Facility (90th Percentile)

Kaiser - Walnut Creek

July 2023 - June 2024

8,860 Total Transports (738 per Month)

Source: AMR MEDS (ePCR Database)





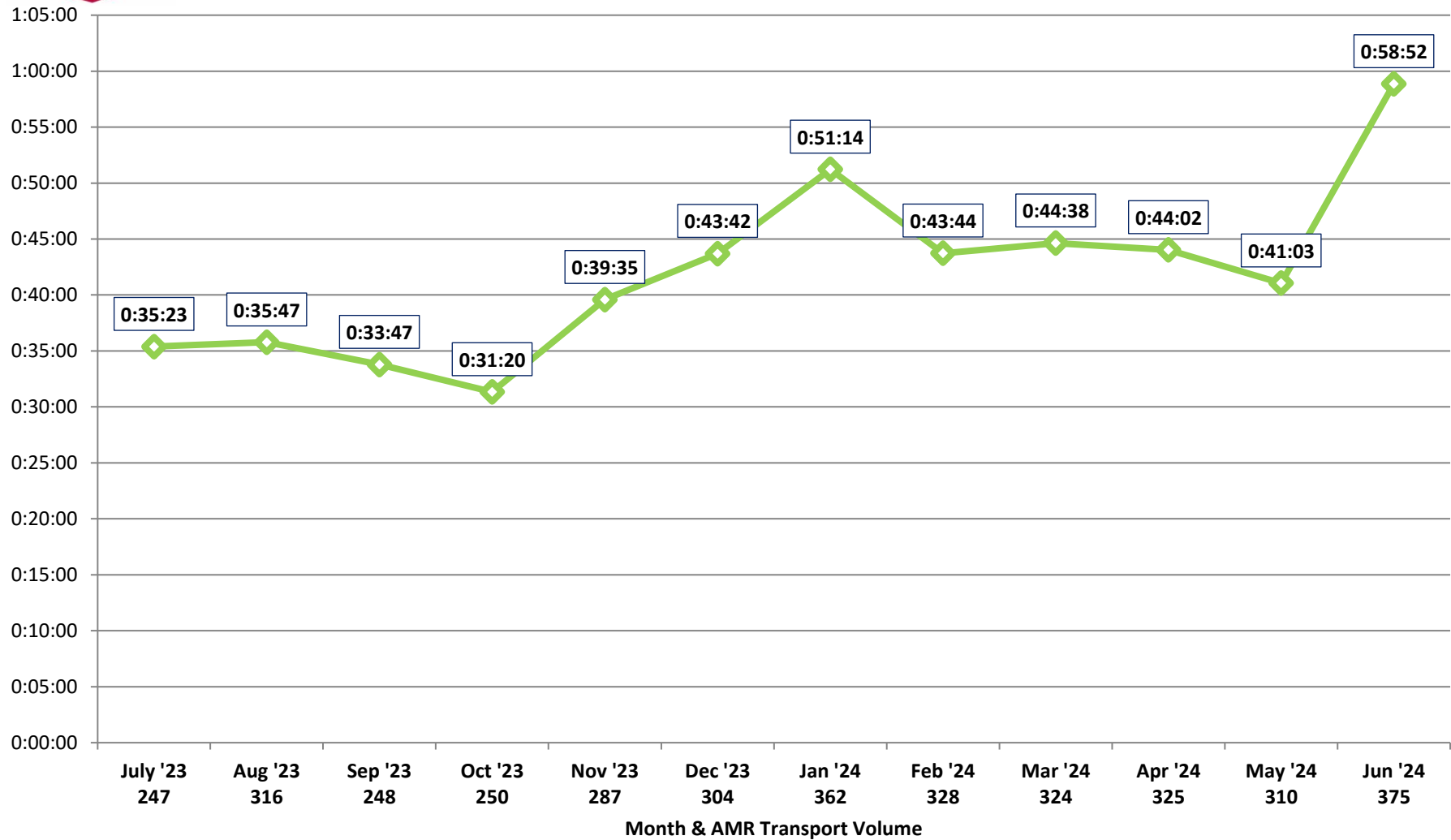
Patient Transfer of Care Times by Facility (90th Percentile)

Contra Costa Regional Medical Center

July 2023 - June 2024

3,676 Total Transports (306 per Month)

Source: AMR MEDS (ePCR Database)





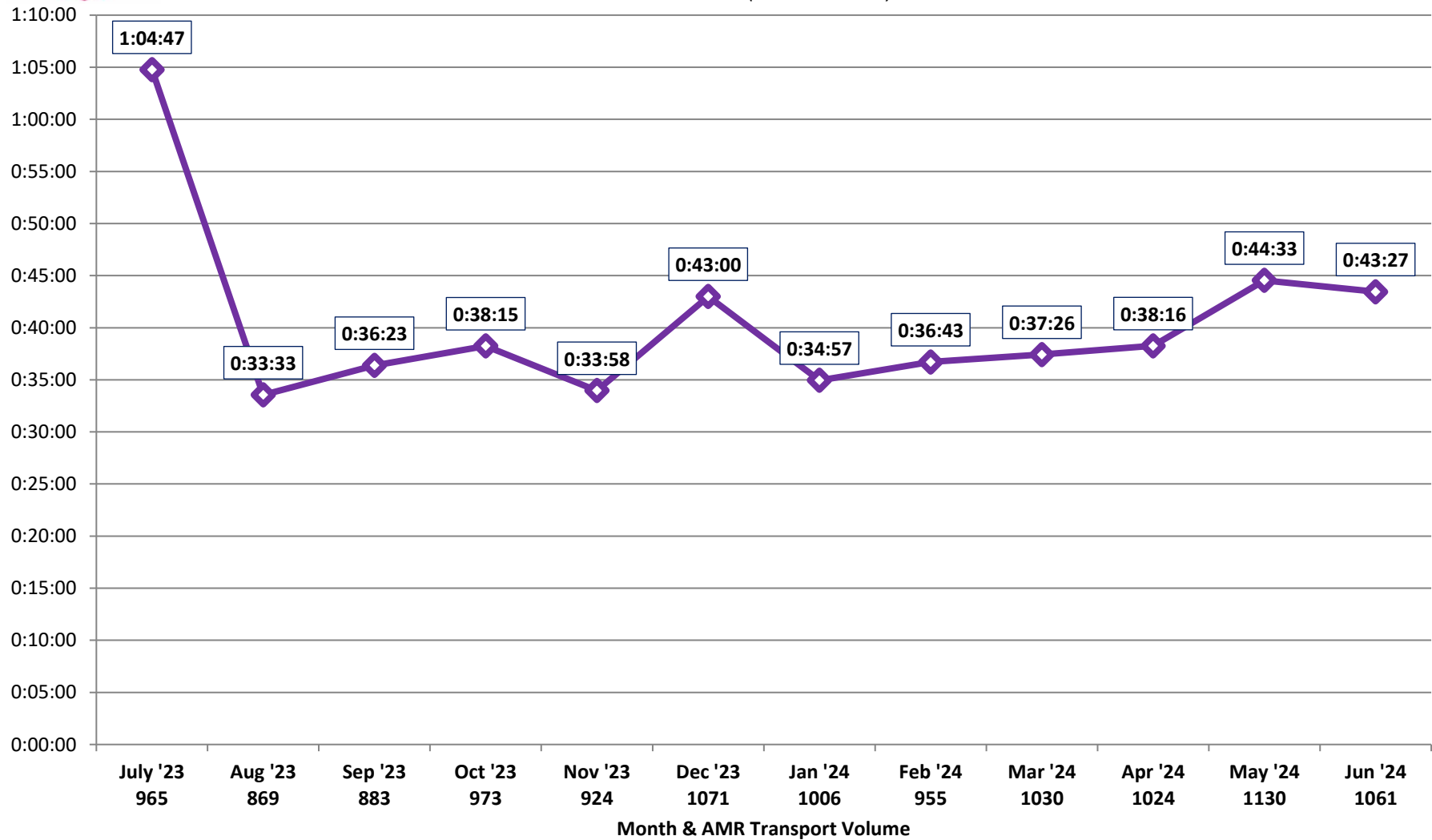
Patient Transfer of Care Times by Facility (90th Percentile)

Sutter Delta Medical Center

July 2023 - June 2024

11,891 Total Transports (991 per Month)

Source: AMR MEDS (ePCR Database)





Patient Transfer of Care Times by Facility (90th Percentile)

CCRMC - PES

July 2023 - June 2024

4,344 Total Transports (362 per Month)

Source: AMR MEDS (ePCR Database)

