



at&t

Your world. Delivered.

RECEIVED on 02/16/2024 **CDLP24-02006**
By Contra Costa County
Department of Conservation and Development



125 KLUG CIRCLE
CORONA, CALIFORNIA 92880

FA CODE: FA # 10070274

DRAWN BY: J.C

JOB #: 30097

REV	DATE	DESCRIPTION
1	02/05/2024	100% CD'S - S&S
0	06/27/23	100% CD'S FOR REVIEW
E	04/24/23	95% CD'S UPDATE-RAD CHANGE
D	01/30/23	95% CD'S UPDATE
C	04/28/22	95% CD'S UPDATE
B	03/01/22	90% CD'S UPDATE
A	01/27/22	90% CD'S FOR REVIEW



Digitally signed by Joseph Russell King
Date: 2024.02.05 16:59:45 -05'00'

IT IS A VIOLATION OF LAW FOR ANY PERSON, UNLESS THEY ARE ACTING UNDER THE DIRECTION OF A LICENSED PROFESSIONAL ENGINEER, TO ALTER THIS DOCUMENT.

CCL04753
BLACKHAWK
CORNER OF BLACKHAWK AND EAGLES NEST
DANVILLE, CALIFORNIA 94506
FA NUMBER
10070274

SHEET TITLE

TITLE SHEET

SHEET NUMBER

T-1

CCL04753 - 2022 5G NR RADIO

PA#: MRSFR085447 - 5G NR ACTIVATION

PA#: MRSFR086839 PTN#: 3701A10X7J - 4TXRX ANTENNA RETROFIT

PA#: MRSFR086137 PTN#: 3701A10Y2V - BBU RECONFIGURATION

PA#: MRSFR086124 PTN#: 3701A10YRL - 5G NR 1SR CBAND

PA#: MRSFR086893 PTN#: 3701A10YK3 - 5G NR 1SR CBAND

FA#: 10070274

BLACKHAWK

**CORNER OF BLACKHAWK AND EAGLES NEST
DANVILLE, CALIFORNIA 94506
MODIFICATION OF TELECOMMUNICATION SITE**

APPLICABLE CODES

ALL WORK SHALL COMPLY WITH THE FOLLOWING APPLICABLE CODES:

2022 CALIFORNIA BUILDING CODE
2022 CALIFORNIA GREEN BUILDING STANDARDS CODE
2022 CALIFORNIA ELECTRICAL CODE
2022 CALIFORNIA MECHANICAL CODE
2022 CALIFORNIA PLUMBING CODE
2022 CALIFORNIA FIRE CODE
2022 CALIFORNIA ENERGY CODE

IN THE EVENT OF CONFLICT, THE MOST RESTRICTIVE CODE SHALL PREVAIL

GENERAL NOTES

THE FACILITY IS UNMANNED AND NOT FOR HUMAN HABITATION. HANDICAPPED ACCESS REQUIREMENTS ARE NOT REQUIRED. IN ACCORDANCE WITH THE 2022 CALIFORNIA BUILDING CODE, A TECHNICIAN WILL VISIT THE SITE AS REQUIRED FOR ROUTINE MAINTENANCE. THE PROJECT WILL NOT RESULT IN ANY SIGNIFICANT DISTURBANCE OR EFFECT ON DRAINAGE; NO SANITARY SEWER SERVICE, POTABLE WATER, OR TRASH DISPOSAL IS REQUIRED AND NO COMMERCIAL SIGNAGE IS PROPOSED.

SITE INFORMATION

APPLICANT: AT&T MOBILITY
5001 EXECUTIVE PARKWAY
SAN RAMON, CA 94583

PROPERTY OWNER: BLACKHAWK HOMEOWNERS ASSOCIATION
4125 BLACKHAWK PLAZA CIRCLE
DANVILLE, CALIFORNIA 94506

STRUCTURE TYPE: LATTICE TOWER

TOWER HEIGHT: 131'-0"

ASSESSORS PARCEL NUMBER: 203-760-026

LATITUDE: 37° 49' 02.74" N 37.81743°

LONGITUDE: 121° 54' 10.40" W -121.90289°

LAT/LONG TYPE: NAD-83

ELEVATION: ±902.2' AMSL

EXISTING ZONING: P-1

PROPOSED PROJECT AREA: NO INCREASE IN S.F.

TYPE OF CONSTRUCTION: TYPE V-B

OCCUPANCY GROUP: U

JURISDICTION: CONTRA COSTA COUNTY

LOCATION MAP



DRIVING DIRECTIONS

- DIRECTIONS FROM: 5001 EXECUTIVE PARKWAY, SAN RAMON, CALIFORNIA 94583
- HEAD NORTH AND TURN RIGHT TOWARD EXECUTIVE PKWY. TURN RIGHT ONTO EXECUTIVE PKWY. (0.4 MILES)
 - TURN LEFT ONTO CAMINO RAMON. (0.3 MILES)
 - TURN RIGHT ONTO NORRIS CANYON RD. (0.3 MILES)
 - USE THE LEFT 2 LANES TO TURN LEFT ONTO ALCOSTA BLVD. (0.4 MILES)
 - USE THE RIGHT 2 LANES TO TURN RIGHT ONTO CROW CANYON RD. (3.3 MILES)
 - CONTINUE STRAIGHT PAST CITI ONTO BLACKHAWK RD. (1 MILES)
 - TURN RIGHT ONTO BLACKHAWK DR. (1.2 MILES)
 - TURN LEFT ONTO WILD OAK CT. DESTINATION WILL BE ON THE RIGHT. (279 FEET).

PROJECT DESCRIPTION

AT&T MOBILITY PROPOSES TO MODIFY AN EXISTING UNMANNED WIRELESS COMMUNICATIONS FACILITY. THIS MODIFICATION WILL CONSIST OF THE FOLLOWING:

- LATTICE TOWER - ABOVE CONDUCTOR:**
- REMOVE (6) EXISTING PANEL ANTENNAS AT POS. 1 AND 2 (2 PER SECTOR, 6 TOTAL)
 - REMOVE (6) EXISTING 1-5/8" US50 COAX MAINLINES
 - RELOCATE (3) EXISTING MOUNTING FRAMES FROM 124'-0" RAD TO 121'-10" RAD (TO BE DONE BY PG&E)
 - RELOCATE (3) EXISTING 4415 B25 FROM 124'-0" RAD TO 121'-10" RAD (1 PER SECTOR)
 - RELOCATE (3) EXISTING 4426 B66 FROM 124'-0" RAD TO 121'-10" RAD (1 PER SECTOR)
 - RELOCATE (2) EXISTING 4478 B14 FROM 124'-0" RAD TO 121'-10" RAD (1 PER SECTOR A & C)
 - INSTALL NEW FRAMES AT 128'-6" RAD-CENTER (TO BE DONE BY PG&E)
 - INSTALL (3) NEW PANEL ANTENNAS AT POS. 1 AT 128'-6" RAD-CENTER (1 PER SECTOR, 3 TOTAL)
 - INSTALL (6) NEW PANEL ANTENNAS AT AT POS. 2 AND 3 AT 121'-10" RAD-CENTER (2 PER SECTOR, 6 TOTAL)
 - INSTALL (3) NEW DIPLEXERS NEAR POS. 3 ANTENNA
- LATTICE TOWER - BELOW CONDUCTOR:**
- INSTALL (3) NEW B144796 H-FRAMES WITH (3) NEW B139409 AND (3) NEW B1709 BRACKETS AT 36'-0" RAD-CENTER ON B/C/D LEGS
 - INSTALL (3) NEW AIR6449 ANTENNAS AT 36'-0" RAD-CENTER @ NEW P4 (1 PER SECTOR, 3 TOTAL)
 - INSTALL (3) NEW AIR6419 ANTENNAS AT 36'-0" RAD-CENTER @ NEW P5 (1 PER SECTOR, 3 TOTAL)
 - INSTALL (1) NEW DCS SQUID ON (1) NEW B141415 MOUNT AT ±36'-0" RAD-CENTER ON C LEG BEHIND AIR ANTENNAS
 - INSTALL (1) NEW B144796 H-FRAME WITH (1) NEW B139409 AND (1) NEW B1709 BRACKET AT 28'-0" RAD-CENTER FOR RADIOS ON C LEG
 - INSTALL (3) NEW 4478 B12'S AT 28'-0" RAD-CENTER
 - INSTALL (3) 6AWG TRUNKS
 - INSTALL (1) 24-PAIR FIBER TRUNK
- SHELTER WORK:**
- REMOVE (3) EXISTING RRS-B12 ON EXISTING H-FRAME (1 PER SECTOR, 3 TOTAL)
 - INSTALL (1) NEW DC12 ON EXISTING H-FRAME IN FOOTPRINT OF RRS-11 B12
 - INSTALL (1) NEW 155AH BATTERY STRING IN EXISTING BBU (5 STRINGS TOTAL)
 - INSTALL (4) NEW INFINITY -48 RECTIFIERS (8 RECTIFIERS TOTAL)
 - INSTALL (1) NEW 6673 IN FLX-21 PURCELL CABINET
 - FINAL (1) 5216 + (2) XMU + (1) 6630 (MM) + (1) 6673
- * WEED ABATEMENT/FIRE BREAK TO BE ASSESSED DURING PRECON
* IF THERE IS ANY DISCREPANCY FOUND AT CIO25 ON THE RECTIFIER/BATTERY COUNT IN RELATION TO THE SPT PLEASE CONTACT BERNARD NAIDU IMMEDIATELY; SEE SHEET E-1

REFERENCE RFDS ID# 4495866, VERSION 3.00, DATED 01/24/2024

DRAWING INDEX

SHEET NO:	SHEET TITLE
T-1	TITLE SHEET
GN-1	GENERAL NOTES
A-0	OVERALL SITE PLAN
A-1	ENLARGED SITE PLAN
A-2	EQUIPMENT LAYOUT
A-3	EXISTING ANTENNA LAYOUT
A-3.1	PROPOSED ANTENNA LAYOUT
A-4	ELEVATIONS
A-5	DETAILS
A-5.1	DETAILS
A-5.2	DETAILS
G-1	GROUNDING DETAILS
E-1	ELECTRICAL DIAGRAM & LTE RET SCHEMATIC DIAGRAM

APPROVALS

THE FOLLOWING PARTIES HEREBY APPROVE AND ACCEPT THESE DOCUMENTS & AUTHORIZE THE SUBCONTRACTOR TO PROCEED WITH THE CONSTRUCTION DESCRIBED HEREIN. ALL DOCUMENTS ARE SUBJECT TO REVIEW BY THE LOCAL BUILDING DEPARTMENT & MAY IMPOSE CHANGES OR MODIFICATIONS.

90% CDS _____ DATE: _____

100% CDS _____ DATE: _____

100% CDS WITH STRUCTURALS _____ DATE: _____

CONSTRUCTION: _____ DATE: _____

RF ENGINEER _____ DATE: _____

SCOPING ENGINEER _____ DATE: _____

PROJECT MANAGER: _____ DATE: _____

SCALE

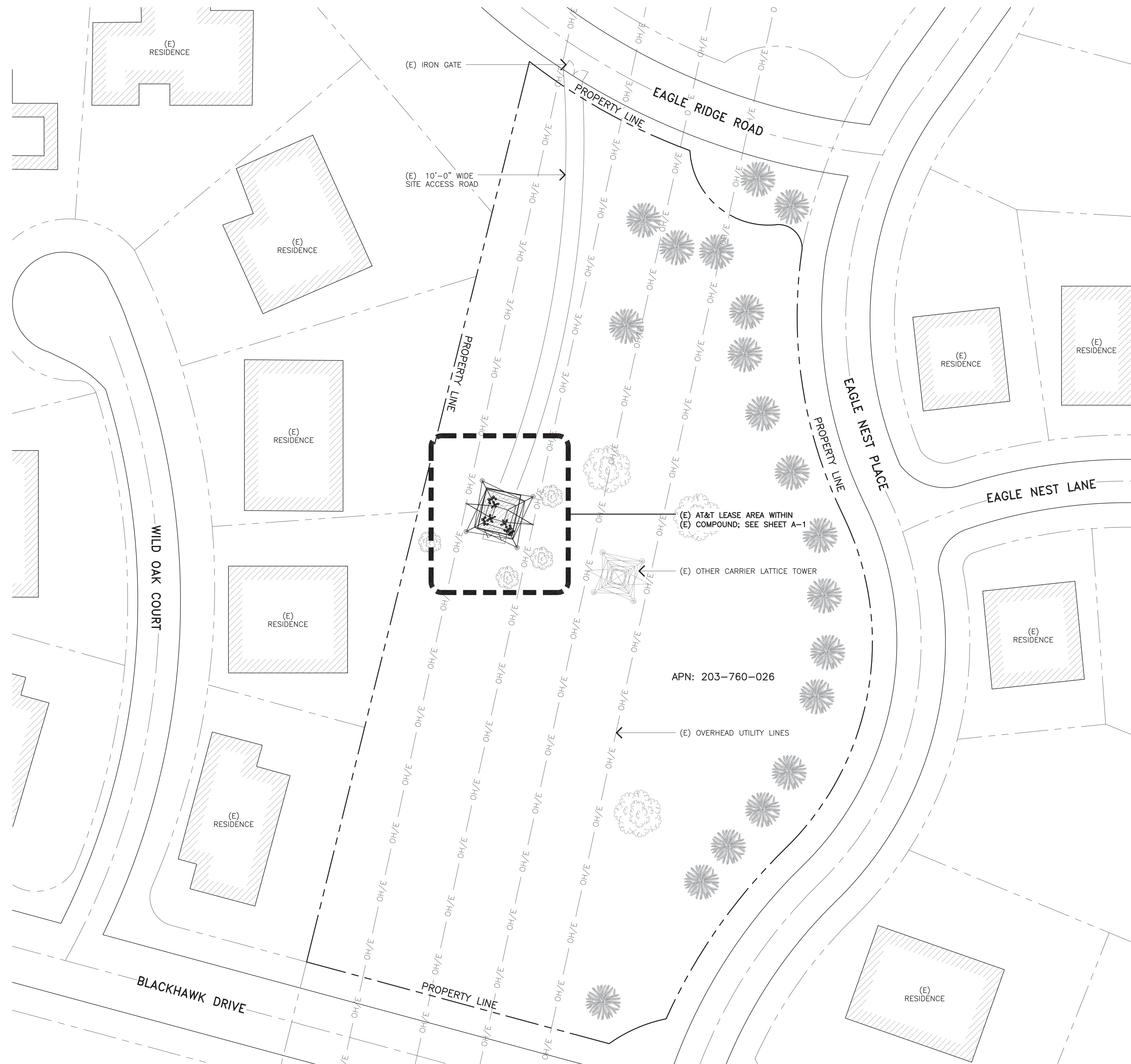
THE DRAWING SCALES SHOWN IN THIS SET REPRESENT THE CORRECT SCALE ONLY WHEN THESE DRAWINGS ARE PRINTED IN A 11"x17" OR 24"x36" FORMAT.



USA NORTH

Know what's below.
Call before you dig.

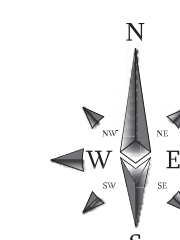
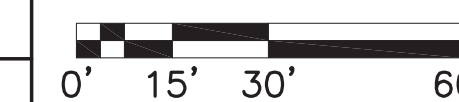
Call Two Working Days Before You Dig!
811 / 800-227-2600
usanorth.org



NOTE
 THESE DRAWINGS WERE PRODUCED WITHOUT THE BENEFIT OF A CURRENT LAND SURVEY. ALL PROPERTY LINES, EASEMENTS, SETBACKS, AND EXISTING CONDITIONS ARE APPROXIMATE AND SHALL BE VERIFIED PRIOR TO START OF CONSTRUCTION.

OVERALL SITE PLAN

11X17 SCALE: 1" = 60'
 24X36 SCALE: 1" = 30'



1



MasTec
 Network Solutions

125 KLUG CIRCLE
 CORONA, CALIFORNIA 92880

FA CODE: FA # 10070274
 DRAWN BY: J.C.
 JOB #: 30097

REV	DATE	DESCRIPTION
1	02/05/2024	100% CD'S - S&S
0	06/27/23	100% CD'S FOR REVIEW
E	04/24/23	95% CD'S UPDATE-RAD CHANGE
D	01/30/23	95% CD'S UPDATE
C	04/28/22	95% CD'S UPDATE
B	03/01/22	90% CD'S UPDATE
A	01/27/22	90% CD'S FOR REVIEW



Digitaly signed by
 Joseph Russell King
 Date: 2024.02.05 17:30:20
 -05'00"

IT IS A VIOLATION OF LAW FOR ANY PERSON, UNLESS THEY ARE ACTING UNDER THE DIRECTION OF A LICENSED PROFESSIONAL ENGINEER, TO ALTER THIS DOCUMENT.

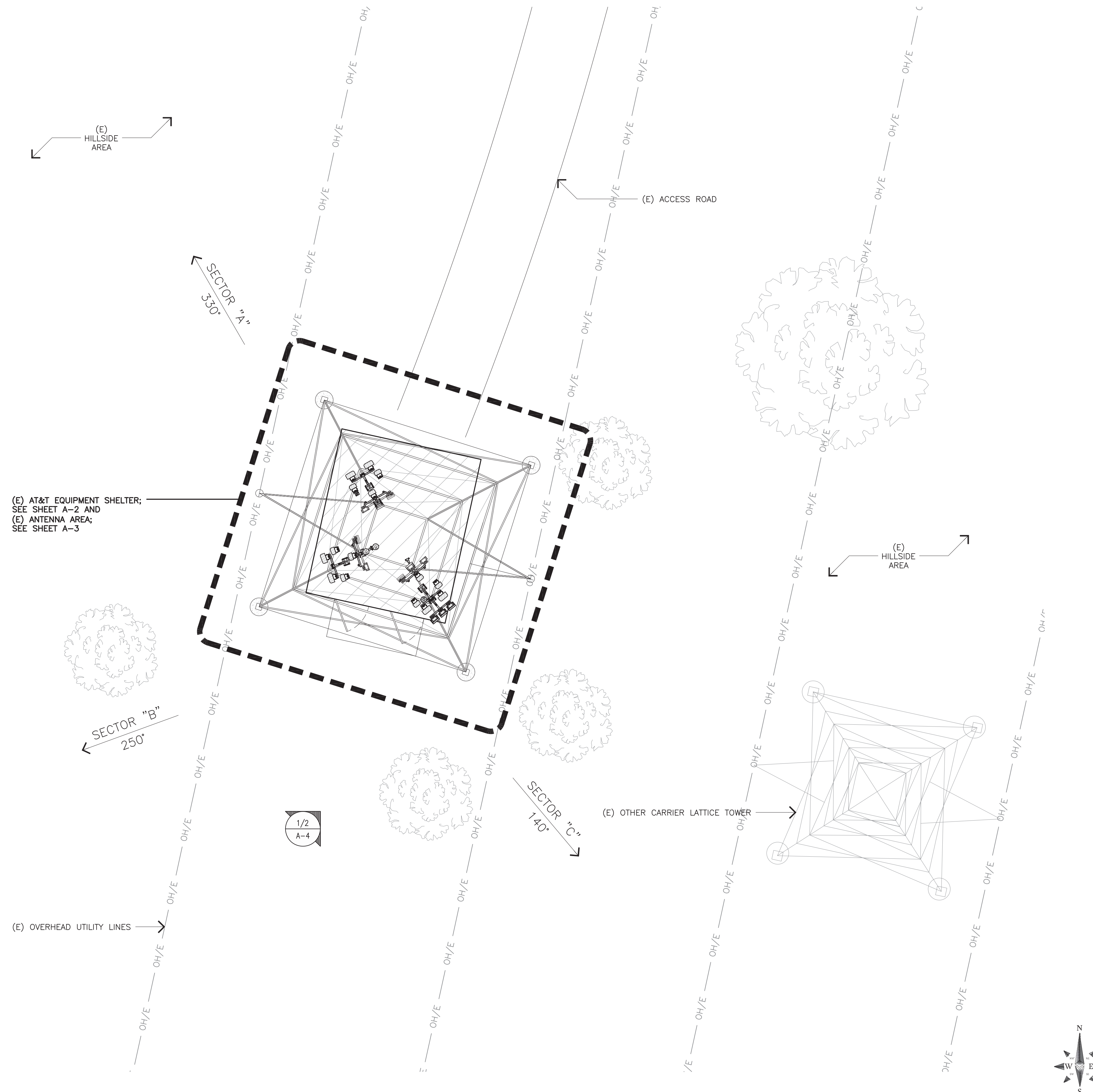
CCL04753
 BLACKHAWK
 CORNER OF BLACKHAWK AND EAGLES NEST
 DANVILLE, CALIFORNIA 94506
 FA NUMBER
 10070274

SHEET TITLE
OVERALL SITE PLAN

SHEET NUMBER
A-0

ENLARGED SITE PLAN GENERAL NOTES

- A. OTHER CARRIER ANTENNAS NOT SHOWN FOR CLARITY.
- B. GROUND ALL (N) EQUIPMENT AND COAX PER SHEET G-1.
- C. CONTRACTOR TO PROVIDE ALL LABOR TO INSTALL COAX, RETS AND ANTENNAS.
- D. CONTRACTOR TO PROVIDE ALL COAX, CONNECTORS, ANCILLARY EQUIPMENT (INCLUDING WEATHER STRIPPING, GROUND KITS, ETC.).
- E. CONTRACTOR TO COLOR CODE ALL COAX. COLORED BANDS OF TAPE ON COAX IDENTIFY SECTOR, FREQUENCY, TECHNOLOGY, AND TRANSMIT GROUP AS FOLLOWS ON ALL COAX MODIFIED OR INSTALLED ONLY.
- F. WHEN ANTENNA LINES ARE DIPLEXED, THE COLOR CODE OF THE HIGHEST FREQUENCY PREVAILS (I.E. UMS DIPLEXED WITH TDMA SHOULD HAVE COLOR 4 BANDS).
- G. ALL ANTENNAS AND ANTENNA CABLE SHALL BE FURNISHED BY CONTRACTOR AND INSTALLED BY ANTENNA INSTALLATION CONTRACTOR.
- H. PRIOR TO PLACEMENT OF ANTENNA POLE MOUNTS, THE CONTRACTOR SHALL VERIFY THAT THE AZIMUTH AND DIMENSIONS SHOWN ON THE PLANS MATCH ACTUAL FIELD CONDITIONS. ALLOWABLE TOLERANCE: HORIZONTAL ALIGNMENT = ±5'; VERTICAL ALIGNMENT = ±1'.
- I. ANTENNA INSTALLATION CONTRACTOR SHALL PROVIDE ALL CONDUIT, CABLE TRAY, GROUNDS, ETC. FOR COMPLETE INSTALLATION OF ANTENNAS AND CABLES SHOWN AND INTENDED AS REQUIRED FOR A COMPLETE OPERATING SYSTEM IN ACCORDANCE WITH CONTRACTOR STANDARDS.
- J. IN NO CASE SHALL THERE BE ANY MORE THAN TWO (2) 90° TURNS (OR EQUIVALENT) IN ANY CONTINUOUS LENGTH OF CONDUIT BETWEEN PULL BOXES OR SIMILAR FEATURES.
- K. ANTENNA CONDUIT SHALL ONLY INCLUDE FACTORY-MADE LARGE RADIUS SWEEPS AT ALL CHANGES IN DIRECTION, SWEEP RADIUS SHALL BE 18" MINIMUM ABOVE GROUND AND 36" MINIMUM BELOW GROUND.
- L. CONDUIT SHALL BE 3"Ø MINIMUM. ALL UNDERGROUND CONDUIT SHALL BE SCHEDULE 40 PVC. ALL EXPOSED CONDUIT ABOVE GRADE LEVEL SHALL BE 1MC OR RIGID GALVANIZED. ALL EXPOSED CONDUIT PROTECTED IN A BUILDING OR ON A ROOF SHALL BE EMT OR UV STABILIZED PAINTED SCHEDULE 80 PVC.
- M. IN HIGH TRAFFIC AREAS OR WHERE SUSCEPTIBLE TO DAMAGE CONTRACTOR SHALL PROVIDE FORMED 14 GA. GALVANIZED SHEET METAL COVER OVER COAXIAL CABLE ROUTES. WHERE CABLE IS RUN ON THE WALL, ATTACH UNISTRUT TO WALL AND COVER WITH 14 GA. GALVANIZED FORMED SHEET METAL COVER OR MATERIAL AS DIRECTED BY CONTRACTOR CONSTRUCTION MANAGER.
- N. VERIFY ROUTE AND LENGTH OF CABLE PRIOR TO CUTTING. ADJUST INDICATED ROUTE AS REQUIRED TO CLEAR (E) EQUIPMENT AT FACILITIES.
- O. MAXIMUM LENGTH OF 7/8" COAX CABLE SHALL BE 140'-0". MAXIMUM LENGTH OF 1-1/4" COAX CABLE SHALL BE 190'-0". MAXIMUM LENGTH OF 1-5/8" COAX CABLE SHALL BE 235'-0".
- P. VERIFY MODEL NUMBERS OF ANTENNAS WITH CONTRACTOR SERVICES.
- Q. THE CONTRACTOR SHALL PROVIDE TESTING OF ANTENNAS AND SHALL PROVIDE DOCUMENTATION TO THE CONTRACTOR PROJECT MANAGER.
- R. GENERAL CONTRACTOR TO VERIFY ALL TORQUE TOLERANCES PER THE MANUFACTURERS SPECIFICATIONS AND RECOMMENDATIONS.



125 KLUG CIRCLE
CORONA, CALIFORNIA 92880

FA CODE: FA # 10070274

DRAWN BY: J.C

JOB #: 30097

REV	DATE	DESCRIPTION
1	02/05/2024	100% CD'S - S&S
0	06/27/23	100% CD'S FOR REVIEW
E	04/24/23	95% CD'S UPDATE-RAD CHANGE
D	01/30/23	95% CD'S UPDATE
C	04/28/22	95% CD'S UPDATE
B	03/01/22	90% CD'S UPDATE
A	01/27/22	90% CD'S FOR REVIEW



Digitally signed by Joseph Russell King
Date: 2024.02.05 17:30:54 -05'00'

IT IS A VIOLATION OF LAW FOR ANY PERSON, UNLESS THEY ARE ACTING UNDER THE DIRECTION OF A LICENSED PROFESSIONAL ENGINEER, TO ALTER THIS DOCUMENT.

CCL04753
BLACKHAWK
CORNER OF BLACKHAWK AND EAGLES NEST
DANVILLE, CALIFORNIA 94506
FA NUMBER
10070274

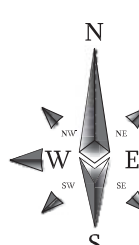
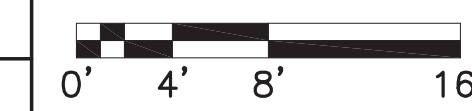
SHEET TITLE
ENLARGED SITE PLAN

SHEET NUMBER
A-1

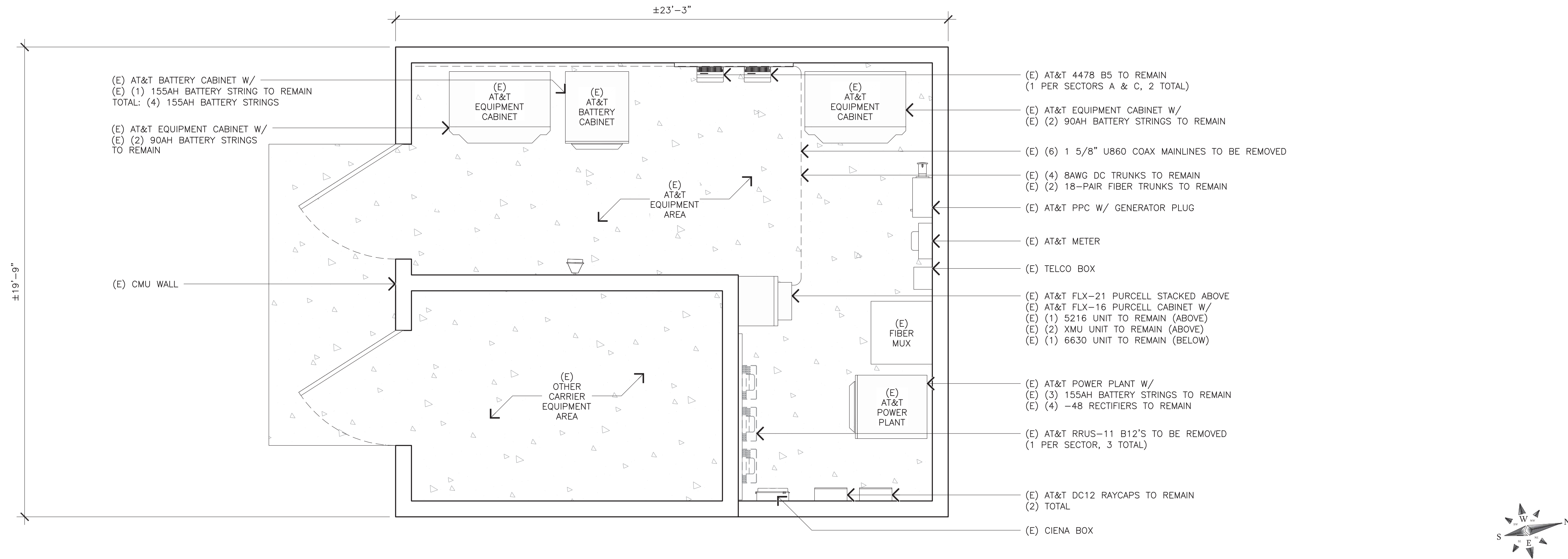
ENLARGED SITE PLAN

11X17 SCALE: 1/16" = 1'-0"

24X36 SCALE: 1/8" = 1'-0"



1



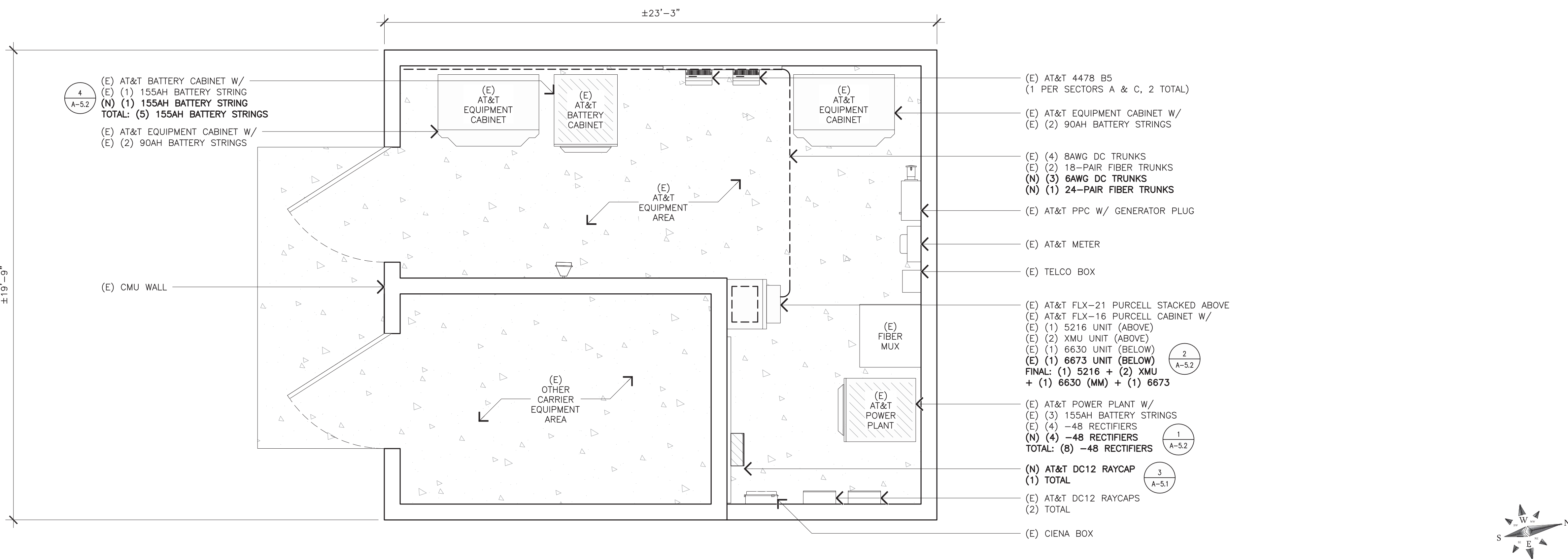
125 KLUG CIRCLE
CORONA, CALIFORNIA 92880

FA CODE:	FA # 10070274
DRAWN BY:	J.C
JOB #:	30097

REV	DATE	DESCRIPTION
1	02/05/2024	100% CD'S - S&S
0	06/27/23	100% CD'S FOR REVIEW
E	04/24/23	95% CD'S UPDATE-RAD CHANGE
D	01/30/23	95% CD'S UPDATE
C	04/28/22	95% CD'S UPDATE
B	03/01/22	90% CD'S UPDATE
A	01/27/22	90% CD'S FOR REVIEW

EXISTING EQUIPMENT LAYOUT

11X17 SCALE: 3/16" = 1'-0"
24X36 SCALE: 3/8" = 1'-0"
0' 1' 3' 5'



Digitally signed by Joseph Russell King
Date: 2024.02.05 17:31:15 -05'00'

IT IS A VIOLATION OF LAW FOR ANY PERSON, UNLESS THEY ARE ACTING UNDER THE DIRECTION OF A LICENSED PROFESSIONAL ENGINEER, TO ALTER THIS DOCUMENT.

CCL04753
BLACKHAWK
CORNER OF BLACKHAWK AND EAGLES NEST
DANVILLE, CALIFORNIA 94506
FA NUMBER
10070274

SHEET TITLE
EQUIPMENT LAYOUT

SHEET NUMBER
A-2

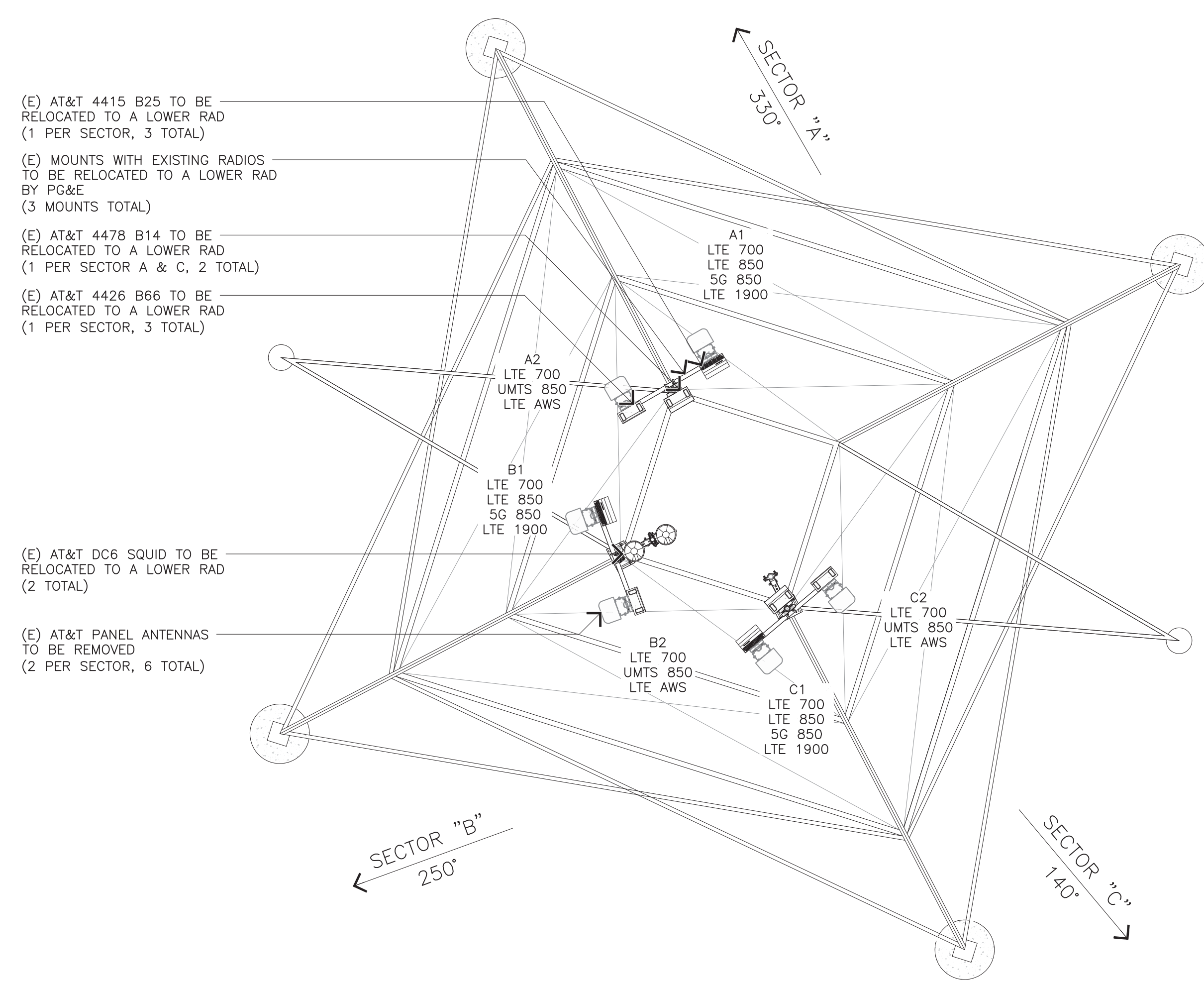
PROPOSED EQUIPMENT LAYOUT

11X17 SCALE: 3/16" = 1'-0"
24X36 SCALE: 3/8" = 1'-0"
0' 1' 3' 5'

EXISTING ANTENNA SCHEDULE										
SECTOR	POSITION	BAND TECH.	ANTENNA MODEL	ANTENNA AZIMUTH	RAD-CENTER	QTY./RRU MODEL	QTY./DIPLEXER MODEL	QTY./RAYCAP MODEL	CABLING	LENGTH
ALPHA	A1	LTE 700 LTE 850 5G 850 LTE 1900	CCI OPA-65R-BU6BA-K	330°	124'-0"	(1) RRU5-11 B12 (DN) (1) 4478 B5 (DN) (1) 4415 B25	-	(1) DC6-48-60-18-8C-EV	(4) 8AWG DC TRUNKS (2) 18-PAIR FIBER TRUNKS	±80'
	A2	LTE 700 UMTS 850 LTE AWS	CCI OPA-65R-BU6BA-K	330°	124'-0"	(1) 4478 B14 (1) 4426 B66	-	-		
BETA	B1	LTE 700 LTE 850 5G 850 LTE 1900	CCI OPA-65R-BU6BA-K	250°	124'-0"	(1) RRU5-11 B12 (DN) (1) 4415 B25	-	(1) DC6-48-60-18-8C-EV		
	B2	LTE 700 UMTS 850 LTE AWS	CCI OPA-65R-BU6BA-K	250°	124'-0"	(1) 4426 B66	-	-		
GAMMA	C1	LTE 700 LTE 850 5G 850 LTE 1900	CCI OPA-65R-BU6BA-K	140°	124'-0"	(1) RRU5-11 B12 (DN) (1) 4478 B5 (DN) (1) 4415 B25	-	-		
	C2	LTE 700 UMTS 850 LTE AWS	CCI OPA-65R-BU6BA-K	140°	124'-0"	(1) 4478 B14 (1) 4426 B66	-	-		
TOTALS			6 TOTAL			8 TOTAL (UP) 5 TOTAL (DN)	0 TOTAL	2 TOTAL		

LEGEND /NOTES
 (UP) UP ON TOWER
 (DN) DOWN NEAR EQUIPMENT AREA
 *VERIFY LATEST VERSION OF THE RFDS PRIOR TO CONSTRUCTION.
 *DO NOT USE CABLE LENGTHS FOR CUT LENGTHS - ESTIMATES ONLY - VERIFY IN FIELD PRIOR TO ORDERING MATERIAL.

124'-0" RAD-CENTER



125 KLUG CIRCLE
CORONA, CALIFORNIA 92880

FA CODE: FA # 10070274
 DRAWN BY: J.C.
 JOB #: 30097

REV	DATE	DESCRIPTION
1	02/05/2024	100% CD'S - S&S
0	06/27/23	100% CD'S FOR REVIEW
E	04/24/23	95% CD'S UPDATE-RAD CHANGE
D	01/30/23	95% CD'S UPDATE
C	04/28/22	95% CD'S UPDATE
B	03/01/22	90% CD'S UPDATE
A	01/27/22	90% CD'S FOR REVIEW



Digitally signed by Joseph Russell King
 Date: 2024.02.05 17:31:39 -05'00'

IT IS A VIOLATION OF LAW FOR ANY PERSON, UNLESS THEY ARE ACTING UNDER THE DIRECTION OF A LICENSED PROFESSIONAL ENGINEER, TO ALTER THIS DOCUMENT.

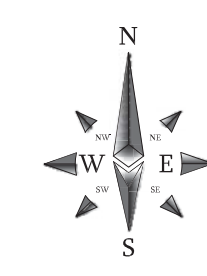
CCL04753
 BLACKHAWK
 CORNER OF BLACKHAWK AND EAGLES NEST
 DANVILLE, CALIFORNIA 94506
 FA NUMBER
 10070274

SHEET TITLE
 EXISTING ANTENNA LAYOUT

SHEET NUMBER
 A-3

EXISTING ANTENNA LAYOUT

11X17 SCALE: 1/8" = 1'-0"
 24X36 SCALE: 1/4" = 1'-0"
 0' 2' 4' 8'



1

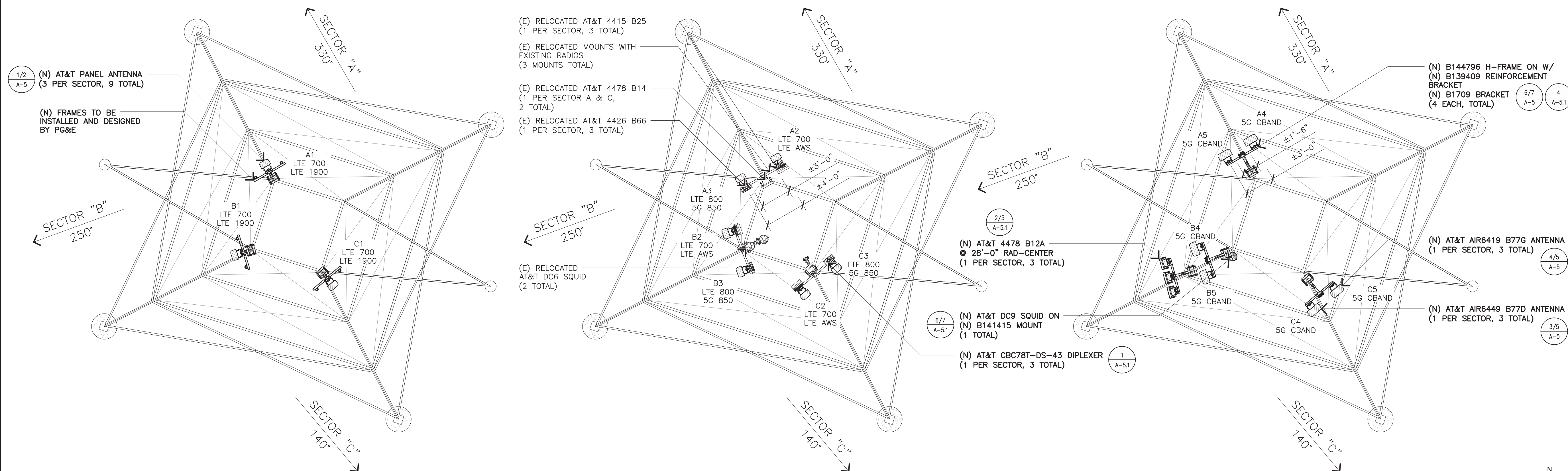
FINAL ANTENNA SCHEDULE										
SECTOR	POSITION	BAND TECH.	ANTENNA MODEL	ANTENNA AZIMUTH	RAD-CENTER	QTY./RRU MODEL	QTY./DIPLEXER MODEL	QTY./RAYCAP MODEL	CABLING	LENGTH
ALPHA	A1	LTE 700 LTE 1900	COMMSCOPE SBNHH-1D65A	330°	128'-6"	(1) 4415 B25 (1) 4478 B12A	-		(4) BAWG DC TRUNKS (2) 18-PAIR FIBER TRUNKS (5) BAWG DC TRUNKS (1) 24-PAIR FIBER TRUNKS	±80'
	A2	LTE 700 LTE AWS	COMMSCOPE SBNHH-1D65A	330°	121'-10"	(1) 4426 B66	-	(1) DC6-48-60-18-8C-EV		
	A3	LTE 700 5G 850	COMMSCOPE SBNHH-1D65A	330°	121'-10"	(1) 4478 B14 (1) 4478 B5 (DN)	(1) CBC78T-DS-43			
	A4	5G CBAND	ERICSSON AIR6449 B77D	330°	36'-0"	-	-			
	A5	5G CBAND	ERICSSON AIR6419 B77G	330°	36'-0"	-	-			
BETA	B1	LTE 700 LTE 1900	COMMSCOPE SBNHH-1D65A	250°	128'-6"	(1) 4415 B25 (1) 4478 B12A	-	(1) DC6-48-60-18-8C-EV		
	B2	LTE 700 LTE AWS	COMMSCOPE SBNHH-1D65A	250°	121'-10"	(1) 4426 B66	-			
	B3	LTE 700 5G 850	COMMSCOPE SBNHH-1D65A	250°	121'-10"	-	(1) CBC78T-DS-43			
	B4	5G CBAND	ERICSSON AIR6449 B77D	250°	36'-0"	-	-	(1) DC9-48-60-24-8C-EV		
	B5	5G CBAND	ERICSSON AIR6419 B77G	250°	36'-0"	-	-			
GAMMA	C1	LTE 700 LTE 1900	COMMSCOPE SBNHH-1D65A	140°	128'-6"	(1) 4415 B25 (1) 4478 B12A	-			
	C2	LTE 700 LTE AWS	COMMSCOPE SBNHH-1D65A	140°	121'-10"	(1) 4426 B66	-			
	C3	LTE 700 5G 850	COMMSCOPE SBNHH-1D65A	140°	121'-10"	(1) 4478 B14 (1) 4478 B5 (DN)	(1) CBC78T-DS-43			
	C4	5G CBAND	ERICSSON AIR6449 B77D	140°	36'-0"	-	-			
	C5	5G CBAND	ERICSSON AIR6419 B77G	140°	36'-0"	-	-			
TOTALS			15 TOTAL			11 TOTAL (UP) 2 TOTAL (DN)	3 TOTAL	3 TOTAL		

LEGEND /NOTES
 (UP) UP ON TOWER
 (DN) DOWN NEAR EQUIPMENT AREA
 *VERIFY LATEST VERSION OF THE RFDS PRIOR TO CONSTRUCTION.
 **DO NOT USE CABLE LENGTHS FOR CUT LENGTHS - ESTIMATES ONLY - VERIFY IN FIELD PRIOR TO ORDERING MATERIAL.

128'-6" RAD-CENTER

121'-10" RAD-CENTER

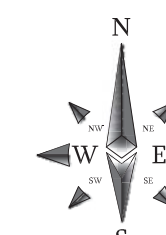
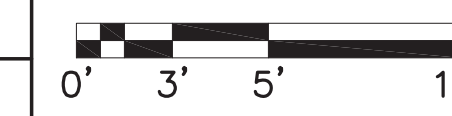
36'-0" RAD-CENTER
28'-0" RAD-CENTER



NOTE:
 1. PAINT ALL NEW ANTENNAS, TMA'S, COAX LINES AND ASSOCIATED EQUIPMENT TO MATCH EXISTING CONDITIONS
 2. ALL BOLTS AND HARDWARE SHOULD BE CHECKED FOR TIGHTNESS AND CONDITION PRIOR TO INSTALLING THE PROPOSED EQUIPMENT
 3. NO EQUIPMENT SHALL BE INSTALLED AROUND OR IN FRONT OF THE ANTENNA OR ANTENNA PATTERNS
 4. MOUNTED RRUS NOT TO EXCEED 6" ABOVE OR BELOW ANTENNAS
 5. CONSTRUCTION TO CONFIRM RAD CENTER BELOW CONDUCTORS IN FIELD

PROPOSED ANTENNA LAYOUT

11X17 SCALE: 3/32" = 1'-0"
 24X36 SCALE: 3/16" = 1'-0"



1



125 KLUG CIRCLE
CORONA, CALIFORNIA 92880

FA CODE: FA # 10070274

DRAWN BY: J.C

JOB #: 30097

REV	DATE	DESCRIPTION
1	02/05/2024	100% CD'S - S&S
0	06/27/23	100% CD'S FOR REVIEW
E	04/24/23	95% CD'S UPDATE-RAD CHANGE
D	01/30/23	95% CD'S UPDATE
C	04/28/22	95% CD'S UPDATE
B	03/01/22	90% CD'S UPDATE
A	01/27/22	90% CD'S FOR REVIEW



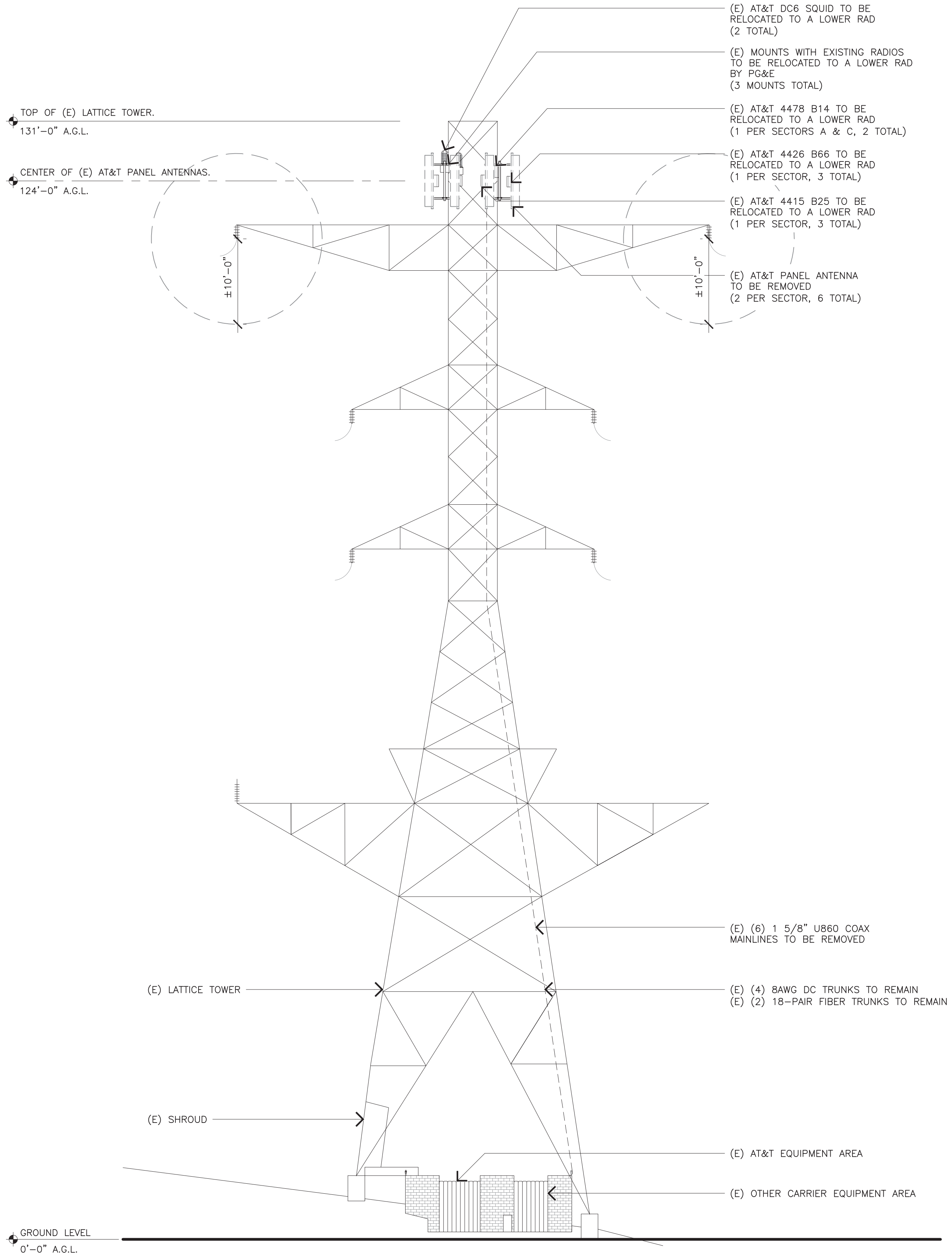
Digitally signed by Joseph Russell King
 Date: 2024.02.05 17:31:56 -05'00'

IT IS A VIOLATION OF LAW FOR ANY PERSON, UNLESS THEY ARE ACTING UNDER THE DIRECTION OF A LICENSED PROFESSIONAL ENGINEER, TO ALTER THIS DOCUMENT.

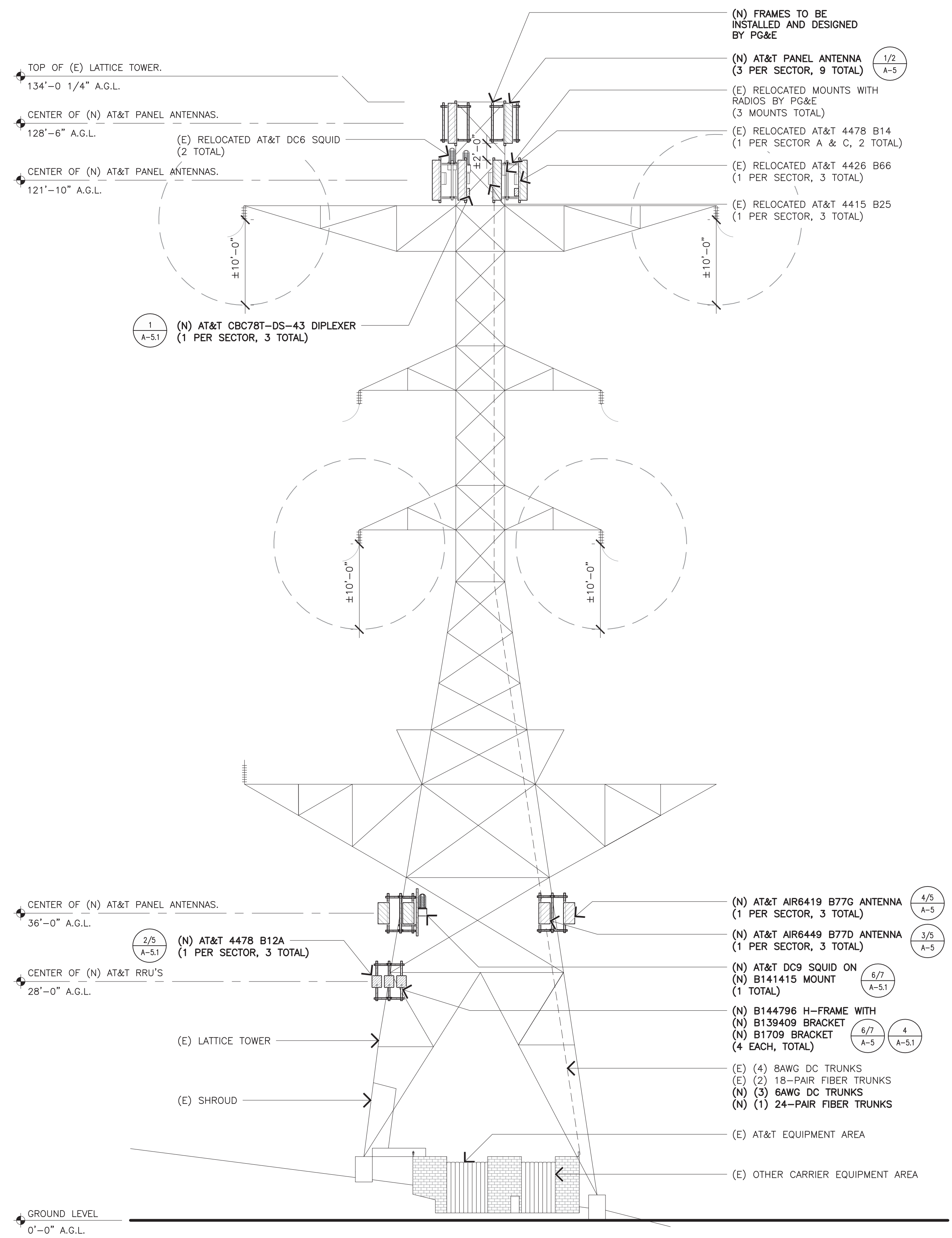
CCL04753
 BLACKHAWK
 CORNER OF BLACKHAWK AND EAGLES NEST
 DANVILLE, CALIFORNIA 94506
 FA NUMBER
 10070274

SHEET TITLE
 PROPOSED
 ANTENNA LAYOUT

SHEET NUMBER
 A-3.1



NOTE:
 1. PAINT ALL NEW ANTENNAS, TMA'S, COAX LINES AND ASSOCIATED EQUIPMENT TO MATCH EXISTING CONDITIONS
 2. ALL BOLTS AND HARDWARE SHOULD BE CHECKED FOR TIGHTNESS AND CONDITION PRIOR TO INSTALLING THE PROPOSED EQUIPMENT
 3. NO EQUIPMENT SHALL BE INSTALLED AROUND OR IN FRONT OF THE ANTENNA OR ANTENNA PATTERNS
 4. SITE WALK REQUIRED TO CONFIRM PROPOSED BUILD, MIGHT NEED TO LOWER BELOW CONDUCTOR H-FRAMES
 5. CONSTRUCTION TO CONFIRM RAD CENTER BELOW CONDUCTORS IN FIELD



MasTec
 Network Solutions

125 KLUG CIRCLE
 CORONA, CALIFORNIA 92880

FA CODE:	FA # 10070274
DRAWN BY:	J.C
JOB #:	30097

REV	DATE	DESCRIPTION
1	02/05/2024	100% CD'S - S&S
0	06/27/23	100% CD'S FOR REVIEW
E	04/24/23	95% CD'S UPDATE-RAD CHANGE
D	01/30/23	95% CD'S UPDATE
C	04/28/22	95% CD'S UPDATE
B	03/01/22	90% CD'S UPDATE
A	01/27/22	90% CD'S FOR REVIEW



Digitally signed by
 Joseph Russell King
 Date: 2024.02.05
 17:32:11 -05'00'

IT IS A VIOLATION OF LAW FOR ANY PERSON, UNLESS THEY ARE ACTING UNDER THE DIRECTION OF A LICENSED PROFESSIONAL ENGINEER, TO ALTER THIS DOCUMENT.

CCL04753
BLACKHAWK
 CORNER OF BLACKHAWK AND EAGLES NEST
 DANVILLE, CALIFORNIA 94506
 FA NUMBER
10070274

SHEET TITLE
ELEVATION

SHEET NUMBER
A-4

EXISTING SOUTHWEST ELEVATION

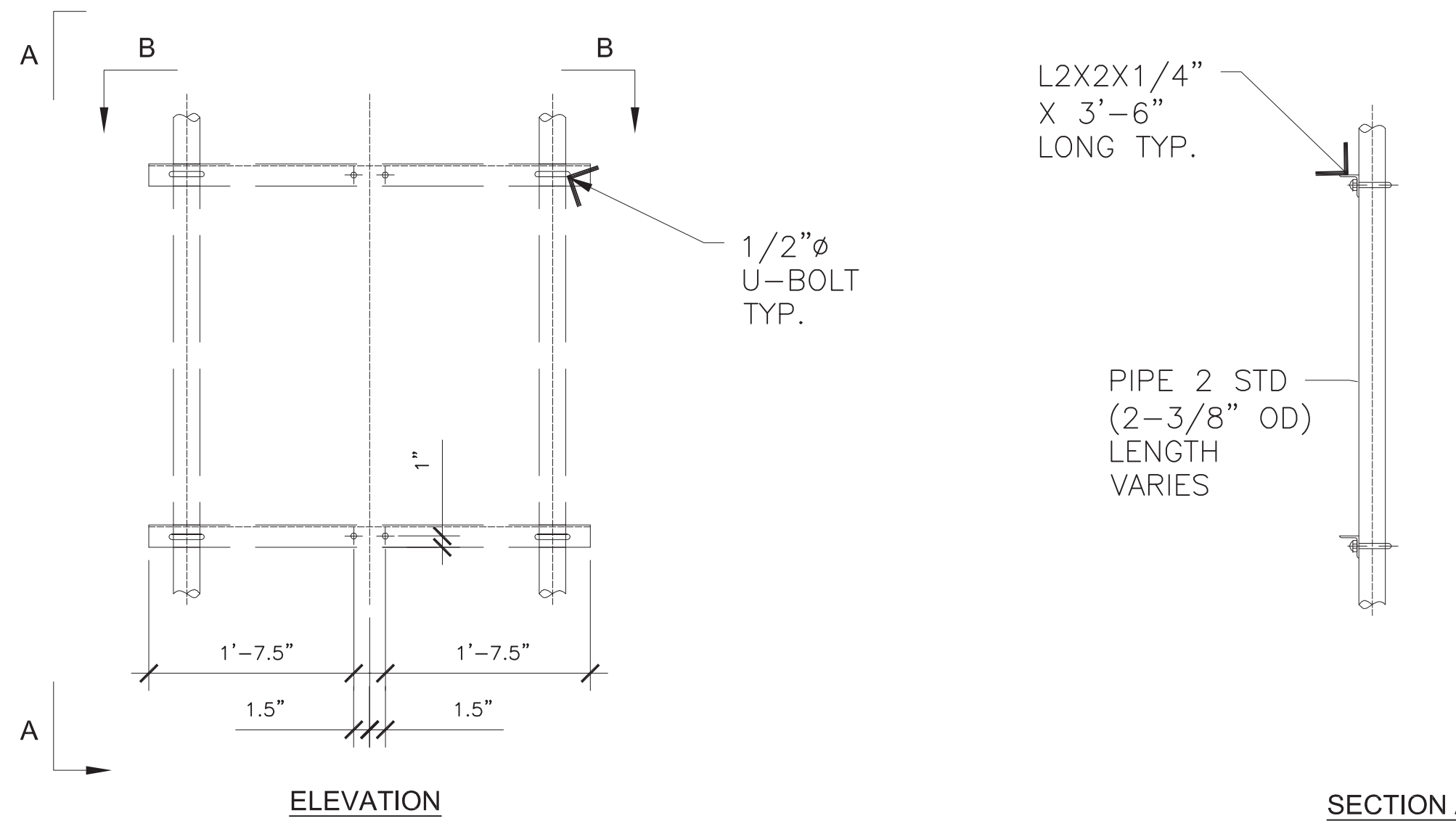
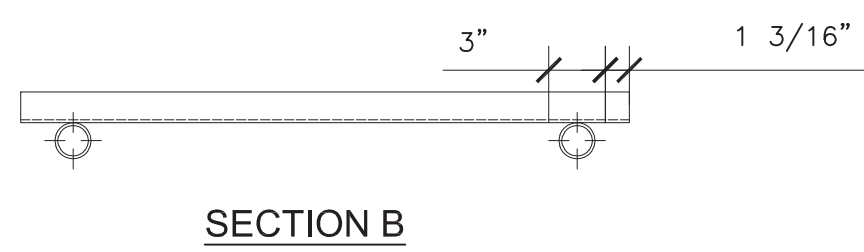
11X17 SCALE: 1/16" = 1'-0"
 24X36 SCALE: 1/8" = 1'-0"
 0' 4' 8' 16'

1

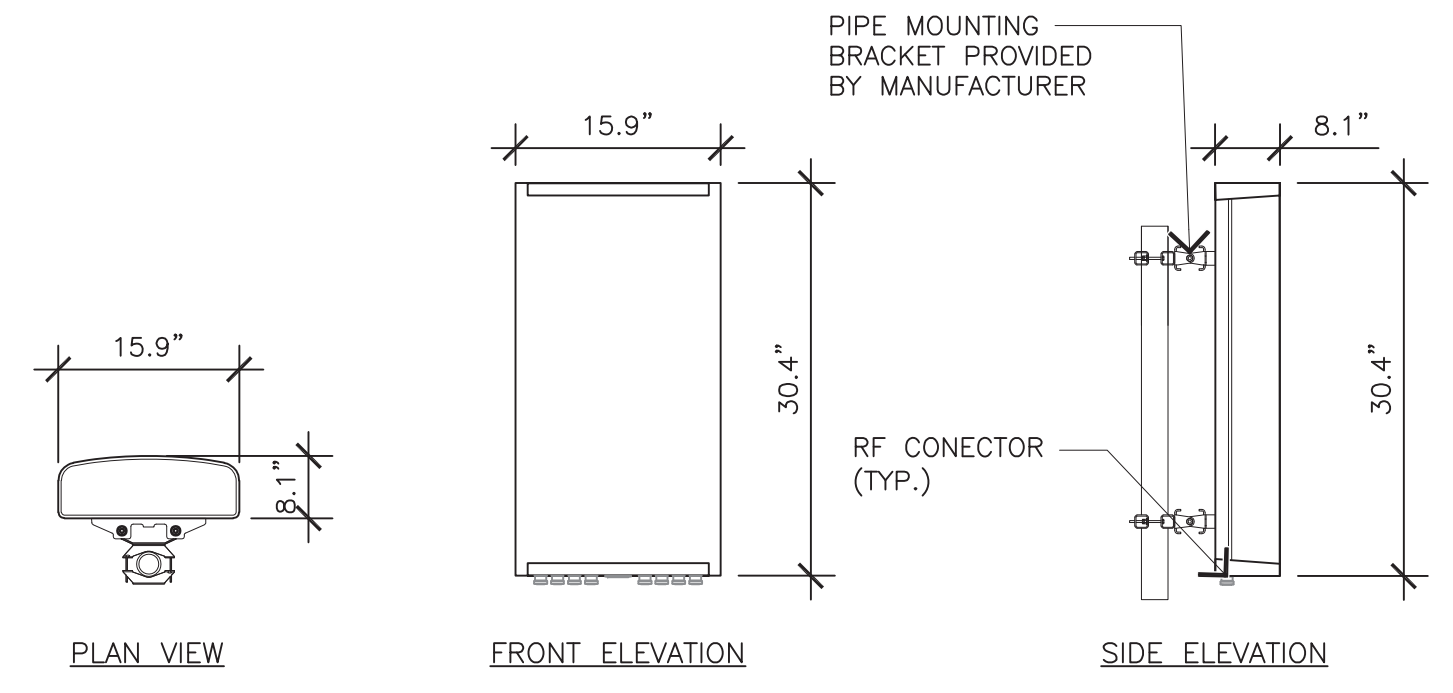
PROPOSED SOUTHWEST ELEVATION

11X17 SCALE: 1/16" = 1'-0"
 24X36 SCALE: 1/8" = 1'-0"
 0' 4' 8' 16'

2



ERICSSON AIR6449 B77D
 DIMENSIONS, HXWXD: 30.4"x15.9"x8.1"
 WEIGHT, WITHOUT PRE-MOUNTED CLAMPS: 81.6 LBS
 WIND LOAD, FRONTAL: 478 N. @ 42 M/S.



125 KLUG CIRCLE
 CORONA, CALIFORNIA 92880

B144796 H-FRAME DETAIL

SCALE: NONE **6**

ANTENNA SPECIFICATIONS

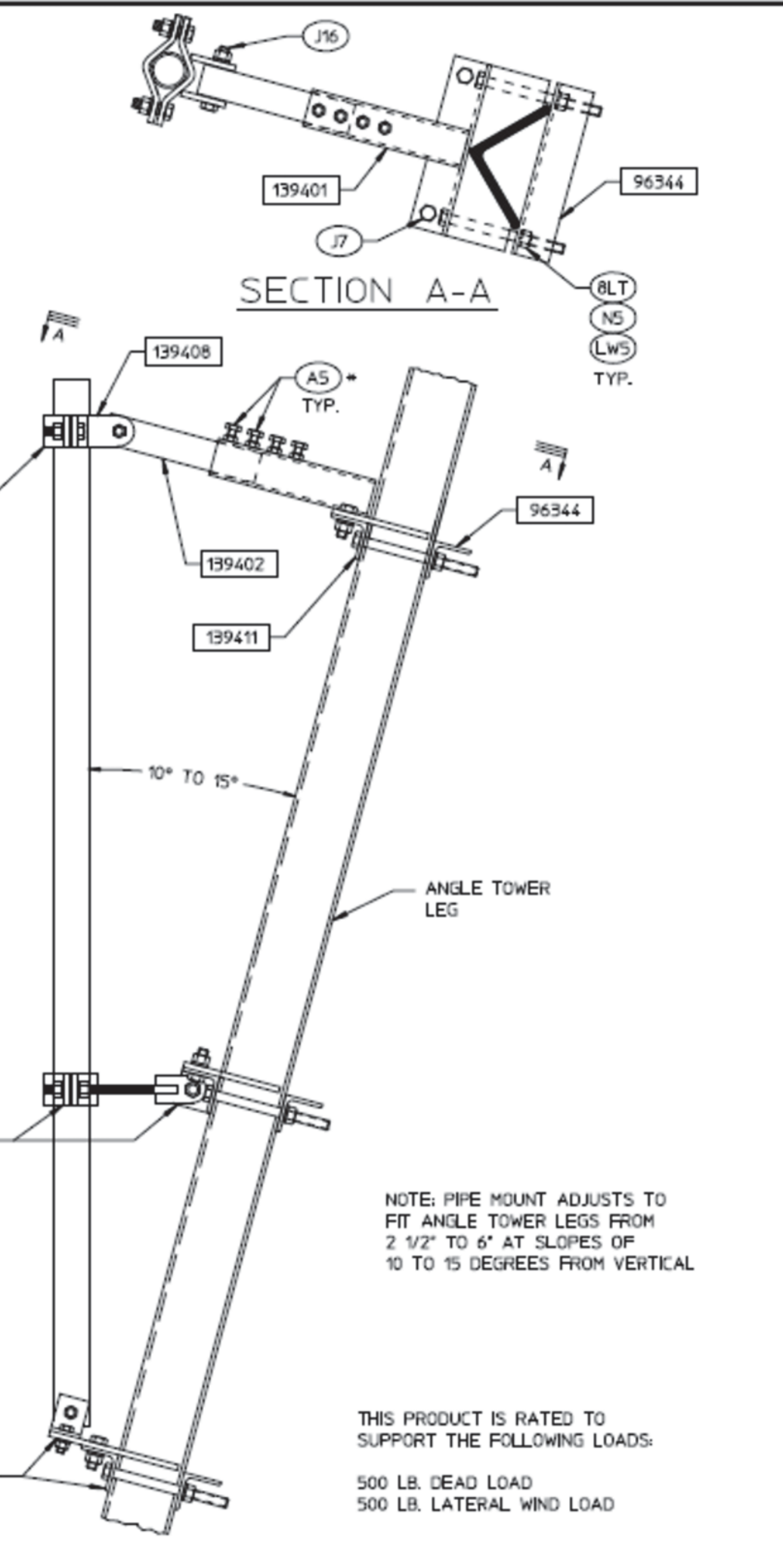
SCALE: NONE **3**

PARTS LIST

MARK	DESCRIPTION	QTY
139401	BRKT WELDMENT	1
139402	TUBE STEEL	1
139408	BRKT WELDMENT	1
96344	ANGLE	1
139411	ANGLE	1
B1534	FORMED PLATE	1

HARDWARE LIST

SYM	DESCRIPTION
A5	4 1/20 X 1 1/2 SET SCREW
J8	2 5/80 X 1 3/4 GS BOLT ASSY.
J6	1 5/80 X 2 GS BOLT ASSY.
J16	1 5/80 X 4 GS BOLT ASSY.
BLT	2 5/80 X 8 BOLT W/6" THREAD
N5	2 5/80 NUT
LWS	2 5/80 LOCKWASHER



PRODUCT NO. B139409
 MODIFICATION FOR B1709
 PCS PIPE MOUNT ASSEMBLY
 FOR 4-LEG ANGLE TOWERS

NO.	REVISIONS
1	ISSUED FOR CONSTRUCTION
2	REVISED FOR B1709

B139409 REINFORCEMENT BRACKET

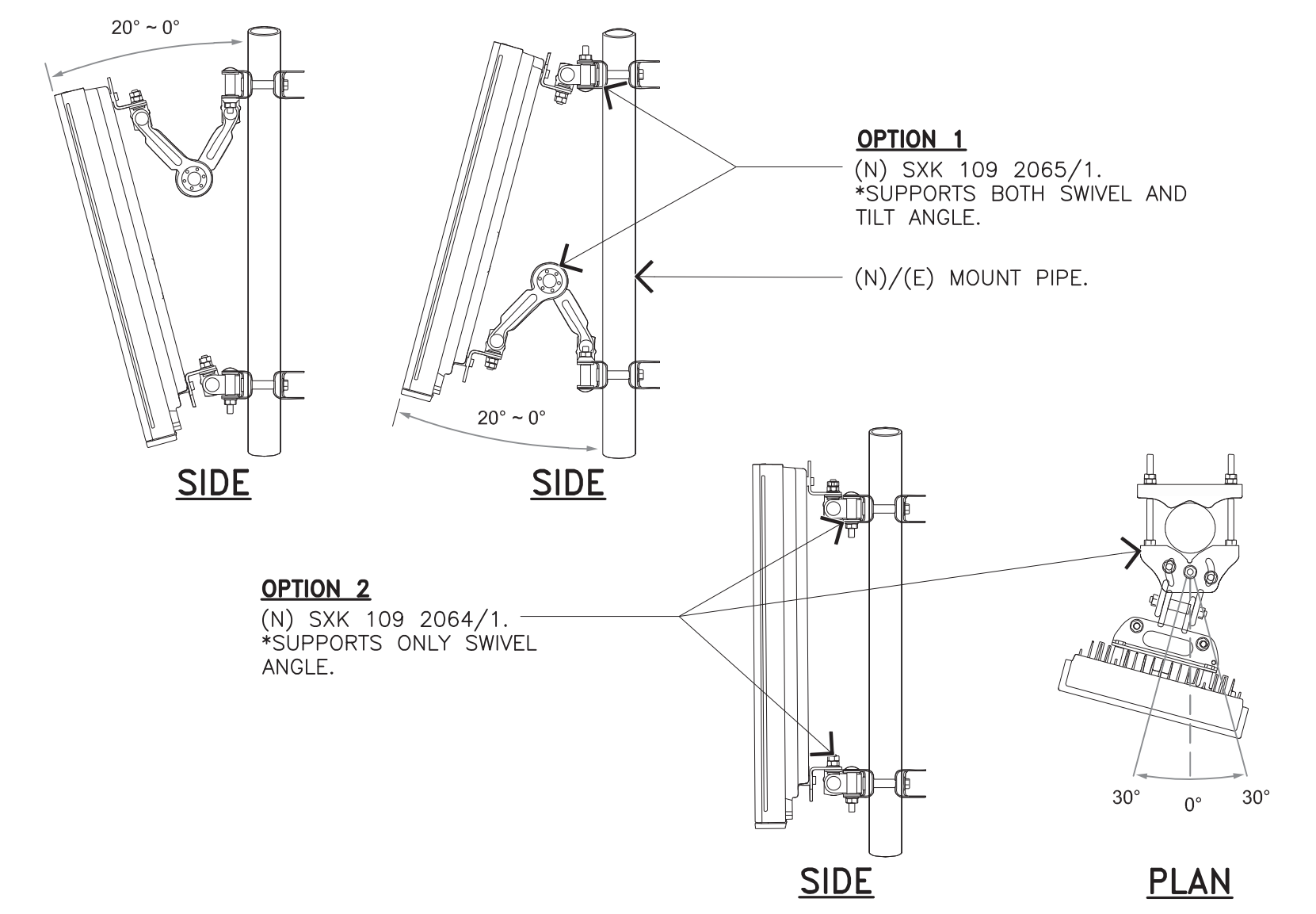
SCALE: NONE **7**

ANTENNA SPECIFICATIONS

SCALE: NONE **4**

ANTENNA SPECIFICATIONS

SCALE: NONE **1**



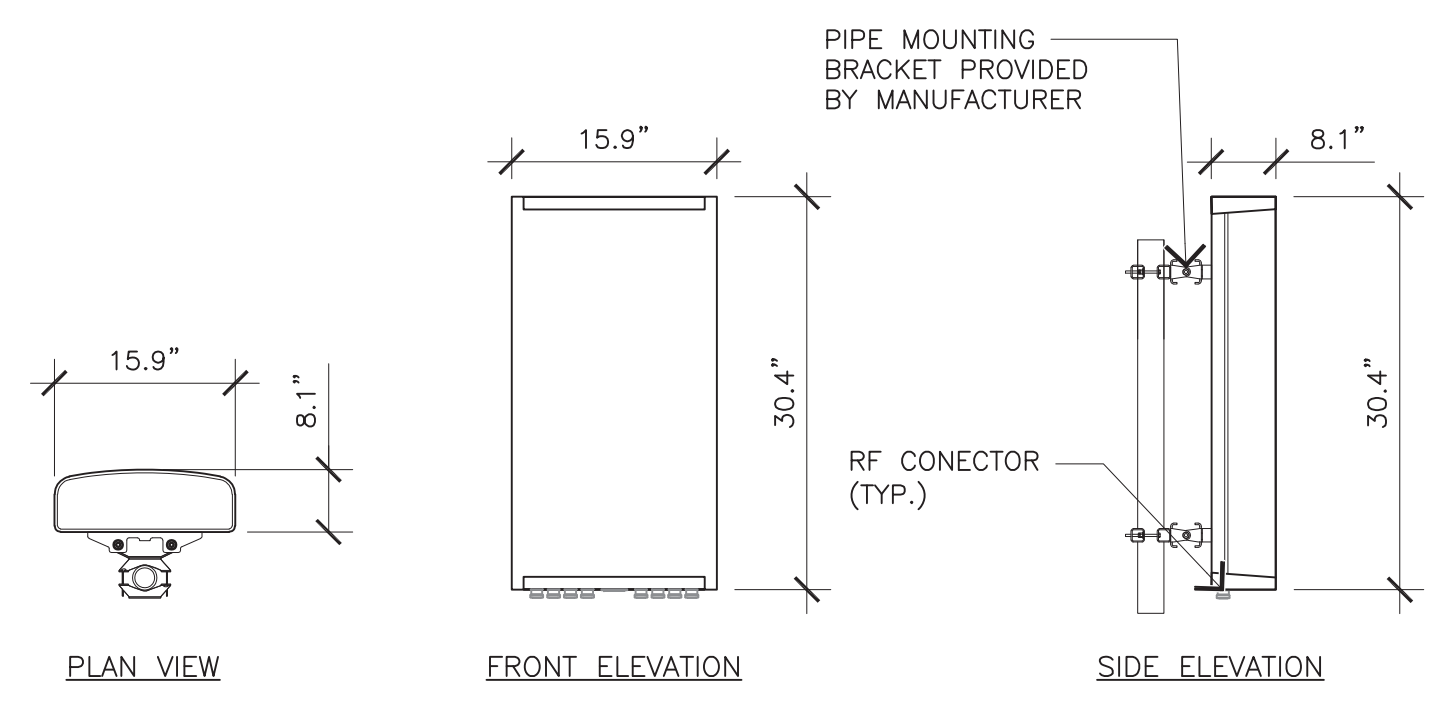
ANTENNA MOUNTING DETAIL

SCALE: NONE **5**

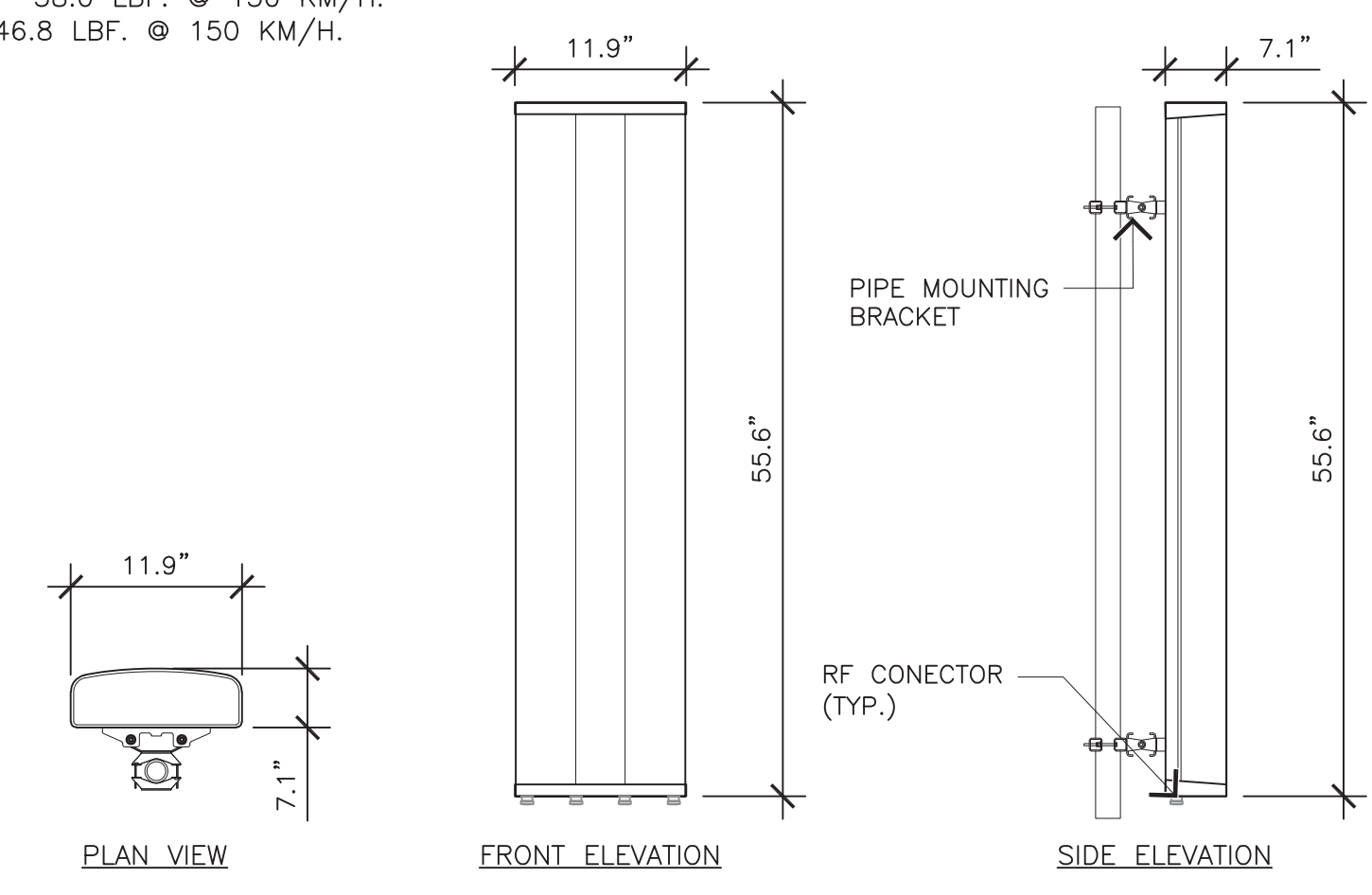
ANTENNA MOUNTING DETAIL

SCALE: NONE **2**

ERICSSON AIR6419 B77G
 DIMENSIONS, HXWXD: 30.4"x15.9"x8.1"
 WEIGHT, WITHOUT PRE-MOUNTED CLAMPS: 81.6 LBS



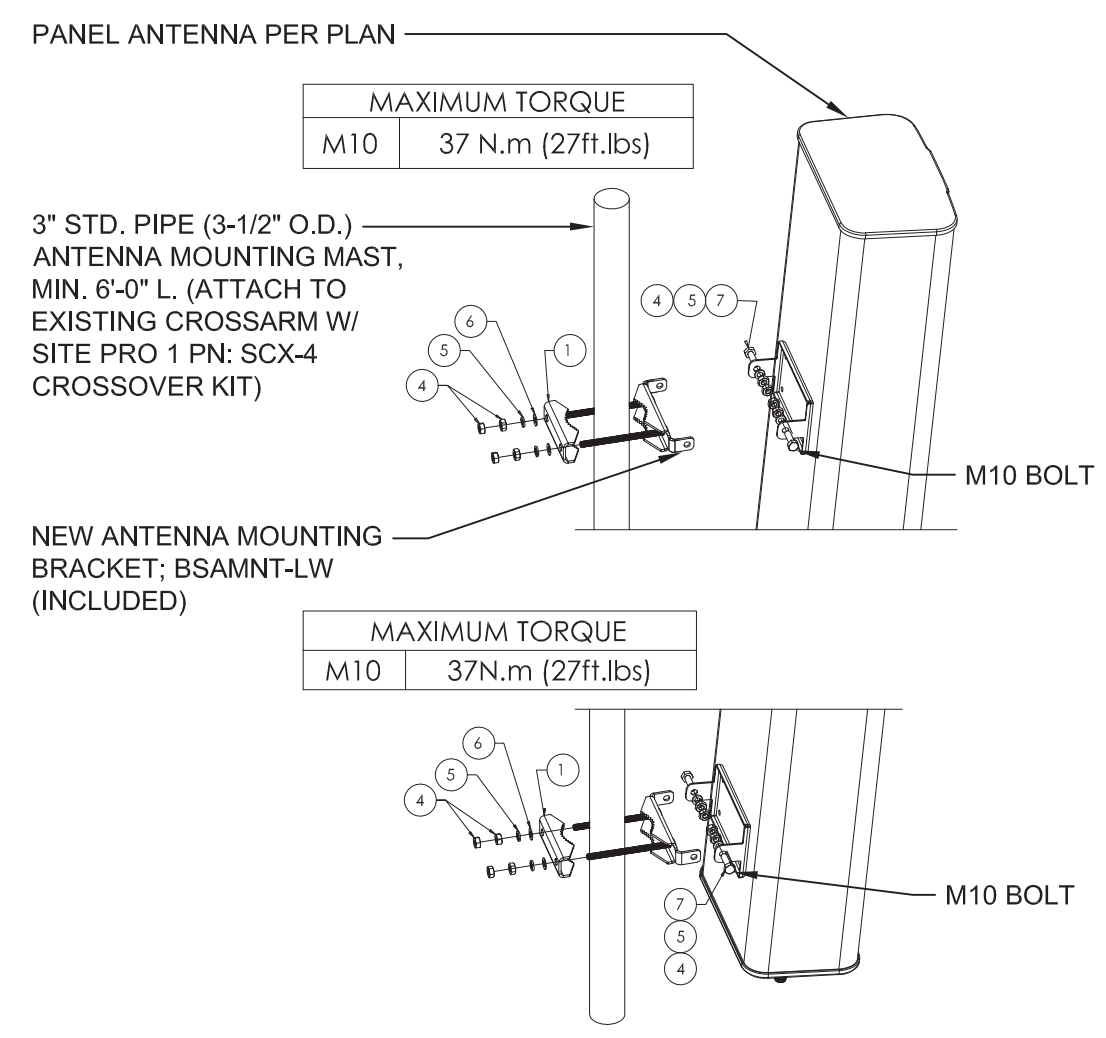
COMMSCOPE SBNHH-1D65A
 DIMENSIONS, HXWXD: 55.6"x11.9"x7.1"
 WEIGHT, WITHOUT PRE-MOUNTED CLAMPS: 33.5 LBS
 WIND LOAD, FRONTAL: 46.3 LBF. @ 150 KM/H.
 WIND LOAD, LATERAL: 38.0 LBF. @ 150 KM/H.
 WIND LOAD, REAR: 46.8 LBF. @ 150 KM/H.



ANTENNA SPECIFICATIONS

ANTENNA MOUNTING DETAIL

ITEM NO.	DESCRIPTION	QUANTITY
1	PIPE CLAMP, LIGHT WEIGHT	2
2	MOUNT PIPE CLAMP, LIGHT WEIGHT	2
3	BOLT CARRIAGE, M10X140, STL, GALV	4
4	NUT, HEX, M10, STL, GALV	20
5	WSHR, LK, SPLT, M10, STL, GALV	10
6	WSHR, FLT, M10, 10, 5X20X2, STL, GALV	4
7	SCR, HCS, HEX, M10X35, STL, GALV	6



FA CODE: FA # 10070274
 DRAWN BY: J.C.
 JOB #: 30097

REV	DATE	DESCRIPTION
1	02/05/2024	100% CD'S - S&S
0	06/27/23	100% CD'S FOR REVIEW
E	04/24/23	95% CD'S UPDATE-RAD CHANGE
D	01/30/23	95% CD'S UPDATE
C	04/28/22	95% CD'S UPDATE
B	03/01/22	90% CD'S UPDATE
A	01/27/22	90% CD'S FOR REVIEW



Digitally signed by Joseph Russell King
 Date: 2024.02.05 17:32:27 -05'00'

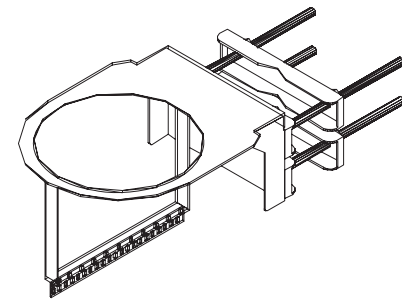
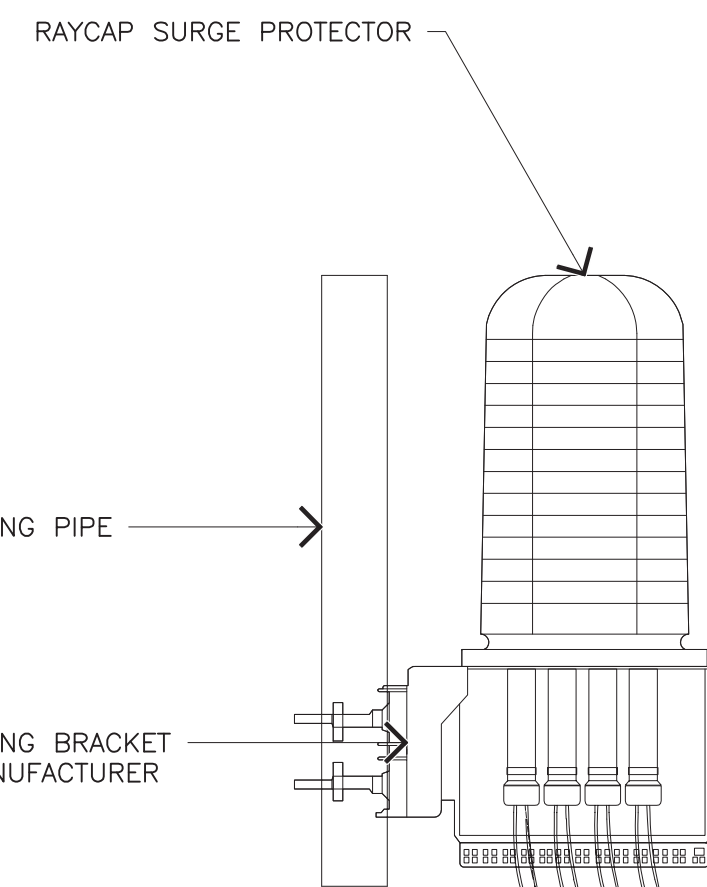
IT IS A VIOLATION OF LAW FOR ANY PERSON, UNLESS THEY ARE ACTING UNDER THE DIRECTION OF A LICENSED PROFESSIONAL ENGINEER, TO ALTER THIS DOCUMENT.

CCL04753
BLACKHAWK
 CORNER OF BLACKHAWK AND EAGLES NEST
 DANVILLE, CALIFORNIA 94506
 FA NUMBER
10070274

SHEET TITLE
DETAILS

SHEET NUMBER
A-5

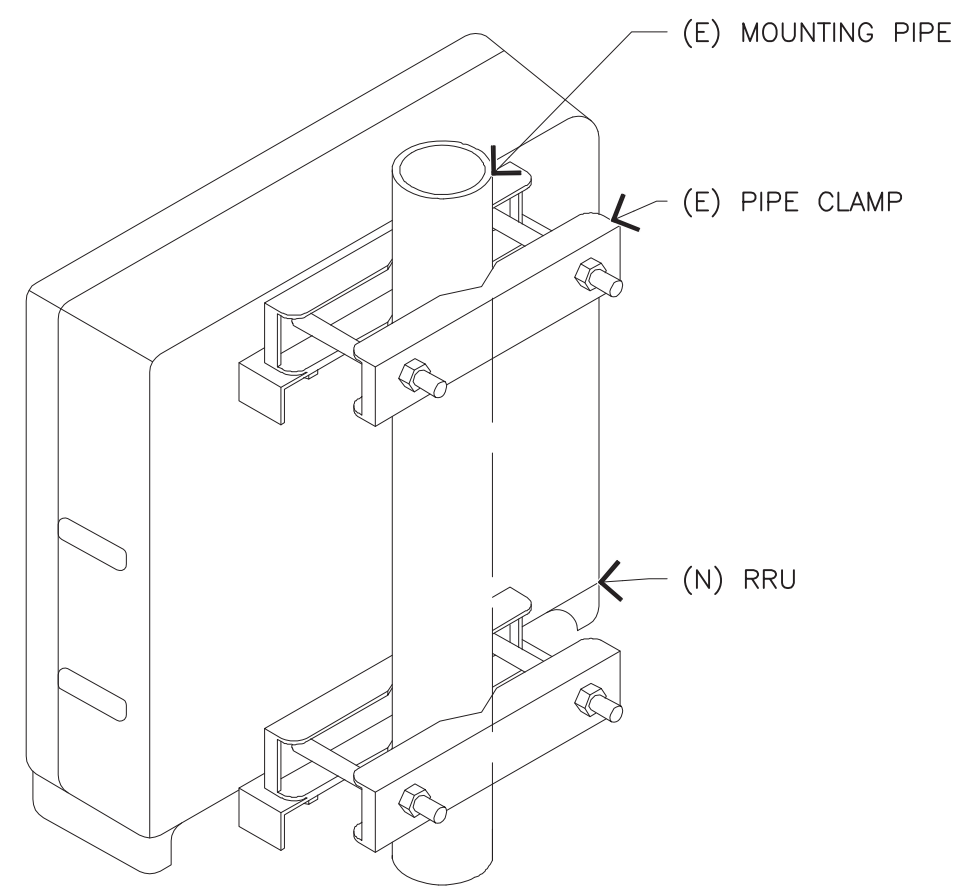
RAYCAP DC9-48-60-24-8C-EV	
DIMENSIONS: L X W X H	18.28" X 20.24" X 31.4"
NOMINAL OPERATING VOLTAGE	-48 VDC
NOMINAL DISCHARGE CURRENT	20 KA 8/20MS
MAXIMUM CONTINUOUS OPERATING VOLTAGE	60 VDC
VOLTAGE PROTECTION RATING:	330 V
TOTAL WEIGHT	26.2 LBS



NOTE: TO BE INSTALLED WITHIN 10 FEET OF RADIO UNIT

SURGE SUPPRESSOR DETAIL

SCALE: NONE **7**



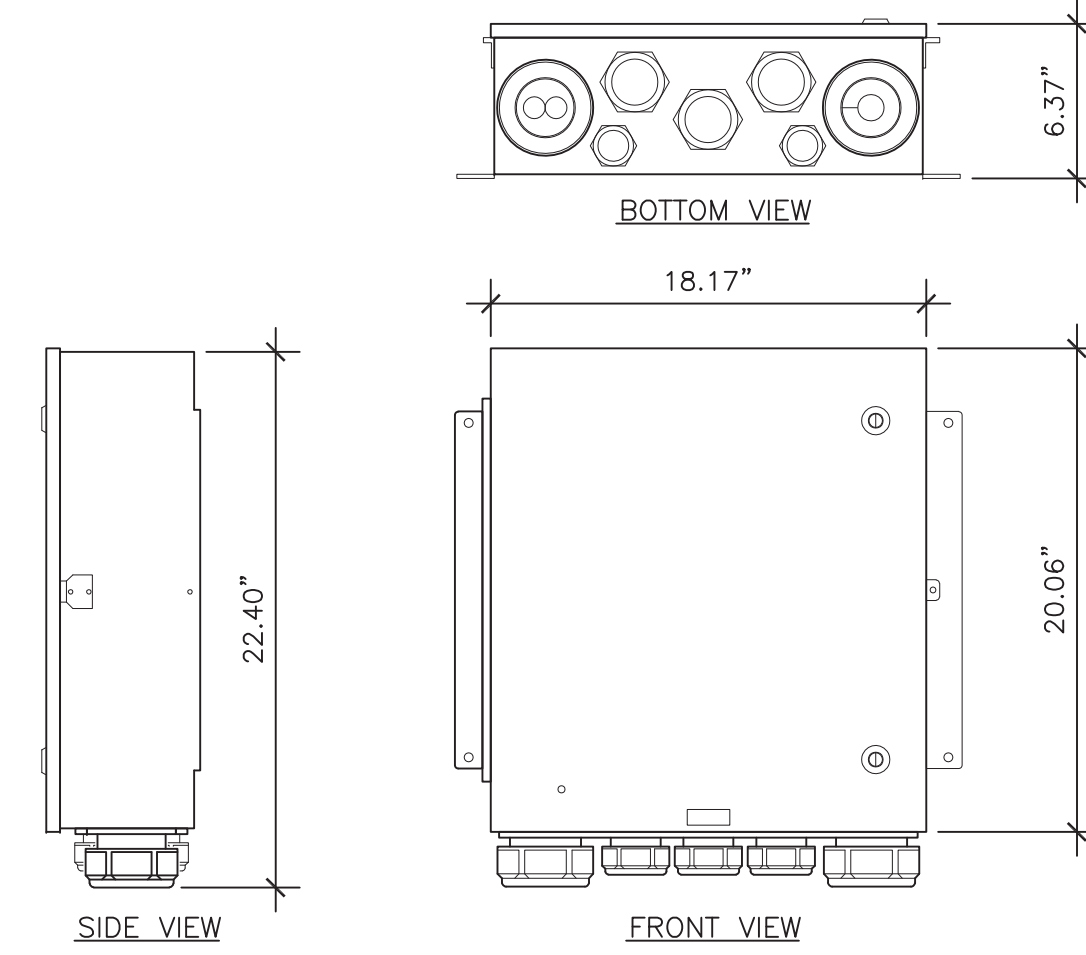
ISO VIEW

RRU MOUNT DETAIL

SCALE: NONE **5**

RAYCAP DC-12-48-60-0-25E

WEIGHT (SYSTEM & MOUNT) : 56.3 LBS
DIMENSIONS, HxWxD : 22.4"x18.17"x6.37"



DC-12 SURGE SUPPRESSOR

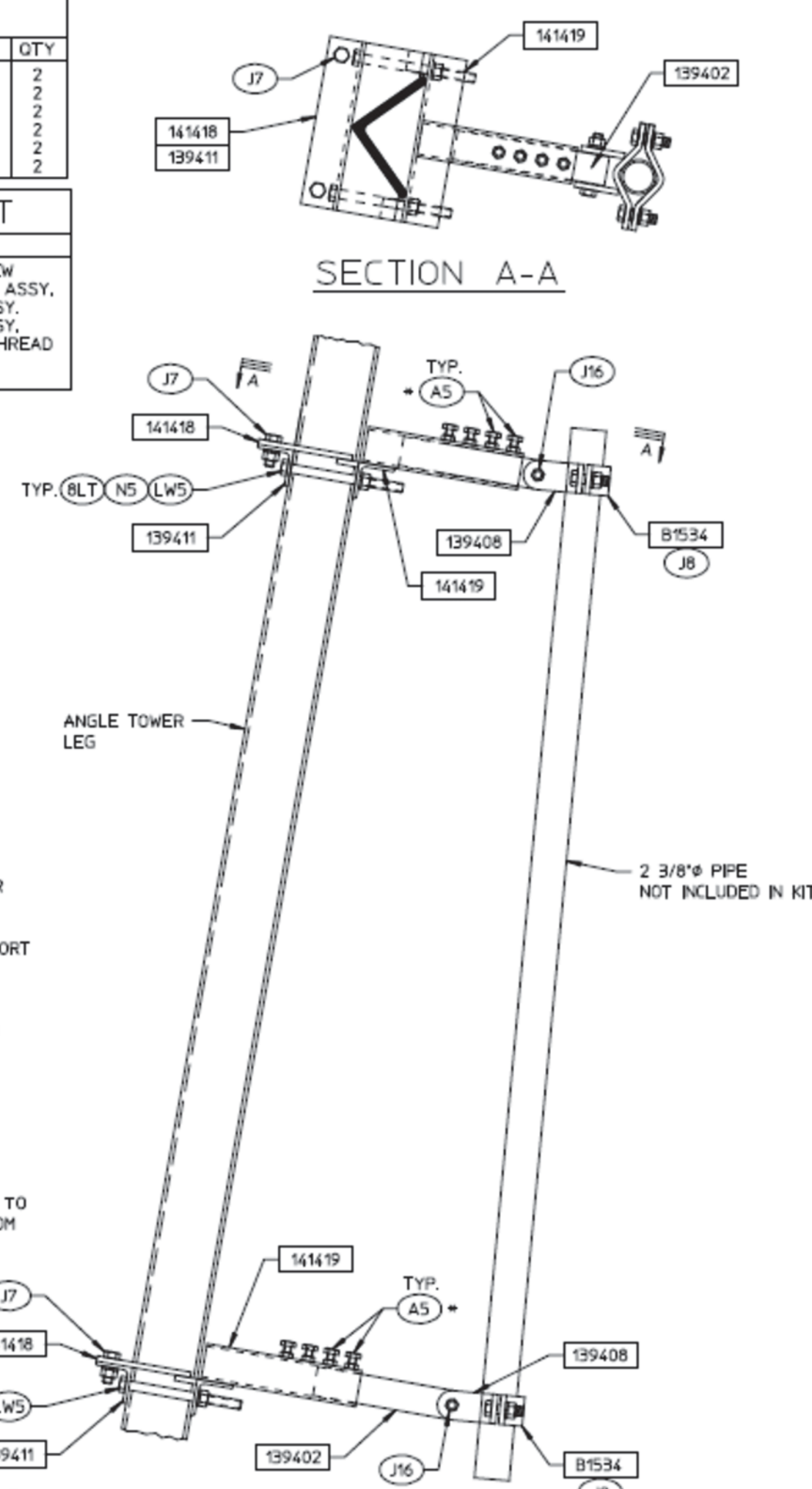
SCALE: NONE **3**

125 KLUG CIRCLE
CORONA, CALIFORNIA 92880

MARK	DESCRIPTION	QTY
141419	BRKT WELDMENT	2
139402	TUBE STEEL	2
139408	BRKT WELDMENT	2
141418	PLATE	2
139411	ANGLE	2
81534	FORMED PLATE	2

SYM	QTY	DESCRIPTION
A5	8	1/2" X 1 1/2" SET SCREW
J7	4	5/8" X 1 3/4" G5 BOLT ASSY.
J6	4	5/8" X 2" G5 BOLT ASSY.
J16	2	5/8" X 4" G5 BOLT ASSY.
BLT	4	5/8" X 8" BOLT W/6' THREAD
NS	4	5/8" NUT
LWS	4	5/8" LOCKWASHER

* A MINIMUM OF 2 SET SCREWS MUST BE IN CONTACT WITH PART NO. '139402'



THIS PRODUCT IS USED TO SUPPORT RRUs ON INSIDE OF TOWER. IT HAS 6" OF ADJUSTMENT TO HELP CLEAR INTERNAL OBSTRUCTIONS.

PRODUCT IS RATED TO SUPPORT THE FOLLOWING LOADS:
350 LB. DEAD LOAD
500 LB. LATERAL WIND LOAD

NOTE: PIPE MOUNT ADJUSTS TO FIT ANGLE TOWER LEGS FROM 2 1/2" TO 6"

INSTALLATION DRAWING
INSIDE MOUNT FOR RRUs
FOR 4-LEG ANGLE TOWERS

BY: AH
CK: MF
DATE: 31MAY15
S.D.

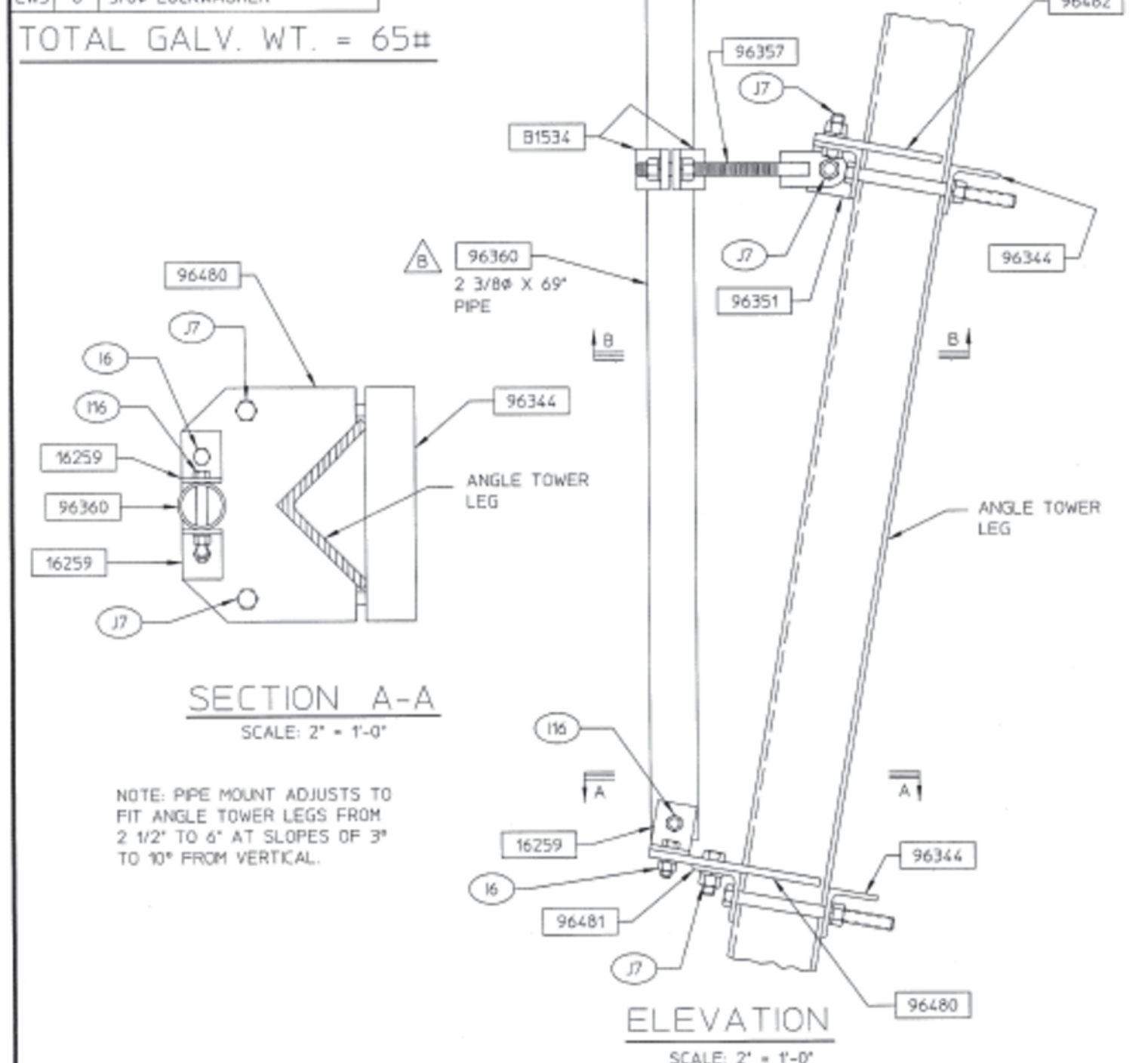
B14145 REINFORCEMENT BRACKET

SCALE: NONE **6**

MARK	DESCRIPTION	QTY
B1709	PIPE MOUNT ASSEMBLY	1
B1534	FORMED PLATE	2
16259	CLIP ANGLE	2
96344	ANGLE: 1T	2
96351	ANGLE WELDMENT	1
96357	THREADED ROD WELDMENT	2
96360	PIPE 2 3/8" X 69"	1
96480	PLATE: 6a	1
96481	ANGLE: 1T	1
96482	PLATE: 6a	1

SYM	QTY	DESCRIPTION
I16	1	1/2" X 4" G5 BOLT ASSY.
J6	2	1/2" X 1 1/2" G5 BOLT ASSY.
J7	6	5/8" X 1 3/4" G5 BOLT ASSY.
BLT	4	5/8" X 8" BOLT W/6' THREAD
NS	8	5/8" NUT
LWS	8	5/8" LOCKWASHER

TOTAL GALV. WT. = 65#



NOTE: PIPE MOUNT ADJUSTS TO FIT ANGLE TOWER LEGS FROM 2 1/2" TO 6" AT SLOPES OF 3" TO 10" FROM VERTICAL.

31-B1709
PCS PIPE MOUNT ASSEMBLY
FOR 4-LEG ANGLE TOWERS

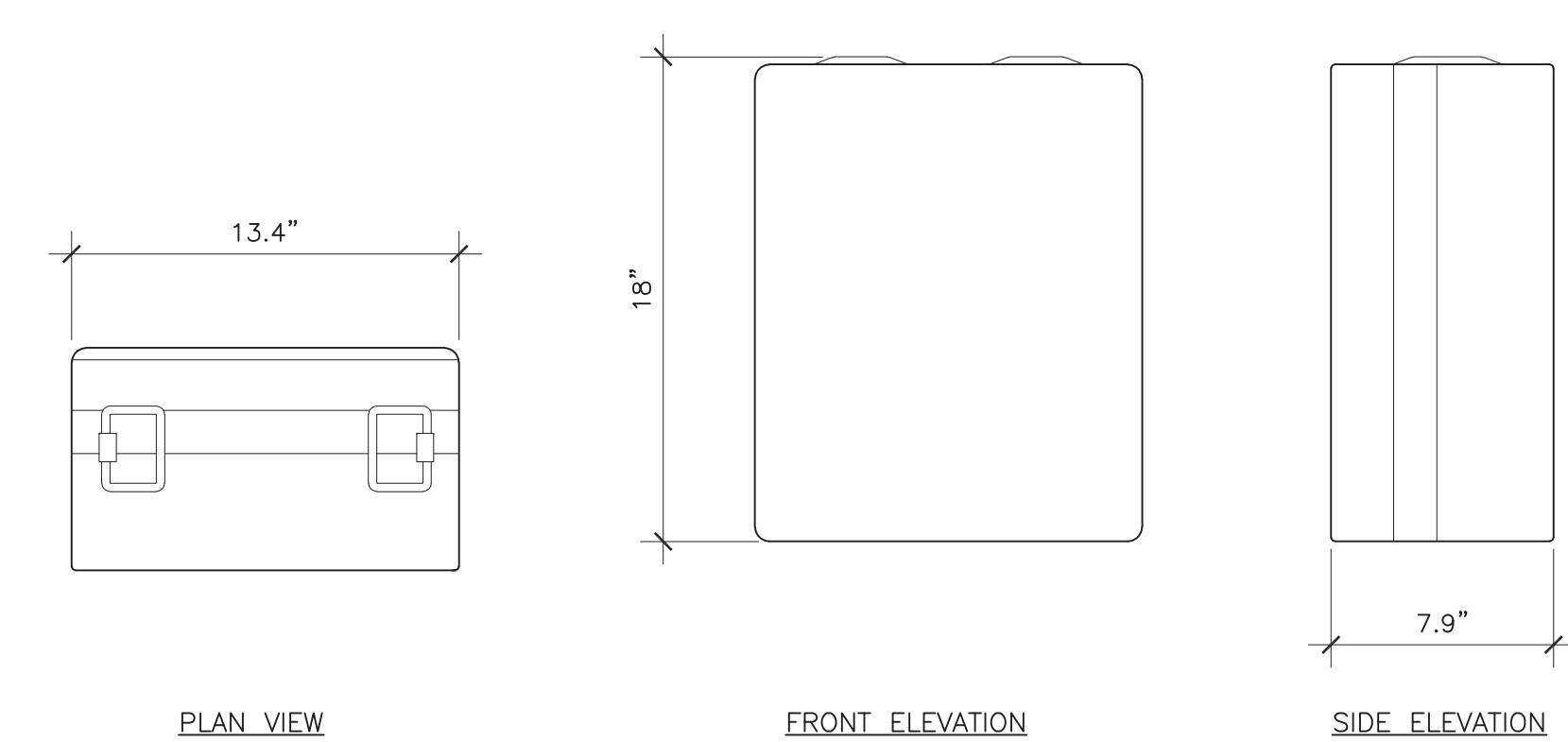
BY: PH
CK: GS
DATE: 30JAN97
S.D.

B1709 BRACKET

SCALE: NONE **4**

ERICSSON 4478 B12A

COLOR: GRAY
DIMENSIONS, HxWxD: 18.0"x13.4"x7.9"
WEIGHT: 57.2 LBS.

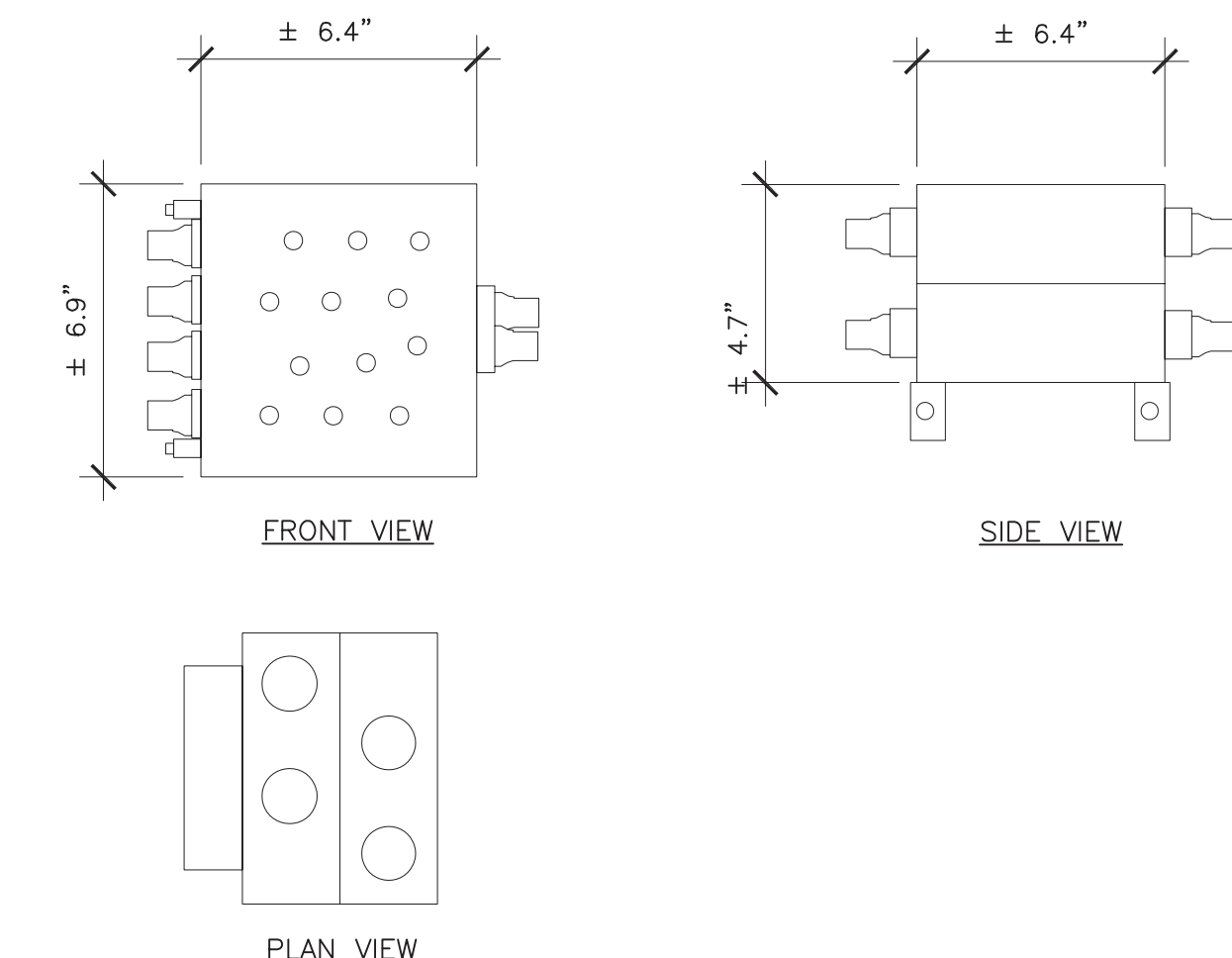


RRU DETAIL

SCALE: NONE **2**

CBC78T-DS-43-2X DIPLEXER

DIMENSIONS, HxWxD: 6.4"x6.9"x4.7"
WEIGHT: 20.723 LBS



DIPLEXER DETAIL

SCALE: NONE **1**

FA CODE:	FA # 10070274
DRAWN BY:	J.C
JOB #:	30097

REV	DATE	DESCRIPTION
1	02/05/2024	100% CD'S - S&S
0	06/27/23	100% CD'S FOR REVIEW
E	04/24/23	95% CD'S UPDATE-RAD CHANGE
D	01/30/23	95% CD'S UPDATE
C	04/28/22	95% CD'S UPDATE
B	03/01/22	90% CD'S UPDATE
A	01/27/22	90% CD'S FOR REVIEW

Digitally signed by Joseph Russell King
Date: 2024.02.05 17:32:43 -05'00'

IT IS A VIOLATION OF LAW FOR ANY PERSON, UNLESS THEY ARE ACTING UNDER THE DIRECTION OF A LICENSED PROFESSIONAL ENGINEER, TO ALTER THIS DOCUMENT.

CCL04753
BLACKHAWK
CORNER OF BLACKHAWK AND EAGLES NEST
DANVILLE, CALIFORNIA 94506
FA NUMBER
10070274

SHEET TITLE
DETAILS

SHEET NUMBER
A-5.1



125 KLUG CIRCLE
CORONA, CALIFORNIA 92880

NOT USED

SCALE: 5
NONE

NOT USED

SCALE: 3
NONE



From the World Leader in VRLA Battery Technology

Designed for durability in Telecommunications and Electric Utility applications, the GNB® Industrial Power Front Terminal MARATHON® series provides high performance and reliability in long duration discharge applications. The location of the terminals on the front (vs. the top) of the battery greatly facilitates the installation and maintenance of the product when placed in a cabinet enclosure or on a standard relay rack tray. The MARATHON® Front Terminal battery series highlights another example of GNB's extensive experience and worldwide leadership in VRLA technology.

"Designed-in" Quality Manufacturing

Quality manufacturing processes for the MARATHON® series batteries incorporate the industry's most advanced technologies including: an automated helium leak detection system, a computer controlled "fill by weight" acid filler, and a temperature controlled water bath formation process. Each and every unit is capacity tested.

High Performance MARATHON® Features

- Patented "Diamond Side-Wall" Design maintains structural integrity in higher operating temperatures
- Durable Flame Retardant Polypropylene Container and Cover complies with UL94 V-0; 28% L.O.I.
- Carry Handles facilitate ease of installation
- High-Compression Absorbent Glass Mat (AGM) Technology ensures greater than 99% recombination efficiency
- Integrated Flash Arrestor ultrasonically welded into cover for secure and safe protection
- 10 Year Design Life in float applications @ 25°C (77°F); 12 year @ 20°C (68°F)
- Superior Lead-Tin-Calcium Positive Alloy helps to resist corrosion
- Higher Vent Opening Pressure minimizes unnecessary gassing; one-way self resealing device
- Front Accessible Copper Alloy, 6 mm, Female Terminals ensures low resistance, high integrity connections
- "Easy On/Easy Off" Terminal Post Protector provides added safety
- Post Design accommodates voltage/diagnostic probes
- Footprint Ready fits in all standard 23" Relay Rack Applications
- Compliance: Designed in accordance with IEC 60896-21/-22
- No Transport Restrictions: Complies with IATA/ICAO Special Provision A67; DOT-CFR Title 49; IMDG Amendment 34-08

Applications

MARATHON® Batteries incorporate GNB's advanced VRLA technology designed for long life and high performance in:

Telecommunications

- Distributed Power
- PCS
- Cellular
- Broadband

Electric Utility

- Switchgear Control Power
- Communications

UPS

- Industrial Long Duration



UL Recognized Component

MARATHON FRONT TERMINAL SPECIFICATIONS

MODEL NUMBER	VOLTAGE	CAPACITY (AH)		NOMINAL DIMENSIONS INCHES			NOMINAL DIMENSIONS MILLIMETERS			NOMINAL WEIGHT LBS. KG.	
		8HR TO 1.75 VPC @ 25°C	10HR TO 1.75 VPC @ 20°C	A	B	C	A	B	C		
M12V90FT	12	86	86	15.55	4.13	10.63	395	105	270	79	35.8
M12V105FT	12	104	100	20.12	4.33	9.38	511	110	238	79	35.8
M12V125FT	12	125	121	22.00	4.90	11.15	559	124	283	105	47.6
M12V155FT	12	155	150	22.00	4.90	11.15	559	124	283	119	53.8
M12V180FT	12	180	175	22.00	4.90	12.50	559	124	318	133	60

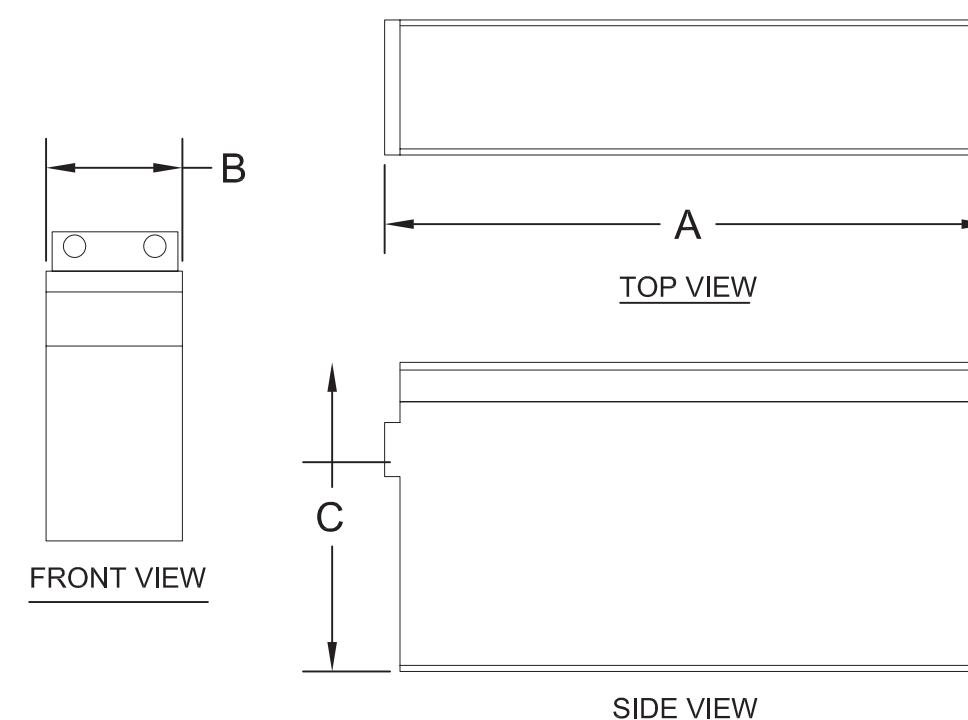
*1 BATTERY STRING = 4 BATTERY UNITS

BATTERY STORAGE SYSTEM THRESHOLD QUANTITIES	
BATTERY MODEL NUMBER	M12V155FT
BATTERY VOLTAGE	12V
BATTERY TECHNOLOGY	LEAD ACID
QUANTITY OF EXISTING BATTERIES	4 STRINGS (16 BATTERIES)
QUANTITY OF NEW BATTERIES	1 STRING (4 BATTERIES)
QUANTITY OF TOTAL BATTERIES	5 STRINGS (20 BATTERIES)
EXISTING BATTERY STORAGE SYSTEM CAPACITY	155AH PER BATTERY
NEW BATTERY STORAGE SYSTEM CAPACITY	155AH PER BATTERY
NEW BATTERY STORAGE SYSTEM CAPACITY (V*AH)/1000	37.2 KWH

* TOTAL VOLUME IS LESS THAN 70KWH, WHICH DOES NOT EXCEED ENERGY CAPACITY THRESHOLD PER CFC SECTION 1207, THEREFORE NO ADDITIONAL ENERGY STORAGE NEEDED.

CALIFORNIA FIRE CODE 2022 TABLE 1207.1.1 ENERGY STORAGE SYSTEM (ESS) THRESHOLD QUANTITIES	
TECHNOLOGY	ENERGY CAPACITY ^a
Lead-acid batteries, all types	70 kWh (252 Megajoules) ^b
Nickel-cadmium batteries (Ni-Cd)	70 kWh (252 Megajoules)
Nickel-metal hydride (Ni-MH)	70 kWh (252 Megajoules)
Lithium-ion batteries	20 kWh (72 Megajoules)
Flow batteries ^b	20 kWh (72 Megajoules)
Other battery technologies	10 kWh (36 Megajoules)
Capacitor ESS	3 kWh (10.8 Megajoules)
Other electrochemical ESS technologies	3 kWh (10.8 Megajoules)

For Si: 1 kilowatt hour = 3.6 megajoules.
^a Energy capacity is the total energy capable of being stored (nameplate ratings), not the usable energy rating. For units rated in Amp-hours, kWh shall equal rated voltage multiplied by the amp-hour rating divided by 1000.
^b Shall include vanadium, zinc-bromine, polysulfide-bromide, and other flowing electrolyte type technologies.
^c 50 gallons of lead-acid battery electrolyte shall be considered equivalent to 70 kWh.



MODEL NUMBER	SHORT CIRCUIT CURRENT AMPS	INTERNAL RESISTANCE (mOhms)
M12V90FT	2358	4.5
M12V105FT	3125	4.0
M12V125FT	2814	3.2
M12V155FT	3883	3.0
M12V180FT	4147	3.0

FLOAT VOLTAGE & CHARGING
 CONSTANT VOLTAGE CHARGING IS RECOMMENDED.
 RECOMMENDED FLOAT VOLTAGE: 2.27 VPC @ 25°C (77°F)
 FLOATED VOLTAGE RANGE: 2.25 TO 2.30 VPC @ 25°C (77°F)
 EQUALIZE VOLTAGE: 2.35 VPC FOR 24 HOURS OR
 EQUALIZE VOLTAGE: 2.40 VPC FOR 12 HOURS

NOTE:
 DESIGN AND/OR SPECIFICATIONS SUBJECT TO CHANGE WITHOUT NOTICE. IF QUESTIONS ARISE, CONTACT YOUR LOCAL GNB SALES REPRESENTATIVE FOR CLARIFICATION.

BASEBAND 6673

DIMENSIONS, HXWXD: 2.59"x17.5"x9.05"
 WEIGHT: 20.9 LBS



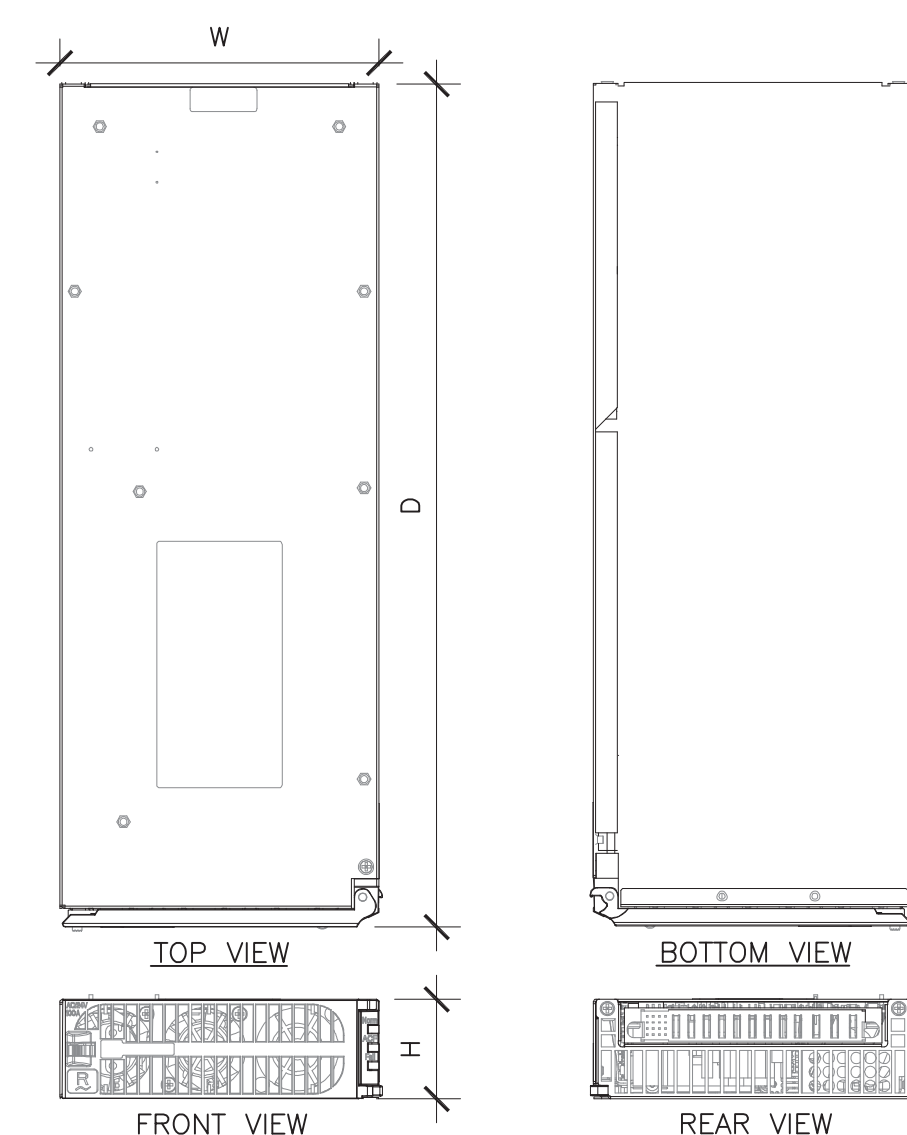
FRONT VIEW

6648 BASEBAND UNIT

SCALE: 2
NONE

INFINITY RECTIFIER

MODEL: NE050AC48ATEZ
 HEIGHT: 1.63" WIDTH: 5.23"
 DEPTH: 13.85" WEIGHT: 5.95 LBS



BATTERY SPECIFICATIONS AND CAPACITIES

SCALE: 4
NONE

INFINITY RECTIFIER DETAIL

SCALE: 1
NONE

FA CODE: FA # 10070274

DRAWN BY: J.C

JOB #: 30097

REV	DATE	DESCRIPTION
1	02/05/2024	100% CD'S - S&S
0	06/27/23	100% CD'S FOR REVIEW
E	04/24/23	95% CD'S UPDATE-RAD CHANGE
D	01/30/23	95% CD'S UPDATE
C	04/28/22	95% CD'S UPDATE
B	03/01/22	90% CD'S UPDATE
A	01/27/22	90% CD'S FOR REVIEW



Digitally signed by Joseph Russell King Date: 2024.02.05 17:33:02 -05'00'

IT IS A VIOLATION OF LAW FOR ANY PERSON, UNLESS THEY ARE ACTING UNDER THE DIRECTION OF A LICENSED PROFESSIONAL ENGINEER, TO ALTER THIS DOCUMENT.

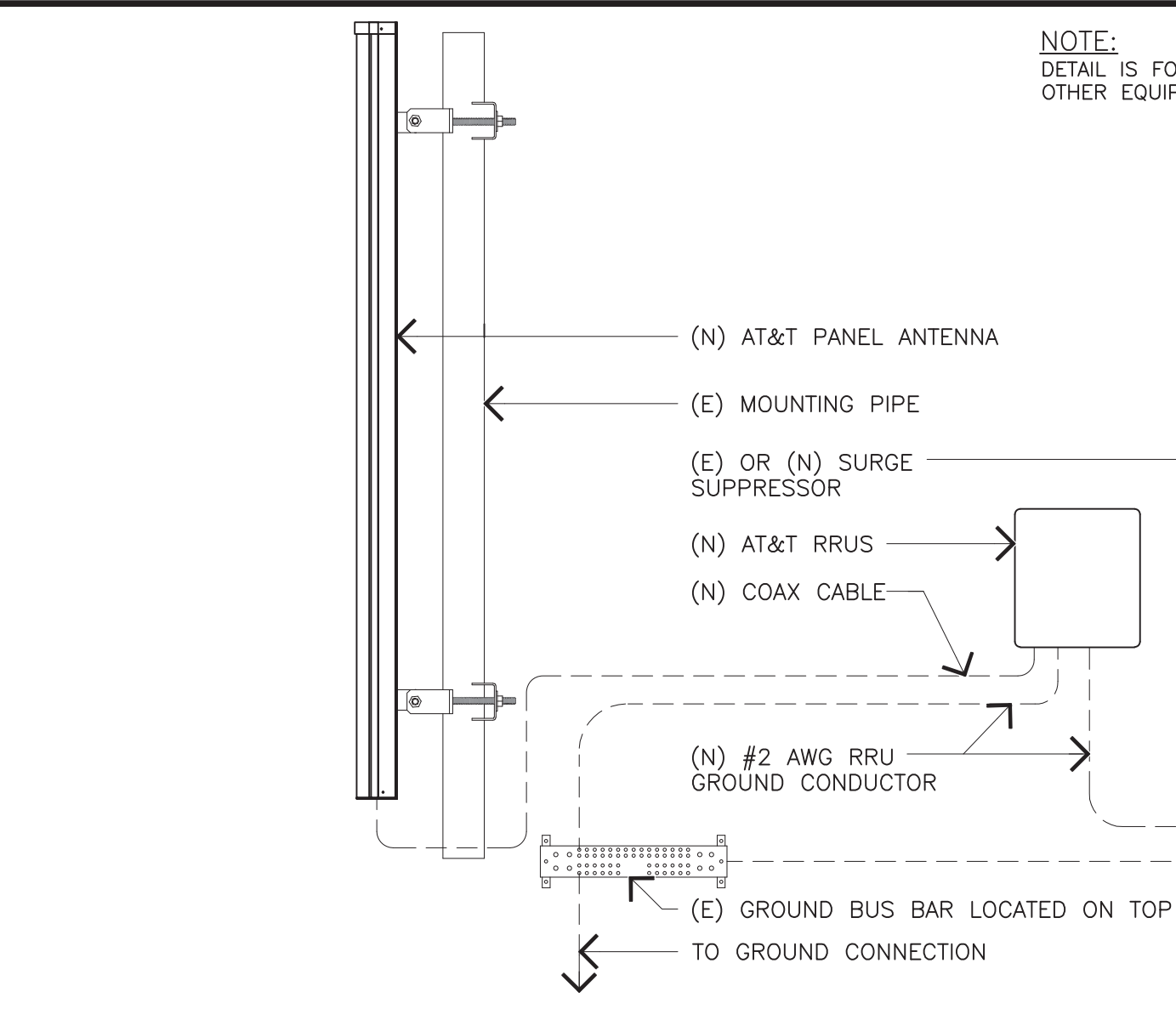
CCL04753
BLACKHAWK
 CORNER OF BLACKHAWK AND EAGLES NEST
 DANVILLE, CALIFORNIA 94506
 FA NUMBER
10070274

SHEET TITLE
GROUNDING DETAILS

SHEET NUMBER
A-5.2

NOT USED

SCALE:
NONE



SCALE:
NONE

125 KLUG CIRCLE
CORONA, CALIFORNIA 92880

NOT USED

SCALE:
NONE

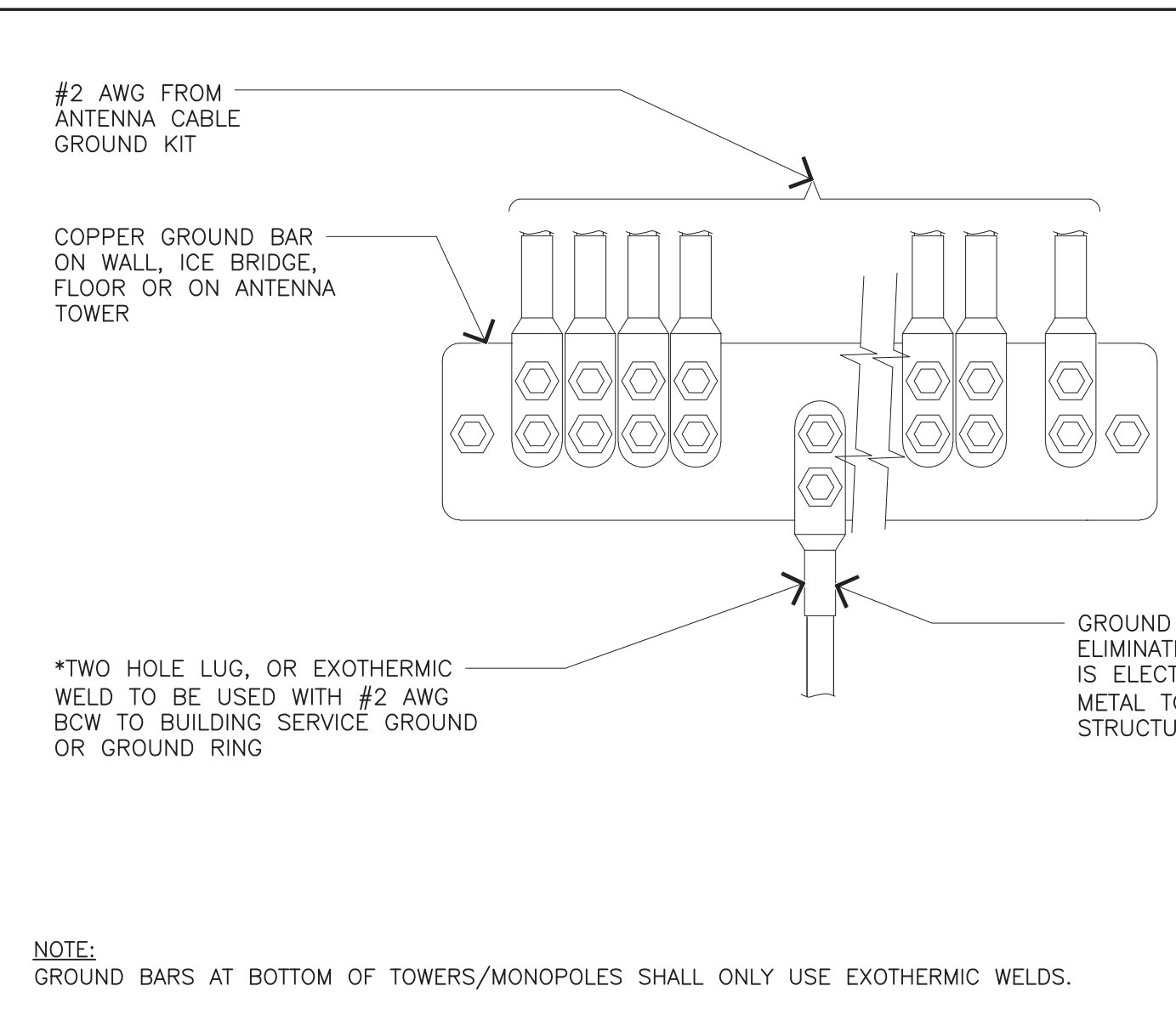
5 ANTENNA/RRU CONNECTION

SCALE:
NONE

3

NOT USED

SCALE:
NONE



SCALE:
NONE

FA CODE: FA # 10070274
DRAWN BY: J.C.
JOB #: 30097

REV	DATE	DESCRIPTION
1	02/05/2024	100% CD'S - S&S
0	06/27/23	100% CD'S FOR REVIEW
E	04/24/23	95% CD'S UPDATE-RAD CHANGE
D	01/30/23	95% CD'S UPDATE
C	04/28/22	95% CD'S UPDATE
B	03/01/22	90% CD'S UPDATE
A	01/27/22	90% CD'S FOR REVIEW

NOT USED

SCALE:
NONE

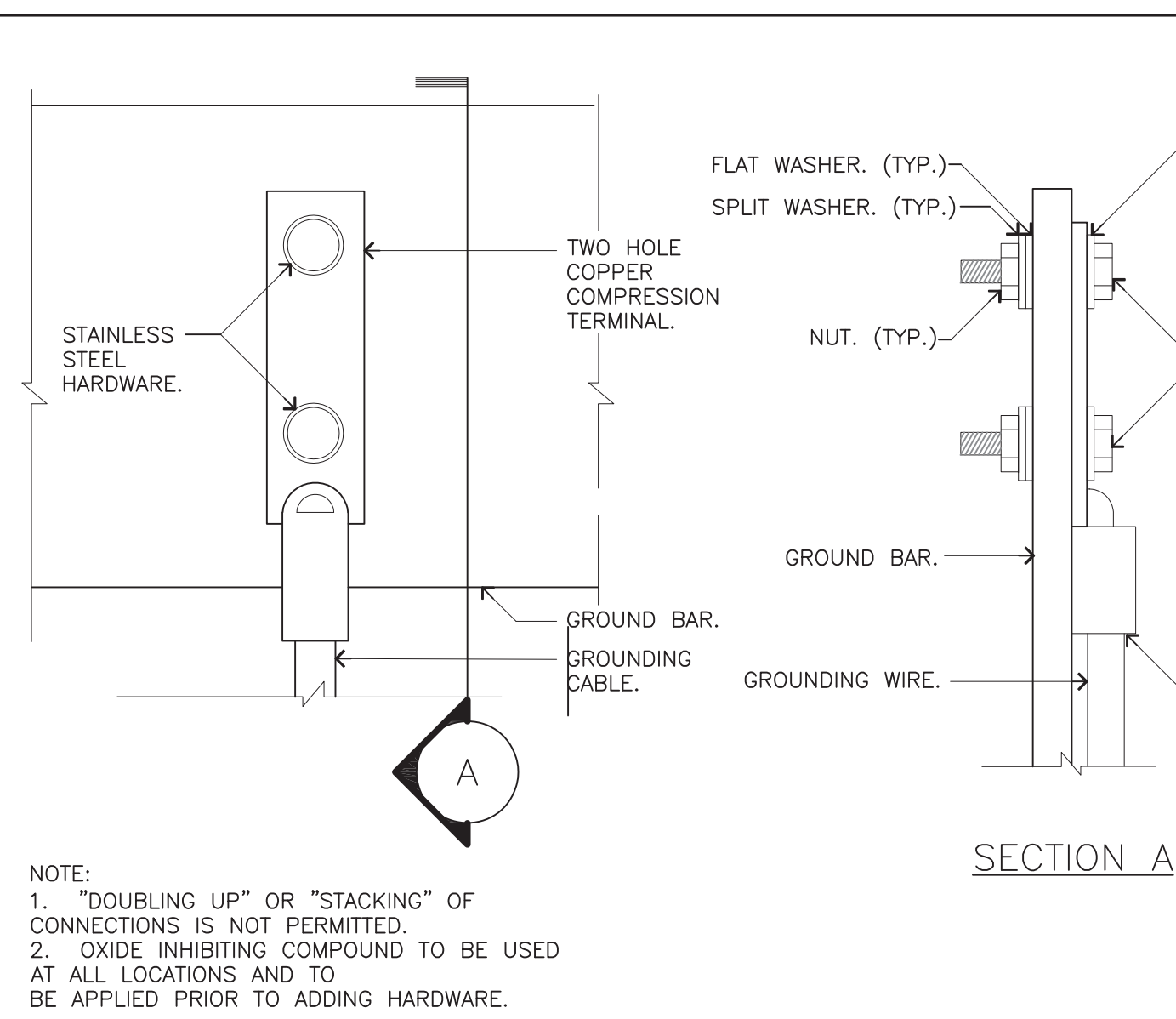
2 WIRE TO GROUND BAR CONNECTION

SCALE:
NONE

2

NOT USED

SCALE:
NONE



SCALE:
NONE

Digitally signed by Joseph Russell King
Date: 2024.02.05 17:33:17 -05'00'

IT IS A VIOLATION OF LAW FOR ANY PERSON, UNLESS THEY ARE ACTING UNDER THE DIRECTION OF A LICENSED PROFESSIONAL ENGINEER, TO ALTER THIS DOCUMENT.

CCL04753
BLACKHAWK
CORNER OF BLACKHAWK AND EAGLES NEST
DANVILLE, CALIFORNIA 94506
FA NUMBER
10070274

SHEET TITLE
GROUNDING DETAILS

SHEET NUMBER
G-1

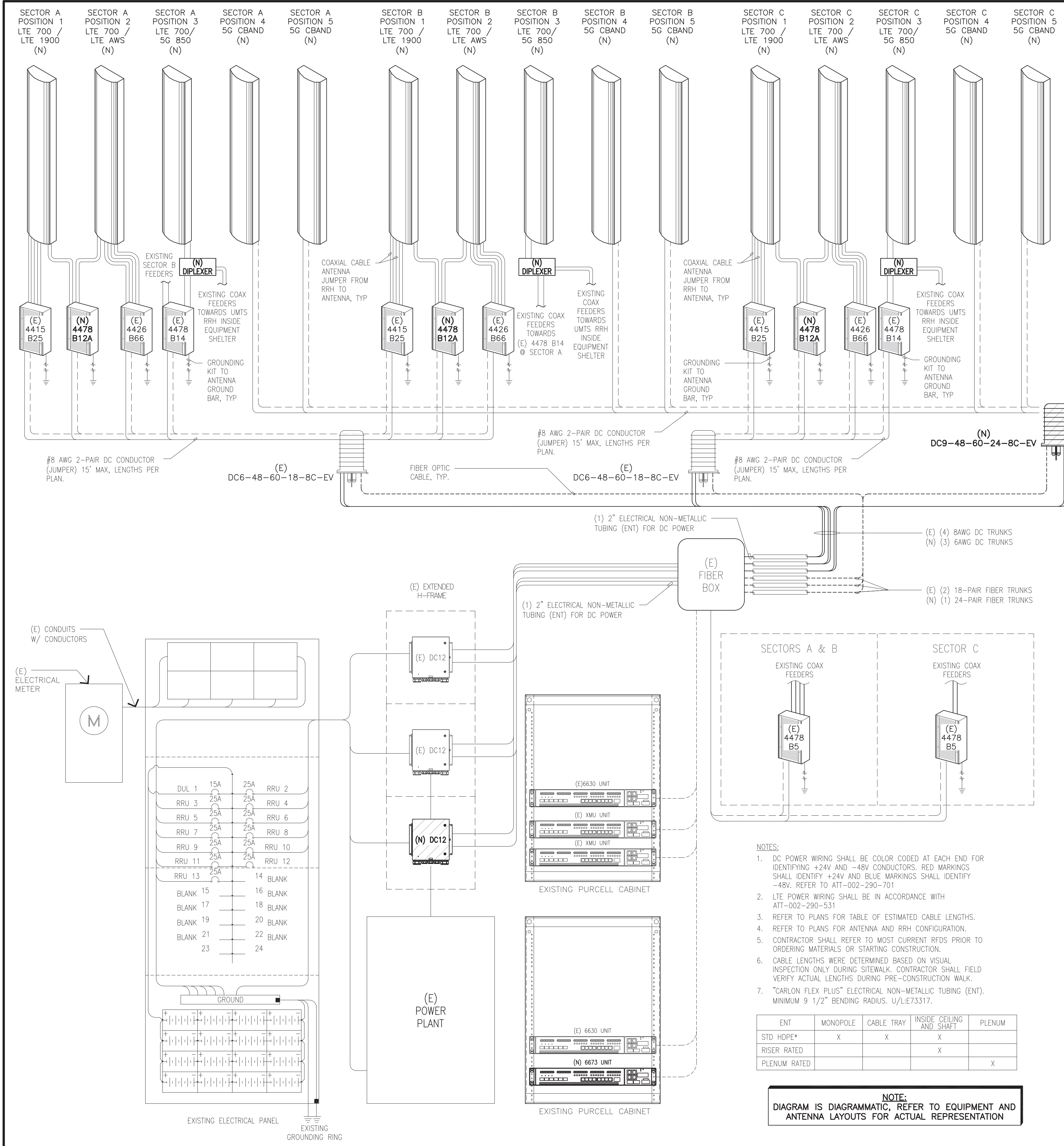
NOT USED

SCALE:
NONE

4 GROUND BAR CONNECTION

SCALE:
NONE

1



PER SPCT COMPLETED ON: 11-08-2021

- (E) GE/INFINITY RBA72 POWER PLANT : (1) TOTAL
- (E) GE/INFINITY -48 RECTIFIERS (4) TOTAL
- (N) GE/INFINITY -48 RECTIFIERS (4) TOTAL (8) REQUIRED
- (E) STRINGS 155AH BATTERIES (3) TOTAL
- (E) BATTERY BACK UP CABINET : (1) TOTAL
- (E) STRINGS 155AH BATTERIES (1) TOTAL
- (N) STRINGS 155AH BATTERIES (1) TOTAL
- (5) TOTAL STRINGS 155AH BATTERIES FOR 4.00 HOURS BACK UP.
- VERTIV
- N/A
- DC TRUNK CALCULATOR RAN, NO VERTIV UP CONVERTERS REQUIRED FOR NEW 4478 B12 RADIOS OR NEW AIR ANTENNAS ON NEW #6 DC TRUNKS.
- IF THERE IS ANY DISCREPANCY FOUND AT C1025 PLEASE CONTACT BERNARD NAIDU IMMEDIATELY

POWER PLANT/BATTERY DETAILS

SCALE: 2
NONE

FINAL TOWER MOUNTED EQUIPMENT

- ABOVE CONDUCTOR
- (9) ANTENNAS
 - (8) RRHS
 - (2) SQUIDS
 - (2) 2" INNERDUCT CONDUITS
 - (4) 8AWG POWER TRUNKS (IN INNERDUCT) (EXISTING)
 - (1) 18 PAIR FIBER TRUNKS (IN INNERDUCT)
 - (36) 1/2" ANTENNA JUMPERS
 - (12) 1 5/8" COAX MAINLINES

BELOW CONDUCTOR

- (6) ANTENNAS
- (3) RRHS
- (1) SQUIDS
- (2) 2" INNERDUCT CONDUITS
- (3) 6AWG POWER TRUNKS (IN INNERDUCT) (NEW)
- (1) 24 PAIR FIBER TRUNKS (IN INNERDUCT) (NEW)
- (12) 1/2" ANTENNA JUMPERS TO ABOVE CONDUCTOR ANTENNAS

- NOTES:
- DC POWER WIRING SHALL BE COLOR CODED AT EACH END FOR IDENTIFYING +24V AND -48V CONDUCTORS. RED MARKINGS SHALL IDENTIFY +24V AND BLUE MARKINGS SHALL IDENTIFY -48V. REFER TO ATT-002-290-701
 - LTE POWER WIRING SHALL BE IN ACCORDANCE WITH ATT-002-290-531
 - REFER TO PLANS FOR TABLE OF ESTIMATED CABLE LENGTHS.
 - REFER TO PLANS FOR ANTENNA AND RRH CONFIGURATION.
 - CONTRACTOR SHALL REFER TO MOST CURRENT RFDS PRIOR TO ORDERING MATERIALS OR STARTING CONSTRUCTION.
 - CABLE LENGTHS WERE DETERMINED BASED ON VISUAL INSPECTION ONLY DURING SITEWALK. CONTRACTOR SHALL FIELD VERIFY ACTUAL LENGTHS DURING PRE-CONSTRUCTION WALK.
 - "CARLON FLEX PLUS" ELECTRICAL NON-METALLIC TUBING (ENT). MINIMUM 9 1/2" BENDING RADIUS. U/LE73317.

ENT	MONOPOLE	CABLE TRAY	INSIDE CEILING AND SHAFT	PLENUM
STD HDPE*	X	X	X	
RISER RATED			X	
PLENUM RATED				X

NOTE:
DIAGRAM IS DIAGRAMMATIC. REFER TO EQUIPMENT AND ANTENNA LAYOUTS FOR ACTUAL REPRESENTATION

SINGLE LINE DIAGRAM

SCALE: 3
NONE

FINAL TOWER EQUIPMENT COUNT

SCALE: 1
NONE



125 KLUG CIRCLE
CORONA, CALIFORNIA 92880

FA CODE: FA # 10070274
DRAWN BY: J.C
JOB #: 30097

REV	DATE	DESCRIPTION
1	02/05/2024	100% CD'S - S&S
0	06/27/23	100% CD'S FOR REVIEW
E	04/24/23	95% CD'S UPDATE-RAD CHANGE
D	01/30/23	95% CD'S UPDATE
C	04/28/22	95% CD'S UPDATE
B	03/01/22	90% CD'S UPDATE
A	01/27/22	90% CD'S FOR REVIEW



Digitally signed by Joseph Russell King
Date: 2024.02.05 17:33:32 -05'00'

IT IS A VIOLATION OF LAW FOR ANY PERSON, UNLESS THEY ARE ACTING UNDER THE DIRECTION OF A LICENSED PROFESSIONAL ENGINEER, TO ALTER THIS DOCUMENT.

CCL04753
BLACKHAWK
CORNER OF BLACKHAWK AND EAGLES NEST
DANVILLE, CALIFORNIA 94506
FA NUMBER
10070274

SHEET TITLE
ELECTRICAL & LTE SCHEMATIC DIAGRAM

SHEET NUMBER
E-1