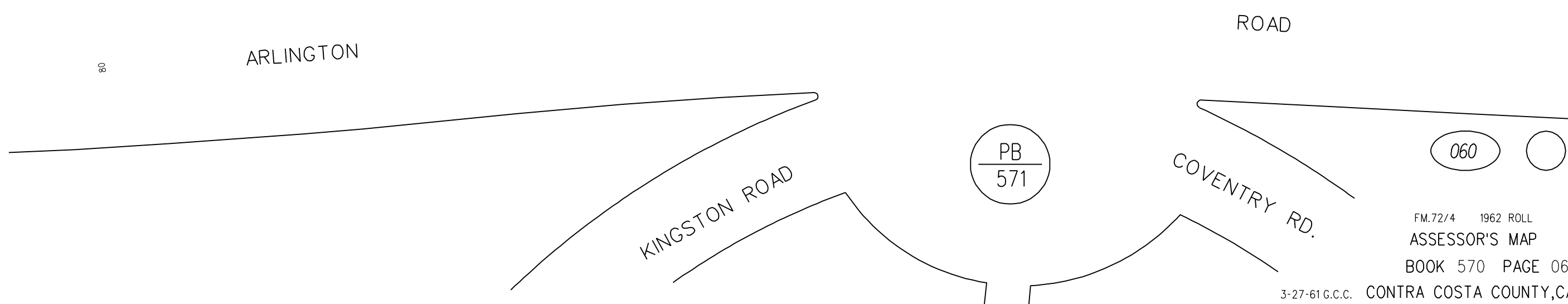
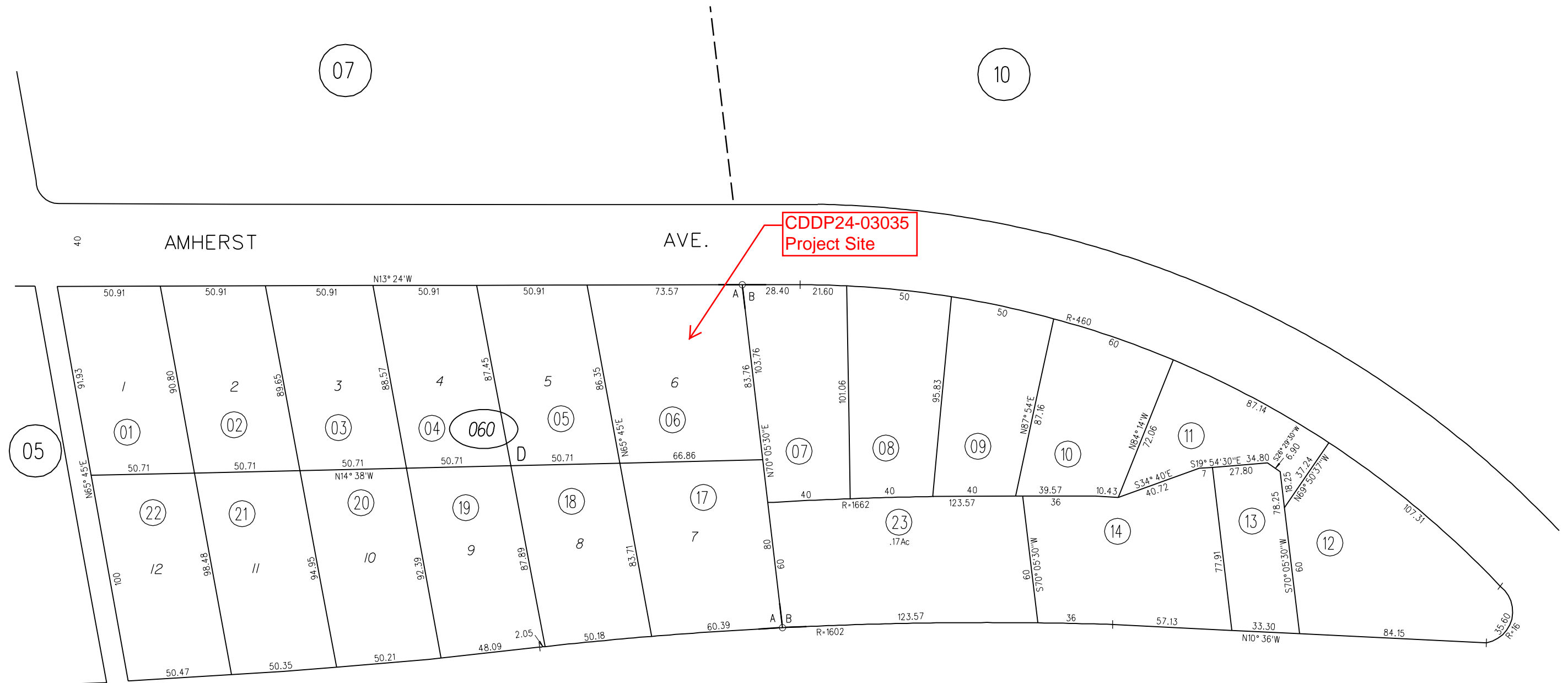
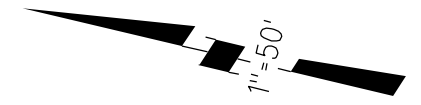


A- BERKELEY HIGHLANDS,BLOCK D M.B.6-150  
B- POR.LOT 2,RANCHO SAN PABLO

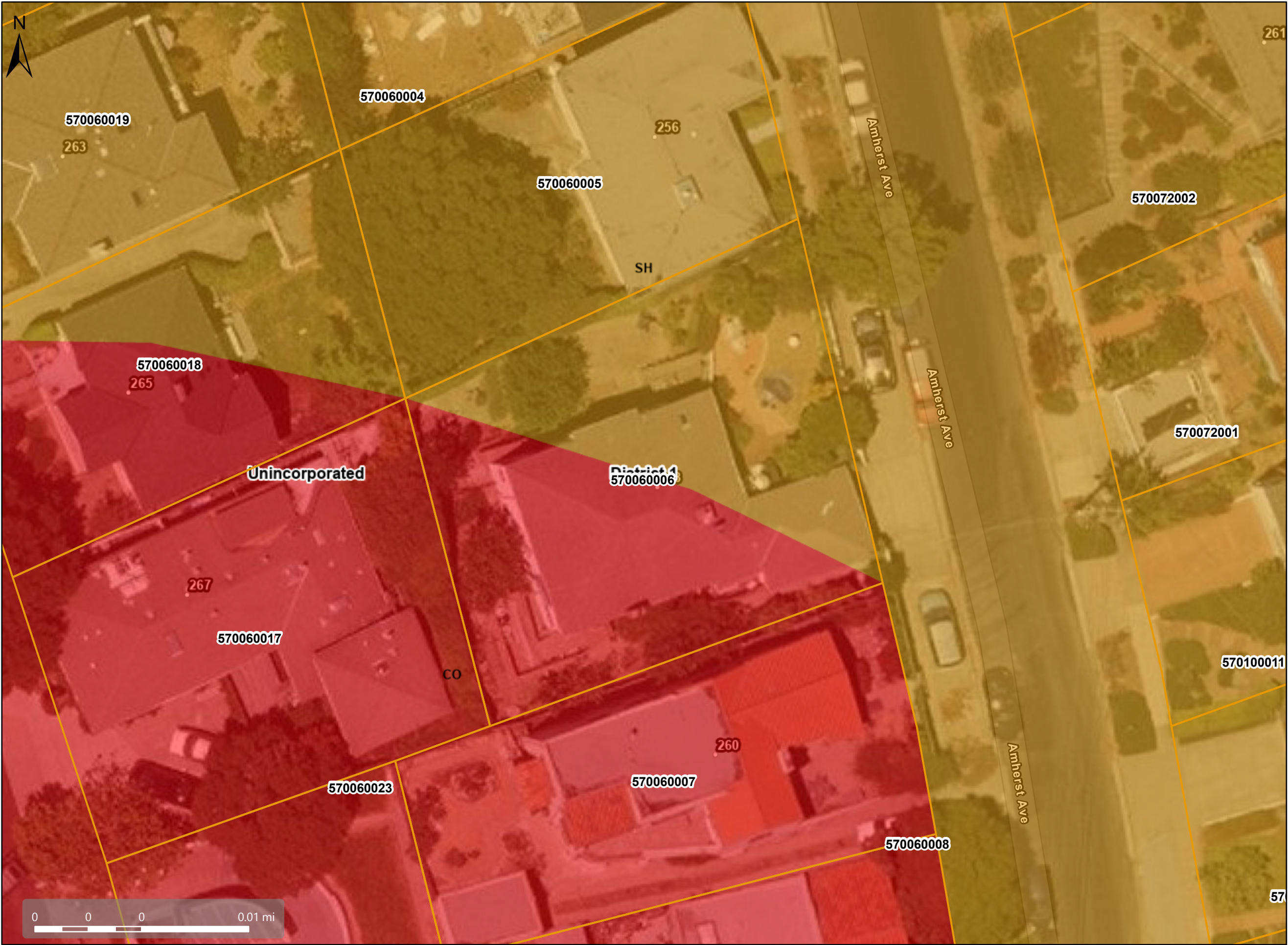
TAX CODE AREA







General Plan



Map Legend

- Assessment Parcels
- General Plan
  - SH (Single Family Residential - High) 5.0 - 7.2 Units per Net Acre
  - CO (Commercial) Unincorporated
- Board of Supervisors' Districts
- Address Points

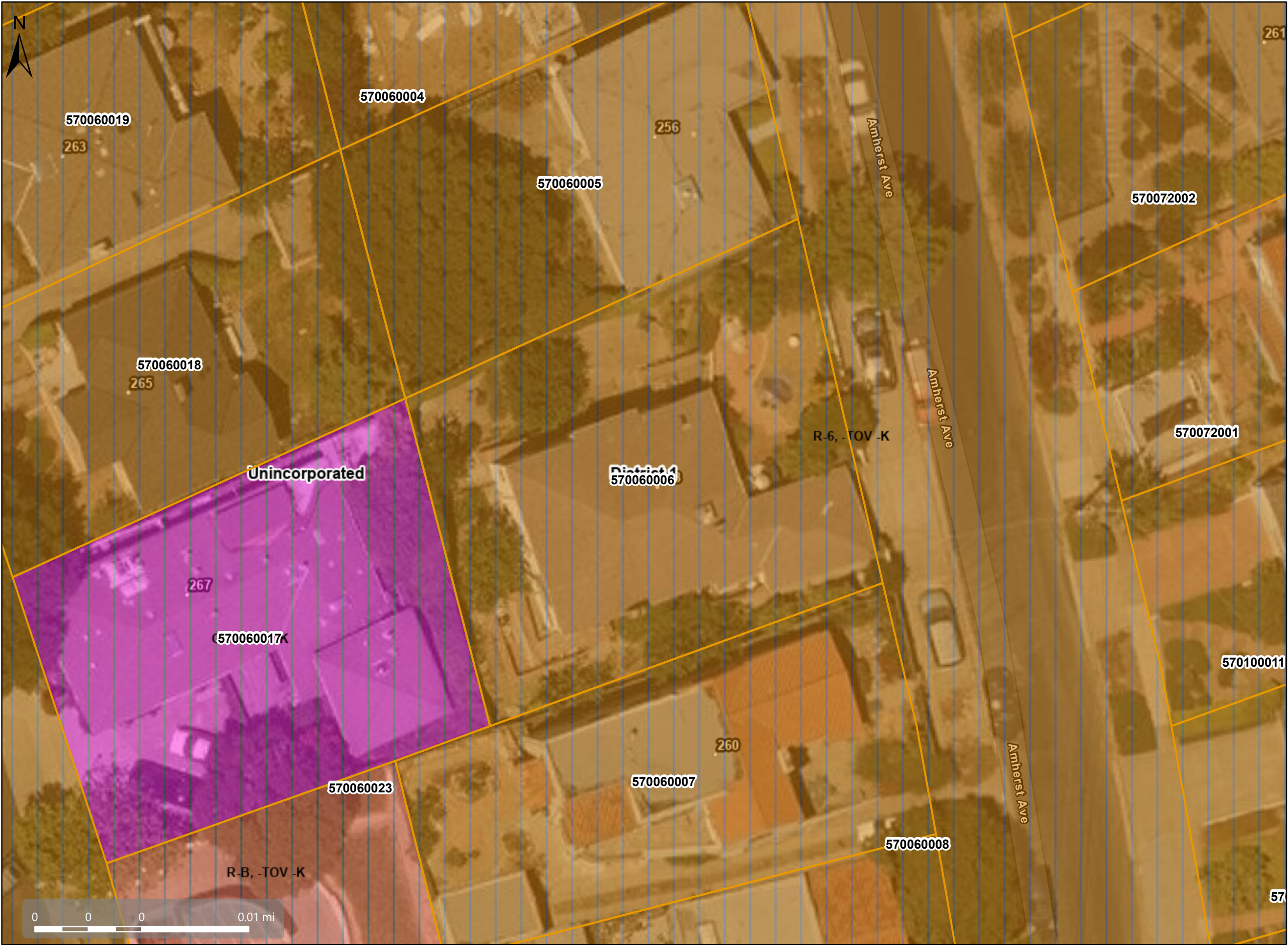


This map is a user generated, static output from an internet mapping application and is intended for reference use only.  
Data layers that appear on this map may or may not be accurate, current, or otherwise reliable.  
THIS MAP IS NOT TO BE USED FOR NAVIGATION.  
CCMap is maintained by Contra Costa County Department of Information Technology, County GIS.  
Data layers contained within the CCMap application are provided by various Contra Costa County Departments.  
Please direct all data inquiries to the appropriate department.  
Spatial Reference  
PCS: WGS 1984 Web Mercator Auxiliary Sphere  
Datum: WGS 1984





# Zoning



## Map Legend

- Assessment Parcels
- Zoning
- ZONE\_OVER
  - R-6 -TOV -K (Tree Obstruction and Kensington)
  - O-1 -TOV -K (Tree Obstruction and Kensington)
  - R-B -TOV -K (Tree Obstruction and Kensington)
  - Unincorporated
  - Board of Supervisors' Districts
  - Address Points

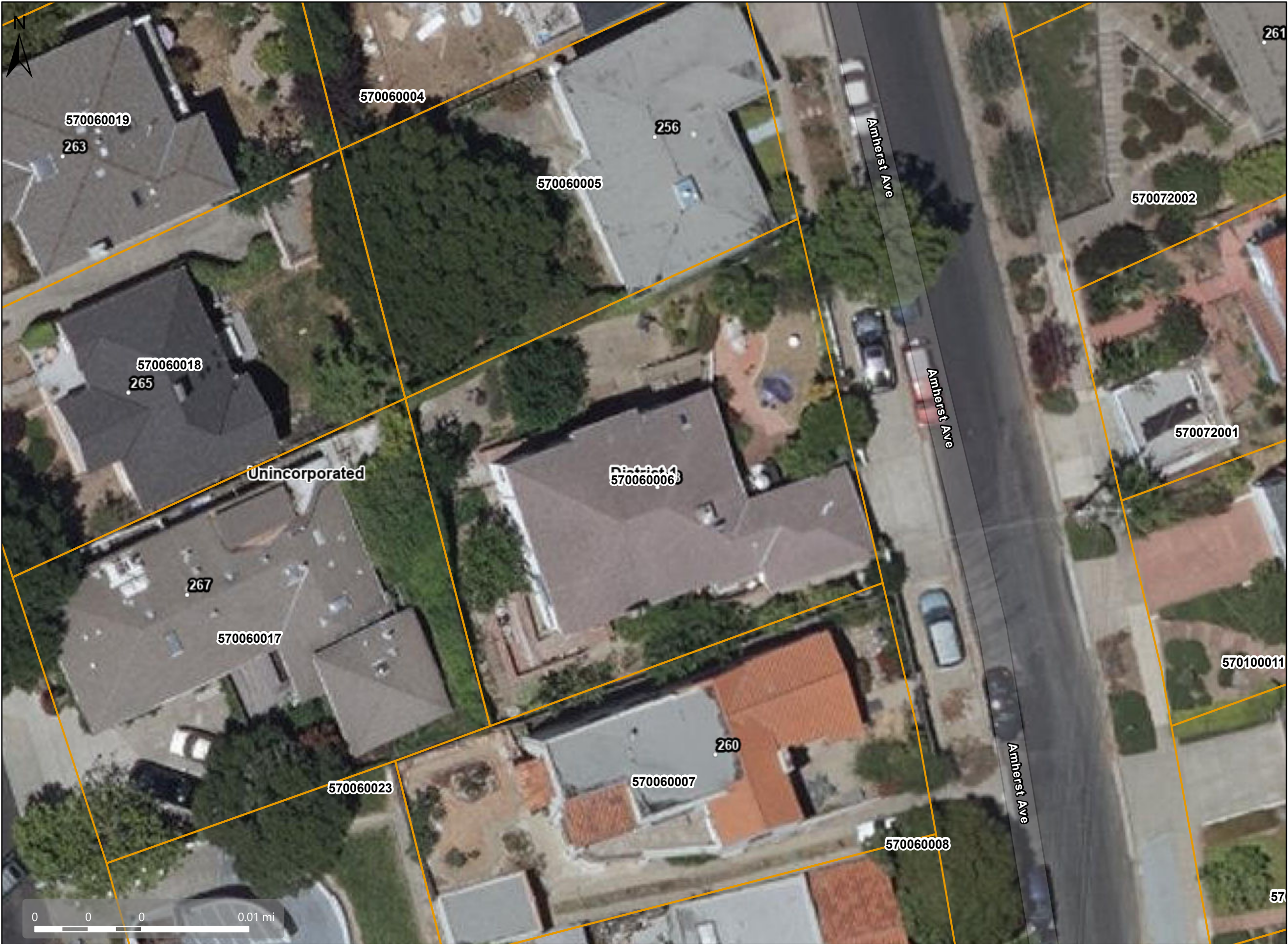


This map is a user generated, static output from an internet mapping application and is intended for reference use only.  
Data layers that appear on this map may or may not be accurate, current, or otherwise reliable.  
THIS MAP IS NOT TO BE USED FOR NAVIGATION.  
CCMap is maintained by Contra Costa County Department of Information Technology, County GIS.  
Data layers contained within the CCMap application are provided by various Contra Costa County Departments.  
Please direct all data inquiries to the appropriate department.  
Spatial Reference  
PCS: WGS 1984 Web Mercator Auxiliary Sphere  
Datum: WGS 1984





# Orthophotography



## Map Legend

- Assessment Parcels
- Unincorporated
- Board of Supervisors' Districts
- Address Points

**DOIT GIS**  
CONTRA COSTA COUNTY

This map is a user generated, static output from an internet mapping application and is intended for reference use only.  
Data layers that appear on this map may or may not be accurate, current, or otherwise reliable.  
THIS MAP IS NOT TO BE USED FOR NAVIGATION.  
CCMap is maintained by Contra Costa County Department of Information Technology, County GIS.  
Data layers contained within the CCMap application are provided by various Contra Costa County Departments.  
Please direct all data inquiries to the appropriate department.  
Spatial Reference  
PCS: WGS 1984 Web Mercator Auxiliary Sphere  
Datum: WGS 1984